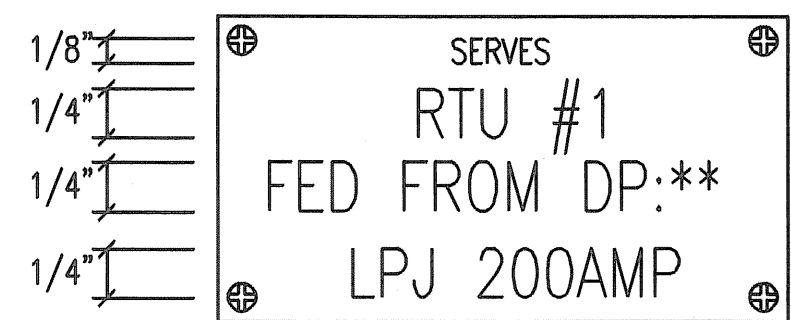
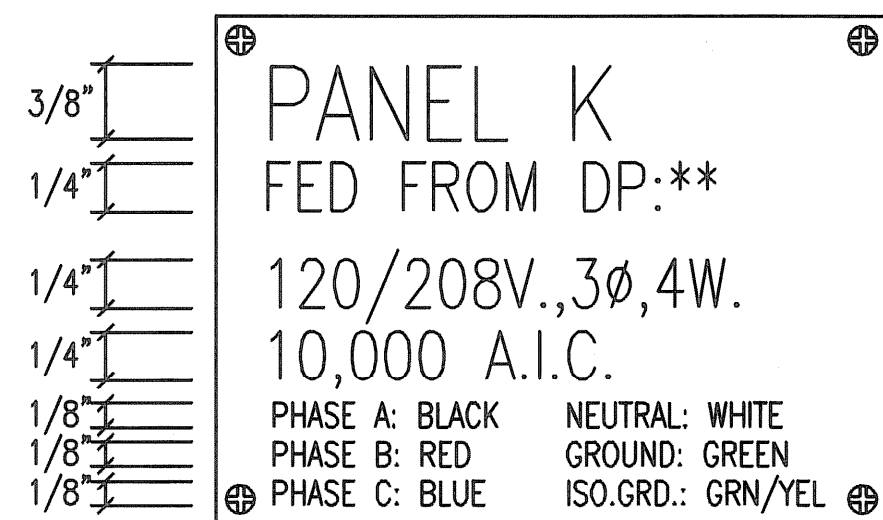




1 SWITCHBOARD/DISTRIBUTION PANEL/MOTOR CONTROL CENTER BREAKER/SWICH

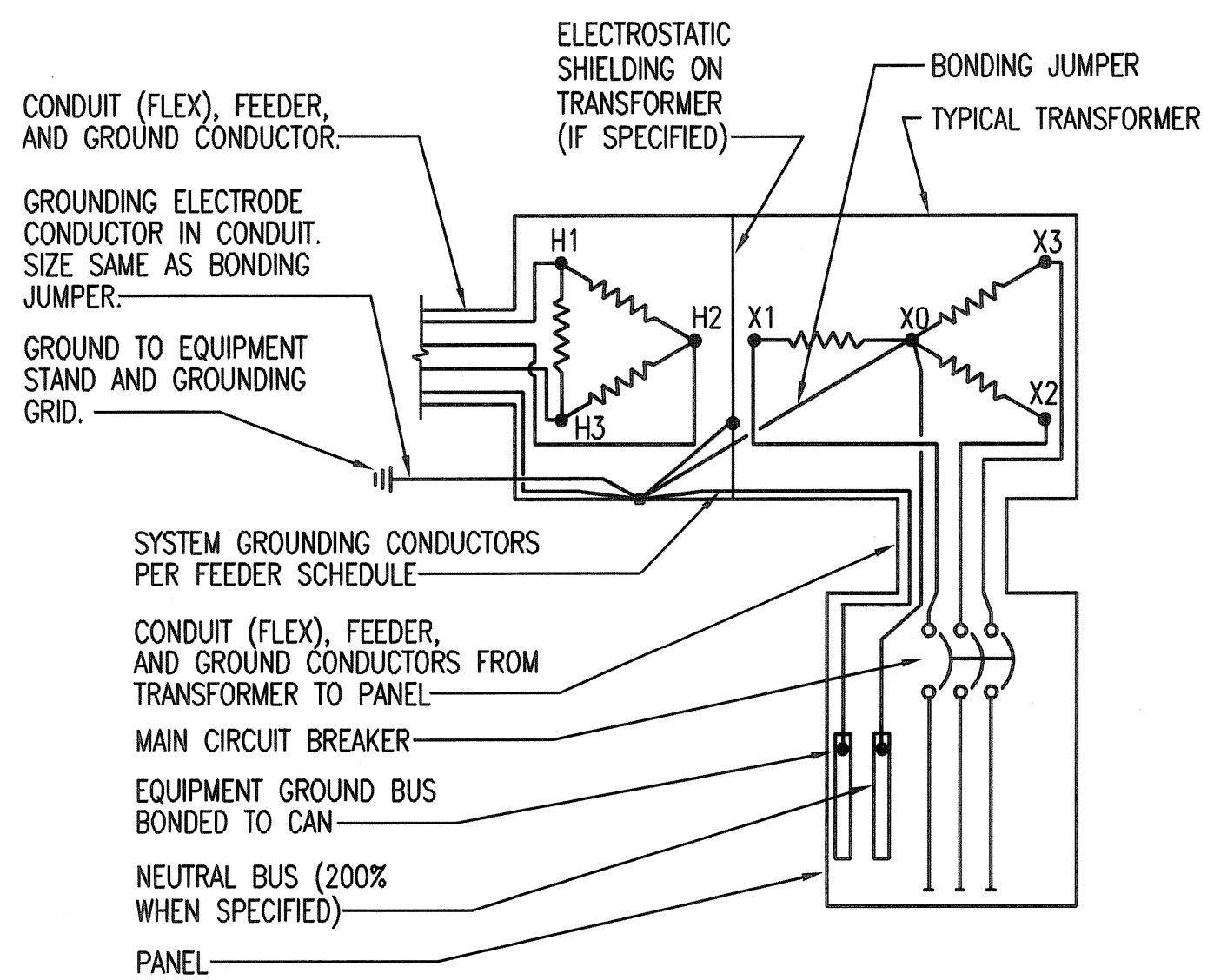


DISCONNECT SWITCH

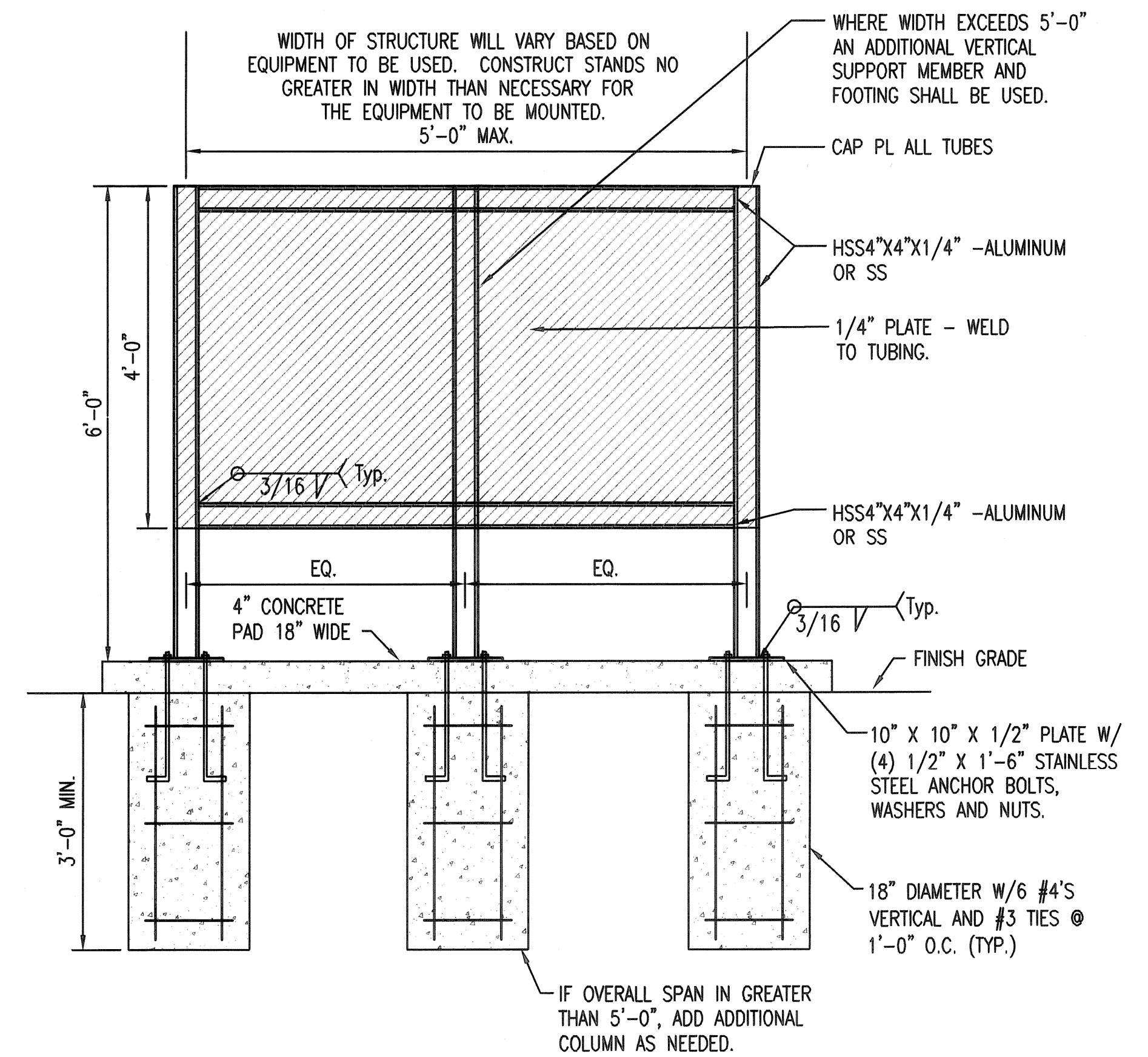


BRANCH CIRCUIT/DISTRIBUTION PANEL

1 TYPICAL NAME PLATES NO SCALE



2 TYPICAL TRANSFORMER GROUNDING DETAIL NO SCALE



CONTRACTOR OPTION TO FABRICATE ENTIRE STRUCTURE OF STAINLESS STEEL OR ALUMINUM. IF STAND IS CONSTRUCTED OF STAINLESS STEEL THE SAME TUBING, PLATE SIZES, AND WELDS SHALL BE USED.

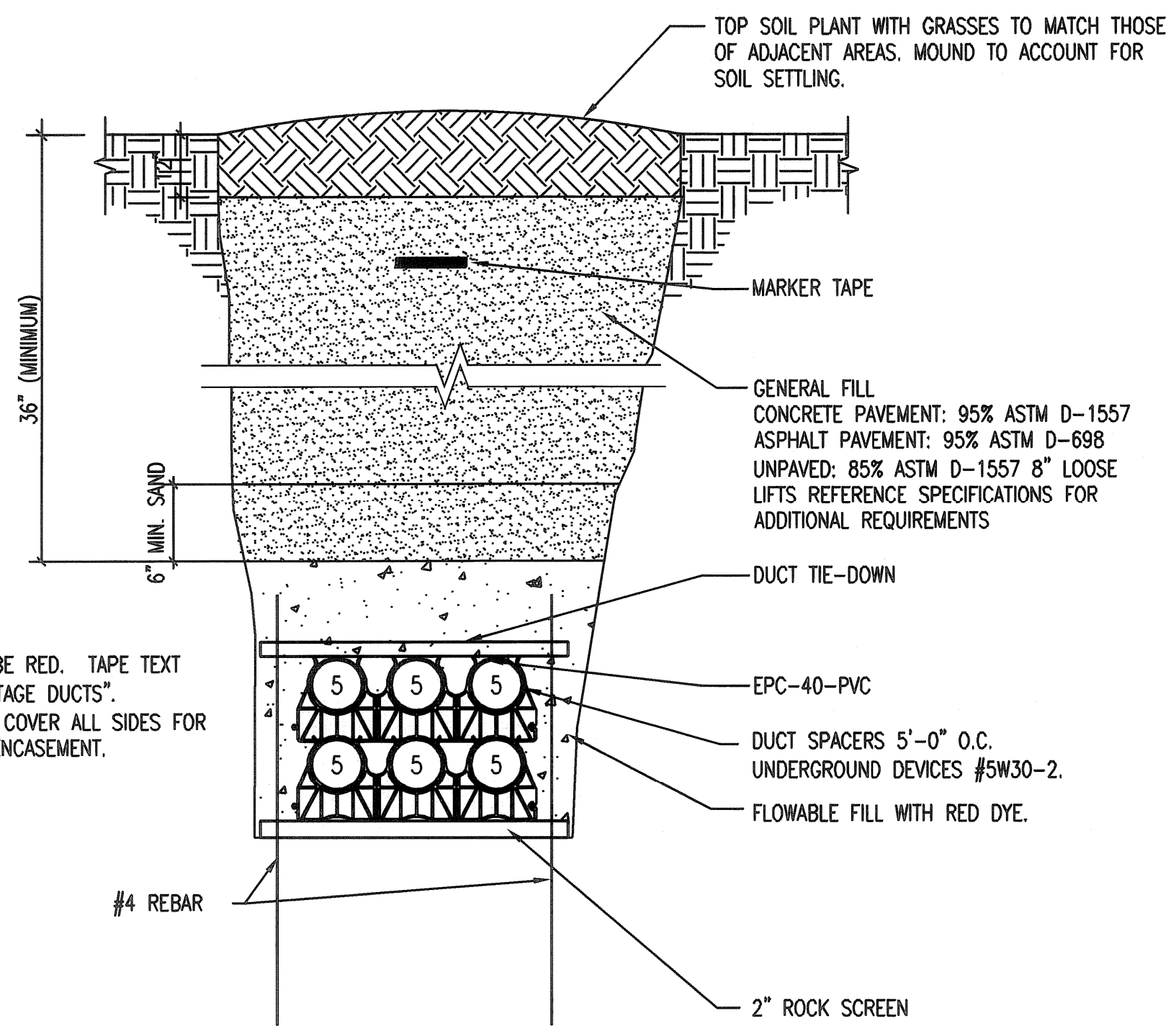
CONNECT ALL EQUIPMENT TO STRUCTURE USING STAINLESS STEEL BOLT AND/OR SCREWS.

IF ALUMINUM IS USED A 10" X 10" X 1/16" RUBBER PAD SHALL BE INSTALLED BETWEEN THE HOUSEKEEPING PAD AND THE PLATES AT THE BOTTOM OF EACH STAND VERTICAL MEMBER WHERE THEY ATTACH TO THE ANCHOR BOLTS

WHERE STANDS ARE TO BE INSTALLED ON THE INTERIOR OF THE PROCESS BUILDING, THE STANDS SHALL BE ANCHORED TO THE FLOOR WITH STAINLESS STEEL ANCHOR BOLTS EPOXIED IN PLACES IN LIEU OF PROVIDING FOUNDATIONS AS SHOWN.

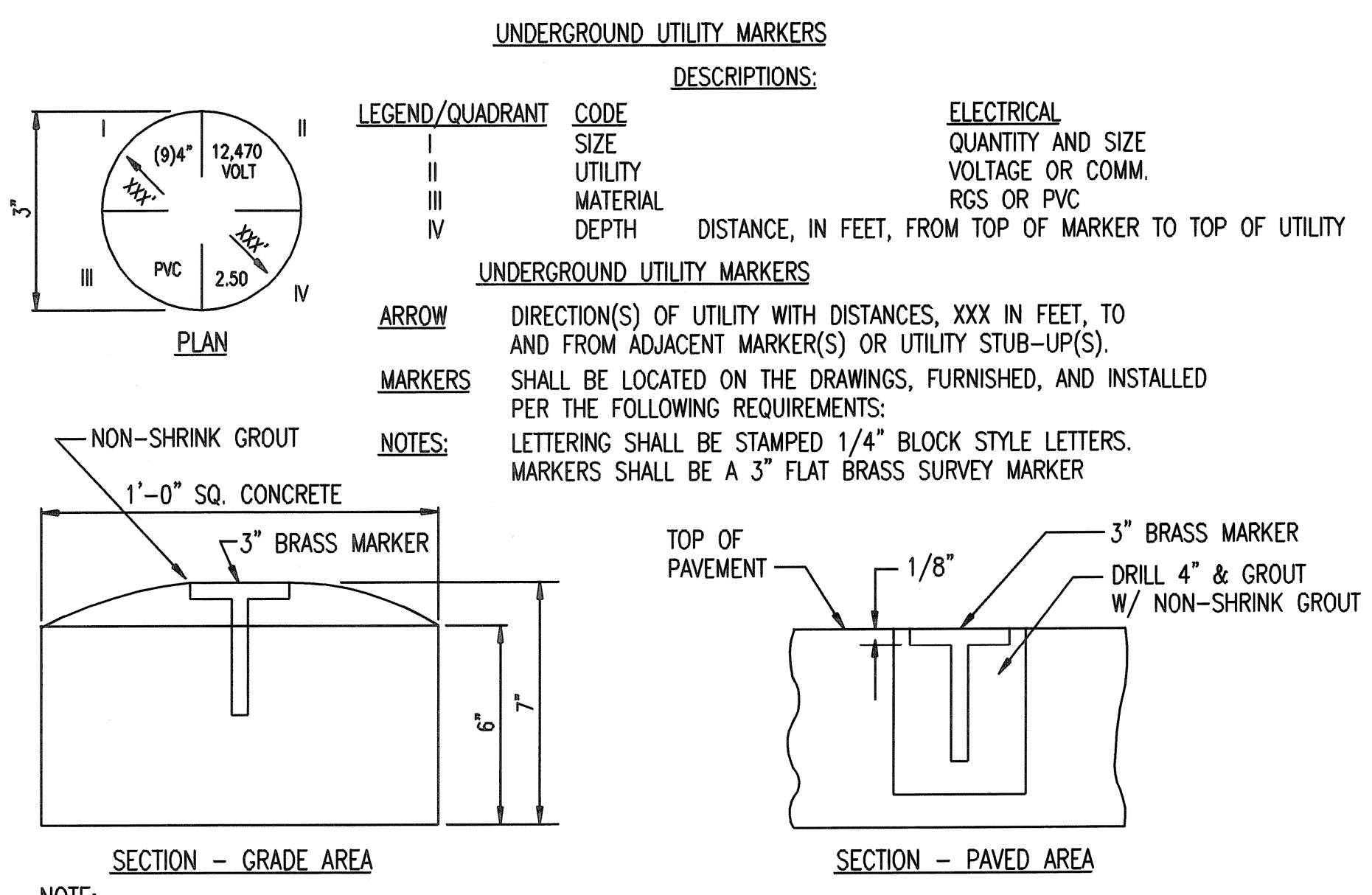
WHERE STANDS ARE TO BE INSTALLED ON THE INTERIOR OF THE PROCESS BUILDING, THE STRUCTURE MAY BE CONSTRUCTED OF BACK-TO-BACK UNISTRUT FOR VERTICAL MEMBERS AND UNISTRUT FOR HORIZONTAL MEMBERS WITH A 1/4" PLATE INSTALLED FOR MOUNTING EQUIPMENT ON. ALL MEMBERS SHALL BE EITHER ALUMINUM OR STAINLESS STEEL.

3 TYPICAL ELECTRICAL STRUCTURE DETAIL NO SCALE



NOTES:
1. TAPE COLOR SHALL BE RED. TAPE TEXT SHALL BE "HIGH VOLTAGE DUCTS".
2. PROVIDE 6" MINIMUM COVER ALL SIDES FOR ALL FLOWABLE FILL ENCASMENT.

4 DUCTBANK DETAIL - CONCRETE ENCASED NO SCALE



UNDERGROUND UTILITY MARKERS

LEGEND/QUADRANT CODE DESCRIPTIONS: ELECTRICAL QUANTITY AND SIZE VOLTAGE OR COMM. RGS OR PVC DISTANCE, IN FEET, FROM TOP OF MARKER TO TOP OF UTILITY

ARROW DIRECTION(S) OF UTILITY WITH DISTANCES, XXX IN FEET, TO AND FROM ADJACENT MARKER(S) OR UTILITY STUB-UP(S).

MARKERS SHALL BE LOCATED ON THE DRAWINGS, FURNISHED, AND INSTALLED PER THE FOLLOWING REQUIREMENTS:

NOTES: LETTERING SHALL BE STAMPED 1/4" BLOCK STYLE LETTERS. MARKERS SHALL BE A 3" FLAT BRASS SURVEY MARKER

NOTE: PROVIDE MARKERS AT 100'-0" ON CENTER, AND AT ALL CHANGE IN DIRECTION, FOR ALL UNDERGROUND DUCTS AND CABLES.

5 UTILITY MARKER DETAIL NO SCALE

Saved: 02-23-2015 4:03:20 PM by: CJV
Plot Scale: 1:1 02-24-2015 10:44:09 AM by: CHRIS VALL
U:\Wichita-Facility\2014\14229\001\Elec\Drawings\E.L.T. ELECTRICAL DETAILS

Revision		By	Date
CITY OF WICHITA, KANSAS			
ELECTRICAL DETAILS			
WWTP #2 EMERGENCY POWER PROJECT C.O.W. PROJECT NO. 468-84956			
PEC PROFESSIONAL ENGINEERING CONSULTANTS, P.A. 303 SOUTH TOPEKA WICHITA, KS 67202 316-262-2691 www.pec1.com			
Designed by	RWW	Job No. 34-14229-001-0042	Sht. E1.1 of 36
Drawn by	CJV	Date 2/23/15	