

**UTILITIES**

AT&T, Wichita Central Unit  
154 N. Broadway, Room 210  
Wichita, KS 67202  
Jason Edwards (316) 268-2008

Cox Communications  
901 George Washington Blvd.  
Wichita, KS 67211  
James Walburn (316) 260-7491

Kansas Gas Service  
1021 E. 26th St. N.  
Wichita, KS 67219  
Jim Coe (316) 832-3126

Level 3 Communications  
266 N. Main, Suite 100  
Wichita, KS 67202  
Mike Stephens (316) 858-6146

Westar Energy  
1900 E. Central, 3rd Floor  
Wichita, KS 67201  
Zach Laws (316) 261-6264

Wichita Storm Water Utility  
8th Floor - City Hall  
455 N. Main  
Wichita, KS 67202  
Jim Hardesty (316) 268-4545

Wichita Traffic Engineering  
7th Floor - City Hall  
455 N. Main  
Wichita, KS 67202  
Brian Coon (316) 268-4448

Wichita Water Utilities  
7th Floor - City Hall  
455 N. Main  
Wichita, KS 67202

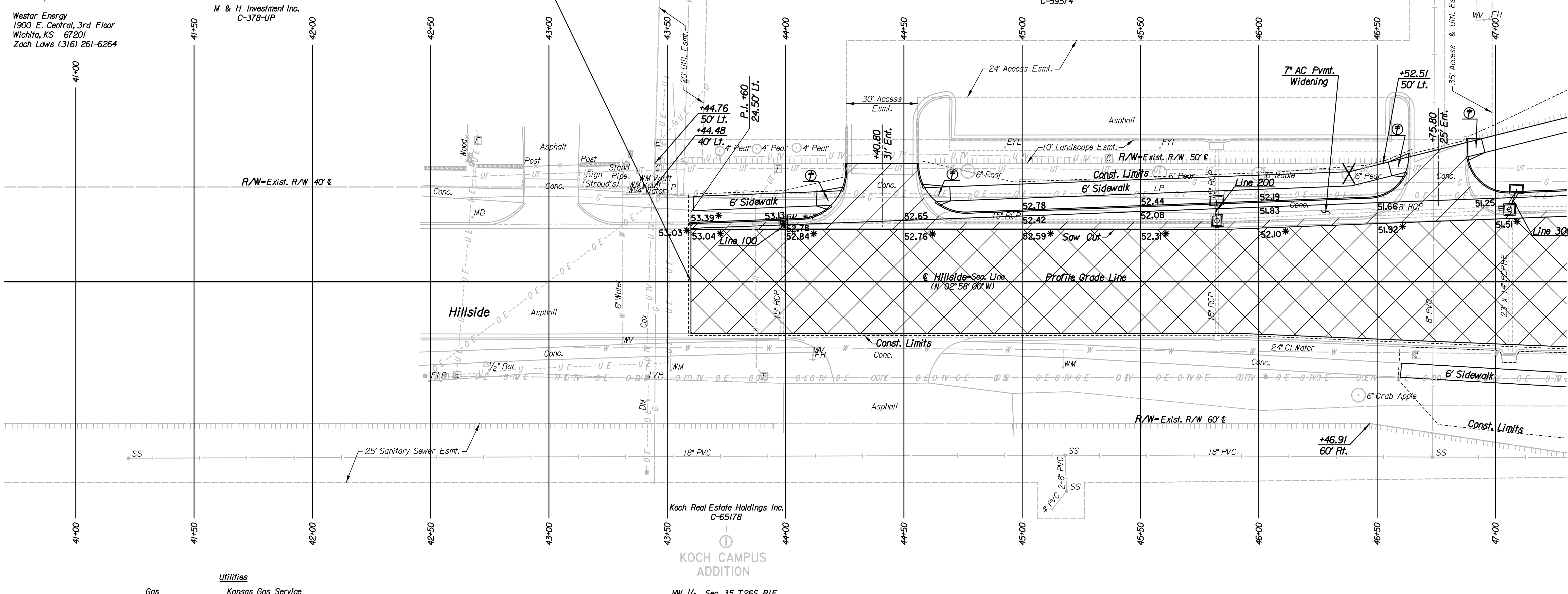
LaDonna Lawrenz (San. Sewer) (316) 268-4329 or  
Greg Lolley (Water) (316) 268-4334

M & H Investment Inc.  
C-378-UP

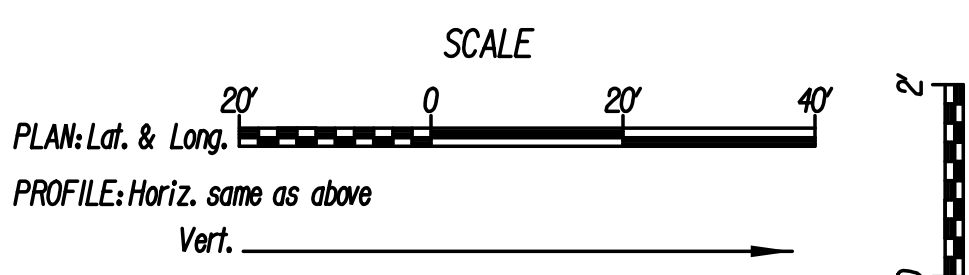
P.I. @ Sta. 23+18.44-  
W 1/4 Cor. Sec. 35, T26S, R1E  
I. See References below

Sta. 43+60 BEGIN  
PROJECT No. 472-85161

Date: 2/16/2015 9:23:25 AM  
 Plotted By: svb  
 FILE: U:\Wichita-Civil\2014\136\000\Trans\Road\DN Project\Plan\136-Hillside Plan 41.dgn



- W 1/4 Cor. Sec. 35, T26S, R1E
- Found 3/8" Rebar w/LS885 Cap in Thimble
  - N 1,707,175.2096 E 1,659,550.5525
  - PK Nail in SE face of power pole
  - PK Nail in NE face of power pole
  - Chiseled "\*" in concrete sidewalk, adjacent to fence corner post
  - Chiseled "\*" on curb inlet
  - PK Nail in SW face of power pole
  - ℄ of Hillside and 33rd St. to the West
- |        |    |
|--------|----|
| 53.48' | NE |
| 61.62' | NW |
| 64.10' | SW |
| 65.52' | SE |
| 54.50' | SE |



Note: Elevations shown along Curb and Gutter are to High Edge and Top of Curb.

REMOVAL OF EXISTING STRUCTURES *		
STATION	SIDE	ITEM
43+99	Lt.	Curb Inlet
45+82	Lt.	Curb Inlet
46+67	Rt.	Traffic Signal Service Box

\* For Information Only

BM\*\*12 Chiseled " on center front face of curb inlet, West curb of Hillside, North of Stroud's entrance.  
25' Lt. @ Sta. 43+99 Elev. = 1353.29

- LEGEND**
- Pavement Removal
  - Mill/Overlay
  - \* Match Existing
  - Denotes Tree Removal

Wheelchair Ramp without Detectable Warning

Revision		By	Date
HILLSIDE			
<b>PLAN</b>			
STA. 41+00 TO STA. 47+00			
GARY JANZEN, P.E.-CITY ENGINEER CITY OF WICHITA PROJECT NO. 472-85161			
PEC PROFESSIONAL ENGINEERING CONSULTANTS, P.A. 303 SOUTH TOPEKA WICHITA, KS 67202 316-262-2691 www.pec1.com			
Designed by	JPS	Job No.	14136
Drawn by	SVB	Date	Feb., 2015
			Sh. 4 of 62