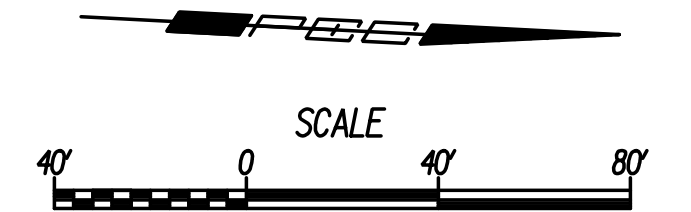
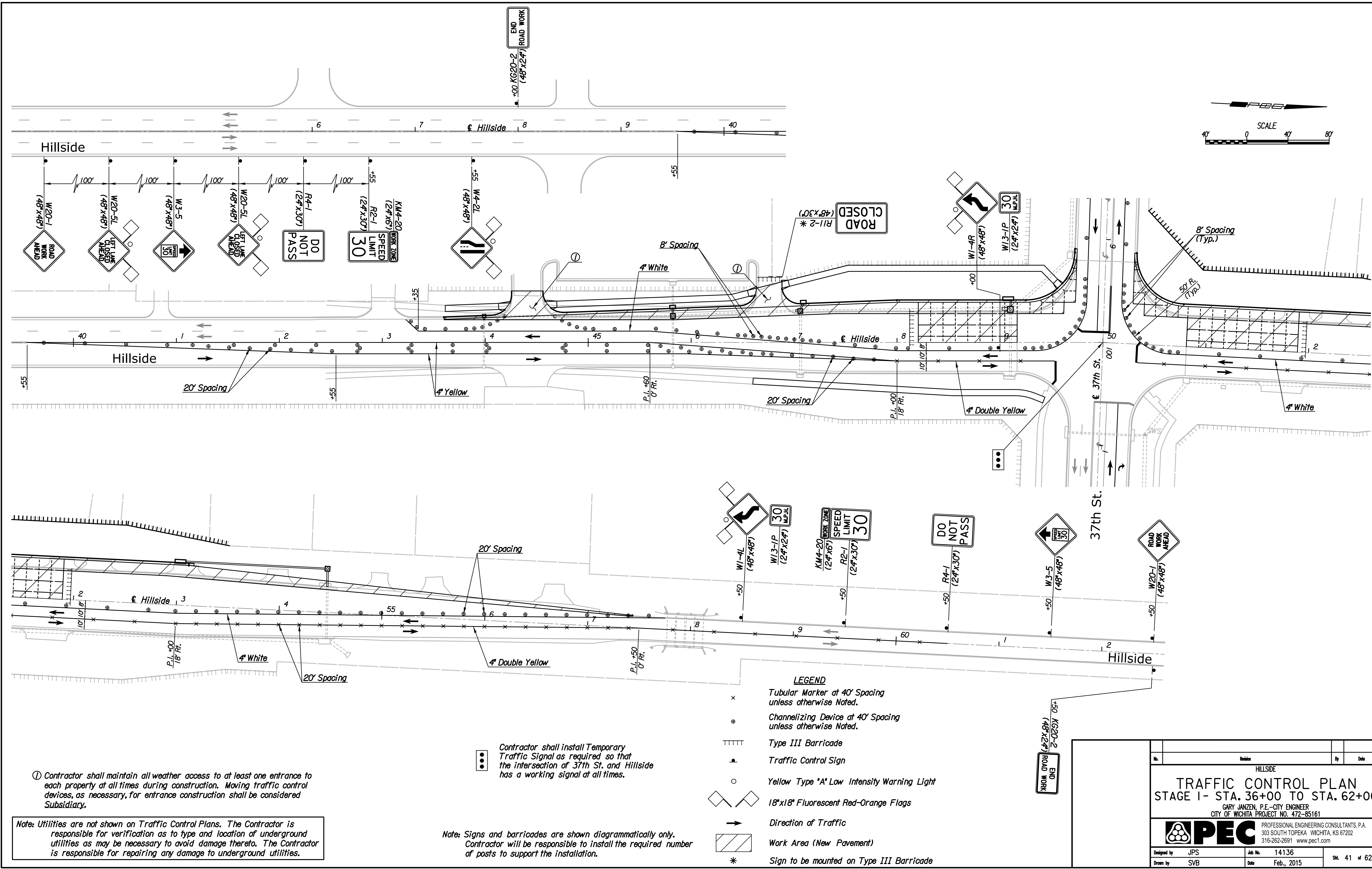


Plotted By: svb Date: 2/19/2015 11:24:21AM
 FILE: U:\Wichita\Civil\2014\14136\000\Trans\Road\DN Project\Traffic Control\14136-TC Stage\Hillside 36.dgn



Ⓢ Contractor shall maintain all weather access to at least one entrance to each property at all times during construction. Moving traffic control devices, as necessary, for entrance construction shall be considered Subsidiary.

Note: Utilities are not shown on Traffic Control Plans. The Contractor is responsible for verification as to type and location of underground utilities as may be necessary to avoid damage thereto. The Contractor is responsible for repairing any damage to underground utilities.

Ⓢ Contractor shall install Temporary Traffic Signal as required so that the intersection of 37th St. and Hillside has a working signal at all times.

Note: Signs and barricades are shown diagrammatically only. Contractor will be responsible to install the required number of posts to support the installation.

- LEGEND**
- x Tubular Marker at 40' Spacing unless otherwise Noted.
 - ⊙ Channelizing Device at 40' Spacing unless otherwise Noted.
 - TTTTT Type III Barricade
 - Traffic Control Sign
 - Yellow Type "A" Low Intensity Warning Light
 - ◇ 18"x18" Fluorescent Red-Orange Flags
 - Direction of Traffic
 - ▨ Work Area (New Pavement)
 - * Sign to be mounted on Type III Barricade

Revision		By	Date
HILLSIDE			
TRAFFIC CONTROL PLAN			
STAGE I- STA. 36+00 TO STA. 62+00			
GARY JANZEN, P.E.-CITY ENGINEER CITY OF WICHITA PROJECT NO. 472-85161			
PEC PROFESSIONAL ENGINEERING CONSULTANTS, P.A. 303 SOUTH TOPEKA WICHITA, KS 67202 316-262-2691 www.pec1.com			
Designed by	JPS	Job No.	14136
Drawn by	SVB	Date	Feb., 2015
			Sht. 41 of 62