

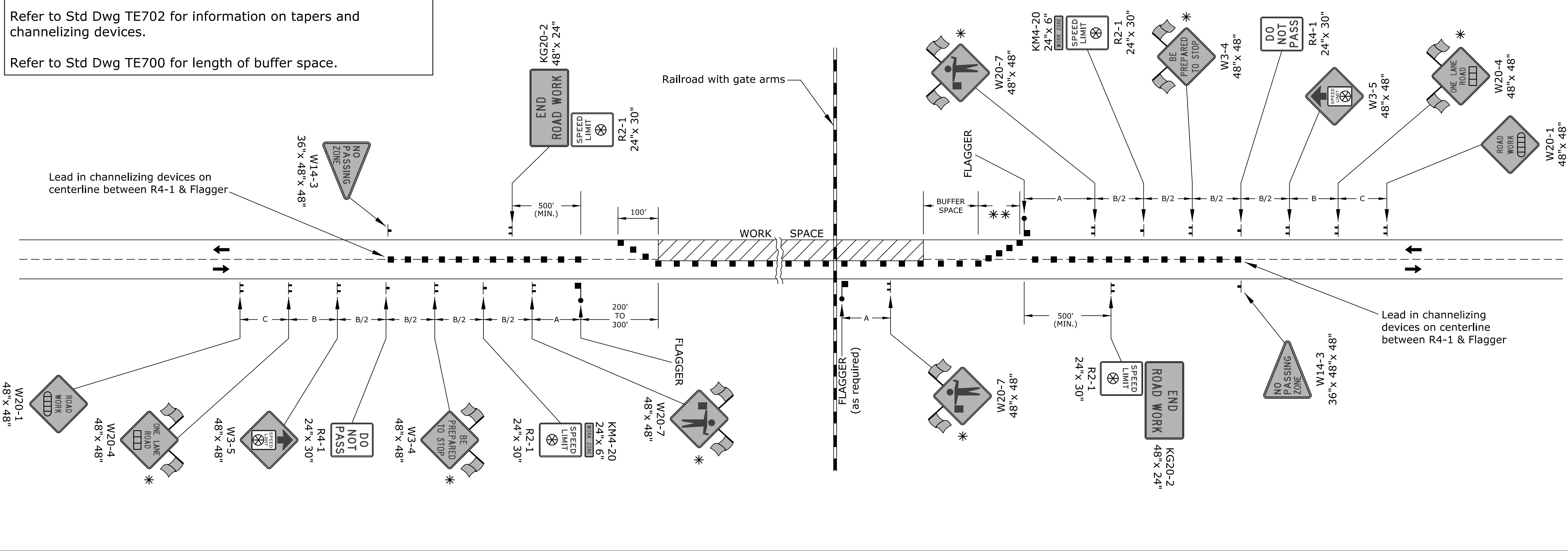
STATE	PROJECT NO.	YEAR	SHEET NO.	TOTAL SHEETS
KANSAS	472-85161	2015	51	62

Refer to Std Dwg TE710 for additional information on temporary traffic control signs, sign spacing and conflicting signs.

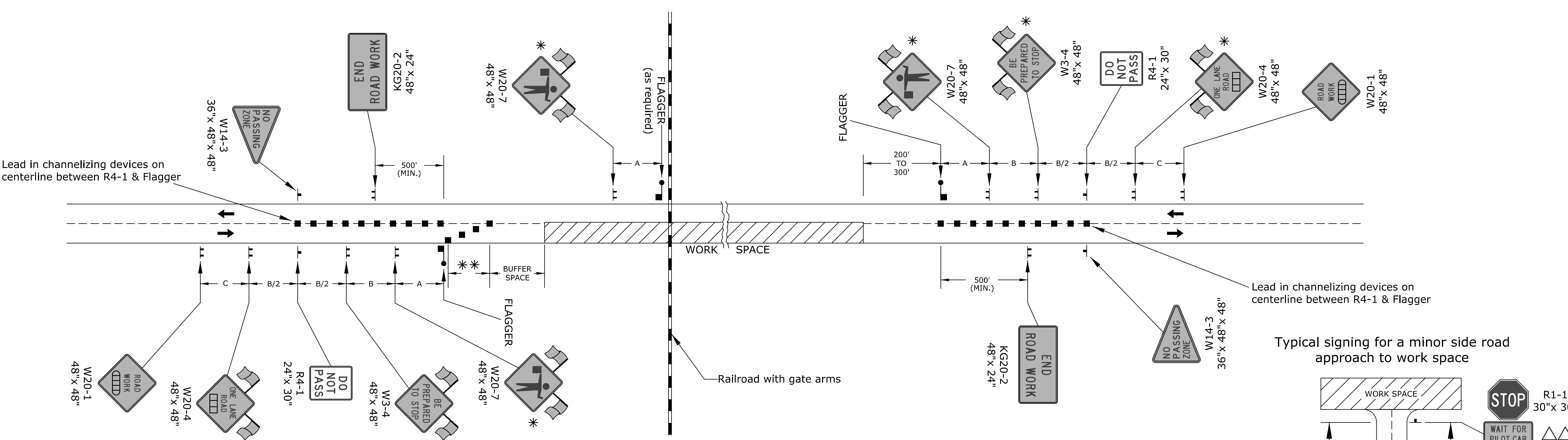
Refer to Std Dwg TE702 for information on tapers and channelizing devices.

Refer to Std Dwg TE700 for length of buffer space.

FLAGGER



FLAGGER AND PILOT CAR



Notes:

Trucks hauling material to the project shall STOP at Flagger. After stopping, upon approval of the Engineer, trucks may be allowed to move around Flagger.

Place a Flagger at all highway and major collector intersections or railroads with gate arms in the work space. Place a Flagger at all railroads with at-grade intersections and gates in the work space to control traffic crossing the tracks to the left of the gate arm. A single Flagger at each intersection is subsidiary to other items. The need for a Flagger at minor side road intersections shall be determined by the Engineer. If requested by the Engineer, each additional Flagger will be measured and paid for each hour they are required. Place a W20-7 (Flagger symbol) sign on each side road that is controlled by a Flagger.

Existing signs shall not be covered or removed between Flagger stations.

* When applicable, use Type "A" low intensity warning lights for nighttime operations only or as directed by the Engineer.

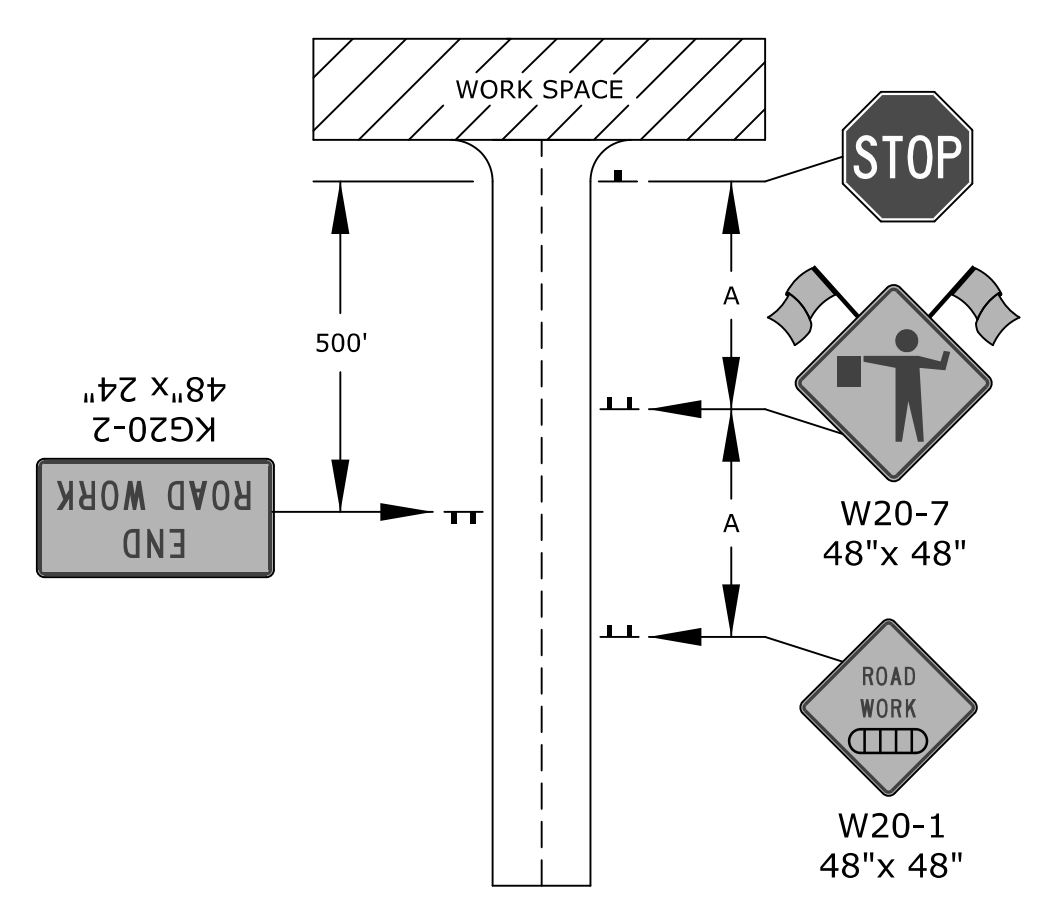
** Minimum six (6) channelizers spaced at 20' intervals.

△ Not required on substantial maintenance projects (1R).

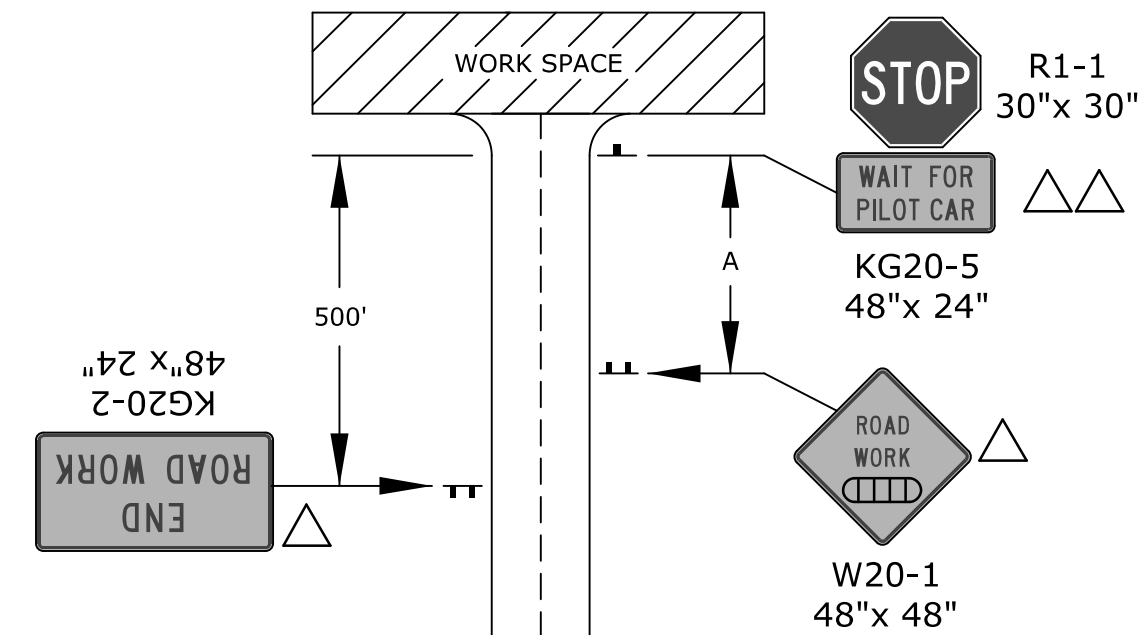
△△ The KG20-5 (WAIT FOR PILOT CAR) sign shall be mounted on an approved portable support and not attached to the existing stop sign post.

The KG20-5 sign shall be placed immediately in front of the existing stop sign, a minimum of 6" below the bottom of the stop sign. The sign should be removed or covered when there is no pilot car.

Typical signing for highway or major collector approach to work space



Typical signing for a minor side road approach to work space



- Channelizing Device
- AHEAD, 1500 FT, OR 1 MILE
- AHEAD, 1000 FT, 1500 FT, OR 1/2 MILE
- ⊗ Speed to be determined by the Engineer
- Type "A" low intensity warning light

NO.	DATE	REVISIONS	BY	APP'D
3	9/4/13	Added Flagger For Railroads	J.A.M.	K.E.
2	10/16/12	Modified Lead in Channelizer Note	J.A.M.	K.E.
1	10/4/11	Removed Conflicting Signs Note	J.A.M.	K.E.

KANSAS DEPARTMENT OF TRANSPORTATION
 TYPICAL TRAFFIC CONTROL FLAGGER OR PILOT CAR
 TWO-LANE ONE LANE CLOSED
 EXCLUDING CONCRETE SHOULDERS
 EQUAL TO OR GREATER THAN 8 FT

TE730		9/4/13		APP'D		Kristina Ericksen	
DESIGNED	B.A.H.	DETAILED	B.A.H.	QUANTITIES	TRACED	J.A.M.	
DESIGN CK.	DETAIL CK.	QUAN. CK.	TRACE CK.				

Drawn By : svb
 File : U:\Wichita-Civil\2014\14136\000\TransRoad\DGN ProjectStandards\14136-te730.dgn
 Plotted : 2/18/2015