

**GENERAL NOTES**

1. WATERLINES SHALL BE INSTALLED IN ACCORDANCE WITH CITY OF WICHITA STANDARD SPECIFICATIONS, FOR THE "INSTALLATION OF WATER DISTRIBUTION SYSTEMS", NO. 14533.
2. ALL ELEVATIONS SHOWN ARE BASED ON NAVD 88.
3. CONTRACTOR WILL BE REQUIRED TO PROVIDE A MINIMUM ADVANCE NOTICE OF FORTY-EIGHT(48)HOURS TO UTILITY COMPANIES PRIOR TO STARTING ANY EXCAVATION AS FOLLOWS:

KANSAS ONE CALL 687-2470

THE CONTRACTOR MUST NOTIFY THE FOLLOWING IN CASE OF AN EMERGENCY:

COX COMMUNICATIONS	262-4270 OR 263-2061
AT&T	1-800-870-8390
KANSAS GAS SERVICE	1-888-482-4950
WESTAR	1-800-383-1183
BLACK HILLS ENERGY	1-800-303-0752
CITY OF WICHITA (WATER & SEWER)	268-4555

4. ANY EXCESS EXCAVATION WHICH IS TO BE WASTED, SHALL BE DISPOSED OF ON SITES PROVIDED BY THE CONTRACTOR. THESE SITES SHALL BE APPROVED BY THE ENGINEER AS TO SUITABILITY, APPEARANCE, AND SITE LOCATION, AND SHALL BE DISPOSED OF IN ACCORDANCE WITH THE PROVISIONS OF THE KANSAS SOLID WASTE MANAGEMENT STATUTES AND REGULATIONS (KSA 65-3401, KAR 28-29-1 ET SEQ.)

5. THE CONTRACTOR WILL BE REQUIRED TO WORK AROUND EXISTING UTILITIES WITHIN THE RIGHT-OF-WAY. THE CONTRACTOR WILL DELIVER REMOVED FIRE HYDRANTS TO WATER DISTRIBUTION, 1703 SIM PARK DRIVE.

6. CONTRACTOR TO MAINTAIN TRAFFIC USING BARRICADES AND FLAGPERSONS WHILE WORKING WITHIN STREET RIGHT OF WAY.

7. ALL AREAS DISTURBED BY CONSTRUCTION INCLUDING STAGING AREAS, SHALL BE REPLANTED WITH GRASS SEED AT THE APPROPRIATE RATES APPROVED BY THE ENGINEER

8. EXISTING UTILITIES AND THEIR LOCATION, AS SHOWN ON THE PLANS, REPRESENT THE BEST AVAILABLE INFORMATION. IT SHOULD BE NOTED THAT OTHER BURIED LINES AND CABLE MAY EXIST WHICH ARE NOT SHOWN ON THESE PLANS. THE CONTRACTOR SHALL EXERCISE EXTREME CAUTION DURING TRENCHING OPERATIONS TO AVOID DAMAGING THESE LINES AND CABLES. ANY UTILITIES DAMAGED SHALL BE REPLACED OR REPAIRED IMMEDIATELY AS DIRECTED BY THE ENGINEER AT THE CONTRACTOR'S EXPENSE. THE CONTRACTOR SHALL PROTECT FROM DAMAGE AND SUPPORT EXISTING UTILITIES THROUGH CONSTRUCTION AS APPROVED BY THE UTILITY OWNER AND THE ENGINEER AT THE CONTRACTOR'S EXPENSE.

9. THE CONTRACTOR SHALL BE RESPONSIBLE FOR PRESERVING EXISTING PROPERTY IRONS AND RIGHT-OF-WAY MONUMENTS. THE CONTRACTOR SHALL BE REQUIRED TO RE-ESTABLISH ANY PROPERTY IRONS OR RIGHT-OF-WAY MONUMENTS WHICH ARE DAMAGED OR DESTROYED BY HIS CONSTRUCTION OPERATIONS. SUCH IRONS OR MONUMENTS SHALL BE RE-ESTABLISHED BY A LICENSED LAND SURVEYOR IN ACCORDANCE WITH STATE LAWS.

10. THE CONTRACTOR SHALL VERIFY HORIZONTAL AND VERTICAL LOCATION, TYPE, SIZE, AND CLASS OF EXISTING WATERLINES PRIOR TO CONSTRUCTION. EXISTING WATERLINE LOCATIONS AS SHOWN ON THE PLANS ARE APPROXIMATE. THE CONTRACTOR SHALL MAKE ADJUSTMENTS AS REQUIRED AND APPROVED BY THE ENGINEER. PROVISIONS FOR AND INSTALLATION OF PIPE ADAPTORS, SHORT SECTIONS OF PIPE, AND COUPLERS SHALL BE SUBSIDIARY TO OTHER PAY ITEMS OF WORK.

11. THE CONTRACTOR SHALL NOT START WORK ON THE PROJECT UNTIL THE PROJECT INSPECTOR IS ASSIGNED TO THE PROJECT AND IS PRESENT ON THE SITE. ANY WORK PERFORMED WITHOUT INSPECTION IS SUBJECT TO BE UNCOVERED FOR INSPECTION.

12. OPENING AND CLOSING WATER VALVES SHALL BE DONE SLOWLY TO PREVENT DAMAGE TO THE WATER DISTRIBUTION SYSTEM FROM WATER HAMMER. ALL VALVES CLOSED BY THE CONTRACTOR MUST BE REOPENED AS NEW CONSTRUCTION PERMITS. PROJECT INSPECTOR MUST ASCERTAIN THAT ANY VALVE CLOSED BY THE CONTRACTOR IS REOPENED. CONTRACTOR WILL BE PERMITTED TO OPERATE WATER VALVES ONLY WHEN THE PROJECT INSPECTOR ASSIGNED TO THE PROJECT IS PRESENT.

13. THE CONTRACTOR SHALL GIVE ALL PROPERTY OWNERS AND/OR TENANTS OF DEVELOPED PROPERTY DIRECTLY ABUTTING THE CONSTRUCTION OF THIS PROJECT A MINIMUM OF TEN (10) DAYS ADVANCE NOTICE PRIOR TO START OF CONSTRUCTION.

14. EACH BIDDER SHALL VISIT THE SITE OF THE PROJECT BEFORE SUBMITTING THE PROPOSAL FOR THIS WORK SO THAT HE WILL BE FULLY INFORMED OF THE EXISTING FIELD CONDITIONS AND THE OBSTACLES WHICH MIGHT BE ENCOUNTERED. UPON AWARD OF THE CONTRACT THE CONTRACTOR WILL NOT BE GRANTED ANY ADDITIONAL COMPENSATION WITH REGARDS TO TIME AND MONEY FOR CONDITIONS THAT MAY HAVE BEEN EVALUATED DURING ANY INSPECTION OF THE SITE.

15. ALL WATERLINES SHALL HAVE A MINIMUM DEPTH OF BURY OF 48 INCHES. THE WATER MAIN SHALL BE CONSTRUCTED ON THE ALIGNMENT SHOWN BY THE PLANS. THE COST FOR ANY NECESSARY TREE TRIMMING, CLEARING AND/OR GRUBBING SHALL BE INCLUDED IN THE PRICE BID FOR THE INSTALLED WATER MAIN PIPE. TREES AND SHRUBS IN PUBLIC RIGHT OF WAY WHICH ARE IN DIRECT CONFLICT WITH PROPOSED CONSTRUCTION SHALL BE REMOVED BY THE CONTRACTOR AND SHALL BE INCLUDED IN THE PRICE BID FOR THE INSTALLED WATER PIPE. TREES AND SHRUBS NOT IN DIRECT CONFLICT WITH PROPOSED CONSTRUCTION SHALL BE SAVED AND PROTECTED FROM DAMAGE.

16. INSPECTOR WILL NOTE ON AS BUILT PLAN LOCATIONS OF ALL FITTINGS AND VALVES. LOCATIONS WILL BE MEASURED FROM PROPERTY LINES, CURB LINES, AND/OR CENTER LINES. HYDRANT BRANCH LENGTH AND HYDRANT BURY LINE ELEVATION ARE TO MATCH FIELD CONDITIONS AND BE APPROVED BY THE ENGINEER.

Jet Stream DR-18  
C-900  
Sigma 90 deg  
bends megalugs  
and thrust blocks  
U.S. Pipe DICL

From South East  
corner of building  
68' South and 71 1/2'  
East to tapping  
sleeve and valve is  
18" North

# PRIVATE FIRE PROTECTION LINE PLANS

TO SERVE

LOTS 1-3, BLOCK 1, FAWNWOOD ADD.,  
WICHITA, SEDGWICK COUNTY, KANSAS

CITY OF WICHITA PRIVATE PROJECT NO.:

1817 PPW (O.C.A. NO. 6078653),  
GARY JANZEN, P.E., CITY ENGINEER  
MAY, 2014

## AS BUILTS

Contractor:  
Ewertz  
Excavation

Project Inspector:  
Larry Gann

4/20/2015

**KEMILLER**  
ENGINEERING PA  
117 E. Lewis, Wichita, KS 67202 (316)264-0242

## SHEET INDEX

NO.	TITLE
1	COVER
2	SITE PLAN
3	PLAN & PROFILE
4	WATER ASSEMBLY DETAIL
5	MISC. WATER DETAILS

APPROVED AS NOTED  
BY CITY ENGINEER OF WICHITA,  
WATER & SEWER DEPT. AND  
BY WICHITA FIRE DEPARTMENT

PUBLIC WORKS *Rebecca Dail 5/28/14*

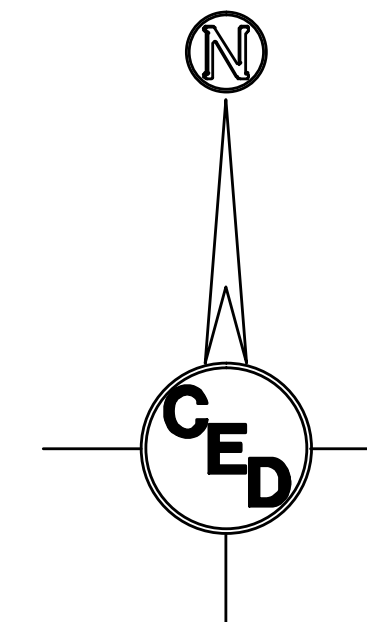
WATER & SEWER *Doug Hall 5/28-14*

FIRE DEPARTMENT *[Signature] 5-28-14*

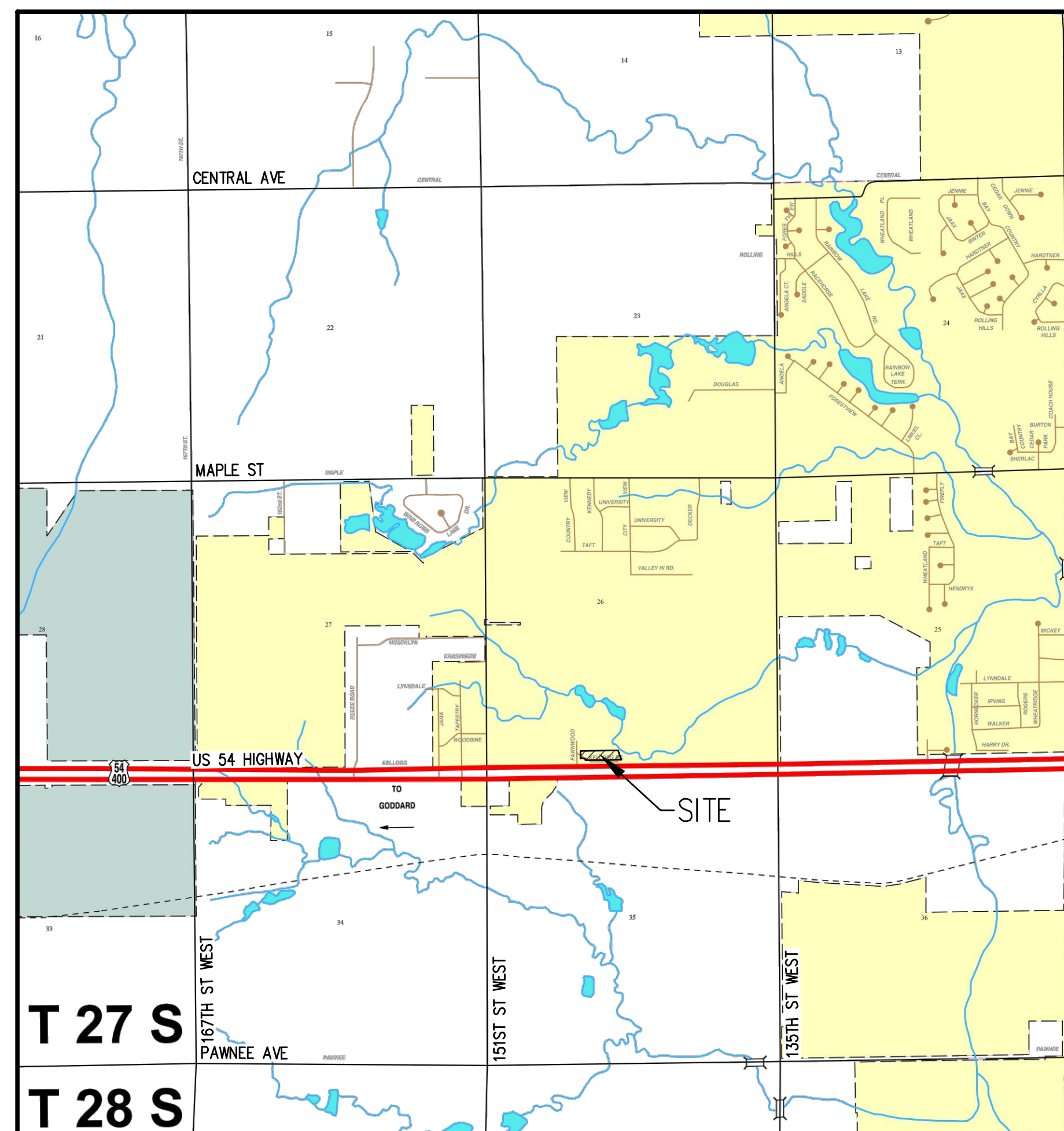
### NOTE TO CONTRACTORS

PUBLIC PROPERTY:  
INSTALLATION, INSPECTION AND TESTING FOR THE WATERLINE IS TO BE PROVIDED BY A LICENSED CONSULTING ENGINEERING FIRM UNDER CONTRACT WITH THE OWNER/DEVELOPER. SAID INSPECTION TO BE IN ACCORDANCE WITH THE CITY OF WICHITA STANDARD CONSTRUCTION ENGINEERING PRACTICES AND CERTIFIED BY A LICENSED PROFESSIONAL ENGINEER. NO WORK SHALL BE PERFORMED IN DEDICATED EASEMENTS OR THE PUBLIC RIGHT-OF-WAY BY THE CONTRACTOR WITHOUT SUCH INSPECTION NOR SHALL ANY WORK BE COMMENCED WITHOUT THE WRITTEN AUTHORIZATION BY THE CITY ENGINEER. ALL CONSTRUCTION AND MATERIALS SHALL COMPLY WITH THE CITY OF WICHITA SPECIFICATIONS AND STANDARDS (ON FILE AND AVAILABLE IN THE CITY ENGINEER'S OFFICE).

PRIVATE PROPERTY:  
INSTALLATION, INSPECTION, AND TESTING FOR THE FIRE PROTECTION LINE IS TO BE PERFORMED BY A CITY OF WICHITA CERTIFIED FIRE PROTECTION CONTRACTOR IN ACCORDANCE WITH THE FIRE CODES AS ADOPTED BY THE CITY OF WICHITA. ALL MATERIALS AND CONSTRUCTION PRACTICES FOR THE FIRE PROTECTION LINE SHALL COMPLY WITH THE FIRE CODES AS ADOPTED BY THE CITY OF WICHITA (AVAILABLE FROM THE CITY OF WICHITA FIRE DEPARTMENT). THE CONTRACTOR SHALL NOT COMMENCE WORK WITHOUT NOTIFICATION TO AND APPROVAL OF THE WICHITA FIRE DEPARTMENT.



(Not To Scale)



PROJECT LOCATED IN THE  
SW 1/4, SEC 26, T27S, R2W,  
SEDGWICK COUNTY, KANSAS

**BENCHMARKS:**  
SBM 1: "C" CUT IN CONCRETE ON NORTH SIDE OF US HIGHWAY 54 AT EAST END OF ENTRANCE INTO WICHITA FRIENDS SCHOOL. ELEV.=1390.47(NAVD88)  
SBM 2: "C" CUT IN CONCRETE ON WEST SIDE OF WEST ENTRANCE INTO HEARTLAND FRIENDS MEETING HOUSE. ELEV.=1389.85(NAVD88)

### SURVEY DISCLAIMER:

TOPOGRAPHIC SURVEY AND CONTOUR MAP USED IN PREPARING PLANS WAS PROVIDED BY SAVOY. ENGINEER DOES NOT GUARANTEE SURVEY ELEVATIONS FOR ACCURACY. CONTRACTOR SHALL VERIFY ELEVATIONS AND NOTIFY ENGINEER OF ANY DISCREPANCIES.

UTILITIES SHOWN REPRESENT THE BEST INFORMATION AVAILABLE FOR DESIGN. ADDITIONAL UTILITIES MAY BE PRESENT ON THIS PROJECT. THE CONTRACTOR SHALL BE RESPONSIBLE FOR DETERMINING THE EXACT LOCATION, DEPTH AND SIZE OF ALL UNDERGROUND UTILITIES PRIOR TO CONSTRUCTION. THE CONTRACTOR SHALL BE LIABLE FOR ANY DAMAGE CAUSED BY THE FAILURE TO DO SO.



REV.	DESCRIPTION	DATE

PROPOSED FIRE PROTECTION LINE  
TO SERVE  
WICHITA FRIENDS SCHOOL  
14700 WEST KELLOGG  
SECTION 26, T27S, R2W  
WICHITA, SEDGWICK COUNTY, KS

CERTIFIED ENGINEERING DESIGN, P.A.  
CIVIL ENGINEERING SERVICES

**CED**

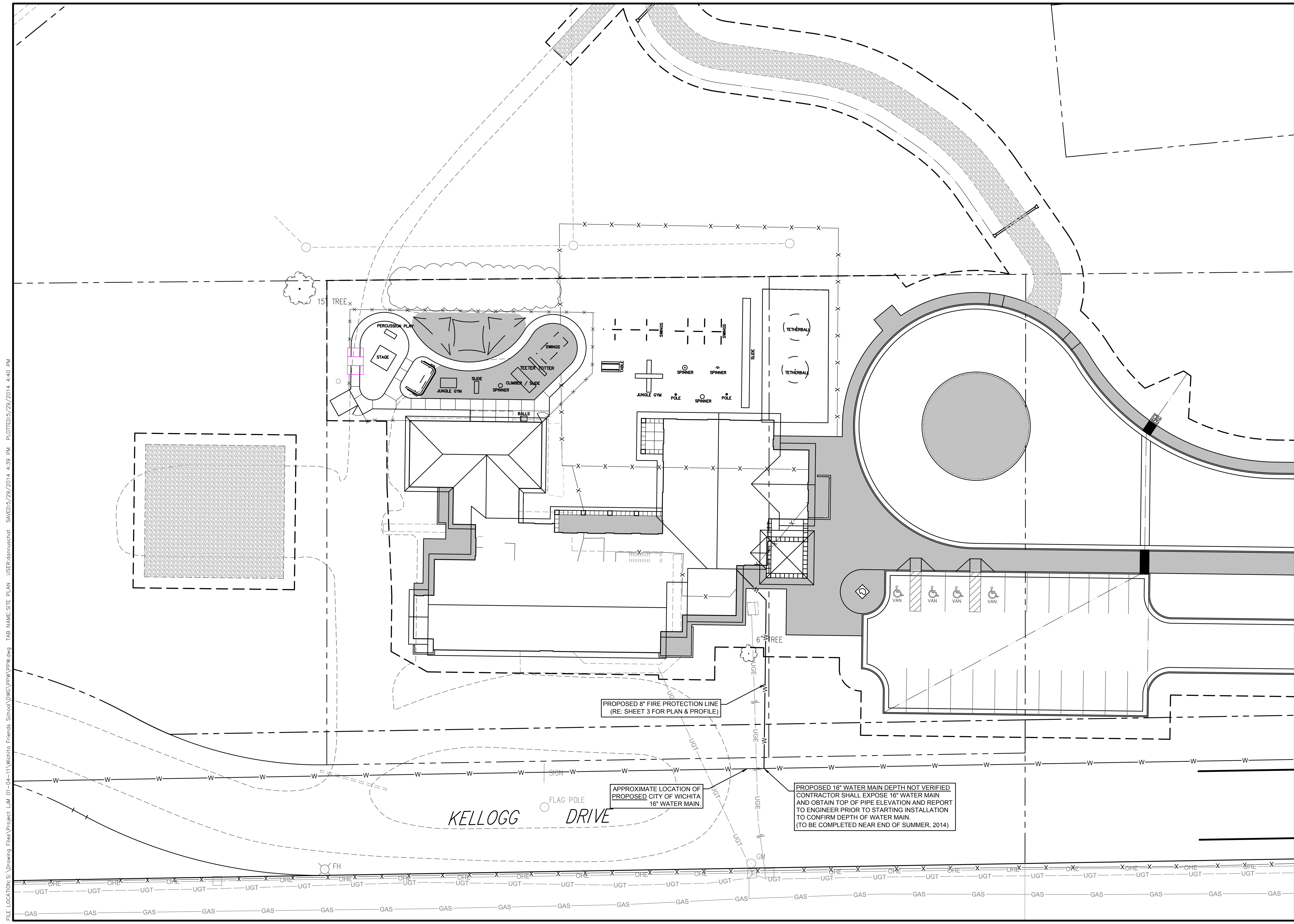
1935 WEST MAPLE STREET  
WICHITA, KANSAS 67213  
PH.(316)262-8808 FAX.(316)262-1669

ISSUED FOR PERMIT

PROJECT NO.: 20132145  
ISSUE DATE: 05/27/14  
CONTACT: L. MILLS / H. FORAKER  
CHECKED BY:

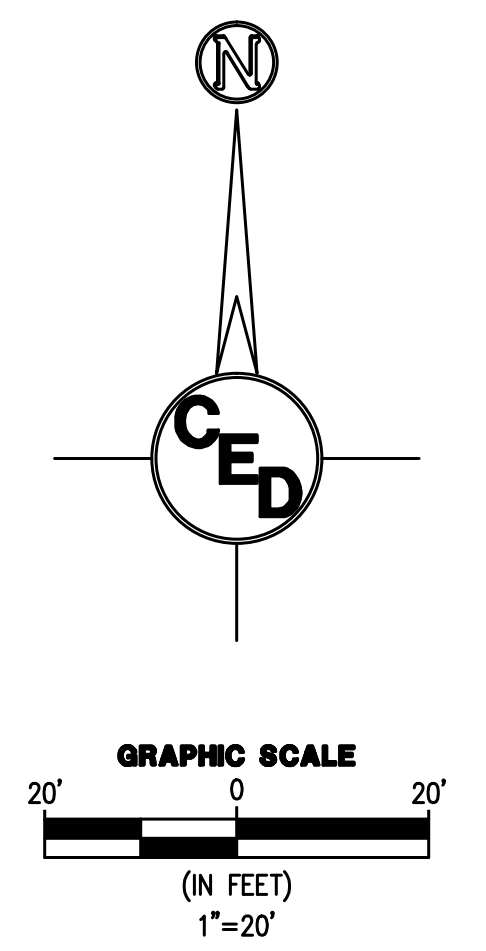
**COVER**

1 OF 5



FILE LOCATION: S:\Drawing Files\Project\_LAM\_01-04-11\Wichita Friends School\DWG\PPM\PPM.dwg TAB NAME: SITE PLAN USER: rdmuschet SAVED: 5/29/2014 4:39 PM PLOTTED: 5/29/2014 4:40 PM

REV.	DESCRIPTION	DATE



**PROPOSED FIRE PROTECTION LINE**

TO SERVE

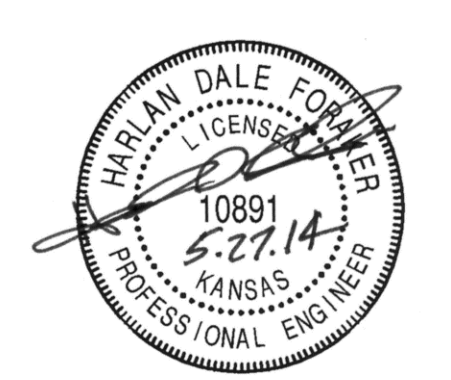
**WICHITA FRIENDS SCHOOL**

14700 WEST KELLOGG  
SECTION 26, T27S, R2W  
WICHITA, SEDGWICK COUNTY, KS

CERTIFIED ENGINEERING DESIGN, P.A.  
CIVIL ENGINEERING SERVICES



1935 WEST MAPLE STREET  
WICHITA, KANSAS 67213  
PH.(316)262-8808 FAX.(316)262-1669



ISSUED FOR PERMIT

PROJECT NO.: 20132145  
ISSUE DATE: 05/27/14  
CONTACT: L. MILLS / H. FORAKER  
CHECKED BY:

**SITE PLAN**

**2** OF 5

PROPOSED 8" FIRE PROTECTION LINE  
(RE: SHEET 3 FOR PLAN & PROFILE)

APPROXIMATE LOCATION OF  
PROPOSED CITY OF WICHITA  
16" WATER MAIN.

PROPOSED 16" WATER MAIN DEPTH NOT VERIFIED  
CONTRACTOR SHALL EXPOSE 16" WATER MAIN  
AND OBTAIN TOP OF PIPE ELEVATION AND REPORT  
TO ENGINEER PRIOR TO STARTING INSTALLATION  
TO CONFIRM DEPTH OF WATER MAIN.  
(TO BE COMPLETED NEAR END OF SUMMER, 2014)

KELLOGG DRIVE

FLAG POLE

6" TREE

15' TREE

FH

SIGN

UGT

UGT

UGT

UGT

UGT

UGT

UGT

UGT

GAS

GAS

GAS

GAS

GAS

GAS

GAS

GAS

GAS

GAS

GAS

GAS

GAS

GAS

GAS

GAS

GAS

GAS

GAS

GAS

GAS

GAS

GAS

GAS

GAS

GAS

GAS

GAS

GAS

GAS

GAS

GAS

GAS

GAS

GAS

GAS

GAS

GAS

GAS

GAS

GAS

GAS

GAS

GAS

GAS

GAS

GAS

GAS

GAS

GAS

GAS

GAS

GAS

GAS

GAS

GAS

GAS

GAS

GAS

GAS

GAS

GAS

GAS

GAS

GAS

GAS

GAS

GAS

GAS

GAS

GAS

GAS

GAS

GAS

GAS

GAS

GAS

GAS

GAS

GAS

GAS

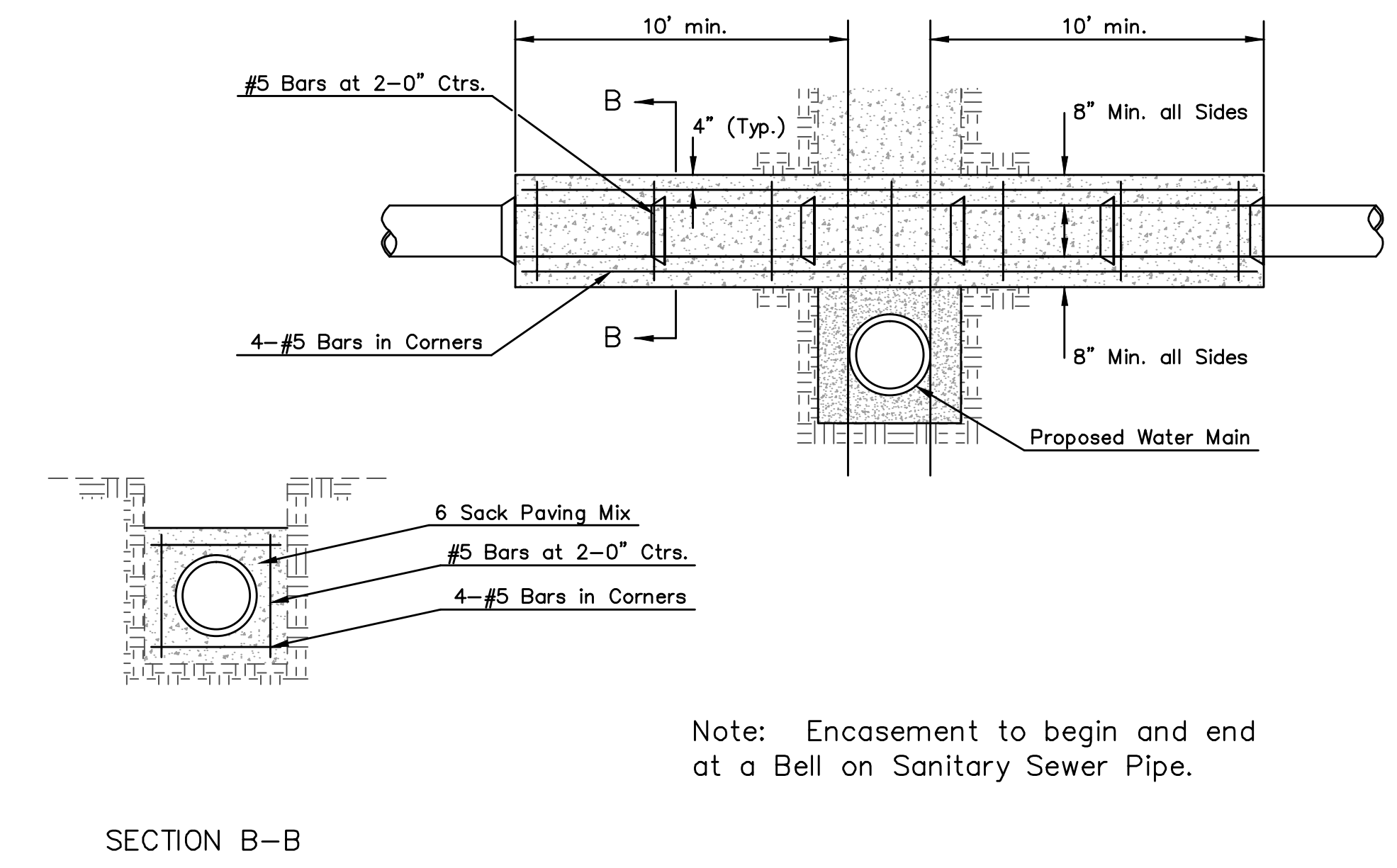
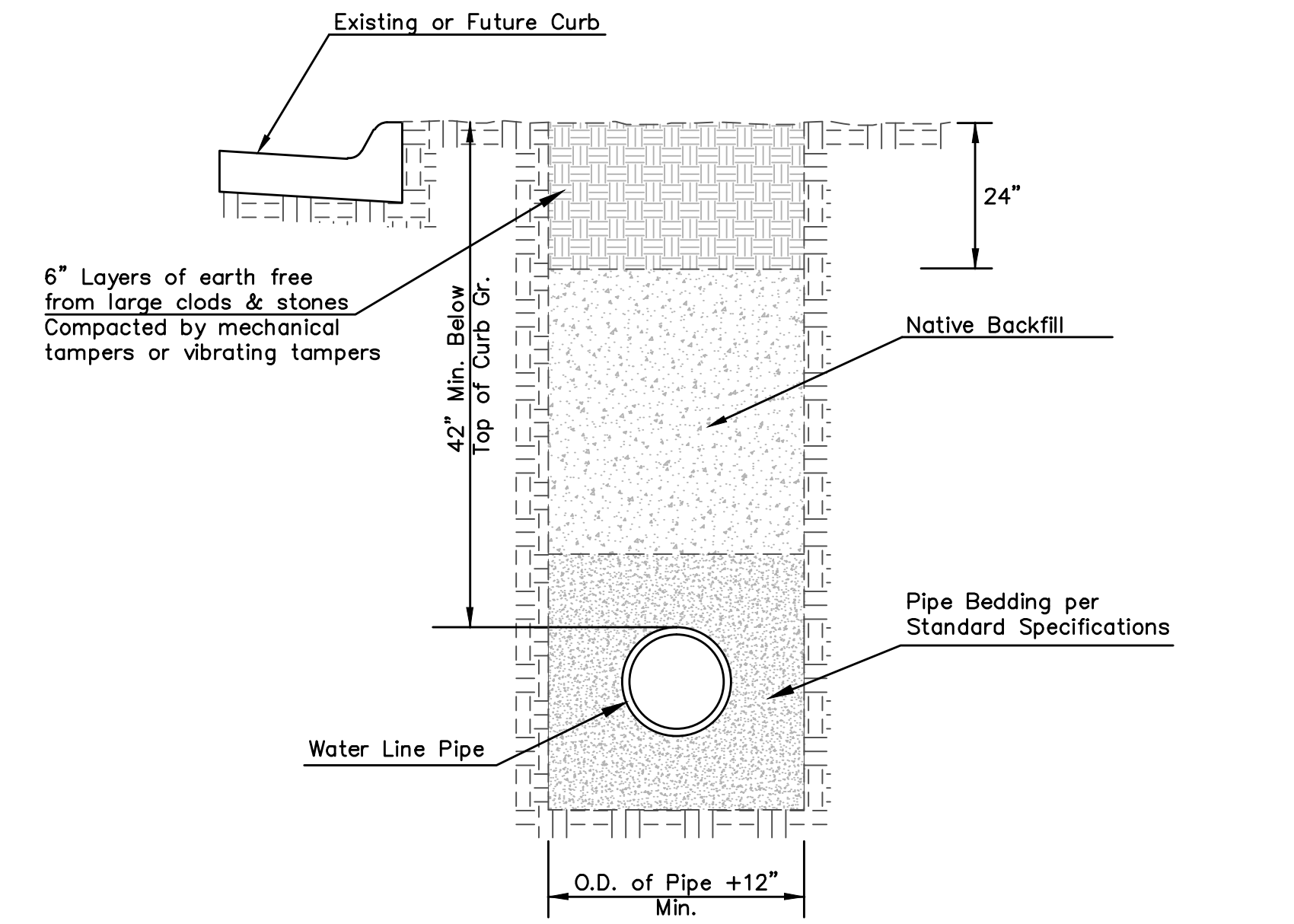
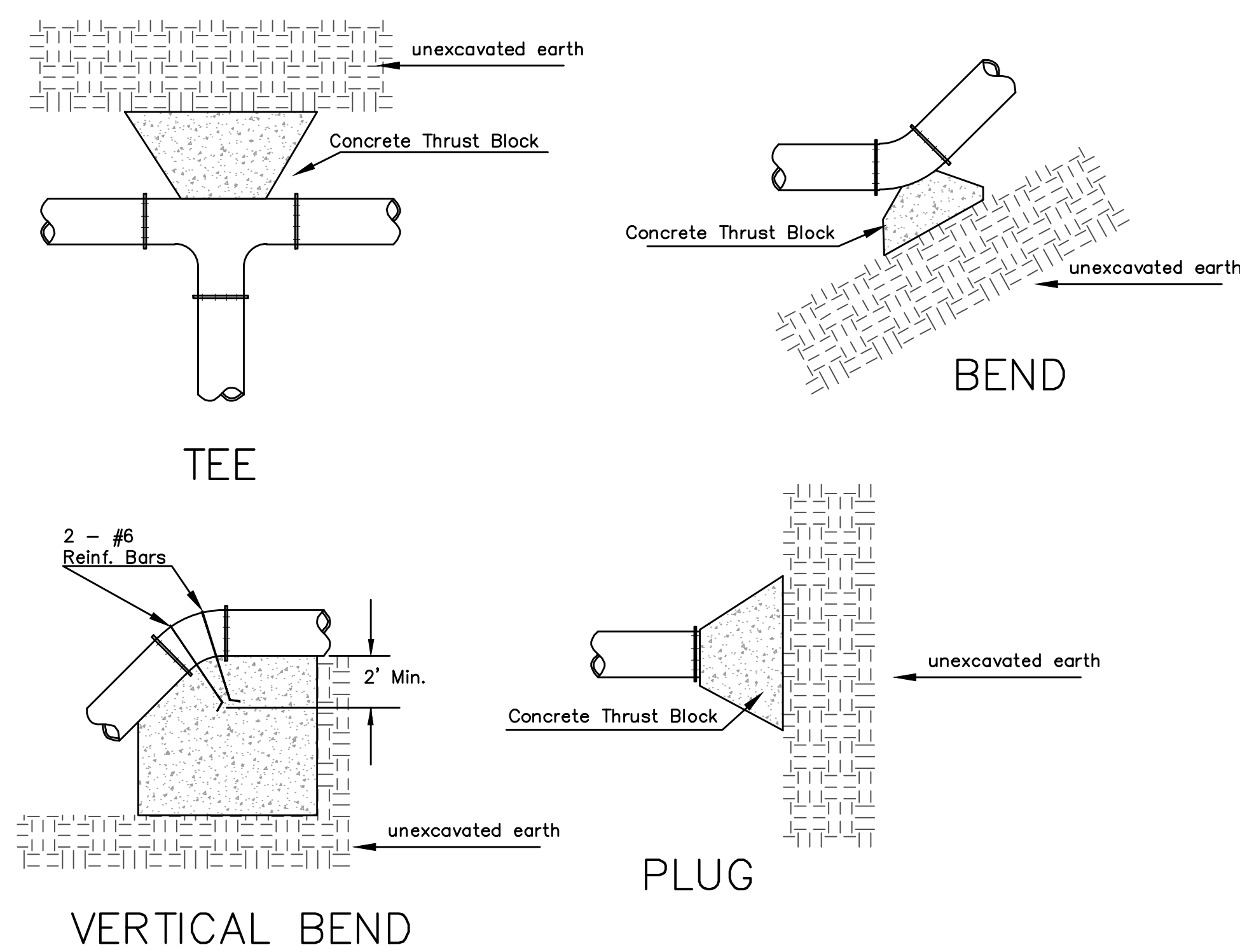
GAS

GAS

GAS

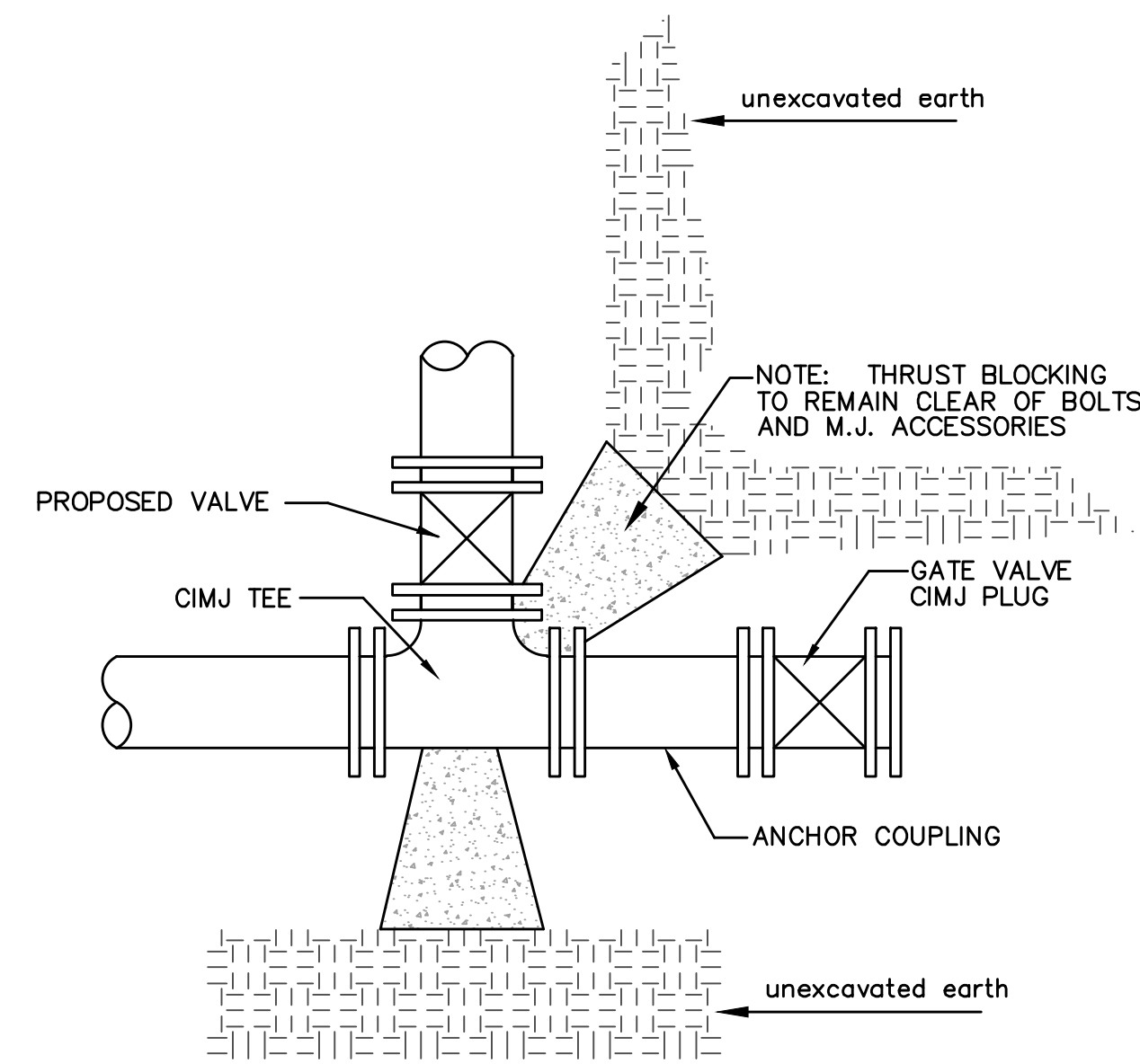






PIPE SIZE	THRUST AT FITTINGS IN TONS-AT 150#/IN <sup>2</sup> P					
	PLUG	90°	45°	22 1/2'	11 1/4'	TEE
6"	2.8	3.95	2.15	1.09	.55	2.8
8"	4.9	6.95	3.75	1.90	.96	4.9
12"	11.4	16.1	8.75	4.45	2.25	11.4
16"	20.15	28.5	15.4	7.85	3.95	20.15
20"	31.15	44.0	23.85	12.15	6.10	31.15
24"	44.55	63.0	34.1	17.4	8.75	44.55

TYPICAL THRUST BLOCKS

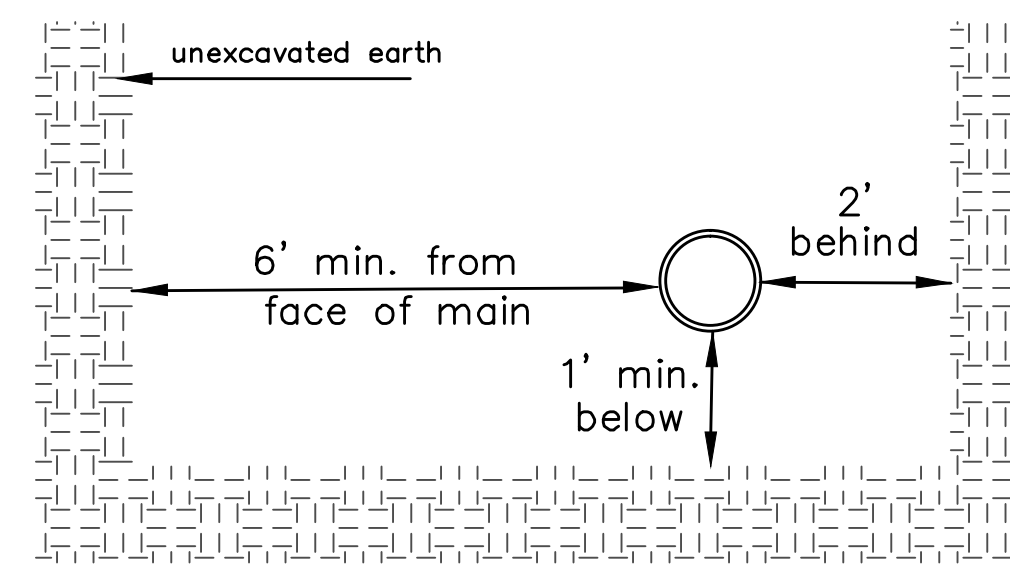


KEY BLOCK DETAIL

\* PLANS GOVERN UNLESS OTHERWISE NOTED ON PLANS

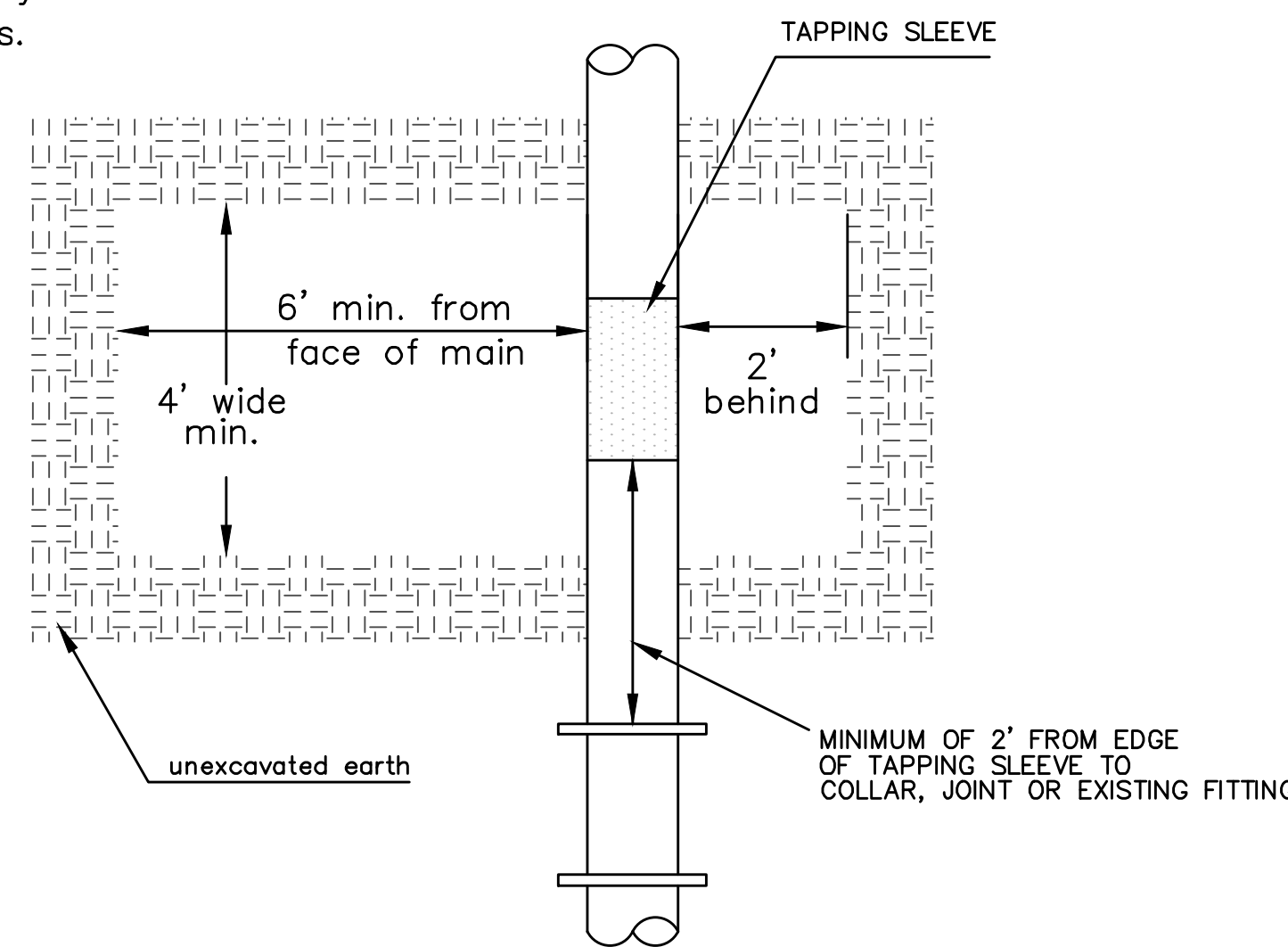
TRENCH COMPACTION IN ROAD RIGHT-OF-WAY

SIDE VIEW



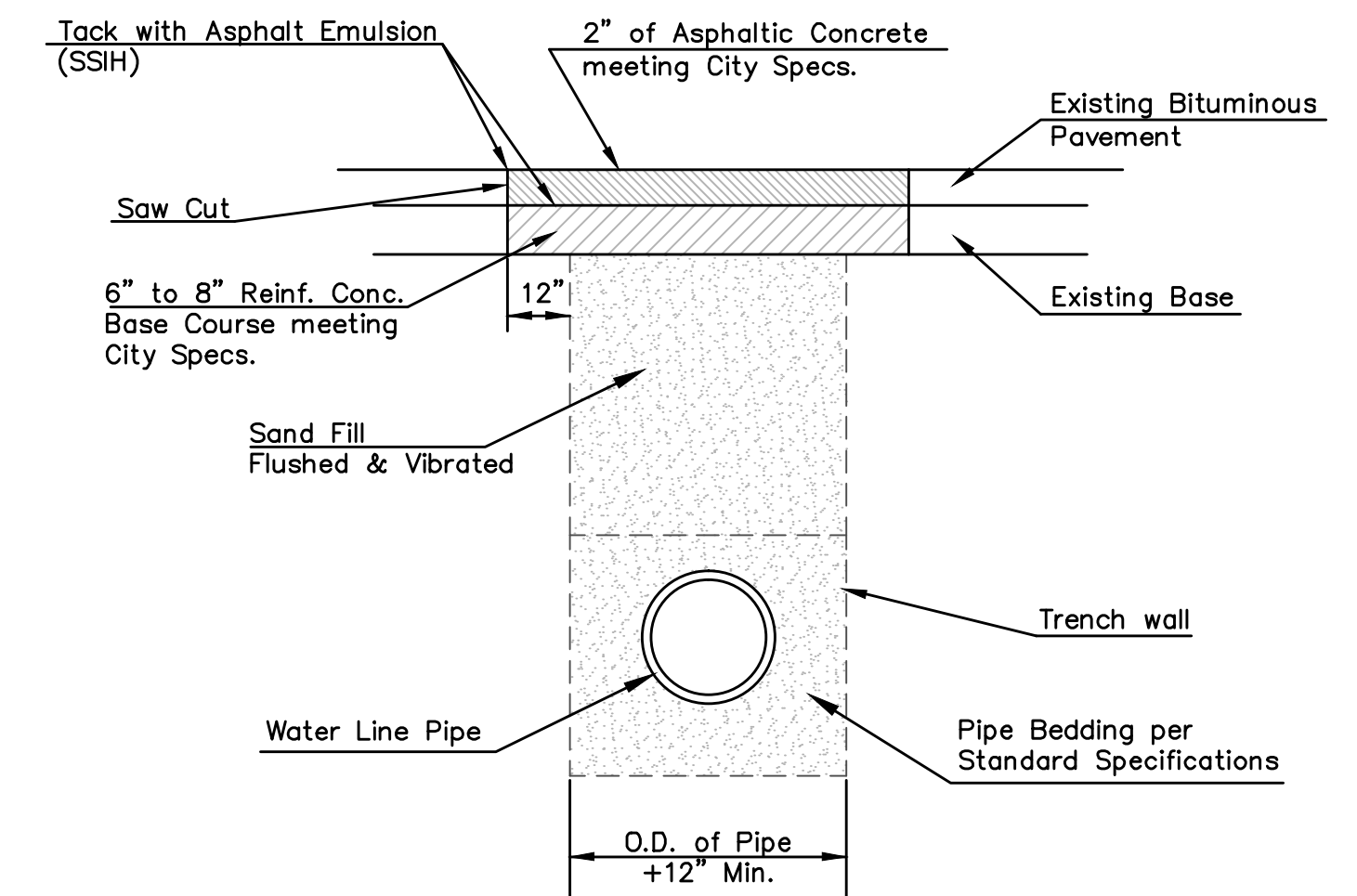
Note: When shoring is required it is to be per The City of Wichita Standard Specifications.

TOP VIEW



EXCAVATION FOR WET TAP

PAVEMENT REPLACEMENT & TRENCH COMPACTION UNDER EXISTING AND PROPOSED CITY ROADS



04/24/14

**CITY OF WICHITA**  
PUBLIC WORKS & UTILITIES ENGINEERING DIVISION

REVISED APRIL 2014

MISCELLANEOUS WATER DETAILS		
CITY ENGINEER GARY JANZEN, P.E.		
PROJECT NUMBER 1817 PPW	OCA NUMBER 6078653	DATE 04/2014
CITY ENGINEER'S OFFICE CITY HALL - SEVENTH FLOOR 455 NORTH MAIN STREET WICHITA, KANSAS 67202-1620 (316) 268-4501		SHEET 5 of 5