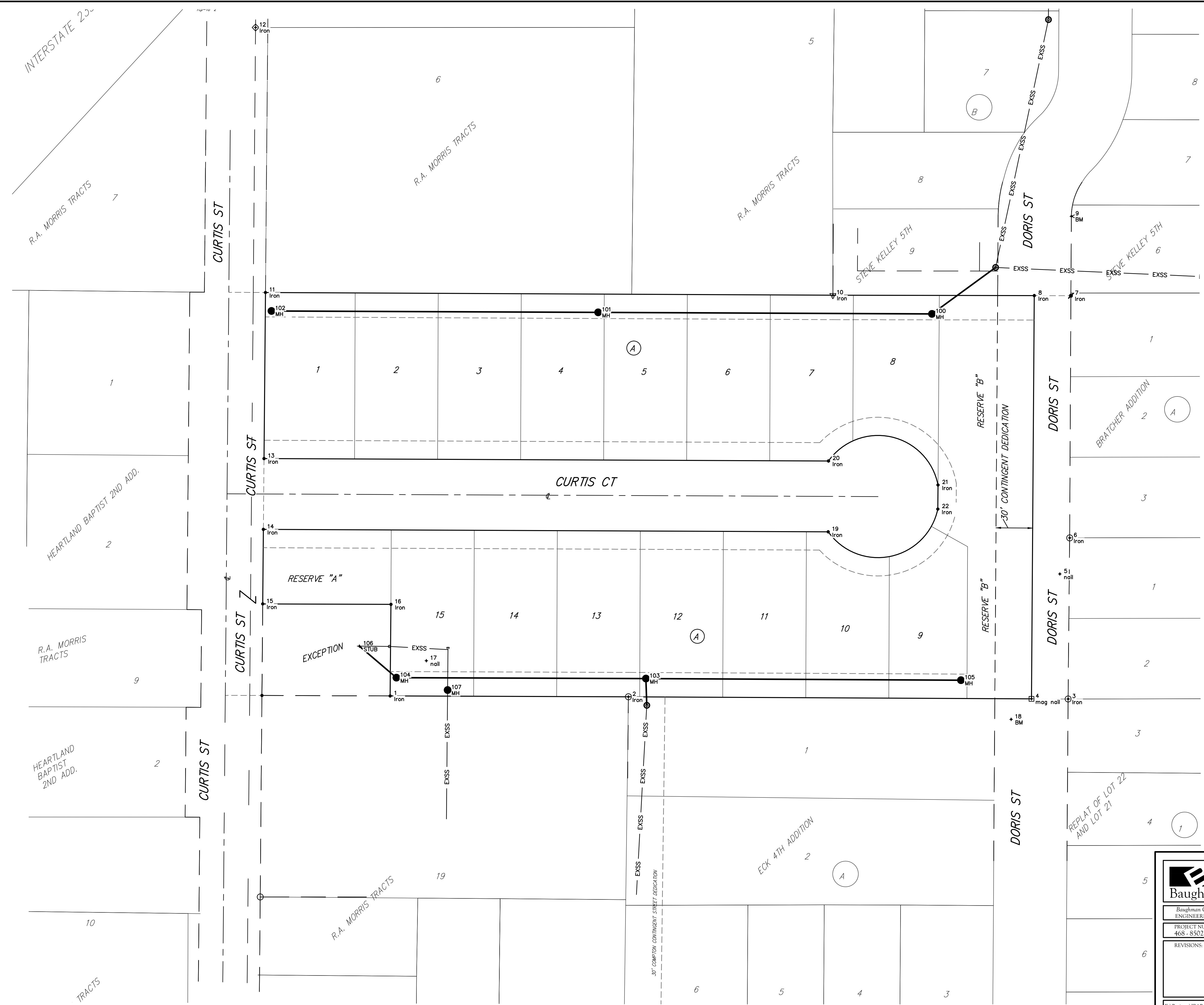
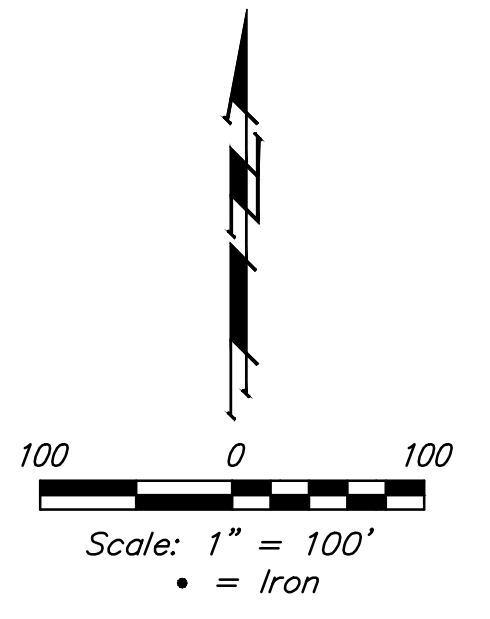


BENCHMARK:
 Square cut top of curb 16± south
 of SE corner of Reserve "B".
 Elev. = 1315.95 (NAVD88)

Point Table			
Point #	Northing	Easting	Description
1	5384.93	5122.77	Iron
2	5384.20	5317.89	Iron
3	5382.42	5677.95	Iron
4	5382.55	5647.95	mag nail
5	5484.82	5671.18	nail
6	5514.34	5679.22	Iron
7	5712.71	5680.27	Iron
8	5712.83	5650.27	Iron
9	5777.78	5680.65	BM
10	5713.14	5485.33	Iron
11	5715.38	5020.66	Iron
12	5932.42	5012.56	Iron
13	5579.35	5019.47	Iron
14	5521.36	5018.96	Iron
15	5460.32	5018.42	Iron
16	5459.93	5123.42	Iron
17	5413.76	5152.43	nail
18	5365.76	5631.30	BM
19	5519.38	5481.48	Iron
20	5577.38	5481.73	Iron
21	5557.73	5571.42	Iron
22	5538.00	5571.28	Iron
100	5697.85	5566.42	MH
101	5699.07	5293.09	MH
102	5700.22	5025.53	MH
103	5399.13	5332.17	MH
104	5399.91	5127.90	MH
105	5397.84	5590.16	MH
106	5425.71	5097.61	STUB
107	5389.76	5169.81	MH



	JBAR ADDITION COORDINATES Sanitary Sewer Improvements	
	<small>Baughman Company, P.A. 315 Ellis St. Wichita, KS 67211 P 316-262-7271 F 316-262-0149 ENGINEERING SURVEYING PLANNING LANDSCAPE ARCHITECTURE</small>	
PROJECT NUMBER 468 - 85024	DESIGN AEG	DRAWN JAK
REVISIONS:	APPROVED DATE 4/21/15	SCALE Noted
		SHEET 12 OF 13