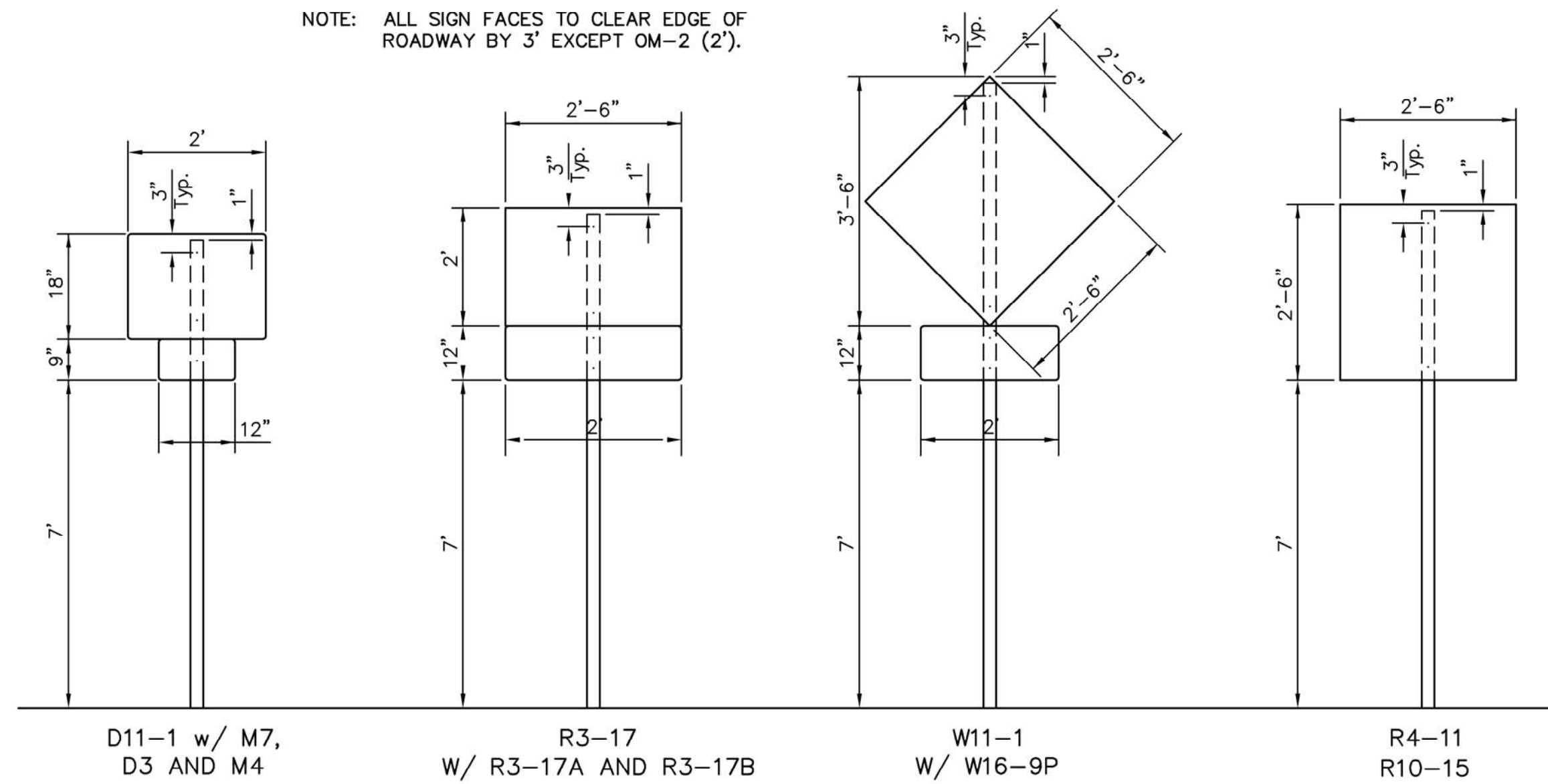


**BICYCLE TRAFFIC CONTROL SIGNS & SIGN POSTS**

STATION	LOCATION FROM BL.	SIGN TYPE													SIGN POST LENGTH BREAKAWAY LENGTH 1 3/4" x 1 3/4" x VARIES		
		D11-1	D3-1	M4-11	M4-12	M4-13	M7-1R	M7-1L	M7-2	M7-5	R4-11	R10-15R	R10-15L	W11-1		W16-9P	
8+48	RT.																11'-6"
10+38	RT.	1															9'-3"
10+38	LT.	1			1												9'-3"
10+82	RT.																9'-6"
19+72	LT.																9'-6"
20+43	LT.	1															9'-3"
21+79	RT.	1															9'-3"
22+50	RT.																9'-6"
28+50	RT.	1															9'-3"
28+77	LT.																9'-6"
29+27	RT.																9'-6"
29+50	LT.	1															9'-3"
35+50	LT.																9'-6"
36+00	RT.	1															9'-3"
36+22	LT.	1															9'-3"
37+00	LT.	1															9'-3"
37+19	RT.	1															9'-3"
39+14	LT.	1															9'-3"
39+38	RT.	1															9'-3"
52+14	RT.	1															9'-3"
52+14	LT.	1															9'-3"
-	RT.																11'-6"
53+28	LT.	1															9'-3"
53+30	RT.	1															9'-3"
53+78	RT.																9'-6"
57+27	LT.																9'-6"
57+46	RT.																9'-6"
57+93	LT.	1															9'-3"
59+59	RT.	1															9'-3"
60+08	LT.																9'-6"
60+54	RT.																9'-6"
63+32	LT.	1															9'-3"
64+18	RT.	1															9'-3"
66+82	LT.																9'-6"
67+00	RT.	1															9'-3"
67+80	RT.																9'-6"
68+00	LT.	1															9'-3"
-	RT.																11'-6"
69+25	RT.	1															9'-3"
69+74	LT.	1															9'-3"
76+08	LT.	1															9'-3"
77+08	RT.	1															9'-3"
79+94	RT.	1															9'-3"
79+94	LT.	1															9'-3"
80+96	RT.	1															9'-3"
81+41	RT.	1															9'-3"
86+70	RT.	1															9'-3"
86+70	LT.	1															9'-3"
87+85	RT.	1															9'-3"
87+93	LT.	1															9'-3"
88+58	RT.																9'-6"
89+45	LT.																9'-6"
89+50	RT.																9'-6"
91+12	RT.	1															9'-3"
91+58	RT.																9'-6"
95+10	LT.																9'-6"
100+71	LT.																9'-6"
101+33	RT.																9'-6"
101+59	LT.	1															9'-3"
103+00	RT.	1															9'-3"
103+50	RT.																9'-6"
103+61	LT.																9'-6"
113+06	LT.																9'-6"
113+55	RT.	1															9'-3"
113+55	LT.	1															9'-3"
<b>TOTAL</b>		<b>39</b>	<b>0</b>	<b>2</b>	<b>2</b>	<b>0</b>	<b>5</b>	<b>5</b>	<b>0</b>	<b>0</b>	<b>16</b>	<b>6</b>	<b>1</b>	<b>3</b>	<b>3</b>		
		D11-1	D3-1	M4-11	M4-12	M4-13	M7-1R	M7-1L	M7-2	M7-5	R4-11	R10-15R	R10-15L	W11-1	W16-9P		

SIGN POST LENGTH SUMMARY	
BREAKAWAY SIGN POST : 1 3/4" x 1 3/4" x VARIES	
LENGTH	TOTAL # POSTS
9'-3"	39
9'-6"	23
11'-6"	3

NOTE: ALL SIGN FACES TO CLEAR EDGE OF ROADWAY BY 3' EXCEPT OM-2 (2').



**BIKE SIGN MOUNTING DETAILS**  
(SEE NOTE #5)

SIGN DESCRIPTION				
CLASS.	TYPE	PROCESS	SIZE	AREA
D11-1	BIKE ROUTE	REV. SCREEN	24" x 18"	3.0 Sq. Ft.
D3-1	BIKE ROUTE NAME PLAQUE	REV. SCREEN	24" x 6"	1.0 Sq. Ft.
M4-11	"BEGIN" PLAQUE	REV. SCREEN	12" x 4"	0.33 Sq. Ft.
M4-12	"END" PLAQUE	REV. SCREEN	12" x 4"	0.33 Sq. Ft.
M4-13	"TO" PLAQUE	REV. SCREEN	12" x 4"	0.33 Sq. Ft.
M7-1R	RIGHT ARROW PLAQUE	REV. SCREEN	12" x 9"	0.75 Sq. Ft.
M7-1L	LEFT ARROW PLAQUE	REV. SCREEN	12" x 9"	0.75 Sq. Ft.
M7-2	UP (STRAIGHT) ARROW PLAQUE	REV. SCREEN	12" x 9"	0.75 Sq. Ft.
M7-5	LEFT AND RIGHT ARROW PLAQUE	REV. SCREEN	12" x 9"	0.75 Sq. Ft.
R3-17	BIKE LANE	REV. SCREEN	30" x 24"	5.0 Sq. Ft.
R3-17A	"AHEAD" PLAQUE	REV. SCREEN	30" x 12"	2.5 Sq. Ft.
R3-17B	"ENDS" PLAQUE	REV. SCREEN	30" x 12"	2.5 Sq. Ft.
R4-11	BICYCLES MAY USE FULL LANE	REV. SCREEN	30" x 30"	6.25 Sq. Ft.
R10-15R	TURNING VEHICLES YIELD TO BIKES	REV. SCREEN	30" x 30"	6.25 Sq. Ft.
R10-15L	TURNING VEHICLES YIELD TO BIKES	REV. SCREEN	30" x 30"	6.25 Sq. Ft.
W11-1	BICYCLE WARNING	REV. SCREEN	24" x 24"	4.0 Sq. Ft.
W16-9P	"AHEAD" PLAQUE	REV. SCREEN	24" x 12"	2.0 Sq. Ft.

**NOTES:**

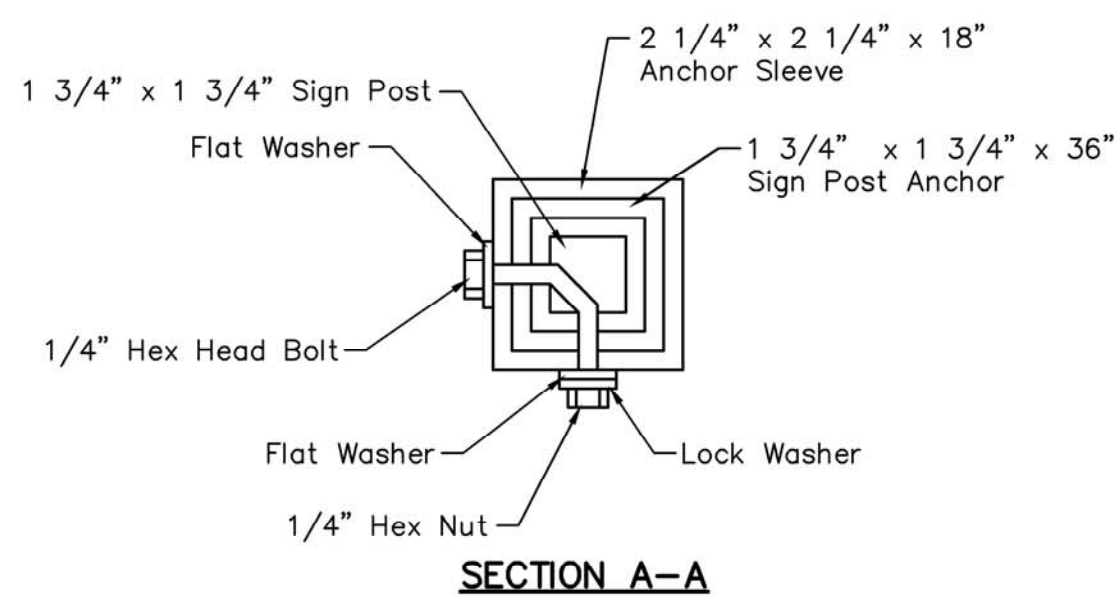
- IN ALL INSTALLATIONS THE FIRST HOLE ABOVE THE FINISHED GRADE LEVEL IN ALL THREE UNITS MUST BE IN LINE FOR INSERTION OF THE BOLT. ALL BOLTS AND NUTS FOR FASTENING THE SIGNS AND SIGN
- POST ASSEMBLY SHALL COMPLY WITH SECTION 1614 AND ALL WASHERS SHALL COMPLY WITH SECTION 1614 OF THE STANDARD SPECIFICATIONS FOR STATE ROAD AND BRIDGE CONSTRUCTION (1980 EDITION) AND SHALL BE SUBSIDIARY ITEM. ALL LETTER, NUMBER & SYMBOL SIZES, SPACING & COLORS
- AND SIGN COLORS SHALL CONFORM TO THE CURRENT "MANUAL ON UNIFORM TRAFFIC CONTROL DEVICES."
- ALL SIGN MATERIALS TO BE 0.080" ALUMINUM.
- VEHICLE TRAFFIC CONTROL SIGN DIMENSIONS AND MOUNTING HEIGHT SHALL CONFORM TO THE CURRENT "MUTCD".

**PAVEMENT INSTALLATION SEQUENCE**

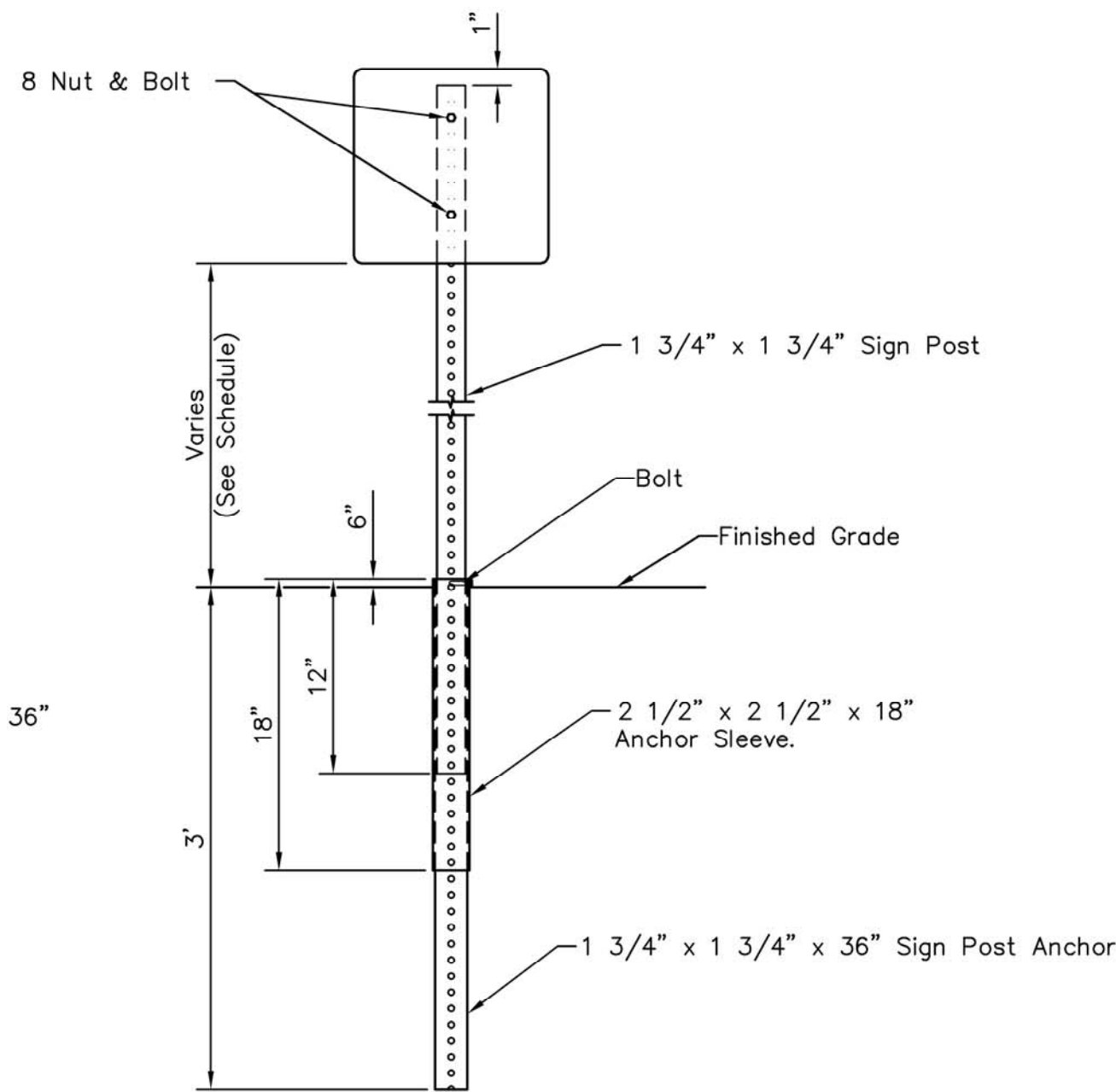
- SIGN POST ANCHOR DRIVEN INTO SUBGRADE PRIOR TO THE PLACEMENT OF THE PAVEMENT.
- ANCHOR SLEEVE DRIVEN INTO SUBGRADE OVER THE SIGN POST ANCHOR PRIOR TO THE PLACEMENT OF THE PAVEMENT
- INSERT SIGN POST INTO THE SIGN POST ANCHOR AND BOLT IN PLACE.

**GROUND INSTALLATION SEQUENCE**

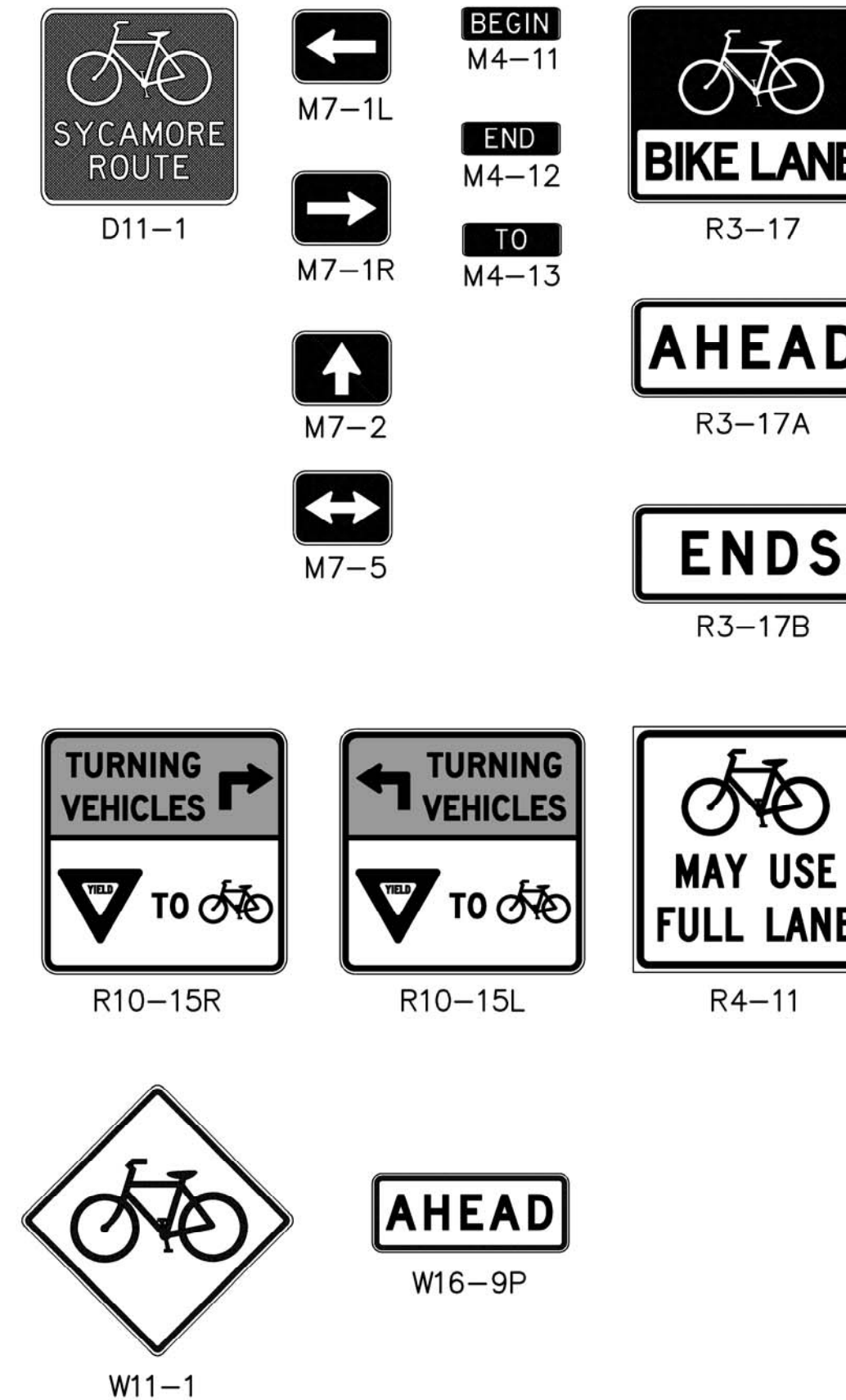
- SIGN POST ANCHOR DRIVEN INTO GROUND
- ANCHOR SLEEVE DRIVEN INTO THE GROUND OVER THE SIGN POST ANCHOR.
- INSERT SIGN POST INTO THE SIGN POST ANCHOR AND BOLT IN PLACE.



**BREAK-AWAY SIGN POST DETAIL**



STATE	PROJECT NO.	YEAR	SHEET NO.	TOTAL SHEETS
KANSAS	87 TE-0622-01	2014	13	13



REV 05.20.2015 BDT

	<b>BIKE LANE SIGNAGE DETAILS AND QTYS.</b>		
	CITY ENGINEER <b>GARY JANZEN P.E.</b>		
	PROJECT NUMBER 472-85113	OCA NUMBER 707056	DATE AUG 2014
	CITY ENGINEER'S OFFICE CITY HALL - SEVENTH FLOOR 455 NORTH MAIN STREET WICHITA, KANSAS 67202-1620 (316) 268-4501 (316) 268-4114 FAX		DESIGN BDT
			SHEET 11 of 14