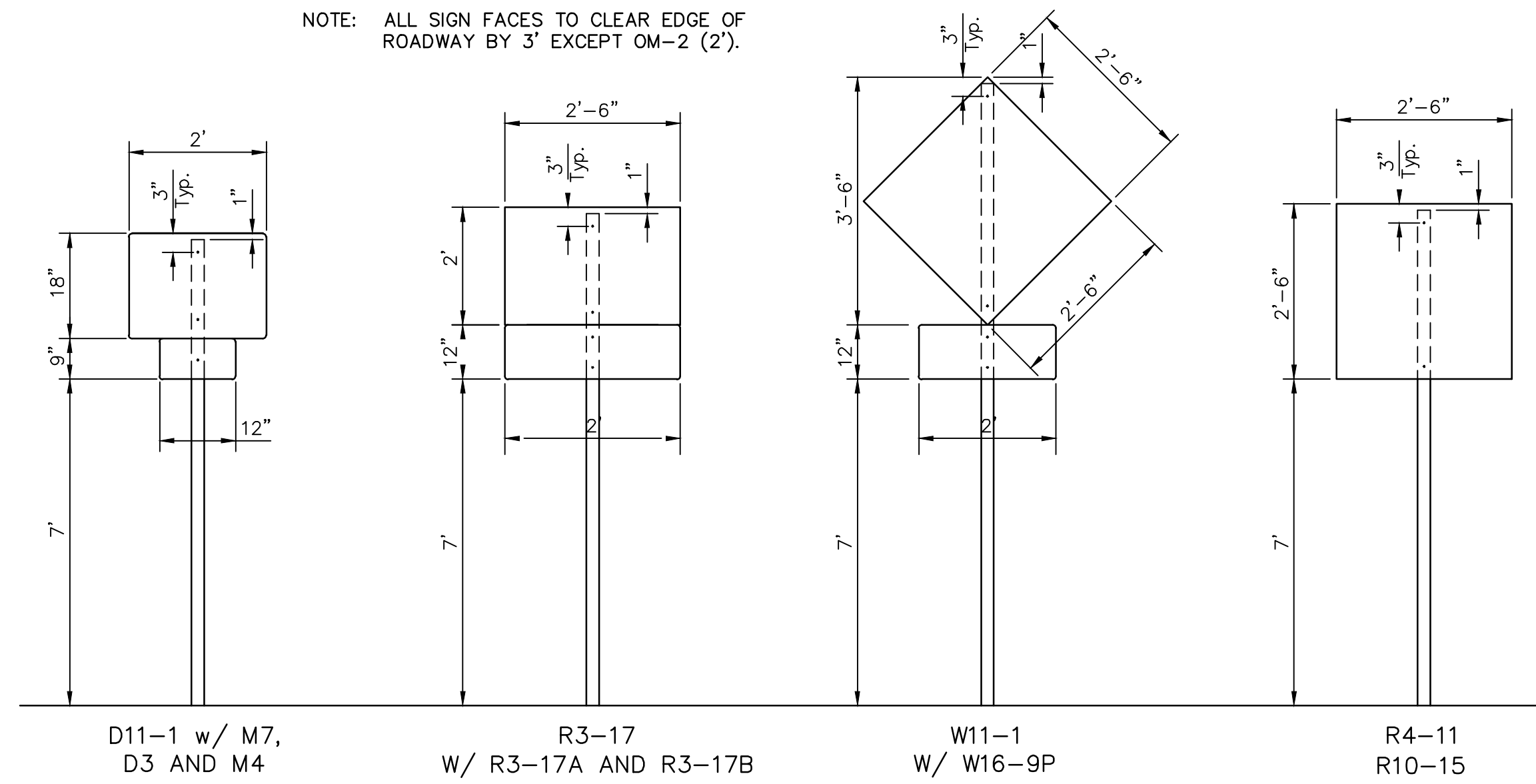


BICYCLE TRAFFIC CONTROL SIGNS & SIGN POSTS

| STATION | LOCATION FROM BL. | SIGN TYPE | | | | | | | | | | | | | | SIGN POST LENGTH | |
|---------|-------------------|-----------|------|-------|-------|-------|-------|-------|------|------|-------|---------|---------|-------|--------|------------------|--------|
| | | D11-1 | D3-1 | M4-11 | M4-12 | M4-13 | M7-1R | M7-1L | M7-2 | M7-5 | R4-11 | R10-15R | R10-15L | W11-1 | W16-9P | | |
| 8+48 | RT. | | | | | | | | | | | | | | 1 | 1 | 14'-6" |
| 10+38 | RT. | 1 | | | | | | | | | | | | | | | 12'-3" |
| 10+38 | LT. | 1 | 1 | | | | | | | | | | | | | | 12'-3" |
| 10+82 | RT. | | | 1 | | | | | | 1 | | | | | | | 12'-6" |
| 19+72 | LT. | | | | 1 | | | | | | | | | | | | 12'-6" |
| 20+43 | LT. | 1 | 1 | | | | | | | | | | | | | | 12'-3" |
| 21+79 | RT. | 1 | 1 | | | | | | | | | | | | | | 12'-3" |
| 22+50 | RT. | | | | | | | | | | | | | | | | 12'-6" |
| 28+50 | RT. | 1 | 1 | | | | | | | | | | | | | | 12'-3" |
| 28+77 | LT. | | | | | | | | | | | | | | | | 12'-6" |
| 29+27 | RT. | | | | | | | | | | | | | | | | 12'-6" |
| 29+50 | LT. | 1 | 1 | | | | | | | | | | | | | | 12'-3" |
| 35+50 | LT. | | | | | | | | | | | | | | | | 12'-6" |
| 36+00 | RT. | 1 | 1 | | | | | | | | | | | | | | 12'-3" |
| 36+22 | LT. | 1 | 1 | | | | | | | | | | | | | | 12'-3" |
| 37+00 | LT. | 1 | 1 | | | | | | | | | | | | | | 12'-3" |
| 37+19 | RT. | 1 | 1 | | | | | | | | | | | | | | 12'-3" |
| 39+14 | LT. | 1 | 1 | | | | | | | | | | | | | | 12'-3" |
| 39+38 | RT. | 1 | 1 | | | | | | | | | | | | | | 12'-3" |
| 52+14 | RT. | 1 | 1 | | | | | | | | | | | | | | 12'-3" |
| 52+14 | LT. | 1 | 1 | | | | | | | | | | | | | | 12'-3" |
| - | RT. | | | | | | | | | | | | | | 1 | 1 | 14'-6" |
| 53+28 | LT. | 1 | 1 | | | | | | | | | | | | | | 12'-3" |
| 53+30 | RT. | 1 | 1 | | | | | | | | | | | | | | 12'-3" |
| 53+78 | RT. | | | | | | | | | | | | | | | | 12'-6" |
| 57+27 | LT. | | | | | | | | | | | | | | | | 12'-6" |
| 57+46 | RT. | | | | | | | | | | | | | | | | 12'-6" |
| 57+93 | LT. | 1 | 1 | | | | | | | | | | | | | | 12'-3" |
| 59+59 | RT. | 1 | 1 | | | | | | | | | | | | | | 12'-3" |
| 60+08 | LT. | | | | | | | | | | | | | | | | 12'-6" |
| 60+54 | RT. | | | | | | | | | | | | | | | | 12'-6" |
| 63+32 | LT. | 1 | 1 | | | | | | | | | | | | | | 12'-3" |
| 64+18 | RT. | 1 | 1 | | | | | | | | | | | | | | 12'-3" |
| 66+82 | LT. | | | | | | | | | | | | | | | | 12'-6" |
| 67+00 | RT. | 1 | 1 | | | | | | | | | | | | | | 12'-3" |
| 67+80 | RT. | | | | | | | | | | | | | | | | 12'-6" |
| 68+00 | LT. | 1 | 1 | | | | | | | | | | | | | | 12'-3" |
| - | RT. | | | | | | | | | | | | | | 1 | 1 | 14'-6" |
| 69+25 | RT. | 1 | 1 | | | | | | | | | | | | | | 12'-3" |
| 69+74 | LT. | 1 | 1 | | | | | | | | | | | | | | 12'-3" |
| 76+08 | LT. | 1 | 1 | | | | | | | | | | | | | | 12'-3" |
| 77+08 | RT. | 1 | 1 | | | | | | | | | | | | | | 12'-3" |
| 79+94 | RT. | 1 | 1 | | | | | | | | | | | | | | 12'-3" |
| 79+94 | LT. | 1 | 1 | | | | | | | | | | | | | | 12'-3" |
| 80+96 | RT. | 1 | 1 | | | | | | | | | | | | | | 12'-3" |
| 81+41 | RT. | 1 | 1 | | | | | | | | | | | | | | 12'-3" |
| 86+70 | RT. | 1 | 1 | | | | | | | | | | | | | | 12'-3" |
| 86+70 | LT. | 1 | 1 | | | | | | | | | | | | | | 12'-3" |
| 87+85 | RT. | 1 | 1 | | | | | | | | | | | | | | 12'-3" |
| 87+93 | LT. | 1 | 1 | | | | | | | | | | | | | | 12'-3" |
| 88+58 | RT. | | | | | | | | | | | | | | | | 12'-6" |
| 89+45 | LT. | | | | | | | | | | | | | | | | 12'-6" |
| 89+50 | RT. | | | | | | | | | | | | | | | | 12'-6" |
| 91+12 | RT. | 1 | 1 | | | | | | | | | | | | | | 12'-3" |
| 91+58 | RT. | | | | | | | | | | | | | | | | 12'-6" |
| 95+10 | LT. | | | | | | | | | | | | | | | | 12'-6" |
| 100+71 | LT. | | | | | | | | | | | | | | | | 12'-6" |
| 101+33 | RT. | | | | | | | | | | | | | | | | 12'-6" |
| 101+59 | LT. | 1 | 1 | | | | | | | | | | | | | | 12'-3" |
| 103+00 | RT. | 1 | 1 | | | | | | | | | | | | | | 12'-3" |
| 103+50 | RT. | | | | | | | | | | | | | | | | 12'-6" |
| 103+61 | LT. | | | | | | | | | | | | | | | | 12'-6" |
| 113+06 | LT. | | | | | | | | | | | | | | | | 12'-6" |
| 113+55 | RT. | 1 | 1 | | | | | | | | | | | | | | 12'-3" |
| 113+55 | LT. | 1 | 1 | 1 | | | | | | | | | | | | | 12'-3" |
| TOTAL | | 39 | 39 | 2 | 2 | 0 | 5 | 5 | 0 | 0 | 16 | 6 | 1 | 3 | 3 | | |
| | | D11-1 | D3-1 | M4-11 | M4-12 | M4-13 | M7-1R | M7-1L | M7-2 | M7-5 | R4-11 | R10-15R | R10-15L | W11-1 | W16-9P | | |

| SIGN POST LENGTH SUMMARY | |
|--|---------------|
| BREAKAWAY SIGN POST : 1 3/4" x 1 3/4" x VARIES | |
| LENGTH | TOTAL # POSTS |
| 12'-3" | 39 |
| 12'-6" | 23 |
| 14'-6" | 3 |

NOTE: ALL SIGN FACES TO CLEAR EDGE OF ROADWAY BY 3' EXCEPT OM-2 (2').



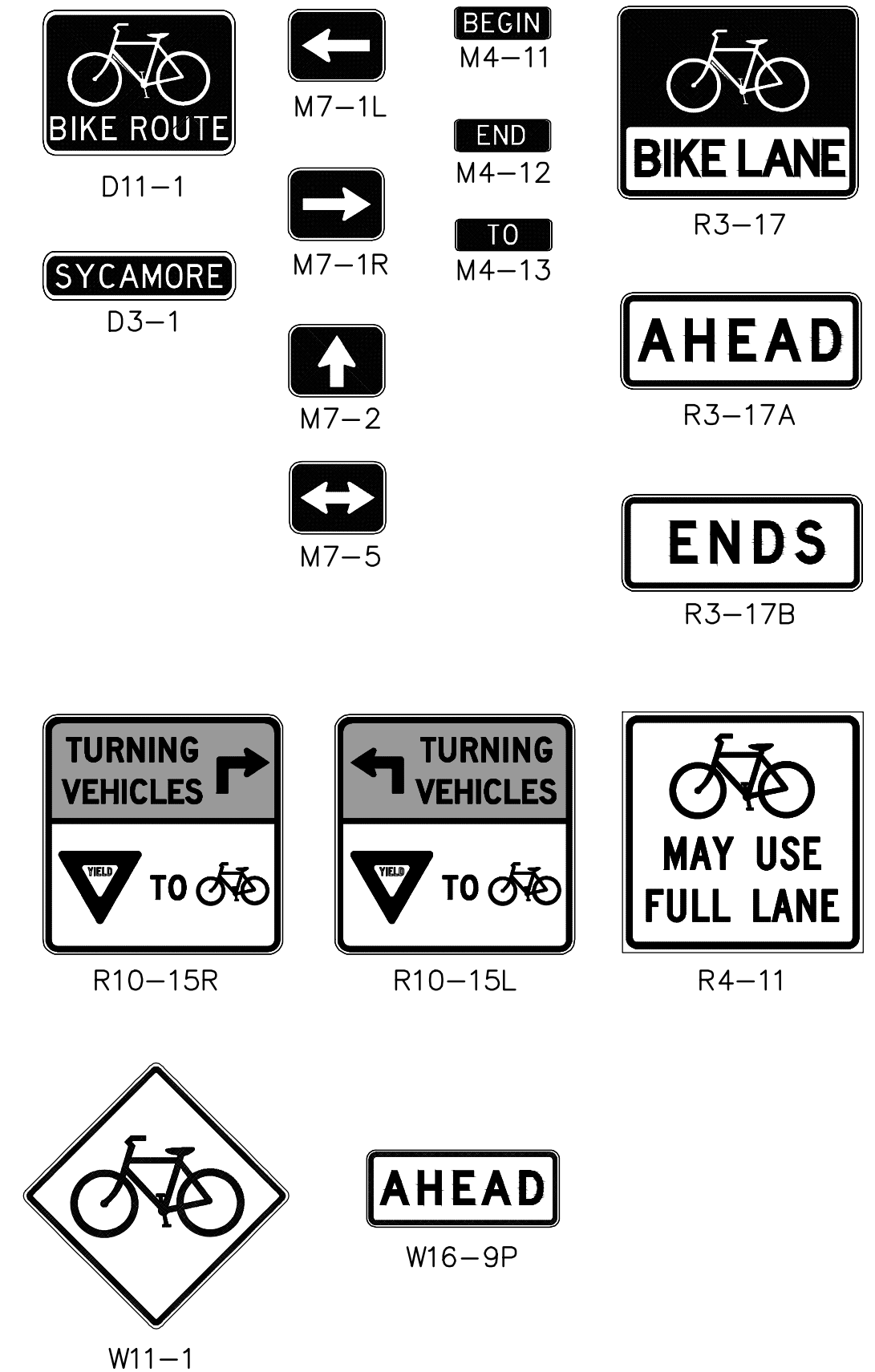
BIKE SIGN MOUNTING DETAILS

(SEE NOTE #5)

| SIGN DESCRIPTION | | | | |
|------------------|---------------------------------|-------------|-----------|--------------|
| CLASS. | TYPE | PROCESS | SIZE | AREA |
| D11-1 | BIKE ROUTE | REV. SCREEN | 24" x 18" | 3.0 Sq. Ft. |
| D3-1 | BIKE ROUTE NAME PLAQUE | REV. SCREEN | 24" x 6" | 1.0 Sq. Ft. |
| M4-11 | "BEGIN" PLAQUE | REV. SCREEN | 12" x 4" | 0.33 Sq. Ft. |
| M4-12 | "END" PLAQUE | REV. SCREEN | 12" x 4" | 0.33 Sq. Ft. |
| M4-13 | "TO" PLAQUE | REV. SCREEN | 12" x 4" | 0.33 Sq. Ft. |
| M7-1R | RIGHT ARROW PLAQUE | REV. SCREEN | 12" x 9" | 0.75 Sq. Ft. |
| M7-1L | LEFT ARROW PLAQUE | REV. SCREEN | 12" x 9" | 0.75 Sq. Ft. |
| M7-2 | UP (STRAIGHT) ARROW PLAQUE | REV. SCREEN | 12" x 9" | 0.75 Sq. Ft. |
| M7-5 | LEFT AND RIGHT ARROW PLAQUE | REV. SCREEN | 12" x 9" | 0.75 Sq. Ft. |
| R3-17 | BIKE LANE | REV. SCREEN | 30" x 24" | 5.0 Sq. Ft. |
| R3-17A | "AHEAD" PLAQUE | REV. SCREEN | 30" x 12" | 2.5 Sq. Ft. |
| R3-17B | "ENDS" PLAQUE | REV. SCREEN | 30" x 12" | 2.5 Sq. Ft. |
| R4-11 | BICYCLES MAY USE FULL LANE | REV. SCREEN | 30" x 30" | 6.25 Sq. Ft. |
| R10-15R | TURNING VEHICLES YIELD TO BIKES | REV. SCREEN | 30" x 30" | 6.25 Sq. Ft. |
| R10-15L | TURNING VEHICLES YIELD TO BIKES | REV. SCREEN | 30" x 30" | 6.25 Sq. Ft. |
| W11-1 | BICYCLE WARNING | REV. SCREEN | 24" x 24" | 4.0 Sq. Ft. |
| W16-9P | "AHEAD" PLAQUE | REV. SCREEN | 24" x 12" | 2.0 Sq. Ft. |

NOTES:

- IN ALL INSTALLATIONS THE FIRST HOLE ABOVE THE FINISHED GRADE LEVEL IN ALL THREE UNITS MUST BE IN LINE FOR INSERTION OF THE BOLT. ALL BOLTS AND NUTS FOR FASTENING THE SIGNS AND SIGN
- POST ASSEMBLY SHALL COMPLY WITH SECTION 1614 AND ALL WASHERS SHALL COMPLY WITH SECTION 1614 OF THE STANDARD SPECIFICATIONS FOR STATE ROAD AND BRIDGE CONSTRUCTION (1980 EDITION) AND SHALL BE SUBSIDIARY ITEM. ALL LETTER, NUMBER & SYMBOL SIZES, SPACING & COLORS
- AND SIGN COLORS SHALL CONFORM TO THE CURRENT "MANUAL ON UNIFORM TRAFFIC CONTROL DEVICES."
- ALL SIGN MATERIALS TO BE 0.080" ALUMINUM.
- VEHICLE TRAFFIC CONTROL SIGN DIMENSIONS AND MOUNTING HEIGHT SHALL CONFORM TO THE CURRENT "MUTCD".

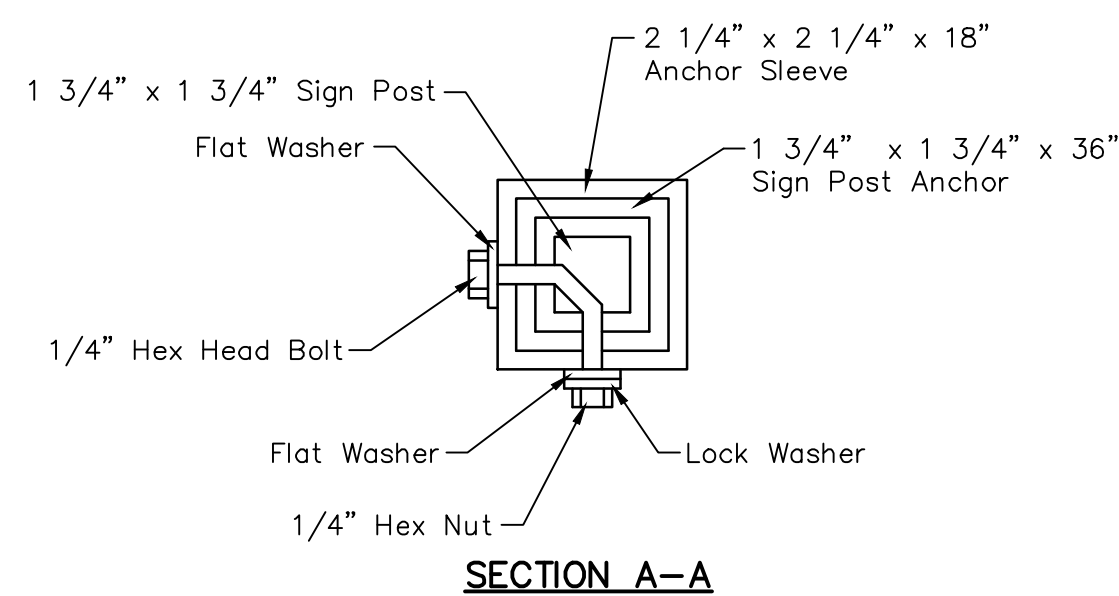


PAVEMENT INSTALLATION SEQUENCE

- SIGN POST ANCHOR DRIVEN INTO SUBGRADE PRIOR TO THE PLACEMENT OF THE PAVEMENT.
- ANCHOR SLEEVE DRIVEN INTO SUBGRADE OVER THE SIGN POST ANCHOR PRIOR TO THE PLACEMENT OF THE PAVEMENT
- INSERT SIGN POST INTO THE SIGN POST ANCHOR AND BOLT IN PLACE.

GROUND INSTALLATION SEQUENCE

- SIGN POST ANCHOR DRIVEN INTO GROUND
- ANCHOR SLEEVE DRIVEN INTO THE GROUND OVER THE SIGN POST ANCHOR.
- INSERT SIGN POST INTO THE SIGN POST ANCHOR AND BOLT IN PLACE.



BREAK-AWAY SIGN POST DETAIL

| STATE | PROJECT NO. | YEAR | SHEET NO. | TOTAL SHEETS |
|--------|---------------|------|-----------|--------------|
| KANSAS | 87 TE-0622-01 | 2014 | 13 | 13 |

BIKE LANE SIGNAGE DETAILS AND QTYS.

CITY ENGINEER
GARY JANZEN P.E.

| | | |
|--|----------------------|------------------|
| PROJECT NUMBER 472-85113 | OCA NUMBER 707056 | DATE AUG 2014 |
| CITY ENGINEER'S OFFICE CITY HALL - SEVENTH FLOOR 455 NORTH MAIN STREET WICHITA, KANSAS 67202-1620 (316) 268-4500 (316) 268-4114 FAX | DESIGN BDT | DRAWN BDT |

SHEET
11 of 14