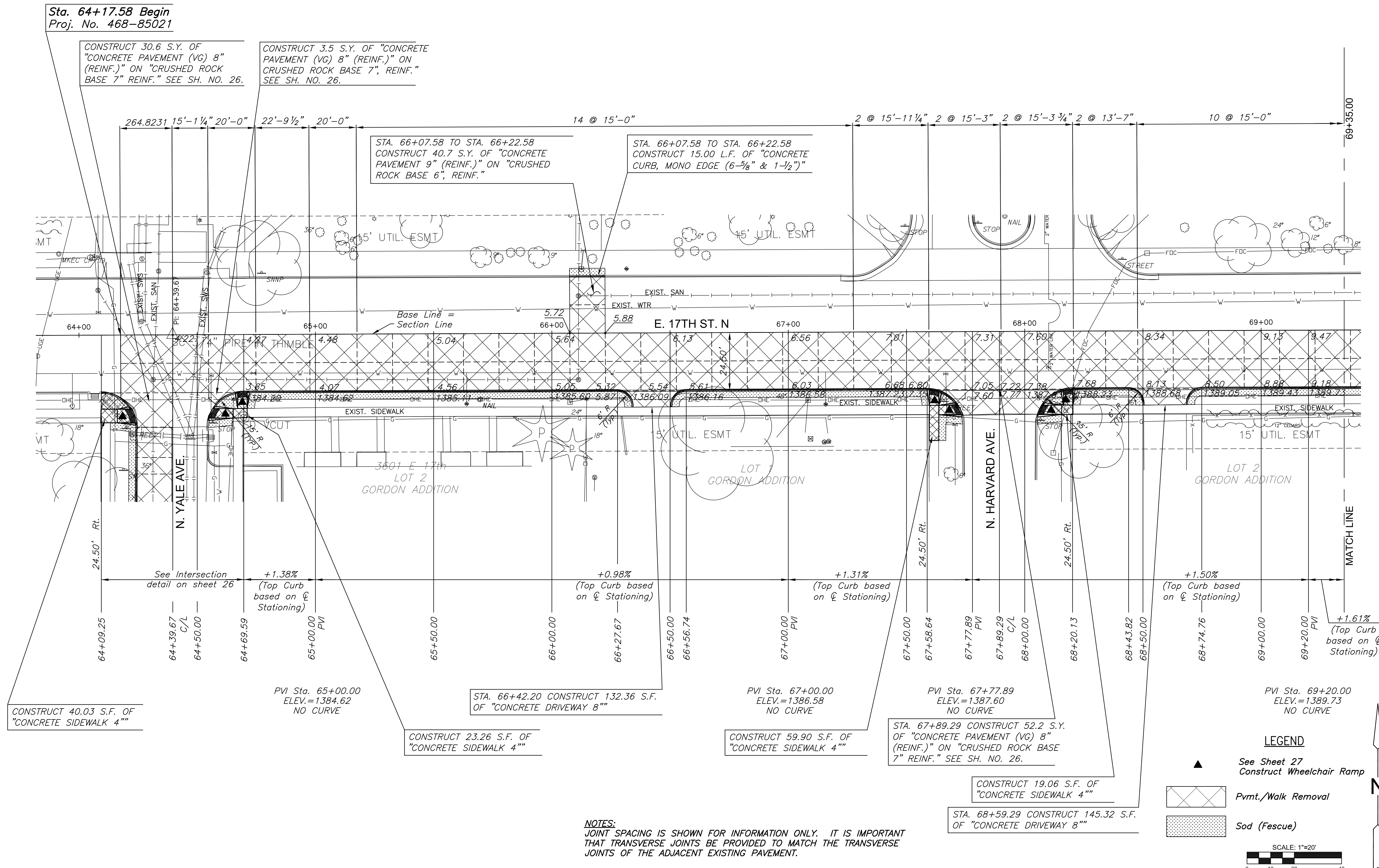


PAVING & INCIDENTAL DRAINAGE FOR  
**17TH STREET SANITARY SEWER**  
 WICHITA, KANSAS



Sta. 64+17.58 Begin  
 Proj. No. 468-85021

CONSTRUCT 30.6 S.Y. OF "CONCRETE PAVEMENT (VG) 8" (REINF.) ON "CRUSHED ROCK BASE 7" REINF." SEE SH. NO. 26.

CONSTRUCT 3.5 S.Y. OF "CONCRETE PAVEMENT (VG) 8" (REINF.) ON "CRUSHED ROCK BASE 7", REINF." SEE SH. NO. 26.

STA. 66+07.58 TO STA. 66+22.58  
 CONSTRUCT 40.7 S.Y. OF "CONCRETE PAVEMENT 9" (REINF.) ON "CRUSHED ROCK BASE 6", REINF."

STA. 66+07.58 TO STA. 66+22.58  
 CONSTRUCT 15.00 L.F. OF "CONCRETE CURB, MONO EDGE (6-5/8" & 1-1/2")"

CONSTRUCT 40.03 S.F. OF "CONCRETE SIDEWALK 4"

PVI Sta. 65+00.00  
 ELEV.=1384.62  
 NO CURVE

CONSTRUCT 23.26 S.F. OF "CONCRETE SIDEWALK 4"

STA. 66+42.20 CONSTRUCT 132.36 S.F. OF "CONCRETE DRIVEWAY 8"

PVI Sta. 67+00.00  
 ELEV.=1386.58  
 NO CURVE

CONSTRUCT 59.90 S.F. OF "CONCRETE SIDEWALK 4"

PVI Sta. 67+77.89  
 ELEV.=1387.60  
 NO CURVE

STA. 67+89.29 CONSTRUCT 52.2 S.Y. OF "CONCRETE PAVEMENT (VG) 8" (REINF.) ON "CRUSHED ROCK BASE 7" REINF." SEE SH. NO. 26.


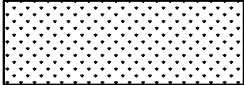
CONSTRUCT 19.06 S.F. OF "CONCRETE SIDEWALK 4"

STA. 68+59.29 CONSTRUCT 145.32 S.F. OF "CONCRETE DRIVEWAY 8"

PVI Sta. 69+20.00  
 ELEV.=1389.73  
 NO CURVE

**NOTES:**  
 JOINT SPACING IS SHOWN FOR INFORMATION ONLY. IT IS IMPORTANT THAT TRANSVERSE JOINTS BE PROVIDED TO MATCH THE TRANSVERSE JOINTS OF THE ADJACENT EXISTING PAVEMENT.

**LEGEND**

- ▲ See Sheet 27 Construct Wheelchair Ramp
-  Pvmnt./Walk Removal
-  Sod (Fescue)



©2015 MKEC Engineering All Rights Reserved  
 www.mkec.com  
 These drawings and their contents, including, but not limited to, all concepts, designs, & ideas are the exclusive property of MKEC Engineering (MKEC), and may not be used or reproduced in any way without the express consent of MKEC.

**PAVING REPLACEMENT & SITE RESTORATION PLANS**

PROJECT NO.	468-85021	
DATE	MARCH 2015	
SCALE	AS SHOWN	
DESIGNED	DRAWN	CHECKED
JRA	LES	JRA
NO.	REVISION	DATE