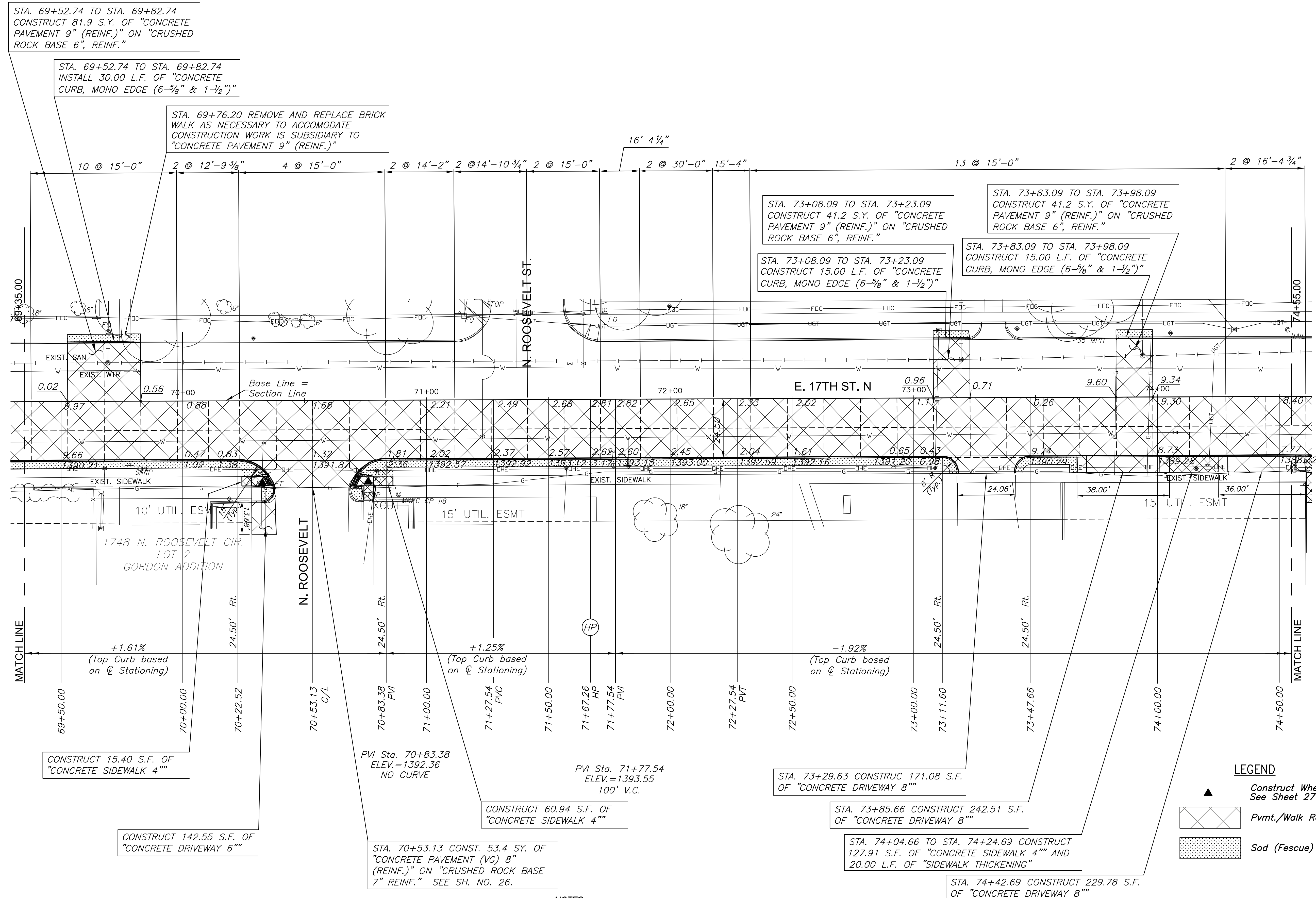


PAVING & INCIDENTAL DRAINAGE FOR  
**17TH STREET SANITARY SEWER**  
 WICHITA, KANSAS



STA. 69+52.74 TO STA. 69+82.74  
 CONSTRUCT 81.9 S.Y. OF "CONCRETE  
 PAVEMENT 9" (REINF.) ON "CRUSHED  
 ROCK BASE 6", REINF."

STA. 69+52.74 TO STA. 69+82.74  
 INSTALL 30.00 L.F. OF "CONCRETE  
 CURB, MONO EDGE (6-5/8" & 1-1/2)"

STA. 69+76.20 REMOVE AND REPLACE BRICK  
 WALK AS NECESSARY TO ACCOMMODATE  
 CONSTRUCTION WORK IS SUBSIDIARY TO  
 "CONCRETE PAVEMENT 9" (REINF.)"

STA. 73+08.09 TO STA. 73+23.09  
 CONSTRUCT 41.2 S.Y. OF "CONCRETE  
 PAVEMENT 9" (REINF.) ON "CRUSHED  
 ROCK BASE 6", REINF."

STA. 73+83.09 TO STA. 73+98.09  
 CONSTRUCT 41.2 S.Y. OF "CONCRETE  
 PAVEMENT 9" (REINF.) ON "CRUSHED  
 ROCK BASE 6", REINF."

STA. 73+83.09 TO STA. 73+98.09  
 CONSTRUCT 15.00 L.F. OF "CONCRETE  
 CURB, MONO EDGE (6-5/8" & 1-1/2)"

STA. 73+08.09 TO STA. 73+23.09  
 CONSTRUCT 15.00 L.F. OF "CONCRETE  
 CURB, MONO EDGE (6-5/8" & 1-1/2)"

CONSTRUCT 15.40 S.F. OF  
 "CONCRETE SIDEWALK 4"

CONSTRUCT 142.55 S.F. OF  
 "CONCRETE DRIVEWAY 6"

PVI Sta. 70+83.38  
 ELEV.=1392.36  
 NO CURVE

CONSTRUCT 60.94 S.F. OF  
 "CONCRETE SIDEWALK 4"

STA. 70+53.13 CONST. 53.4 SY. OF  
 "CONCRETE PAVEMENT (VG) 8"  
 (REINF.) ON "CRUSHED ROCK BASE  
 7" REINF." SEE SH. NO. 26.

PVI Sta. 71+77.54  
 ELEV.=1393.55  
 100' V.C.



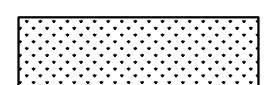
STA. 73+29.63 CONSTRUCT 171.08 S.F.  
 OF "CONCRETE DRIVEWAY 8"

STA. 73+85.66 CONSTRUCT 242.51 S.F.  
 OF "CONCRETE DRIVEWAY 8"

STA. 74+04.66 TO STA. 74+24.69 CONSTRUCT  
 127.91 S.F. OF "CONCRETE SIDEWALK 4" AND  
 20.00 L.F. OF "SIDEWALK THICKENING"

STA. 74+42.69 CONSTRUCT 229.78 S.F.  
 OF "CONCRETE DRIVEWAY 8"

**LEGEND**

-  Construct Wheelchair Ramp  
See Sheet 27
-  Pvmt./Walk Removal
-  Sod (Fescue)

**NOTES:**  
 JOINT SPACING IS SHOWN FOR INFORMATION ONLY. IT IS IMPORTANT  
 THAT TRANSVERSE JOINTS BE PROVIDED TO MATCH THE TRANSVERSE  
 JOINTS OF THE ADJACENT EXISTING PAVEMENT.



©2015  
 MKEC Engineering  
 All Rights Reserved  
 www.mkec.com  
 These drawings and their contents,  
 including, but not limited to, all concepts,  
 designs, & ideas are the exclusive  
 property of MKEC Engineering (MKEC),  
 and may not be used or reproduced in any  
 way without the express consent of MKEC.

**PAVING  
 REPLACEMENT & SITE  
 RESTORATION PLANS**

PROJECT NO.	468-85021	
DATE	MARCH 2015	
SCALE	AS SHOWN	
DESIGNED	DRAWN	CHECKED
JRA	LES	JRA
NO.	REVISION	DATE

J:\PROJECTS\2014\40101073\_COW\_17TH STREET SANITARY SEWER\DWG\1473\_LPR04.DWG