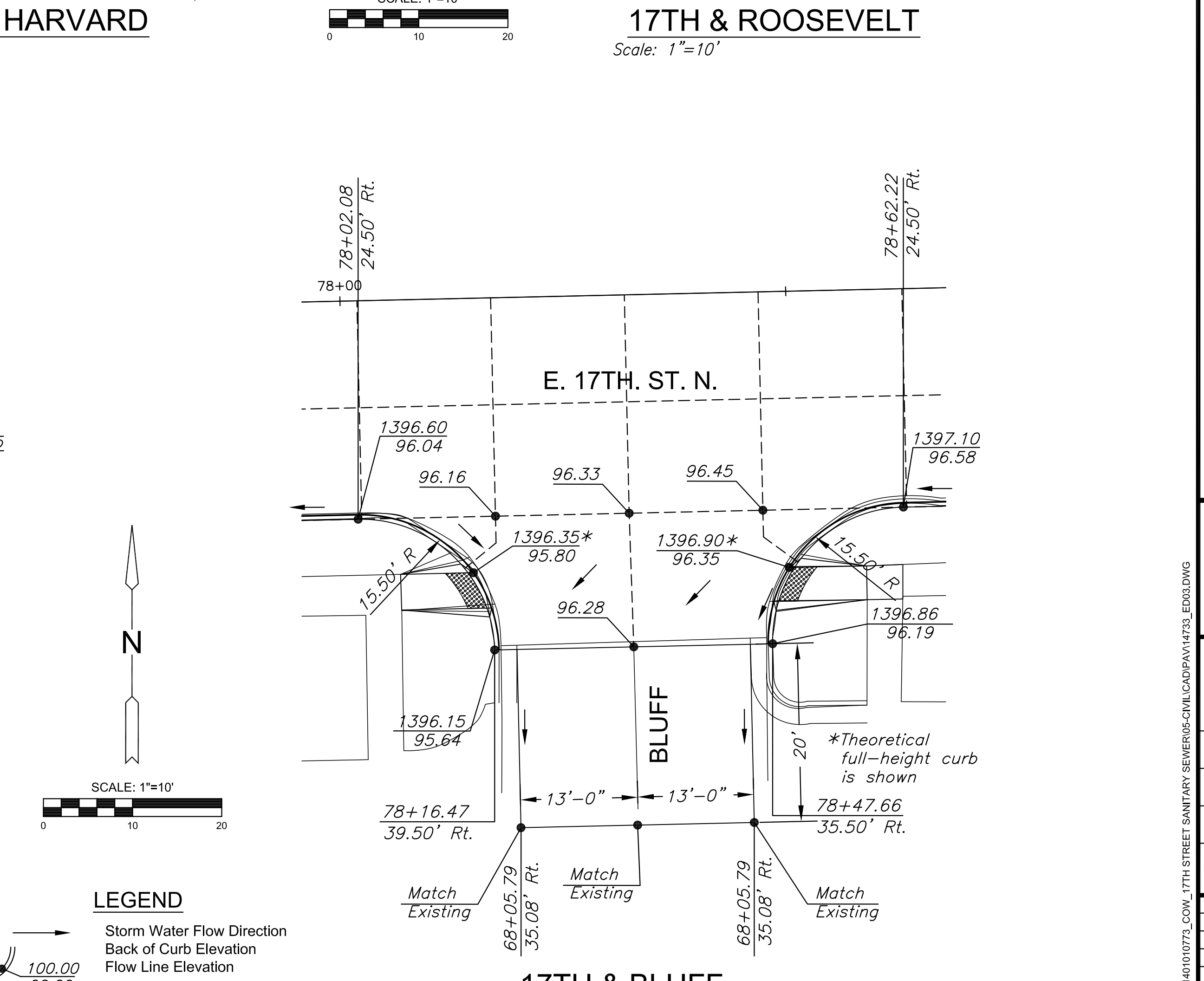
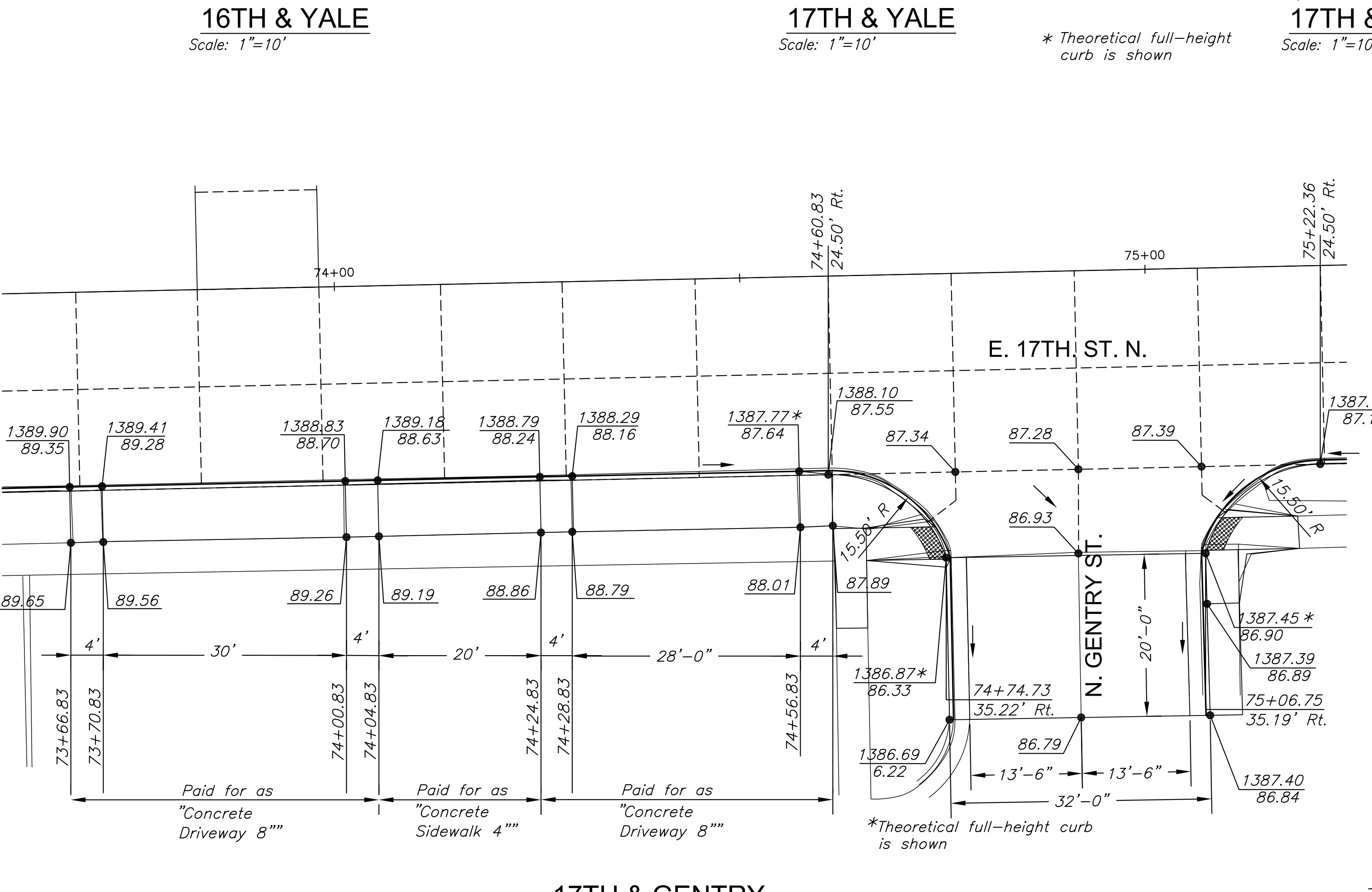
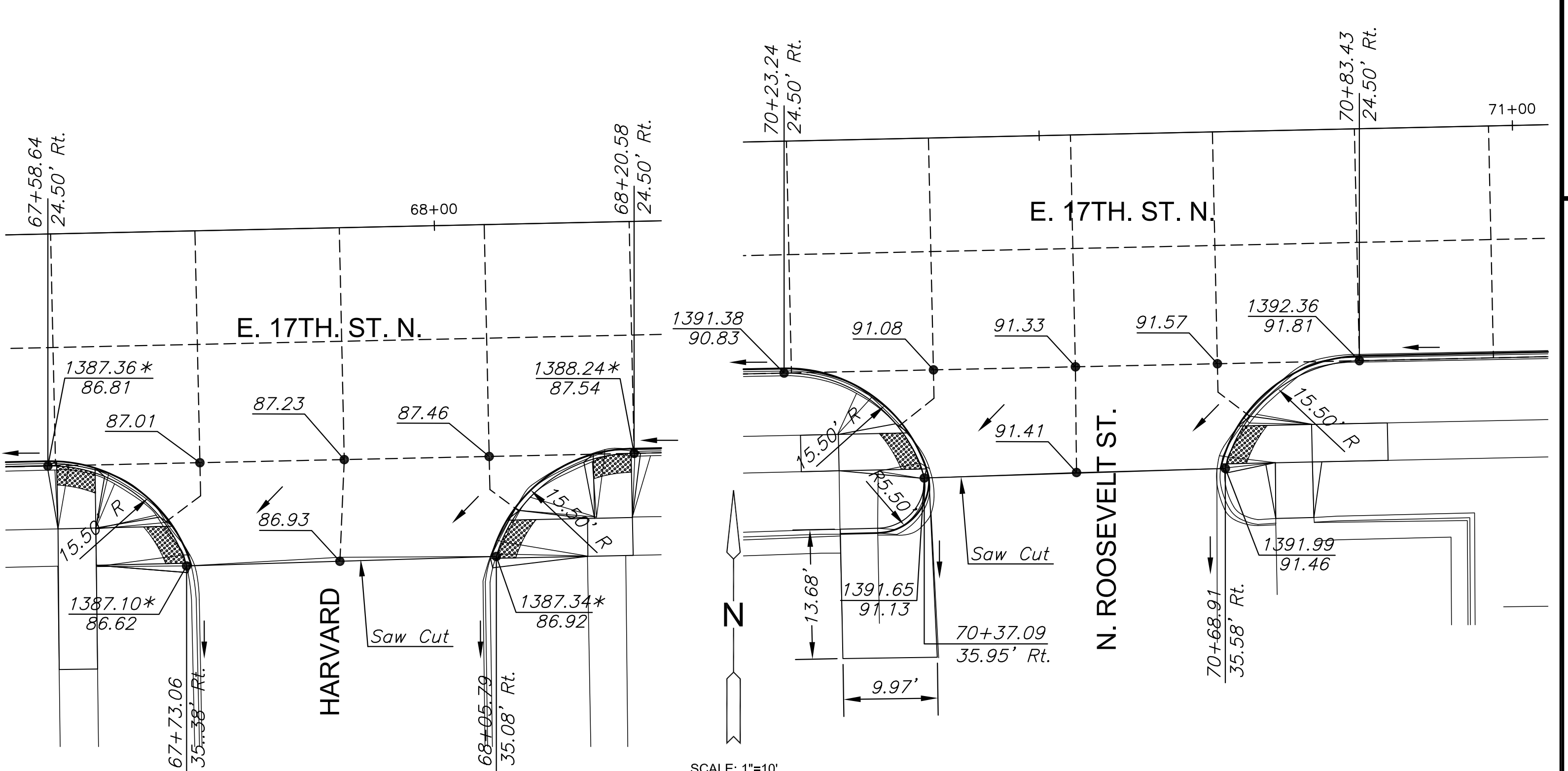
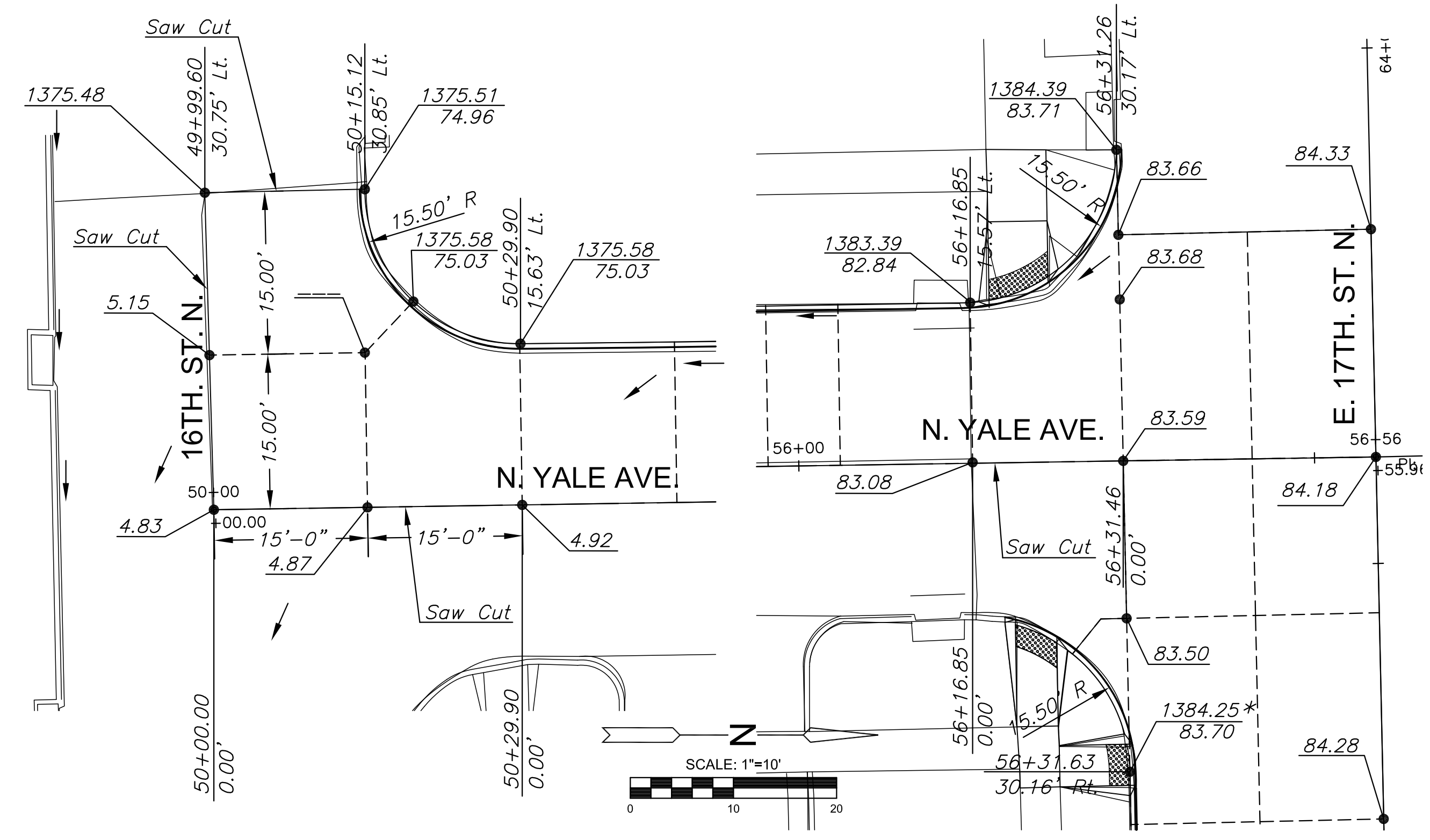


PLOTTED: Tuesday, May 12, 2015 @ 01:28PM



**LEGEND**

- Storm Water Flow Direction
- Back of Curb Elevation
- Flow Line Elevation

Note: All intersection paving, with exception to 16th and Yale, is paid for as "Concrete Pavement (VG) 8" (Reinf.). Please note that valleys across each intersection are not required.

PAVING & INCIDENTAL DRAINAGE FOR  
**17TH STREET SANITARY SEWER**  
WICHITA, KANSAS

©2015 MKEC Engineering All Rights Reserved  
www.mkec.com  
These drawings and their contents, including, but not limited to, all concepts, designs, & ideas are the exclusive property of MKEC Engineering (MKEC), and may not be used or reproduced in any way without the express consent of MKEC.

**INTERSECTION GRADING PLANS**

PROJECT NO.	468-85021	
DATE	MARCH 2015	
SCALE	AS SHOWN	
DESIGNED	DRAWN	CHECKED
JRA	LES	JRA
NO.	REVISION	DATE