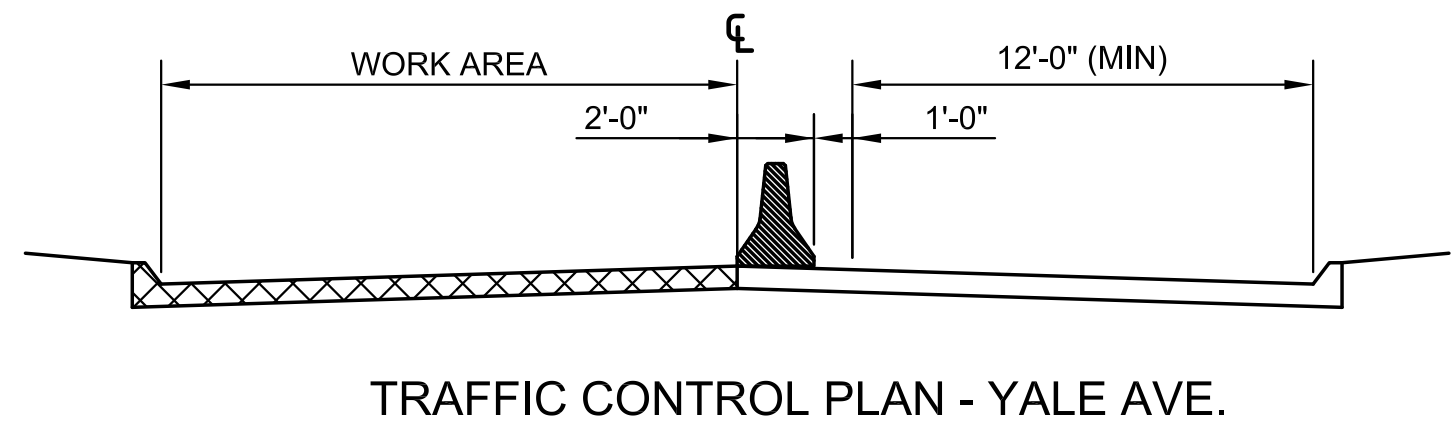
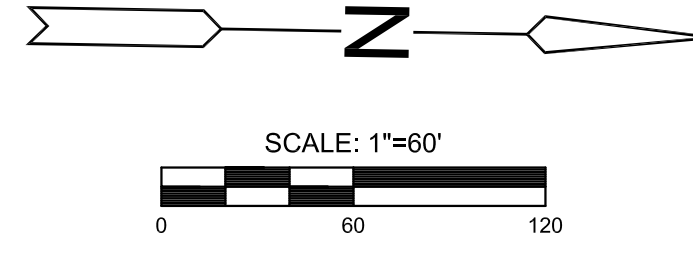
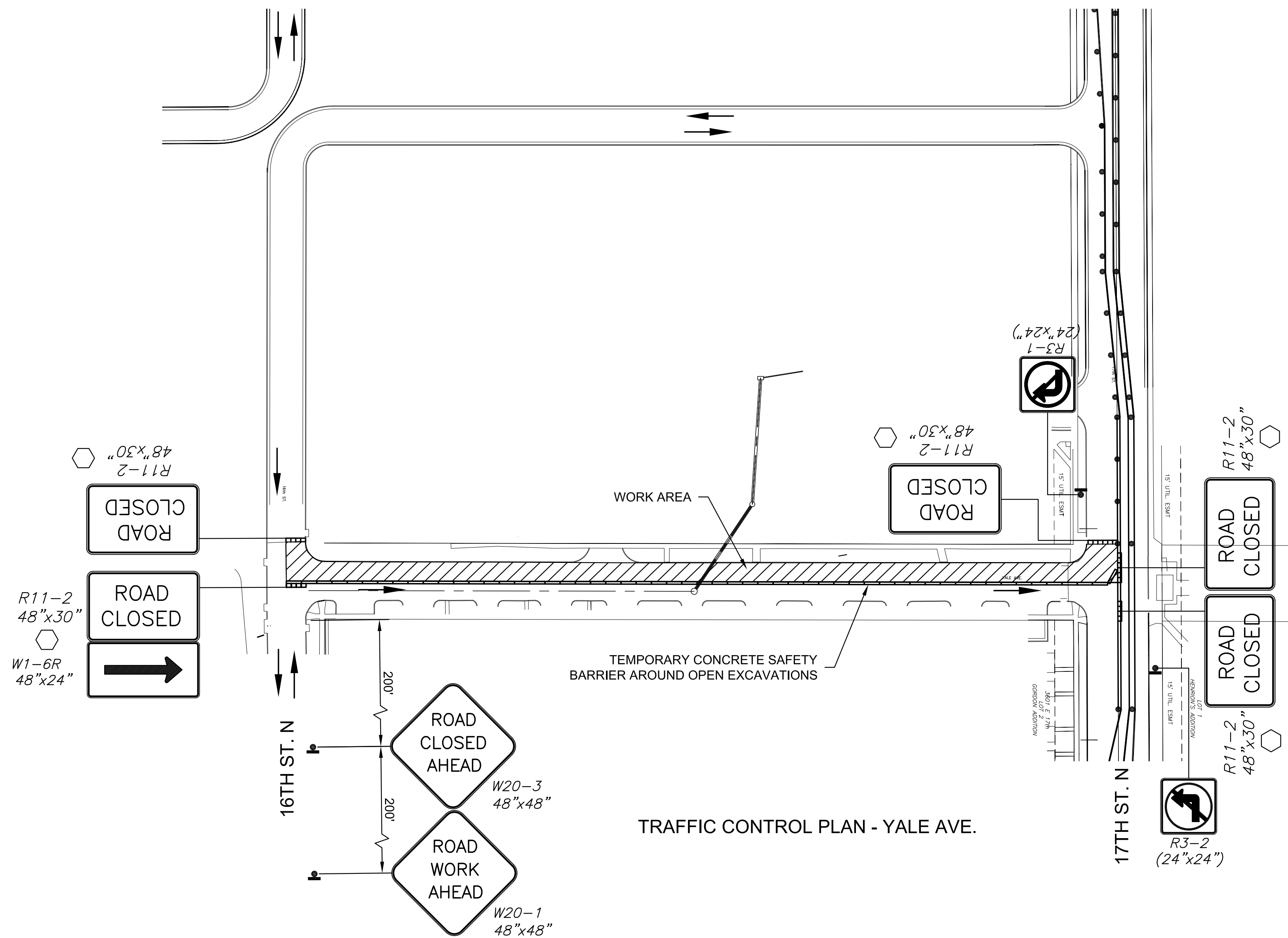


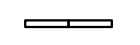


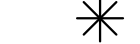


PROJECT TYPE
17TH STREET SANITARY SEWER
WICHITA, KANSAS



- LEGEND**
-  Type III Barricade
 -  Channelizer
 -  Temporary Concrete Safety Barrier pinned to Roadway
 -  Work Area
 -  Traffic Flow
 -  Single Access Point

©2015 MKEC Engineering All Rights Reserved www.mkec.com
These drawings and their contents, including, but not limited to, all concepts, designs, & ideas are the exclusive property of MKEC Engineering (MKEC), and may not be used or reproduced in any way without the express consent of MKEC.

TRAFFIC CONTROL - YALE AVE.

PROJECT NO.	468-85021	
DATE	MARCH 2015	
SCALE	1"=60'	
DESIGNED	DRAWN	CHECKED
JRA	WNJ	JRA

NO.	REVISION	DATE

SHEET NO.