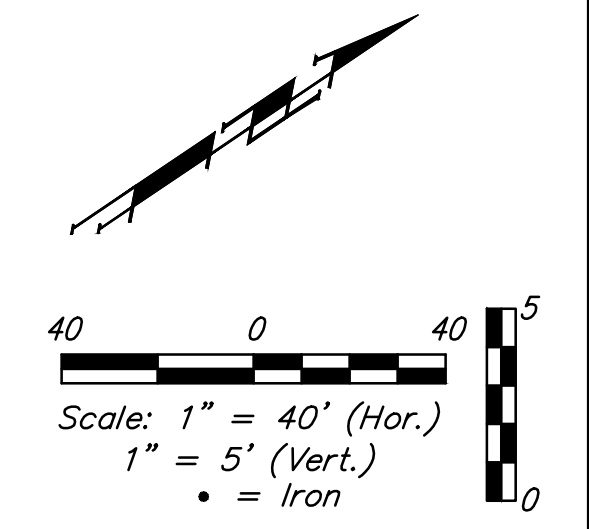
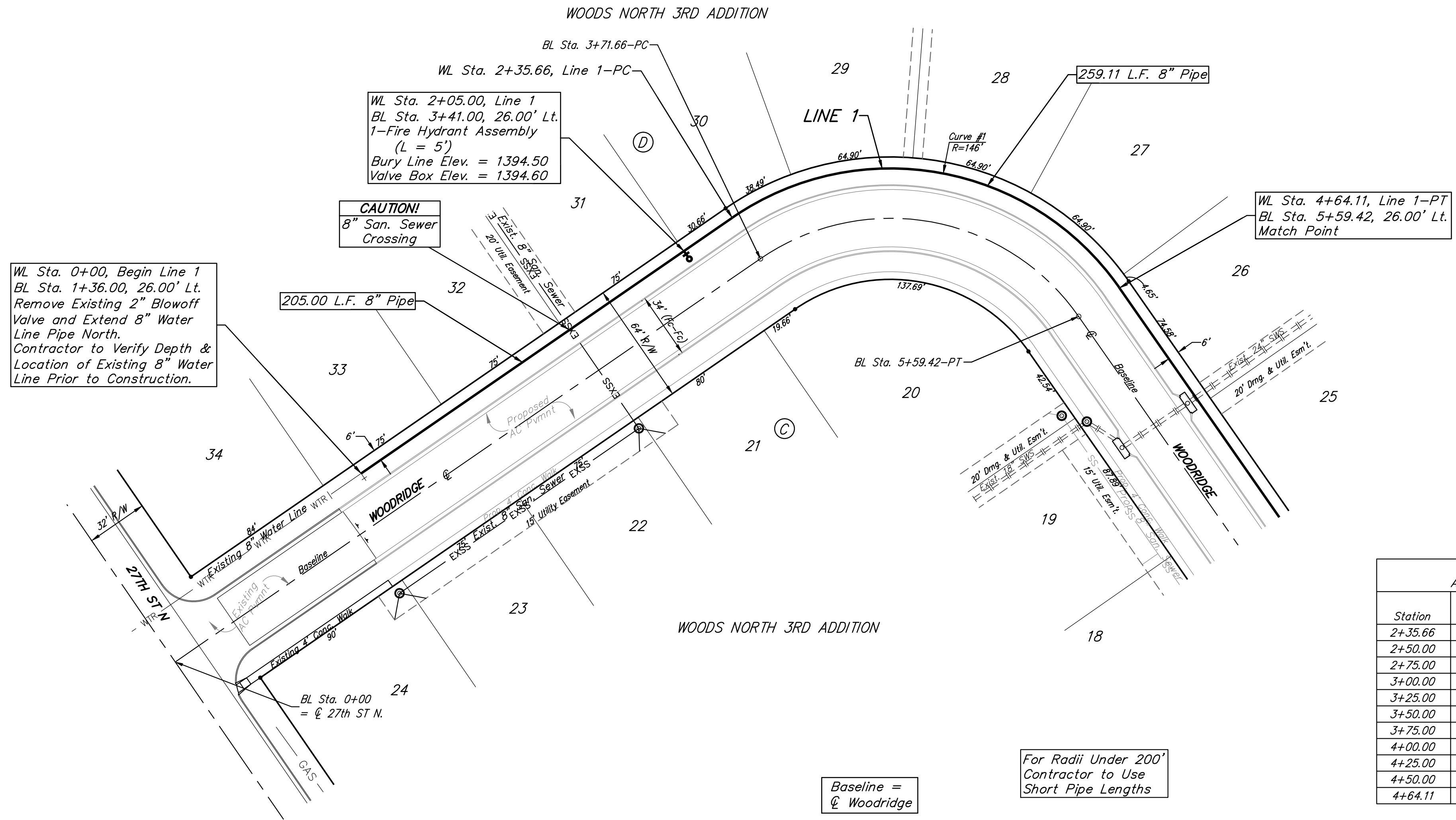


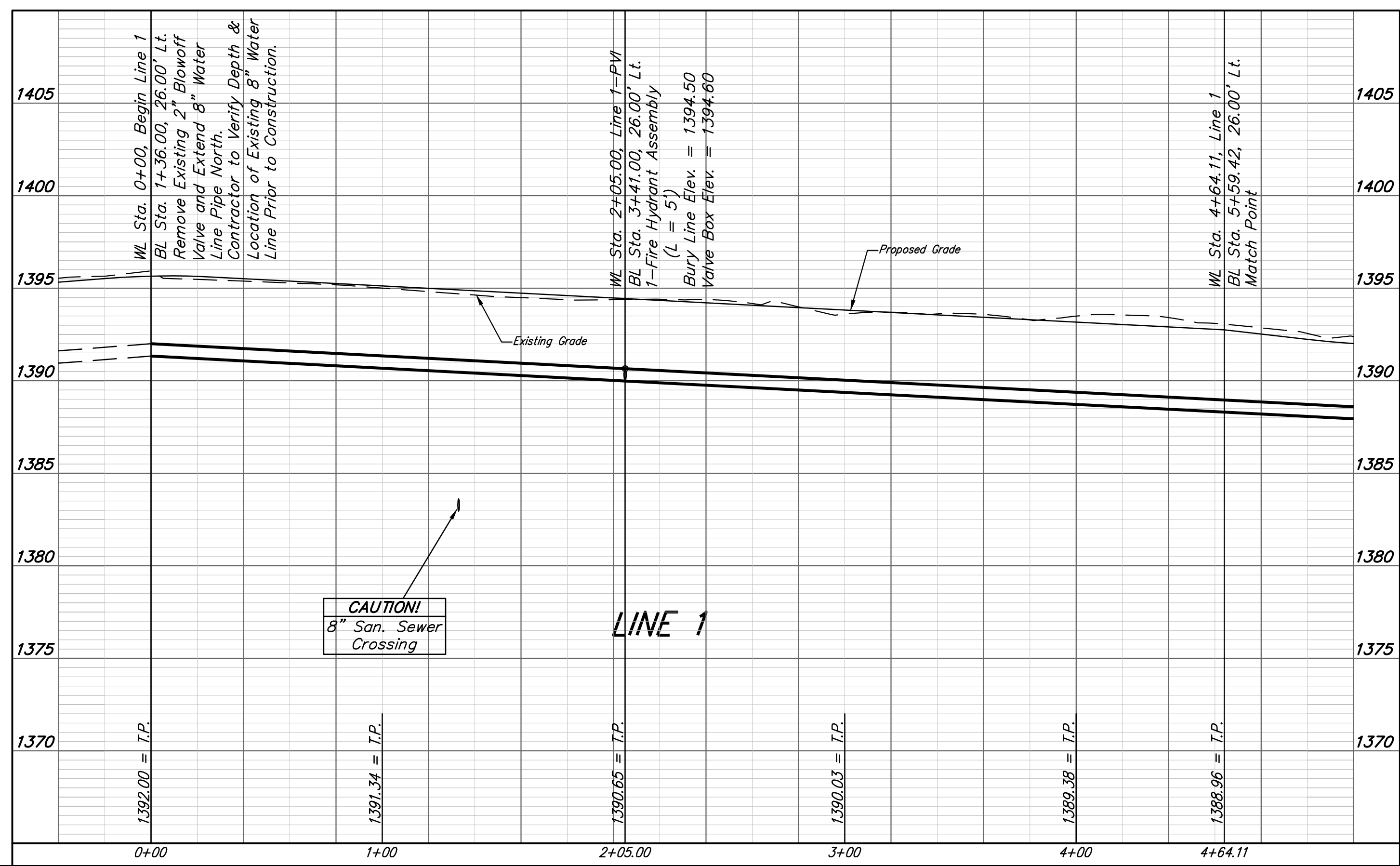
BENCHMARKS:
 BM #1: "□" cut in top of curb near intersection of 27th Street North & Woodridge, south of SE corner of Lot 24, Block C, Woods North 3rd Addition.
 Elev. = 1392.97 NAVD88

BM #2 Brass disc in top of curb adjacent to fire hydrant at the west end of the southwest curb return of 27th St. N. and 27th St. N. Ct.
 Elev. = 1397.59 NAVD88



Curve #1
 Curve Data Based on Centerline
 Rad. = 146' Delta = 89°39'05" Tangent = 145.11'
 Arc = 228.45' L.C. = 205.85' Def./Ft. = 11.77300 Min.

Station	Arc	Face Chord Lengths		Defl.	Total Defl.
		8' Left	8' Right		
2+35.66	-	-	-	0°00'00"	0°00'00"
2+50.00	14.34'	15.12'	13.55'	2°48'49"	2°48'49"
2+75.00	25.00'	26.34'	23.60'	4°54'20"	7°43'09"
3+00.00	25.00'	26.34'	23.60'	4°54'19"	12°37'28"
3+25.00	25.00'	26.34'	23.60'	4°54'20"	17°31'48"
3+50.00	25.00'	26.34'	23.60'	4°54'19"	22°26'07"
3+75.00	25.00'	26.34'	23.60'	4°54'20"	27°20'27"
4+00.00	25.00'	26.34'	23.60'	4°54'19"	32°14'46"
4+25.00	25.00'	26.34'	23.60'	4°54'20"	37°09'06"
4+50.00	25.00'	26.34'	23.60'	4°54'19"	42°03'25"
4+64.11	14.11'	14.88'	13.33'	2°46'07"	44°49'32"



B Baughman
 Woods North 3rd Addition - Phase III
LINE 1
 Water Distribution System

Baughman Company, P.A. 315 Ellis St. Wichita, KS 67211 P 316-262-7271 F 316-262-0149
 ENGINEERING | SURVEYING | PLANNING | LANDSCAPE ARCHITECTURE

PROJECT NUMBER
 448-90556

DESIGN
 AEG

DRAWN
 JAK

APPROVED
 DATE
 6/01/15

REVISIONS:

SCALE
 Noted

SHEET
4 OF 14

E:\Projects\Woods North 3rd_11-12-P847\Engineering\Phase 3\WTR_1503-E226-0407_WTR_PLANS.dwg