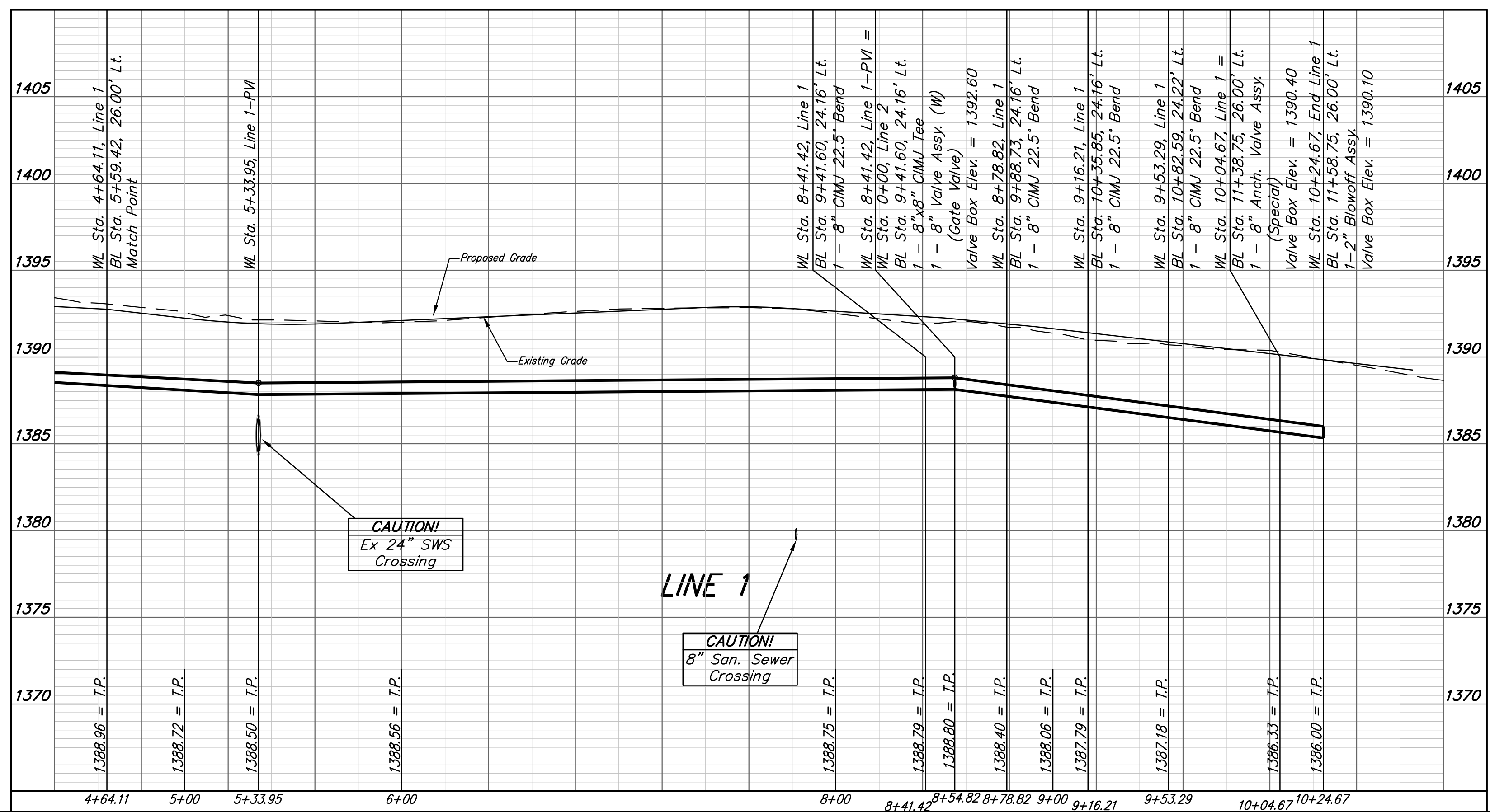
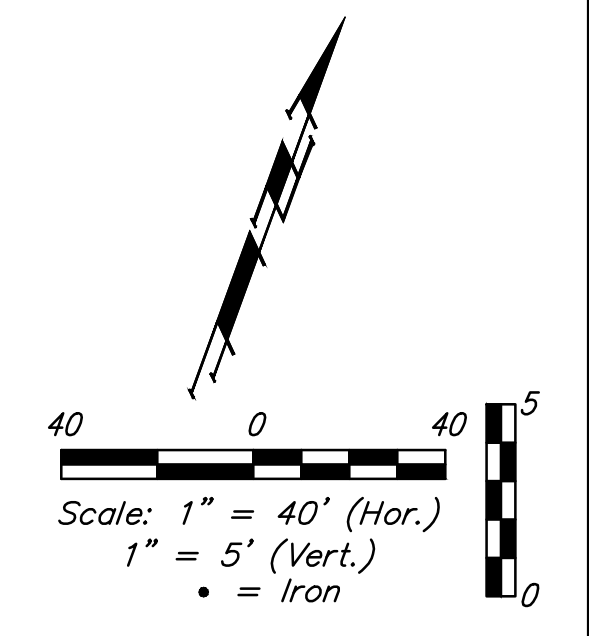
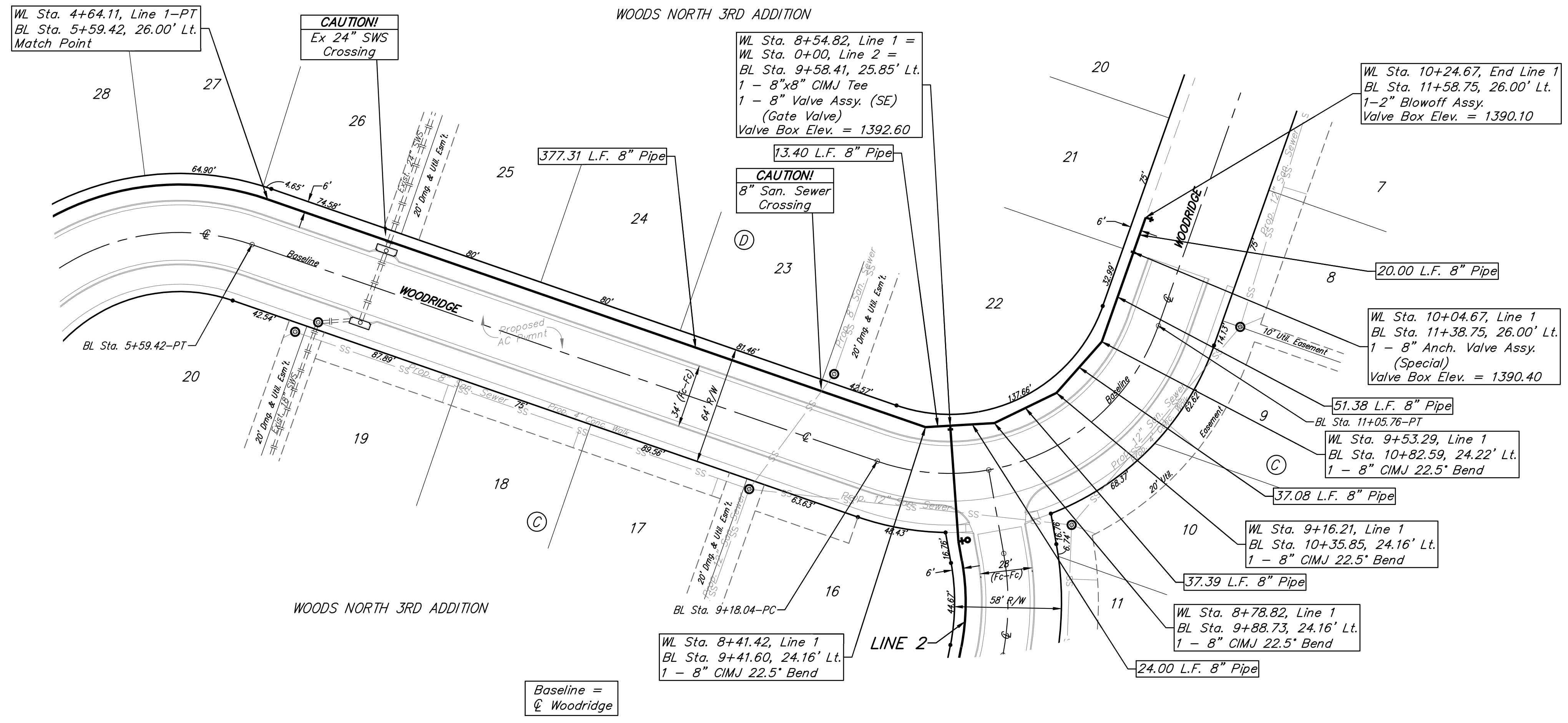


BENCHMARKS:
 BM #1: "□" cut in top of curb near intersection of 27th Street North & Woodridge, south of SE corner of Lot 24, Block C, Woods North 3rd Addition.
 Elev. = 1392.97 NAVD88
 BM #2 Brass disc in top of curb adjacent to fire hydrant at the west end of the southwest curb return of 27th St. N. and 27th St. N. Ct.
 Elev. = 1397.59 NAVD88



		Woods North 3rd Addition - Phase III	
		LINE 1 Water Distribution System	
<small>Baughman Company, P.A. 315 Ellis St. Wichita, KS 67211 P 316-262-7271 F 316-262-0149 ENGINEERING SURVEYING PLANNING LANDSCAPE ARCHITECTURE</small>			
PROJECT NUMBER 448-90556	DESIGN AEG	DRAWN JAK	DATE 6/01/15
REVISIONS:	APPROVED	SCALE Noted	SHEET 5 of 14
<small>E:\Projects\Woods North 3rd, 11-12-P847\Engineering\Phase 3\WTR_1503E226\0407_WTR_PLANS.dwg</small>			