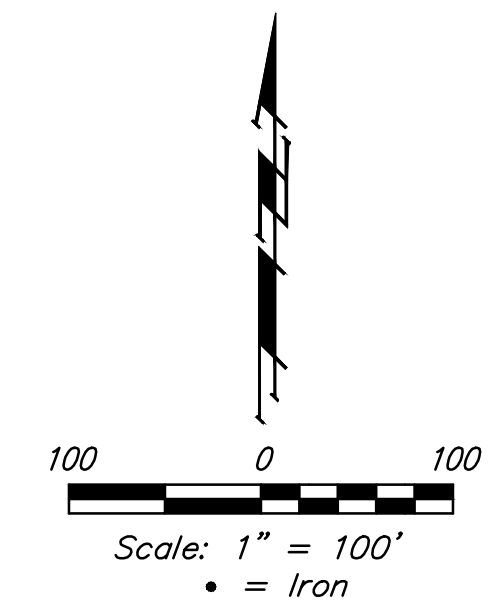
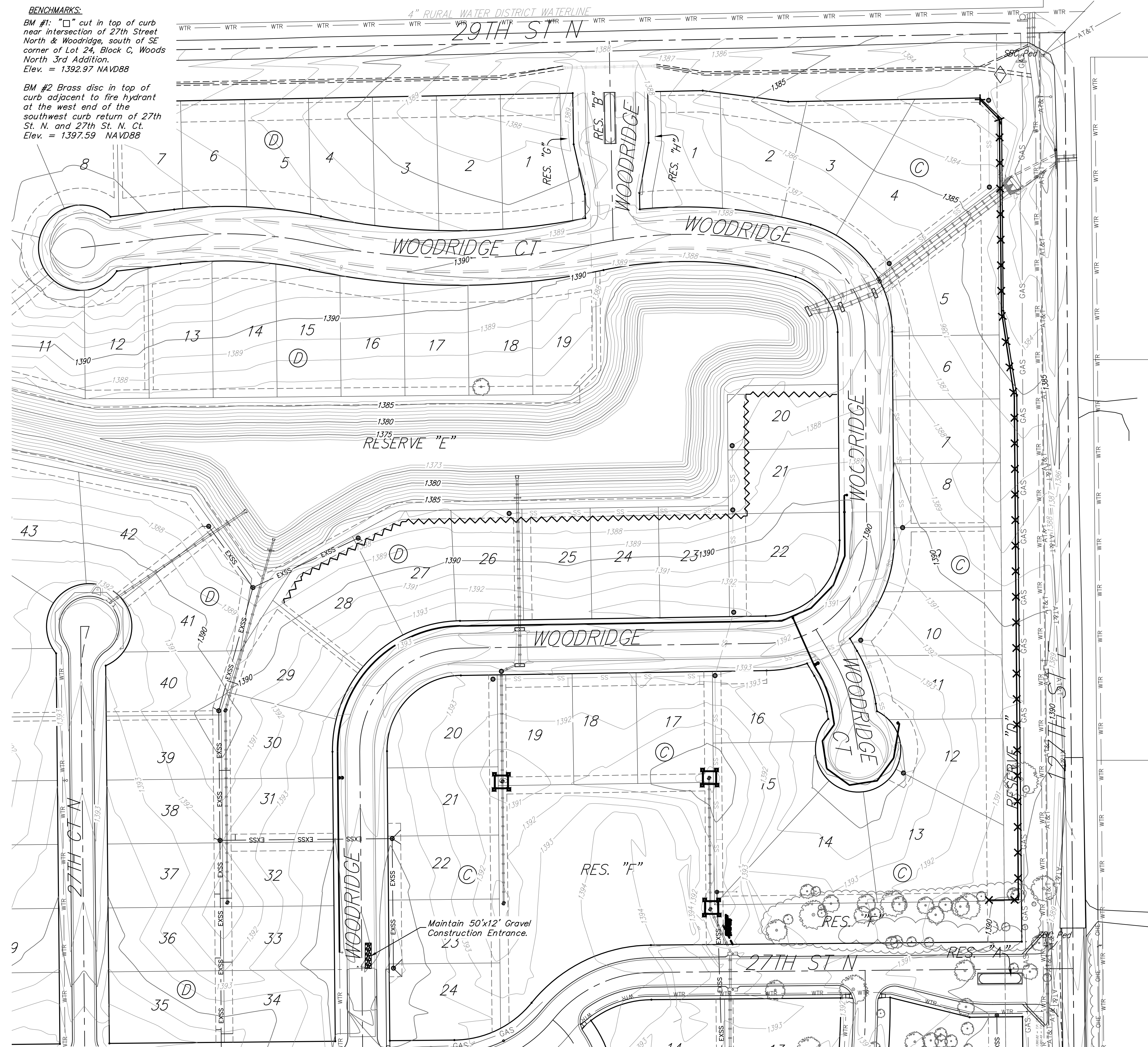


**BENCHMARKS:**

BM #1: "□" cut in top of curb near intersection of 27th Street North & Woodridge, south of SE corner of Lot 24, Block C, Woods North 3rd Addition.  
Elev. = 1392.97 NAVD88

BM #2 Brass disc in top of curb adjacent to fire hydrant at the west end of the southwest curb return of 27th St. N. and 27th St. N. Ct.  
Elev. = 1397.59 NAVD88



Existing Ground — 1364 —

**NOTES:**  
Contractor shall make sure all erosion control is in place before project is accepted. This plan represents the minimum standard. Any additional erosion control measures shall be installed by the Contractor as needed.

All areas disturbed during construction shall be seeded, mulched, and fertilized as per Cover Sheet General Notes.

EROSION CONTROL MEASURE	INSTALL
CUTT-OFF TRENCH (LF)	0
CONSTRUCTION ENTRANCE (EA)	0
CURB INLET BARRIER (EA)	0
DITCH CHECK (EA)	0
DROP INLET PROTECTION (EA)	0
EROSION CONTROL (LS)	0
MULCH WATTLES (LF)	0
SILT FENCE (LF)	0
EROSION CONTROL MAT (SY)	0
MAINTAIN EROSION CONTROL BMP's (LS)	1

\* ALL EXISTING BMPs INCLUDING CONSTRUCTION ENTRANCE, SEDIMENT BARRIERS, SILT FENCE, CUT-OFF TRENCH, AND EROSION CONTROL MAT SHALL BE MAINTAINED AND REPAIRED IF NECESSARY.



	Woods North 3rd Addition - Phase III	
	<b>EROSION CONTROL</b>	
Water Distribution System		
<small>Baughman Company, P.A. 315 Ellis St. Wichita, KS 67211 P 316-262-7271 F 316-262-0149 ENGINEERING   SURVEYING   PLANNING   LANDSCAPE ARCHITECTURE</small>		
PROJECT NUMBER 448-90556	DESIGN AEG	DRAWN JAK
REVISIONS:	APPROVED	DATE 5/15
SCALE Noted		SHEET 7 OF 14