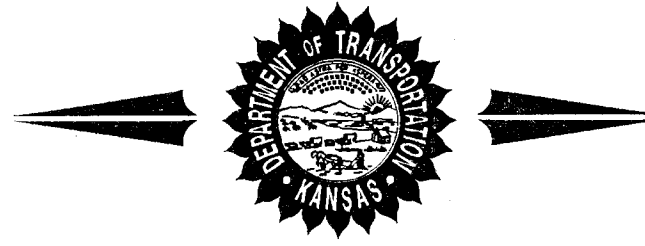


STATE OF KANSAS
DEPARTMENT OF TRANSPORTATION



PLAN AND PROFILE OF PROPOSED
STATE HIGHWAY
SEDGWICK COUNTY
KELLOGG AVENUE (U.S. 54)
CITY OF WICHITA
KELLOGG / OLIVER INTERCHANGE
PHASE I
INDEX # 701896

FHWA REGION NO.	STATE	PROJECT NO.	YEAR	SHEET NO.	TOTAL SHEETS
7	KANSAS	54-87 K-4445-03	1996	1	73

KDOT PROJECT NO. 54-87 K- 4445 -03

- PHASE 1
GRADING
SURFACING
BRIDGES
FENCING
SEEDING

Note: Wherever the Project No. 54-87 K-4445-01 is used within the Phase I Project, it should be construed to mean Project No. 54-87 K-4445-03.

Note: Traffic to be carried through construction, except as shown on the Traffic Control Plans.

INDEX OF SHEETS

- 1 Title Sheet
- 2-3 Typical Sections
- 4 General Notes
- 5 Survey Control Points
- 6-22 Plan and Profile Sheets
- 23-27 Pavement Details
- 28-32A Inlet and Manhole Details
- 33-37 Sanitary Sewer and Water Details
- 38 Schedule of Inlets and Manholes
- 39 Concrete End Sections
- 40-41 Culvert Details
- 42-46 Bridge Sta. 57+50 Pinecrest
- 47 Bridge Excavation
- 48 Supports and Spacers for Reinforcing Steel
- 49-51 Fencing Plans and Fencing Details
- 52-53 Summary of Quantity Sheets
- 54-58 Temporary Project Water Pollution (Soil Erosion)
- 59 Seeding
- 60-68 Traffic Control
- 69 Concrete Safety Barrier (Temporary)
- 70-73 Cross Sections

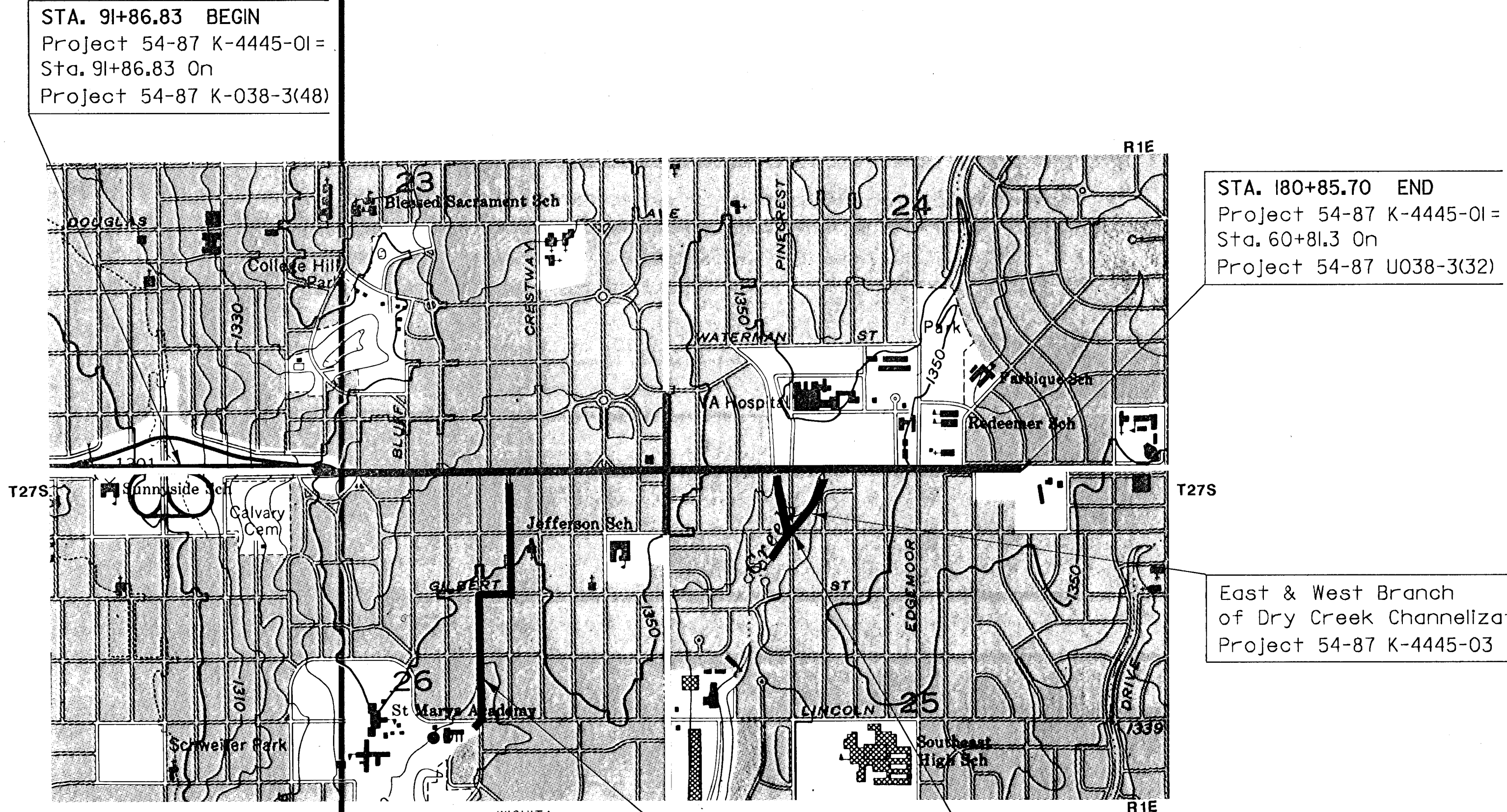
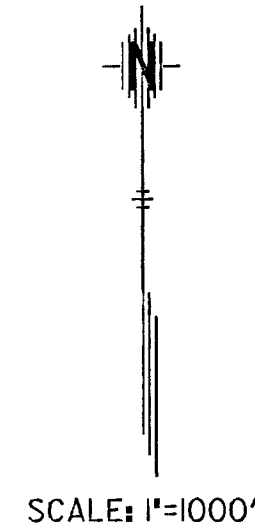
DATE	BY	HNTB/PEC	HNTB	HNTB	HNTB	KDOT
6/96	Richardson/Elliott					
		SURVEYED				
		PLOTTED				
		INKED				
		DESIGNED				
		SQUAD				

DESIGN DESIGNATION

AADT (1995) = 43,100
 AADT (2015) = 86,700
 DHV (2015) = 8%
 D = 55%
 T = 4%
 V = 60 mph
 C of A = Full
 Clear Zone = 30 Ft.

CONVENTIONAL SIGNS

COUNTY LINE	-----	CENTER LINE OF PROJECT	-----
CITY LIMITS	////	TERRACE	-----
STATE OR NATIONAL LINE	-----	CULVERTS	-----
TOWNSHIP, SECTION or GRANT LINE	-----	DROP INLET & STORM SEWER	-----
PROPERTY LINE	-----	ACCESS CONTROL	-----
HIGHWAY FENCE	-----	POWER POLE	-----
EXISTING FENCE	-----	TELEPHONE POLE	-----
GUARD FENCE	-----	MARSH	-----
CONSTRUCTION LIMITS	-----	HEDGE	-----
RIGHT OF WAY LINE	-----	TREES	-----
TRAVELED WAY	-----	PROFILE ELEVATION	-----
RAILROADS	-----	STREAM or CREEK	-----



STA. 91+86.83 BEGIN
 Project 54-87 K-4445-01 =
 Sta. 91+86.83 On
 Project 54-87 K-038-3(48)

STA. 180+85.70 END
 Project 54-87 K-4445-01 =
 Sta. 60+81.3 On
 Project 54-87 U038-3(32)

East & West Branch
 of Dry Creek Channellization
 Project 54-87 K-4445-03

STA. 57+50.28 Pinecrest =
 STA. 11+88 East Branch Dry Creek
 Triple 10' x 6' x 130' Reinforced
 Concrete Box Bridge

Bluff Outfall
 Storm Sewer
 Project 54-87 K-4445-03

GROSS LENGTH OF PROJECT	8,898.87 FT.	1.685 MILES
EXCEPTIONS		
ADDITIONS		
NET LENGTH OF PROJECT	8,898.87 FT.	1.685 MILES
NET LENGTH OF BRIDGES	0 FT.	0 MILES
NET LENGTH OF ROAD	8,898.87 FT.	1.685 MILES

THIS DESIGN SPECIFICALLY PREPARED FOR USE AT THE LOCATION SHOWN. USE IN ANY OTHER MANNER EXCEEDS THE INTENDED PURPOSE OF THESE DRAWINGS AND ANY ACCOMPANYING SPECIFICATIONS.

PREPARED & SUBMITTED BY
HNTB
 HOWARD NEEDLES TAMMEN & BERGENDOFF
 ARCHITECTS ENGINEERS PLANNERS
 OVERLAND PARK, KANSAS

Dale L. McGhee
 DALE L. MCGHEE
 LICENSED PROFESSIONAL ENGINEER
 KANSAS
 7/1/96
 DATE

Michael Lindebar
 MICHAEL LINDEBAR
 CITY ENGINEER
 FOR WICHITA, KANSAS
 7-15-96
 DATE

RECOM. FOR APPROVAL - DATE

 CHIEF, BUREAU OF DESIGN
 KANSAS DEPARTMENT OF TRANSPORTATION

APPROVED - DATE

 STATE TRANSPORTATION ENGINEER
 KANSAS DEPARTMENT OF TRANSPORTATION