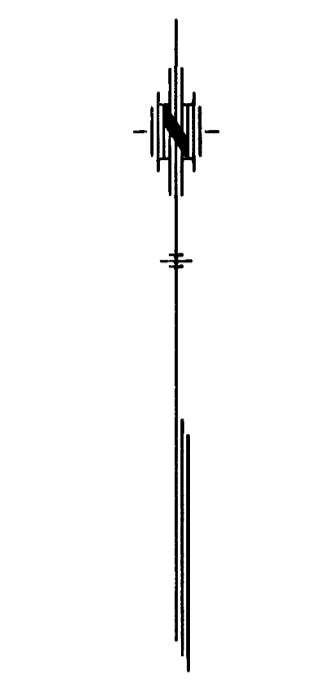


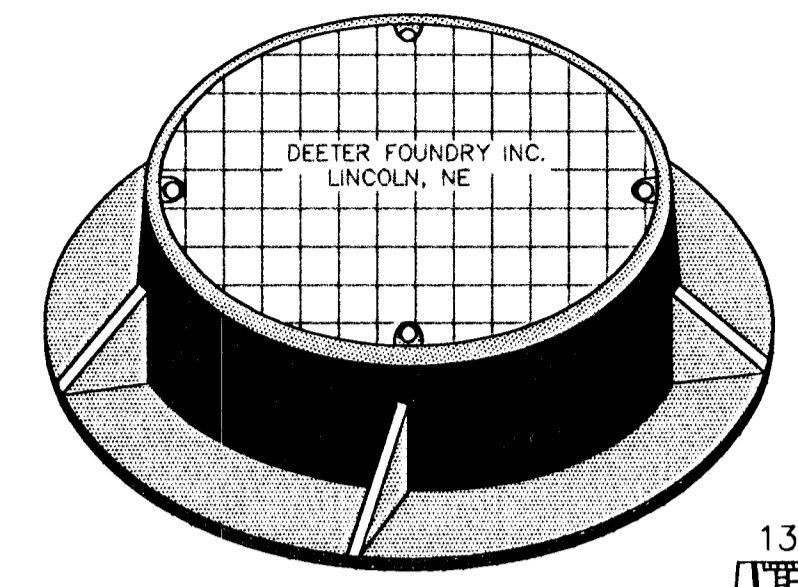
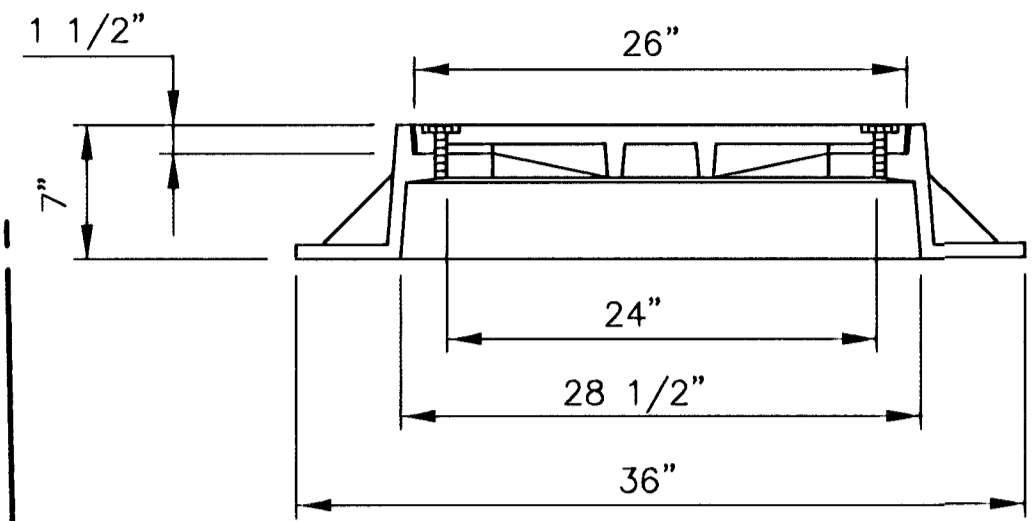
FHWA REG. NO.	STATE	PROJECT NO.	YEAR	SHEET NO.	SHEETS
7	KANSAS	54-87 K-4445-01	1996	7	73

- HEAVY DUTY**
- FURNISHED WITH MACHINED HORIZONTAL BEARING SURFACES.
  - FURNISHED WITH FOUR BRASS HEX HEAD BOLTS AND WASHERS - COUNTERSUNK.
  - FURNISHED STANDARD WITH "O" RING GASKET.

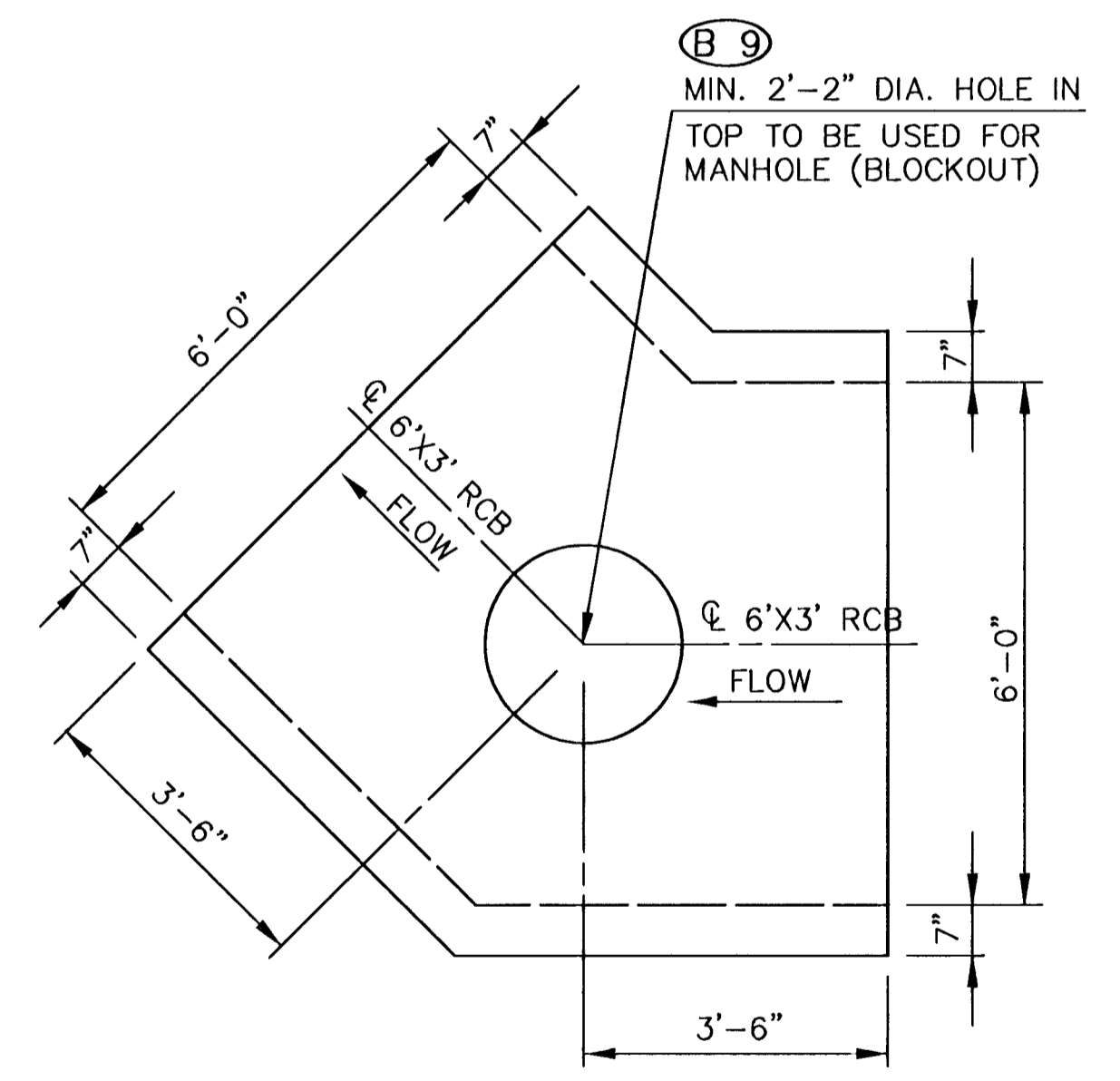
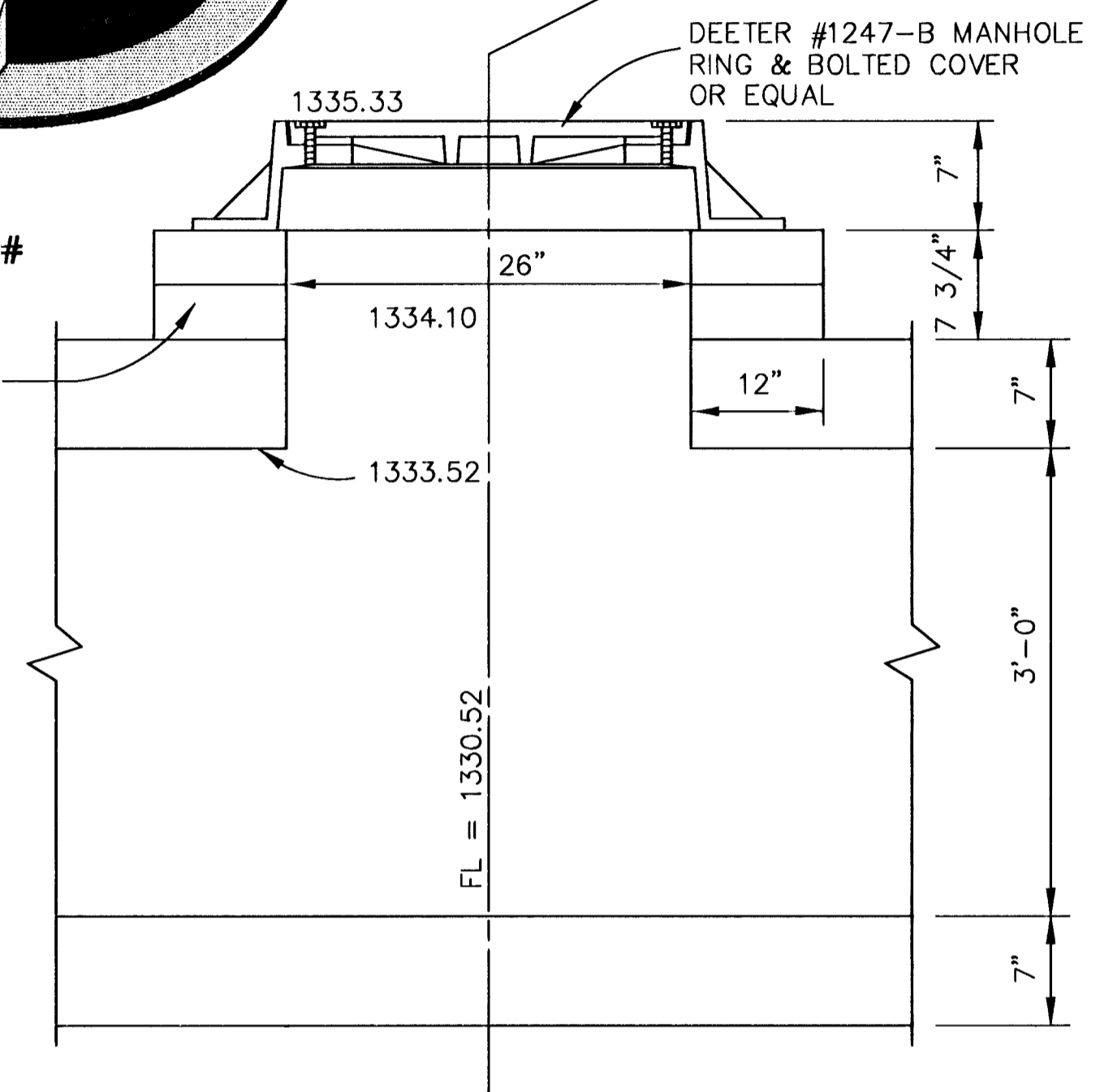


SCALE: 1" = 10'

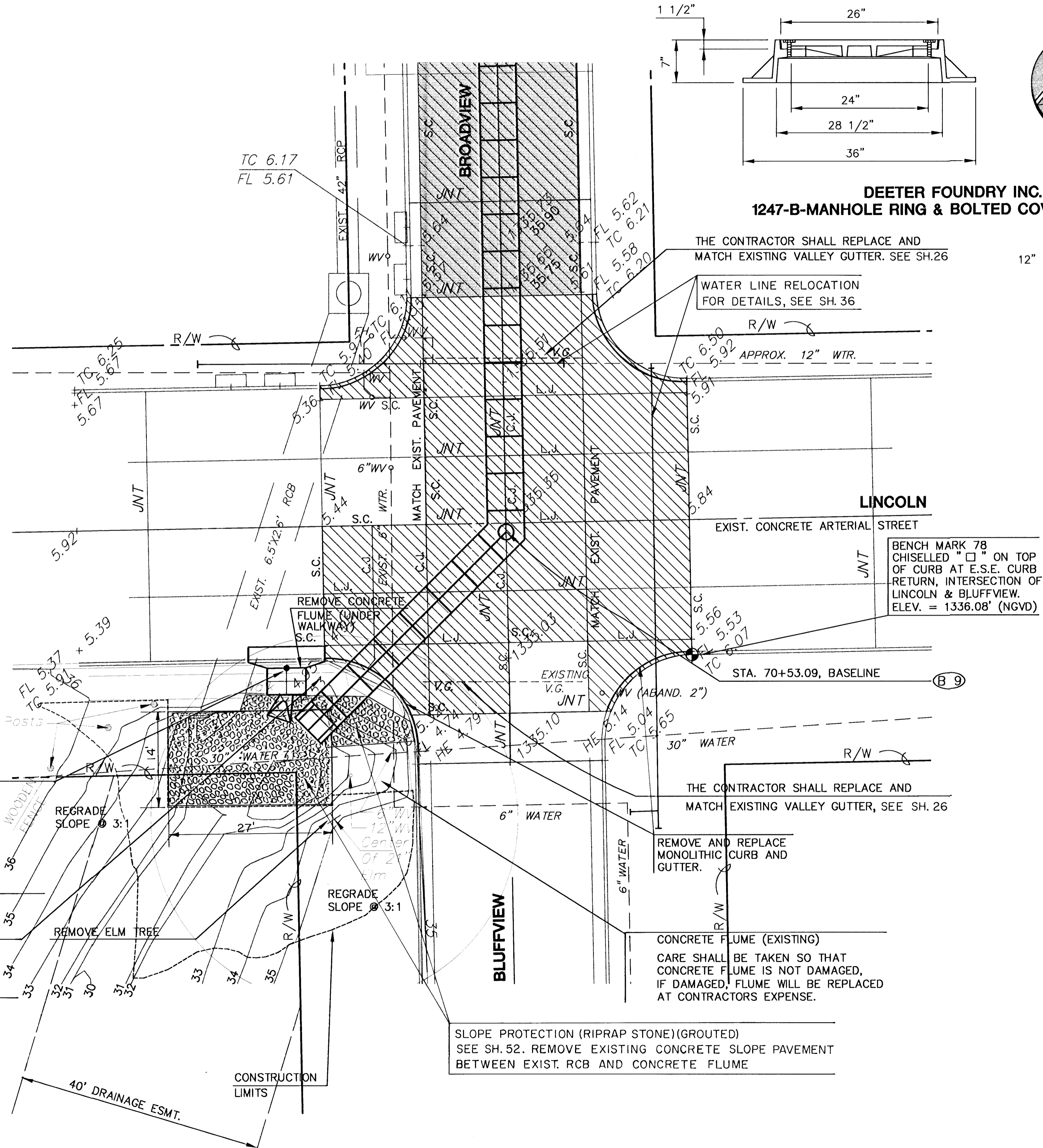
- LEGEND**
- = PAVEMENT TO BE REMOVED
  - S.C. = SAW CUT (FULL DEPTH)
  - V.G. = VALLEY GUTTER
  - = SLOPE PROTECTION (RIPRAP STONE) (GROUTED)
  - = ASPHALTIC CONCRETE PAVEMENT
  - = P.C. CONCRETE PAVEMENT



**DEETER FOUNDRY INC.  
1247-B-MANHOLE RING & BOLTED COVER WT. 385 #**



**SPECIAL 45° BEND - 6'X 3' RCB (PRECAST)**



**(B 10)**  
STA. 70+12.02 BASELINE, 9.69' LT.  
CONST. C.O.W. TYPE 1-A CURB INLET WITH WEST EXTERIOR WALL AGAINST HEADWALL OF EXISTING 6.5' X 2.6' RCB. W = 4'-4", L = 6'-4"  
INLET TOP = MATCH EXISTING TOP OF CURB AND SIDEWALK. USE 1'-24" END SECTION OUT OF BACK CENTER TO DISCHARGE WATER OUT OF INLET @ FL OUT = 1330.30. CONST. C.O.W. INLET HOOK-UP. SEE SH. 28, 39.

REMOVE AND REPLACE SIDEWALK, WHEELCHAIR RAMP AND PIPE RAILING NECESSARY FOR CONSTRUCTION OF CURB INLET AND 6'X3' RCB. SEE SH. 27, 52

SLOPE PROTECTION (RIPRAP STONE)(GROUTED) SEE SH. 52. REMOVE EXISTING CONCRETE SLOPE PAVEMENT BETWEEN EXIST. RCB AND CONCRETE FLUME

THE CONTRACTOR SHALL REPLACE AND MATCH EXISTING VALLEY GUTTER, SEE SH. 26

REMOVE AND REPLACE MONOLITHIC CURB AND GUTTER.

CONCRETE FLUME (EXISTING) CARE SHALL BE TAKEN SO THAT CONCRETE FLUME IS NOT DAMAGED. IF DAMAGED, FLUME WILL BE REPLACED AT CONTRACTORS EXPENSE.

BENCH MARK 78 CHISELLED "X" ON TOP OF CURB AT E.S.E. CURB RETURN, INTERSECTION OF LINCOLN & BLUFFVIEW. ELEV. = 1336.08' (NGVD)

NO.	DATE	REVISIONS	BY	APP'D
3				
2				
1				

**CITY OF WICHITA**

**BLUFF AREA OUTFALL  
LINCOLN & BROADVIEW  
INTERSECTION**

SHEET NO.	OF	SCALE	APP'D
DESIGNED	JNJ	1" = 10'	
DETAIL	JNJ		
QUANTITIES	MKEC		
TRACE	MKEC		