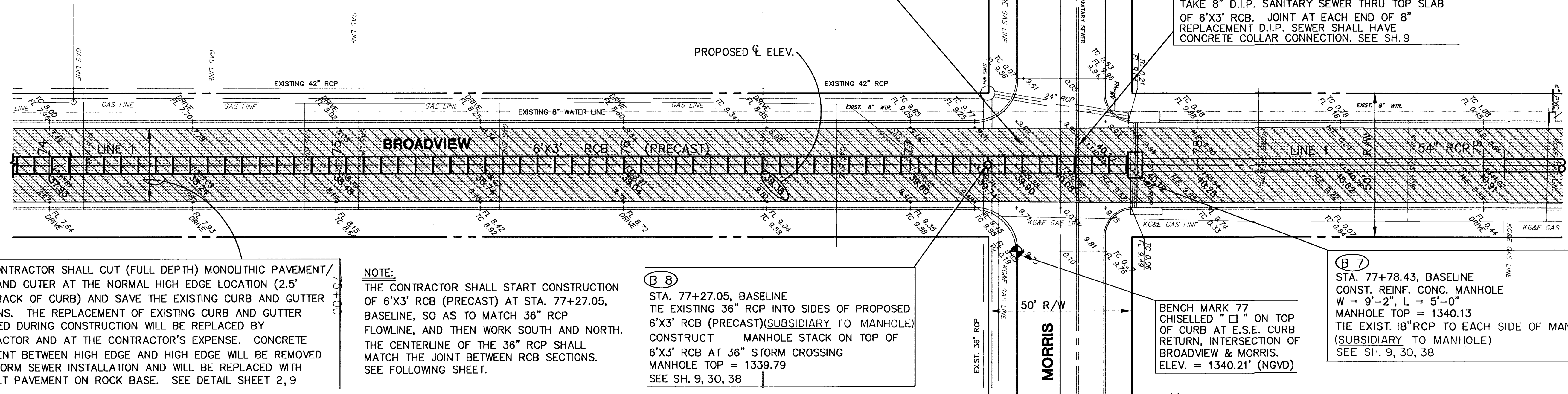


| FHWA REG. NO. | STATE | PROJECT NO. | YEAR | SHEET NO. | SHEETS |
|---------------|--------|-----------------|------|-----------|--------|
| 7 | KANSAS | 54-87 K-4445-01 | 1996 | 8 | 73 |

WATER AND GAS SERVICE LINES WILL BE ADJUSTED BY THE UTILITIES DURING STORM SEWER CONSTRUCTION.

CONTRACTOR SHALL SAW CUT (FULL DEPTH) THROUGH INTERSECTION IN LINE WITH THE NORTH - SOUTH HIGH EDGE LINE ON EACH SIDE OF THE STREET. THE INTERSECTION PAVEMENT SHALL BE REPLACED WITH ASPHALT PAVEMENT ON A ROCK BASE. SEE DETAIL SHEET 2,9

REPLACE 20 L.F. 8" V.C.P. SANITARY SEWER WITH 8" D.I.P. AT SAME ELEVATION AND LOCATION. TAKE 8" D.I.P. SANITARY SEWER THRU TOP SLAB OF 6'X3' RCB. JOINT AT EACH END OF 8" REPLACEMENT D.I.P. SEWER SHALL HAVE CONCRETE COLLAR CONNECTION. SEE SH. 9



SCALE: 1" = 20' HORIZ.
1" = 5' VERT.

LEGEND

- = PAVEMENT TO BE REMOVED
- = ASPHALTIC CONCRETE PAVEMENT
- S.C. = SAW CUT (FULL DEPTH)
- = HORIZONTAL ALIGNMENT CONTROL

THE CONTRACTOR SHALL CUT (FULL DEPTH) MONOLITHIC PAVEMENT/ CURB AND GUTTER AT THE NORMAL HIGH EDGE LOCATION (2.5' FROM BACK OF CURB) AND SAVE THE EXISTING CURB AND GUTTER SECTIONS. THE REPLACEMENT OF EXISTING CURB AND GUTTER DAMAGED DURING CONSTRUCTION WILL BE REPLACED BY CONTRACTOR AND AT THE CONTRACTOR'S EXPENSE. CONCRETE PAVEMENT BETWEEN HIGH EDGE AND HIGH EDGE WILL BE REMOVED FOR STORM SEWER INSTALLATION AND WILL BE REPLACED WITH ASPHALT PAVEMENT ON ROCK BASE. SEE DETAIL SHEET 2,9

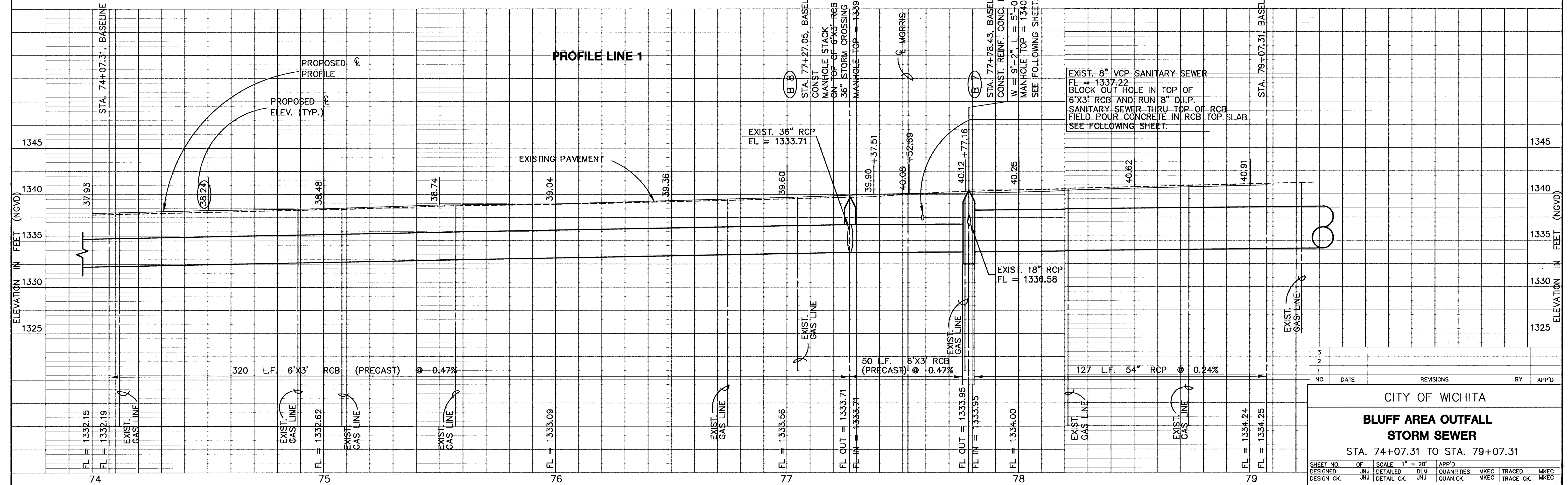
NOTE:
THE CONTRACTOR SHALL START CONSTRUCTION OF 6'X3' RCB (PRECAST) AT STA. 77+27.05, BASELINE, SO AS TO MATCH 36" RCP FLOWLINE, AND THEN WORK SOUTH AND NORTH. THE CENTERLINE OF THE 36" RCP SHALL MATCH THE JOINT BETWEEN RCB SECTIONS. SEE FOLLOWING SHEET.

(B 8)
STA. 77+27.05, BASELINE
TIE EXISTING 36" RCP INTO SIDES OF PROPOSED 6'X3' RCB (PRECAST) (SUBSIDIARY TO MANHOLE) CONSTRUCT MANHOLE STACK ON TOP OF 6'X3' RCB AT 36" STORM CROSSING
MANHOLE TOP = 1339.79
SEE SH. 9, 30, 38

BENCH MARK 77
CHISELLED "X" ON TOP OF CURB AT E.S.E. CURB RETURN, INTERSECTION OF BROADVIEW & MORRIS.
ELEV. = 1340.21' (NGVD)

(B 7)
STA. 77+78.43, BASELINE
CONST. REINF. CONC. MANHOLE
W = 9'-2", L = 5'-0"
MANHOLE TOP = 1340.13
TIE EXIST. 18" RCP TO EACH SIDE OF MANHOLE (SUBSIDIARY TO MANHOLE)
SEE SH. 9, 30, 38

PLAN LINE 1



EXIST. 8" VCP SANITARY SEWER
FL = 1337.22
BLOCK OUT HOLE IN TOP OF 6'X3' RCB AND RUN 8" D.I.P. SANITARY SEWER THRU TOP OF RCB FIELD POUR CONCRETE IN RCB TOP SLAB
SEE FOLLOWING SHEET.

| | | | | | |
|-----|--|------|-----------|----|-------|
| NO. | | DATE | REVISIONS | BY | APP'D |
| 3 | | | | | |
| 2 | | | | | |
| 1 | | | | | |

CITY OF WICHITA
**BLUFF AREA OUTFALL
STORM SEWER**
STA. 74+07.31 TO STA. 79+07.31

| | | | | |
|------------|-----|------------|----------|-------|
| SHEET NO. | OF | SCALE | 1" = 20' | APP'D |
| DESIGNED | JNJ | DETAILED | DJM | |
| DESIGN CK. | JNJ | DETAIL CK. | JNJ | |

| | | | |
|------------|------|-----------|------|
| QUANTITIES | MKEC | TRACED | MKEC |
| QUAN. CK. | MKEC | TRACE CK. | MKEC |