

WATER AND GAS SERVICE LINES WILL BE ADJUSTED BY THE UTILITIES DURING STORM SEWER CONSTRUCTION, UNLESS OTHERWISE NOTED ON PLANS.

CONCRETE PAVEMENT/CURB AND GUTTER WILL BE REMOVED FOR THE STORM SEWER INSTALLATION AND WILL BE REPLACED AT THE INTERSECTION WITH ASPHALT PAVEMENT AND CONCRETE VALLEY GUTTERS RUNNING EAST - WEST ON A ROCK BASE. SEE DETAIL SHEET 2.

FHWA REG. NO.	STATE	PROJECT NO.	YEAR	SHEET NO.	SHEETS
7	KANSAS	54-87 K-4445-01	1996	12	73

(B 6)  
 STA. 84+02.15, BASELINE CONST. REINF. CONC. MANHOLE, CENTERED IN INTERSECTION W = 7'-6", L = 7'-6" MANHOLE TOP = 1343.50 SEE SH. 30

(73)  
 N. 1682185.301  
 E. 1663458.094

BENCH MARK 76 CHISELLED "□" ON TOP OF CURB AT W.N.W. CURB RETURN, INTERSECTION OF BROADVIEW & GILBERT. ELEV. = 1344.22' (NGVD)

CONCRETE PAVEMENT BETWEEN HIGH EDGE AND HIGH EDGE WILL BE REMOVED FOR THE STORM SEWER INSTALLATION AND WILL BE REPLACED AT THE INTERSECTION WITH ASPHALT PAVEMENT AND CONCRETE VALLEY GUTTERS RUNNING NORTH - SOUTH ON A ROCK BASE. SEE DETAIL SHEET 2. THE REPLACEMENT OF EXISTING CURB AND GUTTER DAMAGED DURING CONSTRUCTION WILL BE REPLACED BY CONTRACTOR AND AT THE CONTRACTOR'S EXPENSE.

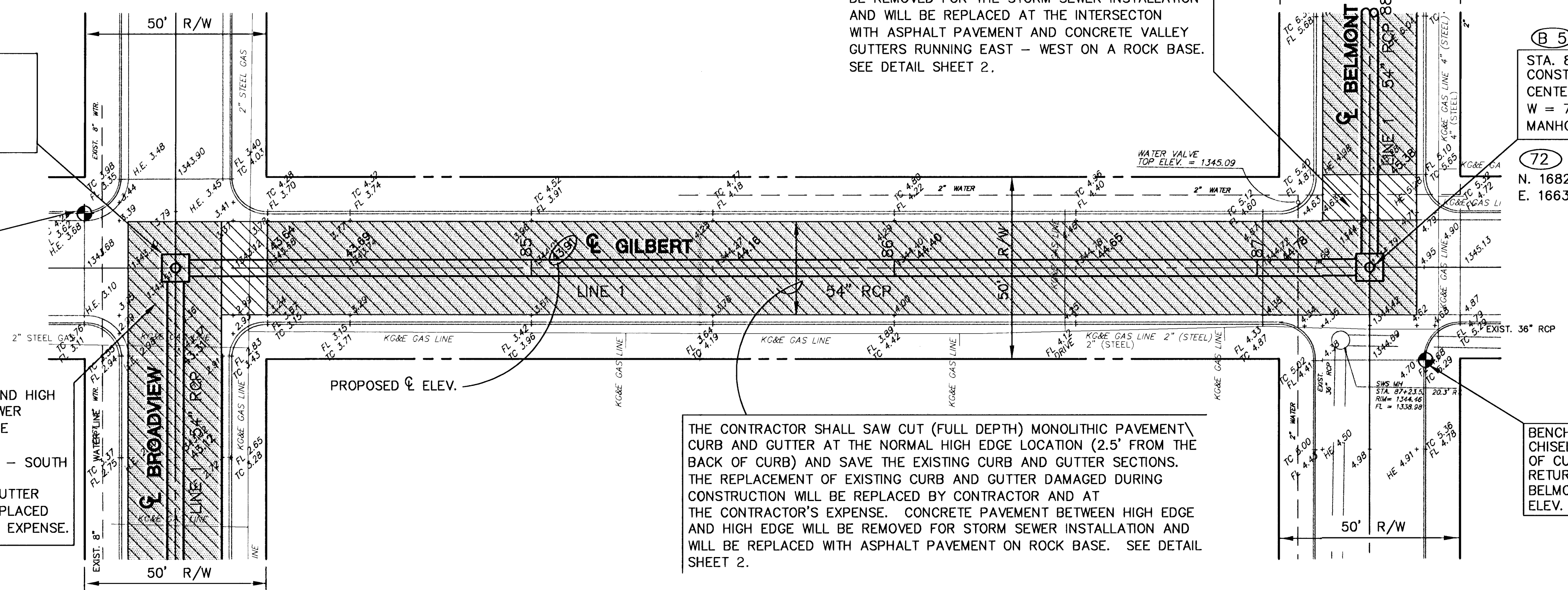
(B 5)  
 STA. 87+30.98, BASELINE CONST. REINF. CONC. MANHOLE, CENTERED IN INTERSECTION W = 7'-6", L = 7'-6" MANHOLE TOP = 1344.78

(72)  
 N. 1682190.576  
 E. 1663786.886

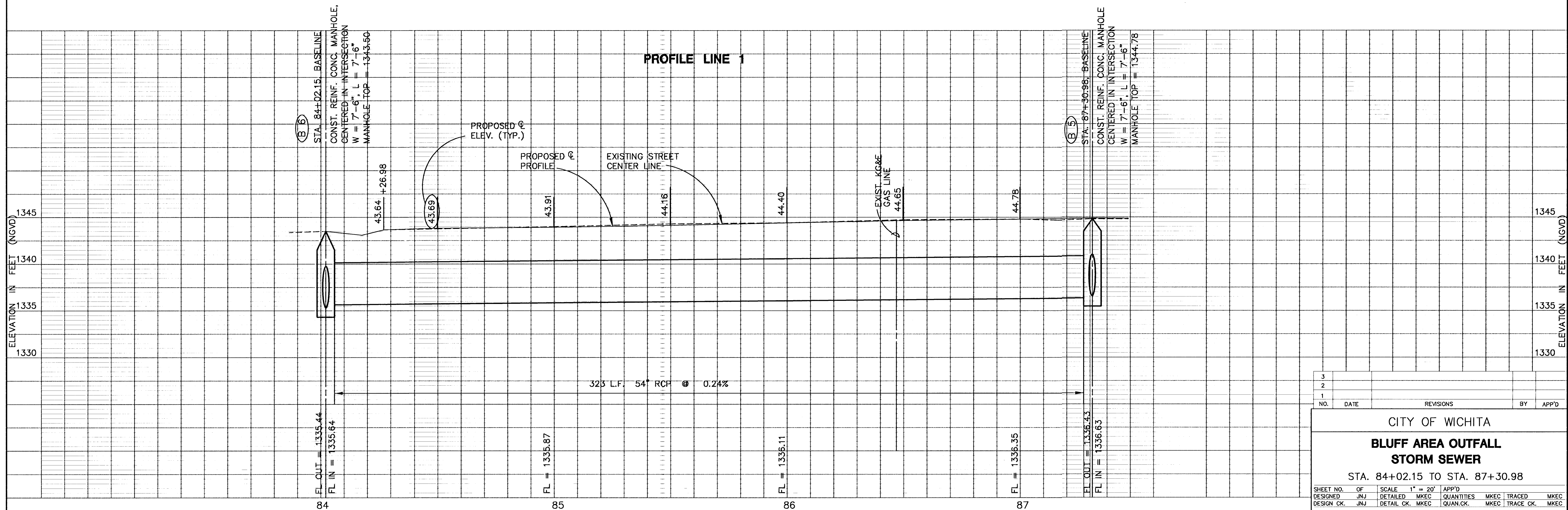
BENCH MARK 75 CHISELLED "□" ON TOP OF CURB AT S.E. CURB RETURN, INTERSECTION OF BELMONT & GILBERT. ELEV. = 1345.33' (NGVD)

SCALE: 1" = 20' HORIZ.  
 1" = 5' VERT.

- LEGEND**
- S.C. = SAW CUT (FULL DEPTH)
  - [Hatched Box] = PAVEMENT TO BE REMOVED
  - [Diagonal Lines Box] = ASPHALTIC CONCRETE PAVEMENT
  - [White Box] = P.C. CONCRETE PAVEMENT
  - (87) = HORIZONTAL ALIGNMENT CONTROL



PLAN LINE 1



NO.	DATE	REVISIONS	BY	APP'D
3				
2				
1				

CITY OF WICHITA  
**BLUFF AREA OUTFALL  
 STORM SEWER**  
 STA. 84+02.15 TO STA. 87+30.98

SHEET NO.	OF	SCALE	1" = 20'	APP'D			
DESIGNED	JNJ	DETAILED	MKEC	QUANTITIES	MKEC	TRACED	MKEC
DESIGN CK.	JNJ	DETAIL CK.	MKEC	QUAN. CK.	MKEC	TRACE CK.	MKEC