

WATER AND GAS SERVICE LINES WILL BE ADJUSTED BY THE UTILITIES DURING STORM SEWER CONSTRUCTION.

FHWA REG NO.	STATE	PROJECT NO.	YEAR	SHEET NO.	SHEETS
7	KANSAS	54-87 K-4445-01	1996	15	73

(B 3)
 STA. 94+13.08, BASELINE
 CONST. REINF. CONC. MANHOLE
 W = 7'-6", L = 7'-6"
 MANHOLE TOP = 1350.38
 N 1682872.4310
 E 1663782.2580

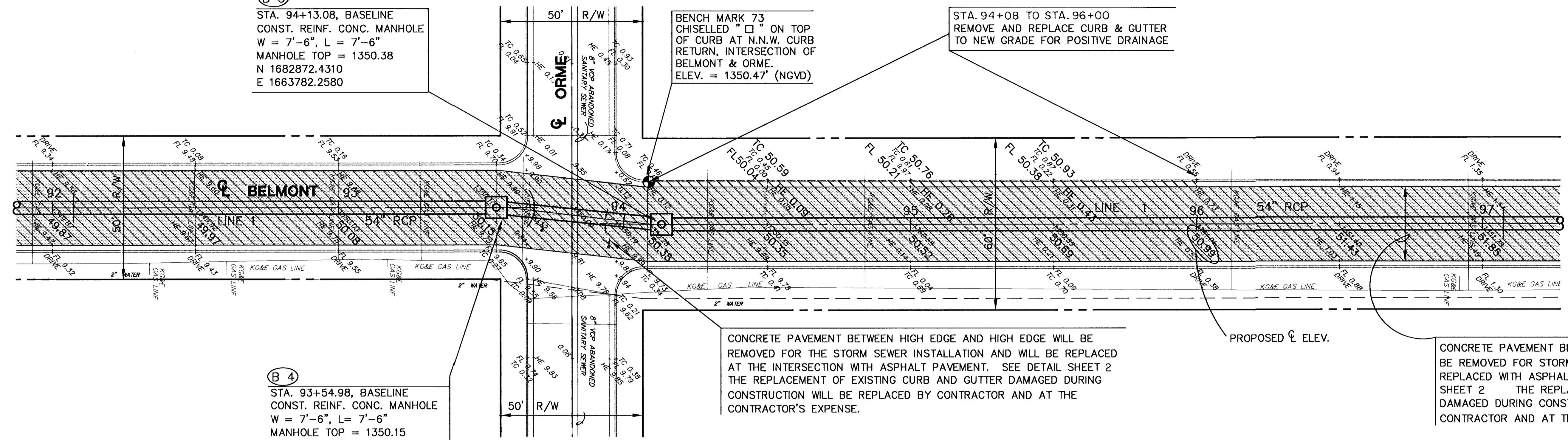
BENCH MARK 73
 CHISELLED "I" ON TOP
 OF CURB AT N.N.W. CURB
 RETURN, INTERSECTION OF
 BELMONT & ORME.
 ELEV. = 1350.47' (NGVD)

STA. 94+08 TO STA. 96+00
 REMOVE AND REPLACE CURB & GUTTER
 TO NEW GRADE FOR POSITIVE DRAINAGE

SCALE: 1" = 20' HORIZ.
 1" = 5' VERT.

LEGEND

- = PAVEMENT TO BE REMOVED
- = ASPHALTIC CONCRETE PAVEMENT
- S.C. = SAW CUT (FULL DEPTH)
- = HORIZONTAL ALIGNMENT CONTROL



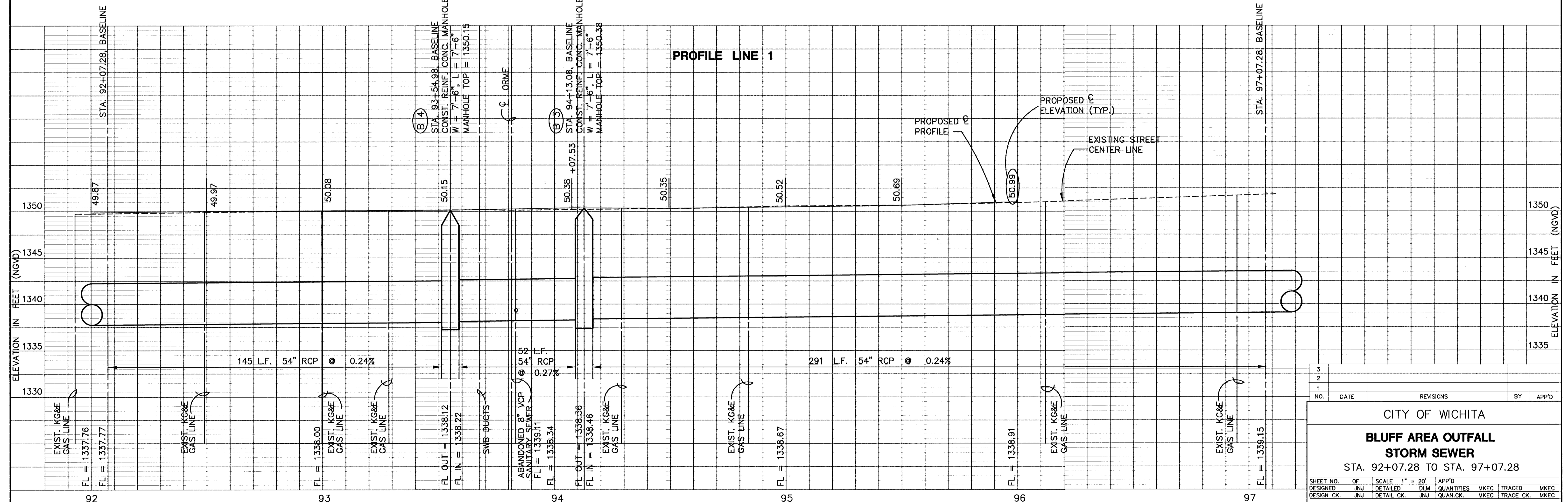
(B 4)
 STA. 93+54.98, BASELINE
 CONST. REINF. CONC. MANHOLE
 W = 7'-6", L = 7'-6"
 MANHOLE TOP = 1350.15
 N 1682814.5170
 E 1663777.2906

CONCRETE PAVEMENT BETWEEN HIGH EDGE AND HIGH EDGE WILL BE REMOVED FOR THE STORM SEWER INSTALLATION AND WILL BE REPLACED AT THE INTERSECTION WITH ASPHALT PAVEMENT. SEE DETAIL SHEET 2 THE REPLACEMENT OF EXISTING CURB AND GUTTER DAMAGED DURING CONSTRUCTION WILL BE REPLACED BY CONTRACTOR AND AT THE CONTRACTOR'S EXPENSE.

CONCRETE PAVEMENT BETWEEN HIGH EDGE AND HIGH EDGE WILL BE REMOVED FOR STORM SEWER INSTALLATION AND WILL BE REPLACED WITH ASPHALT PAVEMENT ON ROCK BASE. SEE DETAIL SHEET 2 THE REPLACEMENT OF EXISTING CURB AND GUTTER DAMAGED DURING CONSTRUCTION WILL BE REPLACED BY CONTRACTOR AND AT THE CONTRACTOR'S EXPENSE.

PLAN LINE 1

PROFILE LINE 1



NO.	DATE	REVISIONS	BY	APP'D
3				
2				
1				

CITY OF WICHITA
**BLUFF AREA OUTFALL
 STORM SEWER**
 STA. 92+07.28 TO STA. 97+07.28

DESIGNED	JNJ	SCALE	1" = 20'	APP'D	
DETAIL	JNJ	DLM	QUANTITIES	MKEC	TRACED
DESIGN	JNJ	QUAN.	MKEC	TRACE	MKEC