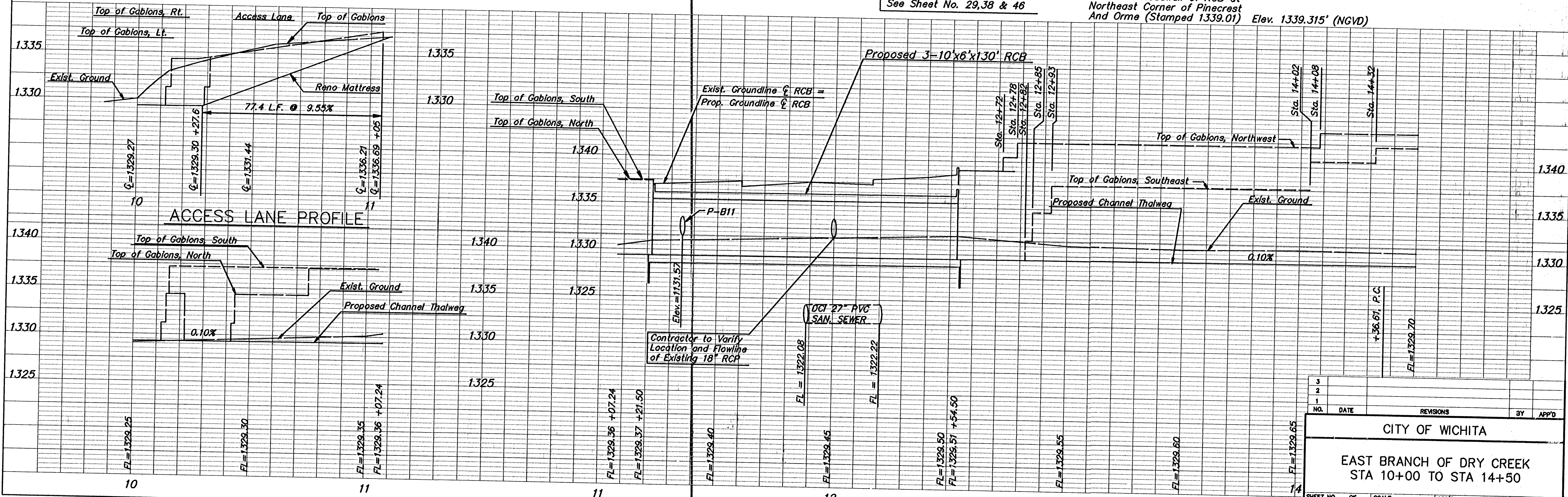
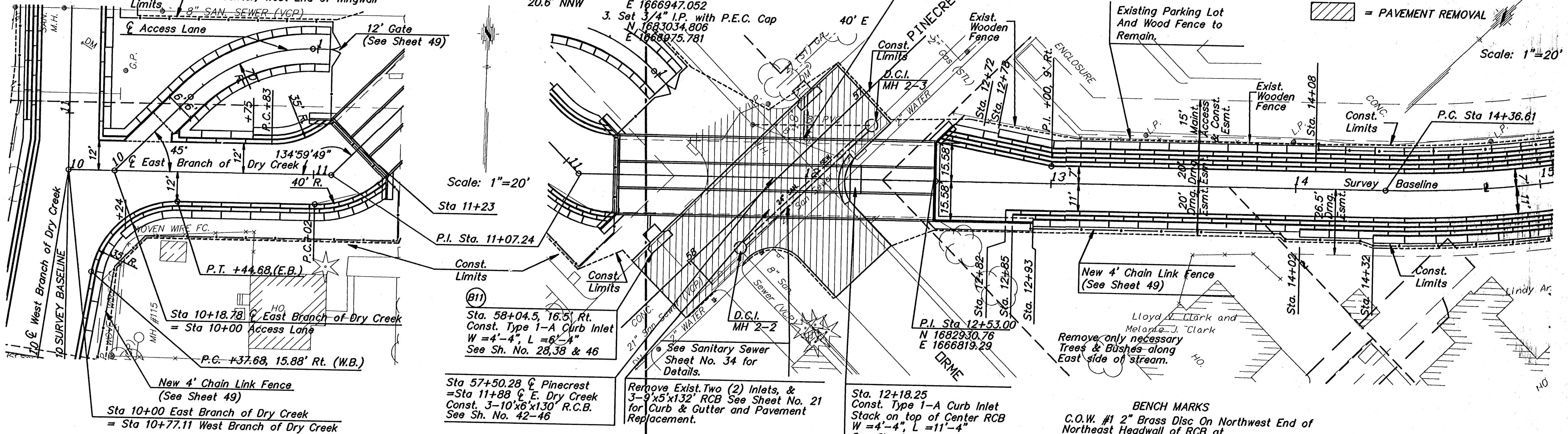


P.I. Sta. 10+77.11 West Branch
 Sta. 10+00 East Branch
 N 1682824.380
 E 1666610.640
 1. Set 3/4" I.P. with P.E.C. Cap on Top West Bank
 2. No Ties

P.I. Sta. 11+07.24 East Branch
 N 1682826.080
 E 1666717.870
 1. Set 3/4" I.P. with P.E.C. Cap
 2. North Corner, North End, West Headwall To RCB
 3. East Corner, South End, West Headwall To RCB
 4. To Center, West End of Wingwall

P.C. Sta. 14+36.61 East Branch
 N 1683062.639
 E 1666947.052
 1. Set 3/4" I.P. with P.E.C. Cap
 2. Chiselled "+"
 N 1683090.471
 E 1666947.052
 3. Set 3/4" I.P. with P.E.C. Cap
 N 1683034.806
 E 1668975.781

FHWA REG. NO.	STATE	PROJECT NO.	YEAR	SHEET NO.	SHEETS
7	KANSAS	54-87 K-4445-01	1998	20	73



3					
2					
1					
NO.	DATE	REVISIONS	BY	APP'D	
CITY OF WICHITA					
EAST BRANCH OF DRY CREEK STA 10+00 TO STA 14+50					
SHEET NO.	OF	SCALE	APP'D		
DESIGNED	MDK	DETAILED	MDK	QUANTITIES	MKEC
DESIGN CK.	JNJ	DETAIL CK.	MKEC	QUAN. CK.	MKEC
				TRACE	CK.
				TRACE	CK.