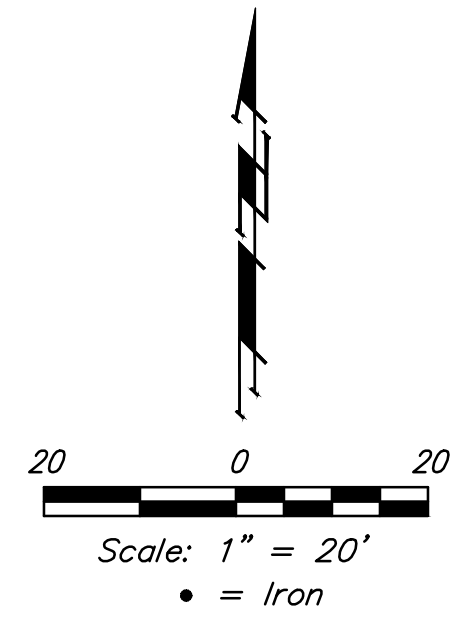
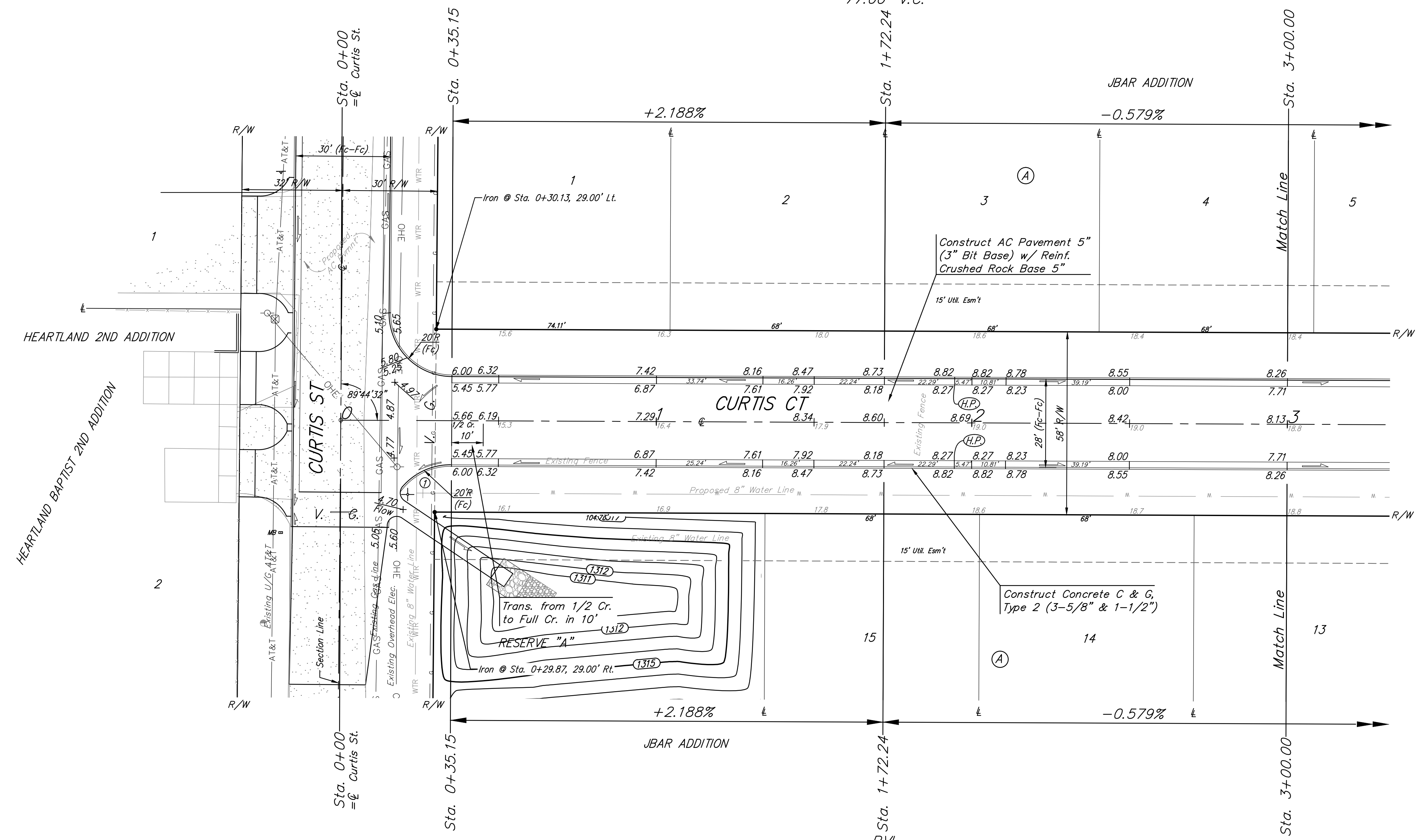


BENCHMARKS:
 Square cut top of curb 16'± south
 of SE corner of Reserve "B".
 Elev. = 1,315.95 (NAVD88)



PVI
 Elev = 1319.00
 77.00' V.C.

PVI
 Elev = 1319.00
 77.00' V.C.



Roll type curb & gutter to be constructed on the pavement on this sheet.
 Top of curb elevation are given for full height curb.



| | | | |
|-----------------------------|---------------|--|-------------------------|
| | | JBAR ADDITION CURTIS CT Sta. 0+00 to Sta. 3+00 | |
| | | <small>Baughman Company, P.A. 315 Ellis St. Wichita, KS 67211 P 316-262-7271 F 316-262-0149 ENGINEERING SURVEYING PLANNING LANDSCAPE ARCHITECTURE</small> | |
| PROJECT NUMBER 472-85211 | DESIGN AEG | DRAWN JAK | DATE 6/18/15 |
| REVISIONS: | APPROVED | SCALE Noted | SHEET 8 OF 20 |