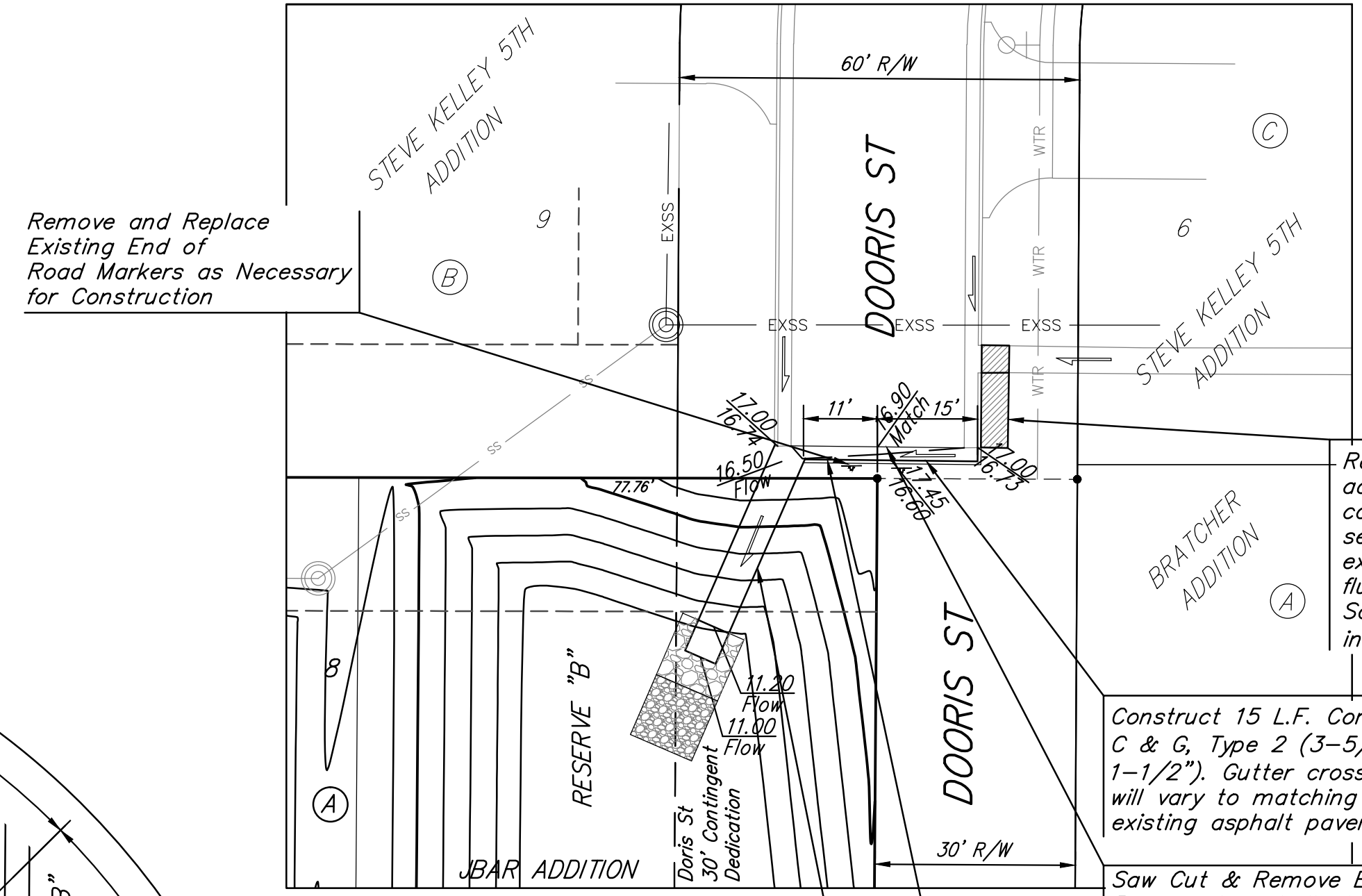
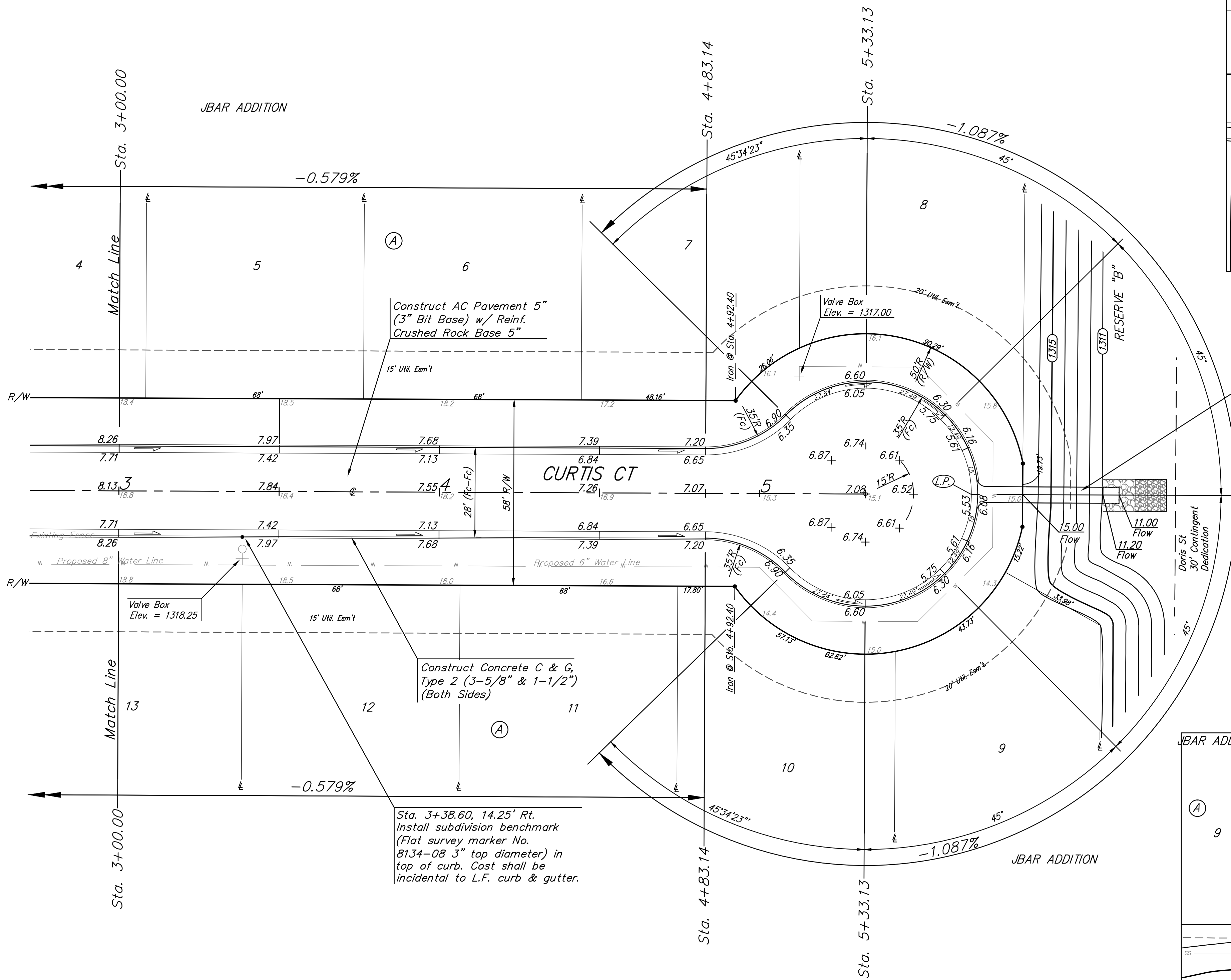
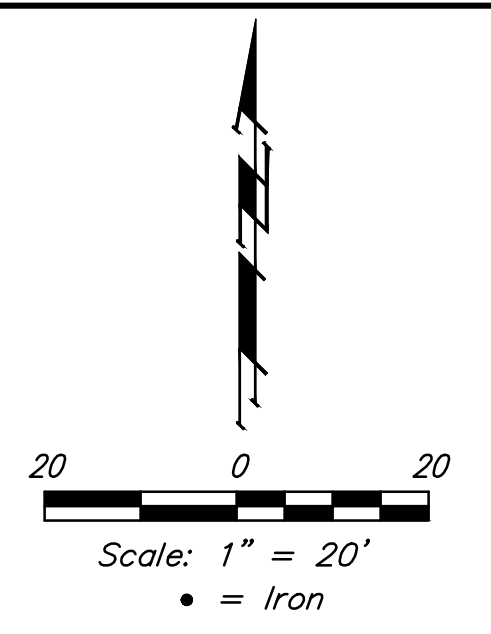


BENCHMARKS:
 Square cut top of curb 16± south
 of SE corner of Reserve "B".
 Elev. = 1315.95 (NAVD88)



Remove 16 L.F. of existing concrete flume adjacent to the back of curb. Replace 5 L.F. of concrete flume to allow for the east-west flume section perpendicular to Doris to drain to the existing curb and gutter of Doris. Transition flume curbs to match into the curb and gutter. Saw cutting, removal, backfilling, etc. to be incidental to the "Concrete Flume" bid item.

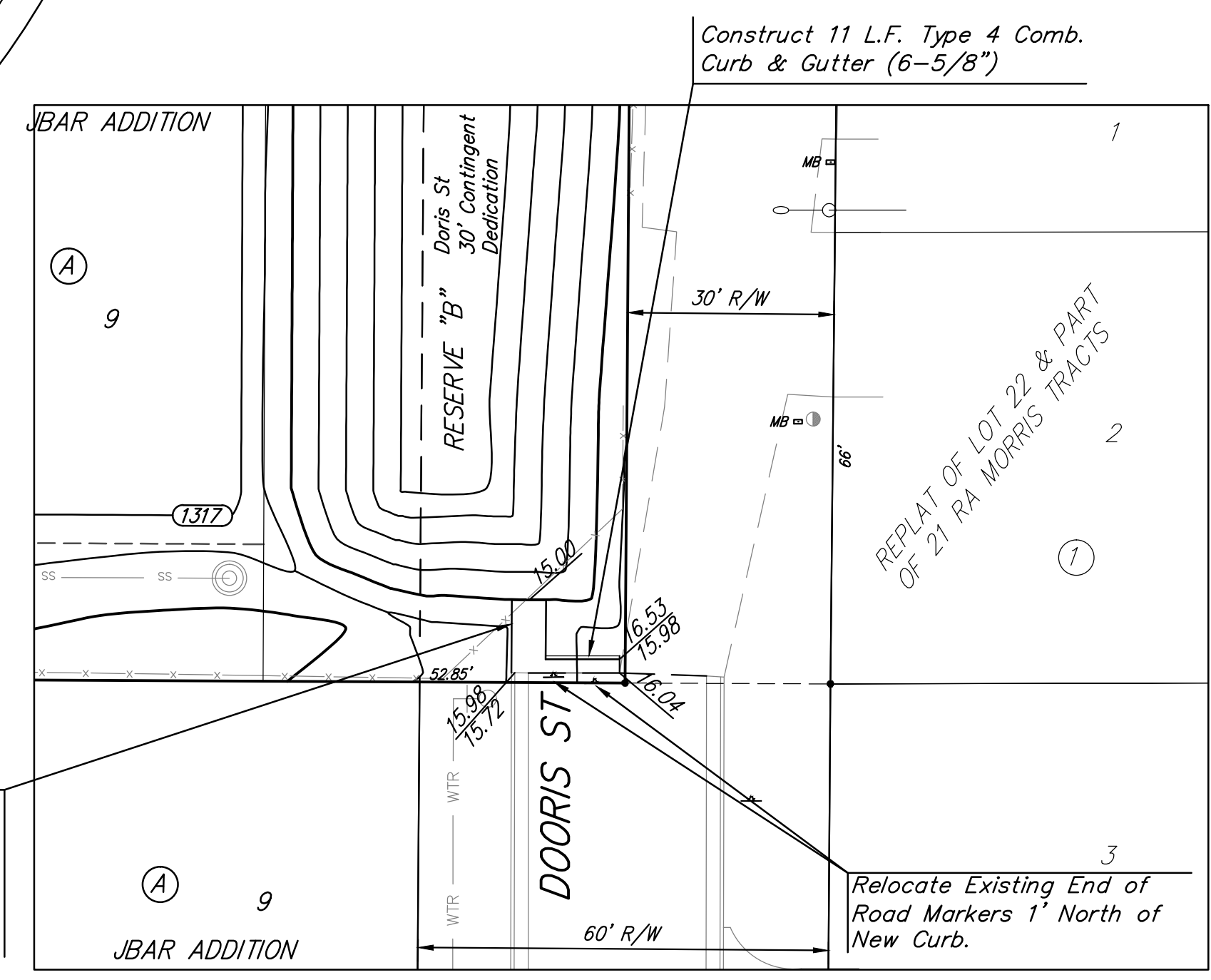
Construct 15 L.F. Concrete C & G, Type 2 (3-5/8" & 1-1/2"). Gutter cross-slope will vary to matching existing asphalt pavement.

Saw Cut & Remove Existing Pavement as Indicated. Cost Shall be incidental to cost of Flume.

Construct 11 L.F. Type 4 Comb. Curb & Gutter (6-5/8"). Gutter cross-slope will vary to matching existing asphalt pavement. Transition from full height curb (east of C) to roll curb (west of C) in 2' at C of Doris St.

Construct 34 L.F. Reinf. Conc. Flume and 9 SY Light-Stone Riprap & Rock Infiltration Basin (See Detail, Sheet 7) Adjust adjacent pond slope grading to match flume elevations.

At all locations where proposed flume construction abuts existing or proposed curb and gutter, the flume shall be tied to the curb and gutter by 2 - 24" long #4 rebars at each tie-in location.



Construct 44 L.F. Reinf. Conc. Flume and 9 SY Light-Stone Riprap & Rock Infiltration Basin (See Detail, Sheet 7) Adjust adjacent pond slope grading to match flume elevations.

Construct 11 L.F. Type 4 Comb. Curb & Gutter (6-5/8")

Construct 11 L.F. Reinf. Conc. Flume (See Detail, Sheet 7) Flume top of curbs shall match proposed basin contours

Roll type curb & gutter to be constructed on the pavement on this sheet. Top of curb elevation are given for full height curb.

Subdivision Bench Marks

Street & Station	Location Description	Elevation
Curtis St 3+14.14, 14.25' Rt.	Adjacent to Fire Hydrant at NW Corner of Lot 1, Block A.	
Curtis Ct 3+14.14, 14.25' Rt.	Adjacent to Fire Hydrant at NE Corner of Lot 13, Block A.	

VALVE LOCATION TABLE

VALVE NUMBER	BASELINE STATION	OFFSET DISTANCE	OFFSET DIRECTION
1	1+42.12	26'	Rt.

Baughman

Baughman Company, P.A. 315 Ellis St. Wichita, KS 67211 P 316-262-7271 F 316-262-0149
 ENGINEERING | SURVEYING | PLANNING | LANDSCAPE ARCHITECTURE

PROJECT NUMBER
472-85211

REVISIONS:

JBAR ADDITION

CURTIS CT

Sta. 3+00 to Sta. 5+33.13

DESIGN: AEG
 DRAWN: JAK
 APPROVED: [Signature]
 DATE: 6/18/15

SCALE: Noted
 SHEET: **9 OF 20**

