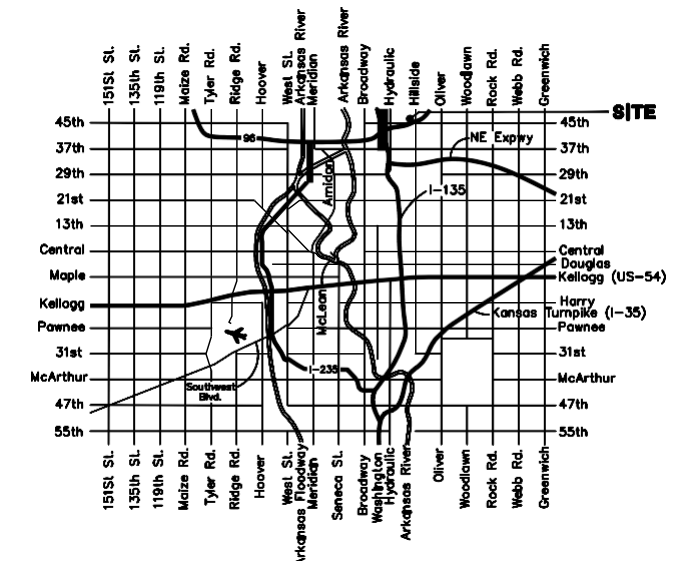


STORM WATER DRAIN #401 to serve **FALCON FALLS 6TH ADDITION** CITY OF WICHITA, KANSAS

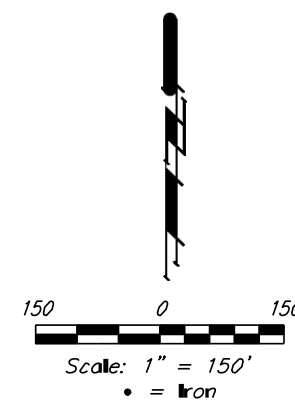
Gary Janzen, P.E. City Engineer
Project Number
468-85038
O.C.A. Number
751537



VICINITY MAP

GENERAL NOTES:

- Contractor will be required to provide notice to utility companies a minimum of forty-eight (48) hours prior to any excavation, as follows:
Kansas One-Call 687-2470
The Contractor must notify the following in case of an emergency:
Cox Communications 262-4270
Kansas Gas Service 1-888-482-4950
Westar Energy 383-8650
Aquila Energy 1-800-303-0357
AT&T 268-2245
City of Wichita Water Dept. 268-4563
City of Wichita Sewer Maint. 268-4024
City of Wichita Storm Sewer Maint. 268-4094
City of Wichita Traffic Maint. 268-4034
Conoco Phillips Pipeline Co. 1-877-267-2290
Southern Star Pipeline Co. 529-0600
Winder-Morgan Pipeline Co. 1-888-844-5658
- Utility service lines, poles, valve bores, meters, and etcetera are to be adjusted as necessary by others prior to construction unless the plans specifically call for their adjustment by the Contractor or unless the plans specifically identify a utility to be adjusted by its owner during construction. Existing utilities and their location, as shown on the plans, represent the best information obtainable for design. The Contractor will be required to work around existing utilities within the right-of-way which do not conflict with proposed construction.
- Rubble from the removal of miscellaneous structures and excess excavation which is to be wasted shall be disposed of on sites to be provided by the Contractor. These sites shall be approved by the Engineer as to suitability, appearance and site location. Locations, in the opinion of the Engineer, that will leave an unsightly appearance will not be approved. All disposal sites must be approved by the Kansas Department of Health and Environment. Material either stockpiled or disposed of in a flood plain would require a Kansas State Board of Agriculture permit. Any material dumped in waters of the United States or wetlands is subject to U.S. Corps. of Engineers permitting regulations. Any material buried or stockpiled beyond approved construction limits would require additional archaeological investigations unless buried in a previously approved borrow location.
- Trees and shrubs in public right-of-way which are in direct conflict with proposed new construction shall be removed by the Contractor ONLY with the Developer or Baughman Company approval. Trees and shrubs which are not in direct conflict with proposed new construction shall be saved and protected from damage.
- The Contractor shall give all property owners and/or tenants of developed property abutting the construction of this project a minimum of ten (10) days notice prior to start of construction.
- The Contractor shall be responsible for preserving property irons. The Contractor will be required to re-establish any property irons which are damaged or destroyed by his construction operations. Such irons shall be re-established by a Licensed Land Surveyor in accordance with state laws.
- All existing and proposed erosion control measures including silt fencing, erosion control mat, straw bales, inlet barriers, and const. entrance shall be maintained throughout construction by the Contractor and until project is accepted by the City of Wichita. The on-site Engineer shall complete weekly reports on the status of erosion control measures. The Contractor shall be required to comply with maintenance and/or replacement of erosion control measures as determined by the on-site Engineer until project is accepted by City of Wichita.
- All areas of Reserve "A" Falcon Falls 6th Addition and Reserve "C" Falcon Falls 3rd Addition disturbed by construction shall be seeded and mulched as follows:
(Permanent Seeding)
SEED — Kansas Premium Fescue Blend
8 Lbs./1000 sq. ft. & Annual Rye 3 Lbs./1000 sq. ft.
FERTILIZER — 12-24-12 Ratio at 45 Lbs./Ac.
All other disturbed areas not in street R/W are to be seeded as follows: (Temporary seeding)
SEED — Rye grass (PLS) 5 Lbs./1000 sq. ft.
All costs associated with seeding shall be included in bid item "Seeding". All seeding operations shall conform to City of Wichita Standard Specifications.
- At conclusion of construction, an as-built survey will be completed by the Engineer. The Contractor will be required to finish and smooth grade all locations as necessary that are not within $\pm 0.2'$ of street R/W plan grade or within $\pm 0.3'$ of plan grade outside of street R/W. The Contractor shall include all costs associated with the regrading and/or remobilization in the bid item "Grading, Mass"
- The Developer for this project is Jay Russell (316) 722-2417.



BENCHMARKS

Chiseled square cut on top of headwall of R.C.B.C., 31.1' southeast of the most southerly corner of Lot 1, Block A & 36.6' northeast of the northeast corner of Reserve "C".
Elev. = 1349.83 NAVD88

Chiseled square cut on top of curb at west end of median, 89.6' south-southwest of the southwest corner of Lot 17, Block A & 86.2' south-southeast of the southeast corner of Lot 31, Block A.
Elev. = 1348.62 NAVD88

SHEET INDEX

Title Sheet	1
Mass Grading / Erosions Control	2-3
Mass Grading Details	4
Erosion Control BMP Details	5-9
Coordinate Sheet	10
Copy of Plat	11

Storm Water Certification:
These construction plans were prepared in accordance with the current Storm Water Management Regulations as set forth in the City of Wichita's Storm Water Management Ordinance 16.32 and the policies/guidelines presented in the Wichita/Sedgewick County Storm Water Manual.

Disturbed Area = 13.7 ac.
Water Quality Treatment: Provided by existing ponds
Downstream Channel Protection: This site drains to existing ponds with established outfall structures.

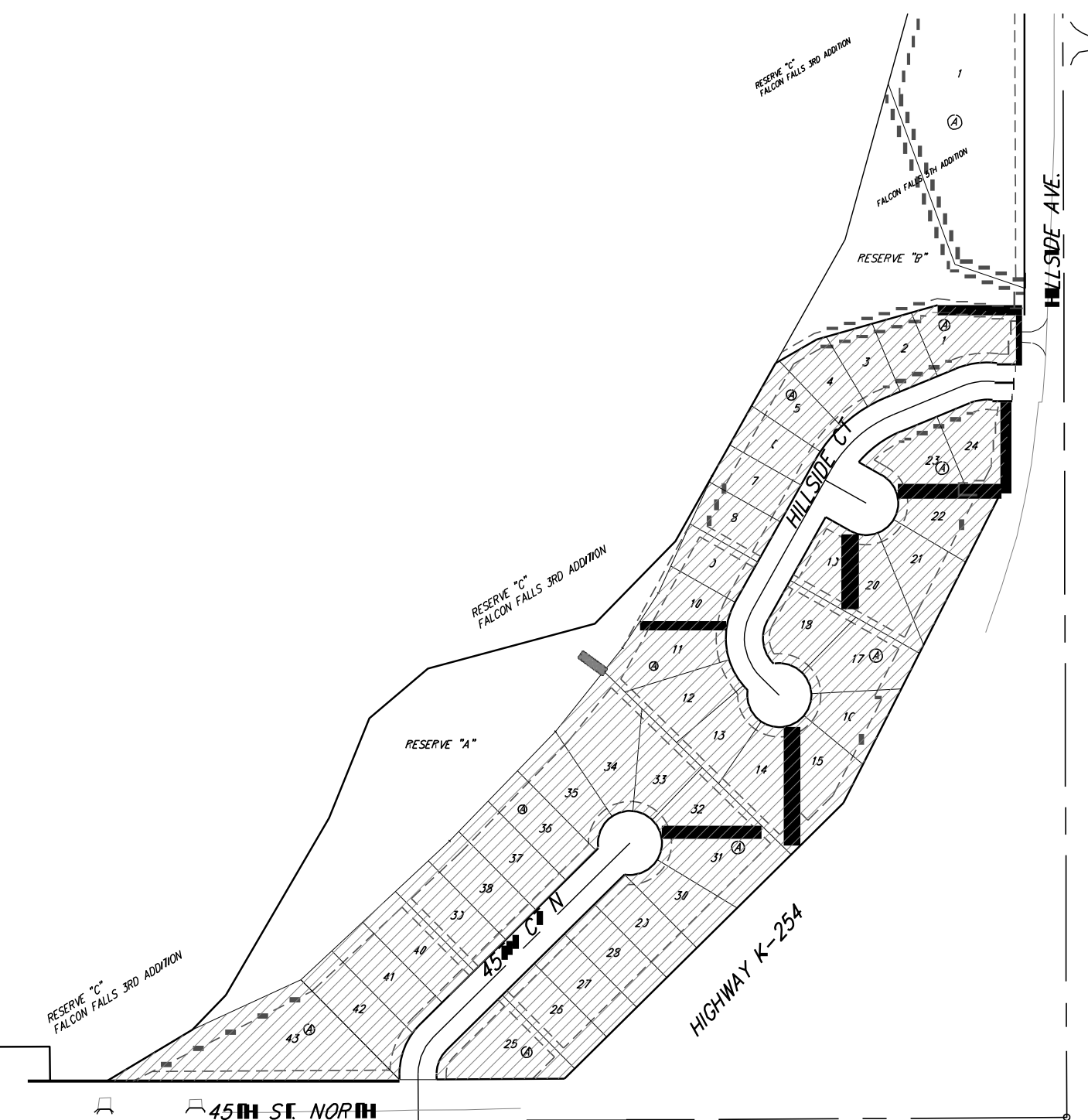
EARTH WORK TOTALS (Unadjusted)

	C.Y. EXCAVATION	C.Y. FILL
Total Mass Grading	14,332	13,611

Earthwork Quantities reflect the best available topography; the Contractor shall satisfy himself with the earthwork quantities as bid for L.S. "Grading, Mass" prior to bidding. No additional payments or change orders for earthwork will be accepted.

CONSTRUCTION SEQUENCE:

- Sewer and Water line construction.
- Storm water drain construction. Complete the grading and compaction for Lots 25-42 (Phase 1) first to allow for Phase 1 storm sewer and street construction by others.
- The mass grading of Lots 1-24 (Phase 2) of this project will follow construction of phase 1 mass grading.



SW COR., SE1/4, SEC. 22,
TWP. 26-S, R-1-E

SE COR., SE1/4, SEC. 22,
TWP. 26-S, R-1-E

Proposed Streets: [Symbol]

Benefit District: [Symbol]



Baughman Company, P.A. 315 Ellis St. Wichita, KS 67211 P 316-262-7271 F 316-262-0149
ENGINEERING | SURVEYING | PLANNING | LANDSCAPE ARCHITECTURE

