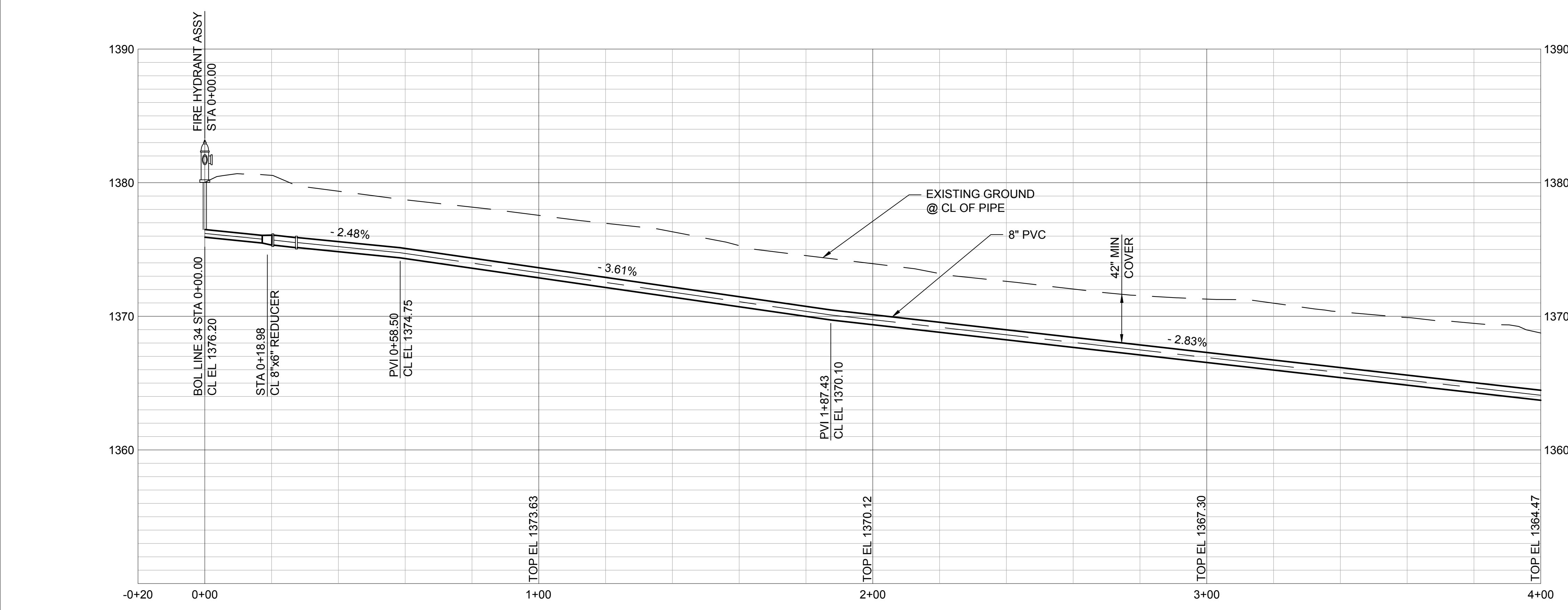
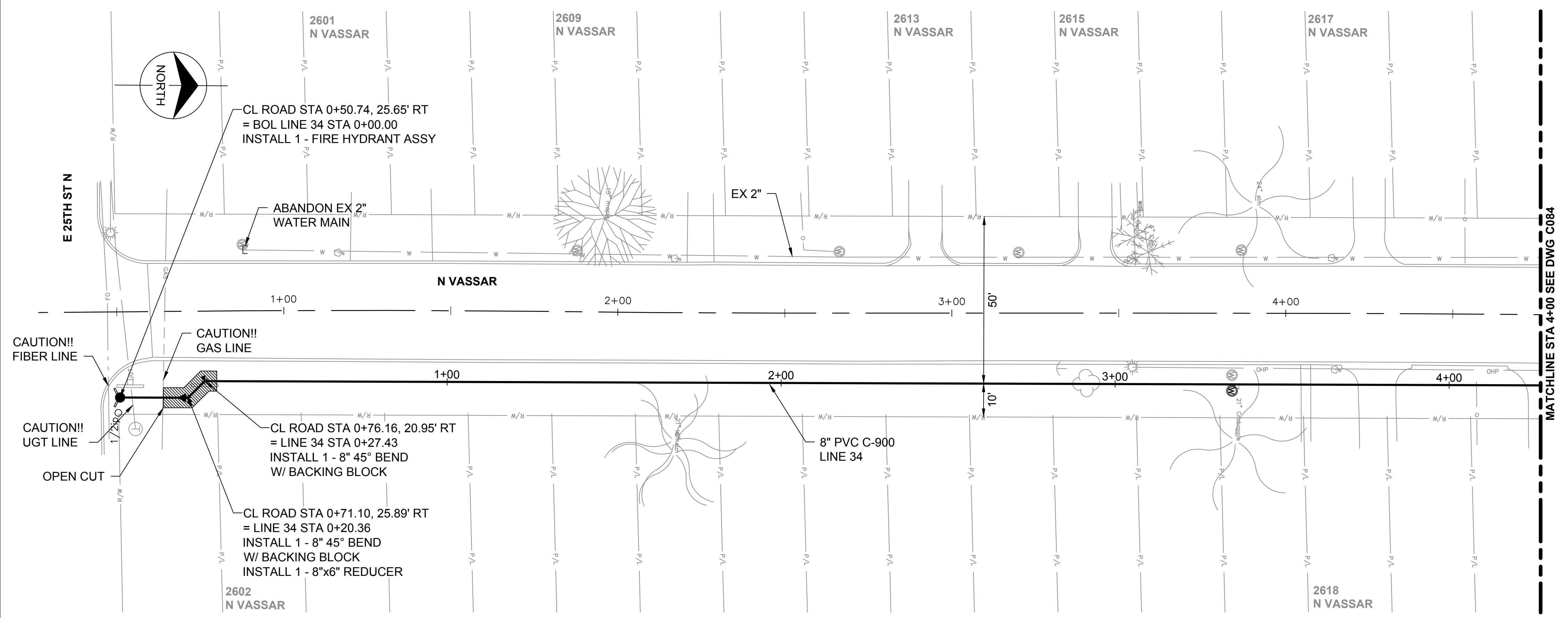


no.	date	by	ckd	description
-----	------	----	-----	-------------

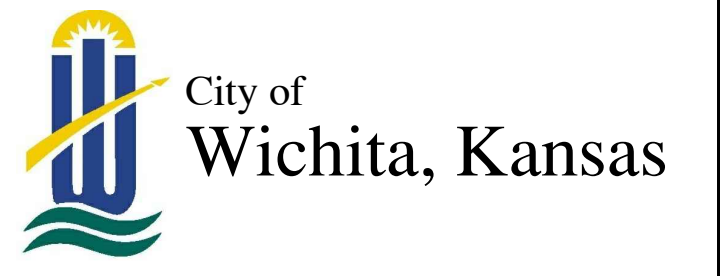


- NOTE:**
- REFER TO THE WATER SERVICE TRANSFER TABLES, DRAWINGS C092 - C093 FOR METER RELOCATES.
 - INSTALL WATERMAIN BY DIRECTIONAL DRILLING UNLESS OTHERWISE NOTED.
 - FOR SANITARY SEWER CROSSINGS LESS THAN 24" VERTICAL CLEARANCE FROM WATERMAIN, REBUILD SANITARY SEWER PER SPECIFICATION 803.4a.
 - CONTRACTOR TO VERIFY METER LOCATION AND SERVICE TRANSFER REQUIREMENTS FOR 2602 N. VASSAR AVE.



9400 WARD PARKWAY
KANSAS CITY, MO 64114
816-333-9400
LICENSEE NO. 000165

date	designed	detailed
APRIL 24, 2014	J. MCNIFF	M. CHARRETTE
	checked	
		S. WILSON



**ETHEL NEIGHBORHOOD
WATER MAIN REPLACEMENT
LINE 34 - N VASSAR**

project	contract
77025	448-90612
drawing	rev.
C083	0
sheet 90 of 101 sheets	
file LINE 34.dwg	

This document has been digitally signed.
05/08/15 9:55 AM

Name: Julie Ann McNeill
Discipline: Professional Engineer
License No. 21158