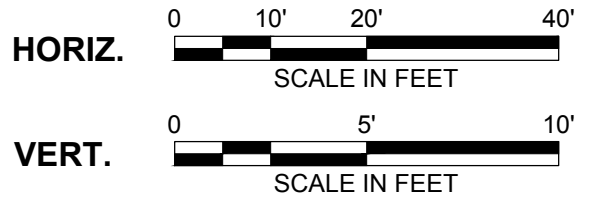
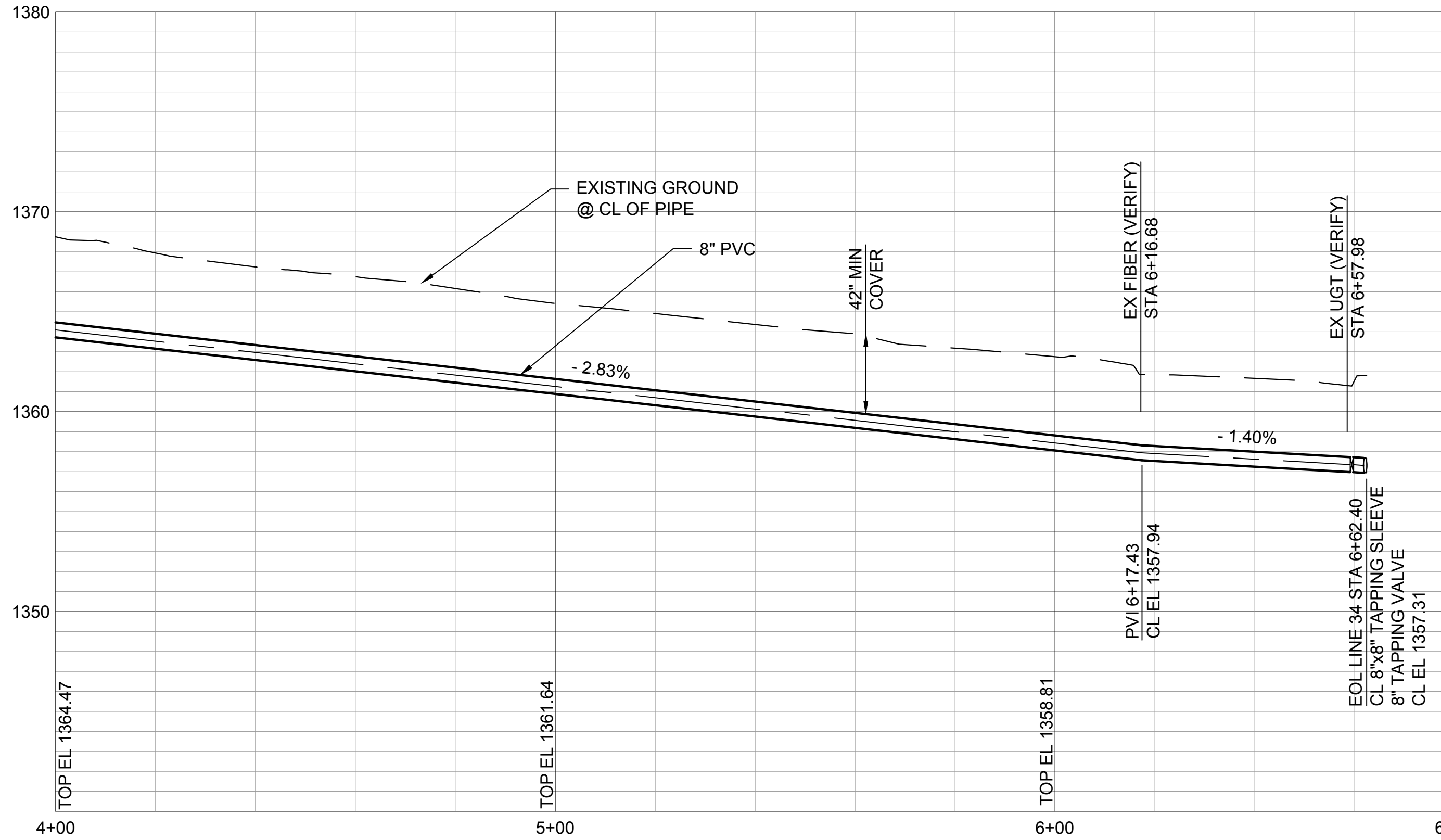


CL ROAD STA 7+11.34, 20.67' RT  
 = EOL LINE 34 STA 6+62.40  
 INSTALL 1 - 8"x8" TAPPING SLEEVE  
 INSTALL 1 - 8" TAPPING VALVE (S)  
 INSTALL 1 - 6" VALVE BOX  
 (TO BE FURNISHED AND SET BY  
 CITY OF WICHITA WATER DEPT.)

Scale For Microfitting

Inches



- NOTE:**
- REFER TO THE WATER SERVICE TRANSFER TABLES, DRAWINGS C092 - C093 FOR METER RELOCATES.
  - INSTALL WATERMAIN BY DIRECTIONAL DRILLING UNLESS OTHERWISE NOTED.
  - FOR SANITARY SEWER CROSSINGS LESS THAN 24" VERTICAL CLEARANCE FROM WATERMAIN, REBUILD SANITARY SEWER PER SPECIFICATION 803.4a.



9400 WARD PARKWAY  
 KANSAS CITY, MO 64114  
 816-333-9400  
 LICENSEE NO. 000165

date	APRIL 24, 2014	detailed	M. CHARRETTE
designed	J. MCNIFF	checked	S. WILSON



**ETHEL NEIGHBORHOOD  
 WATER MAIN REPLACEMENT  
 LINE 34 - N VASSAR**

project	77025	contract	448-90612
drawing	rev. <b>C084 - 0</b>		
sheet	91	of	101 sheets
file	LINE 34.dwg		

This document has been digitally signed.  
 05/08/15 9:55 AM

Name: Julie Ann Monif  
 Discipline: Professional Engineer  
 License No.: 21158