



STORMWATER DRAIN #394 FOR
FOX RIDGE PLAZA ADDITION

STORMWATER DRAIN #394

FOX RIDGE PLAZA ADDITION

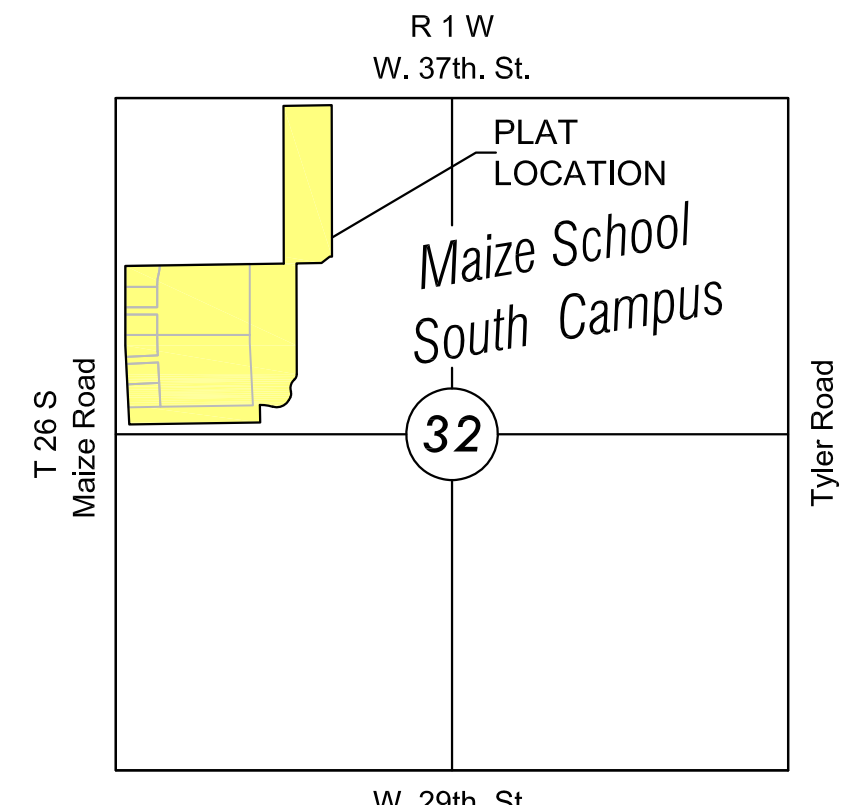
AN ADDITION TO THE CITY OF WICHITA
SEDGWICK COUNTY, KANSAS

PROJECT NO. 468-84953

GARY L. JANZEN, P.E. - CITY ENGINEER

OCA 751534

Cornejo/Uruh Excavating - Contractor
G. Baalman - City of Wichita, Field Project Engineer
MKEC - Inspector
Completion Date: 8/28/2017



VICINITY MAP

No Scale

INDEX TO DRAWINGS

SHEET NO.	DESCRIPTION
01	TITLE SHEET
02	OVERALL GRADING & SEQUENCE PLAN
03-08	GRADING PLANS
09	CHANNEL DETAILS
10	PLANT LIST
11	LANDSCAPE PLAN
12	WETLANDS PLANTING PLAN
13	WETLAND SECTIONS
14	EROSION CONTROL PLAN
15-19	BMP DETAILS
20	BUBBLE MAP
21	PLAT

BENCHMARKS

Platted BM #3. PK Nail in asphalt on bike path 60 feet south of 33rd street on east side of Maize Road. 28 feet northwest of power pole. Elev. = 1351.87' NAVD

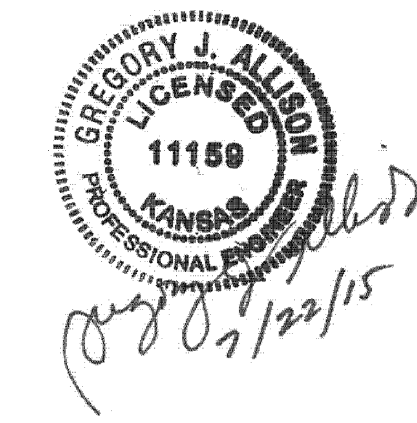
CONTROL POINTS

- CP #10
5/8" Rebar with 2" aluminum MKEC CLS 39 cap
N = 1706912.98 E = 1615216.59
2nd round-a-bout east of Maize Rd 23 feet west of flag pole
12 feet NE of sign
Elev. = 1358.16 NAVD 88
- CP #11
5/8" Rebar with 2" aluminum MKEC CLS 39 cap
N = 1707025.76 E = 1613856.03
1st round-a-bout east of Maize Rd 14 feet west of flag pole
28 feet NNE of sign
Elev. = 1357.16 NAVD 88
- CP #12
5/8" Rebar with 2" aluminum MKEC CLS 39 cap
N = 1707973.54 E = 1613911.40
948 feet north of 1st round-a-bout east of Maize Rd
8 feet south of south edge of asphalt where drive makes a horseshoe turn 23 feet east of light pole
Elev. = 1354.99 NAVD 88
- CP #13
5/8" Rebar with 2" aluminum MKEC CLS 39 cap
N = 1709270.20 E = 1613848.29
164 feet east of fence corner at very northeast corner of Menards property 4 feet east of east edge of concrete drive on south side of 37th St North 4 feet south of south edge of sidewalk
Elev. = 1354.38 NAVD 88

Horizontal and Vertical Datum:

Horizontal Datum: Kansas Coordinate System 1983 South Zone. Horizontal coordinates modified to ground using a scale factor of 1.000120014

Vertical Datum: NAVD 88



Stormwater Certification:
New Development
These construction plans were prepared in accordance with the current Stormwater Management Regulations as set forth in the City of Wichita's Stormwater Management Ordinance 16.32 and the policies/guidelines presented in the Wichita/Sedgwick County Stormwater Manual.

Disturbed Area: 33.35 AC.
Water Quality Treatment Required: 2.9 AC.-FT.
Water Quality Treatment Provided: 5.1 AC.-FT.
Downstream Channel Protection: N/A. The channel consists of wet ponds and culverts to Cadillac Lake.
Detention Required: 25 AC.-FT.
Detention Provided: 29 AC.-FT.

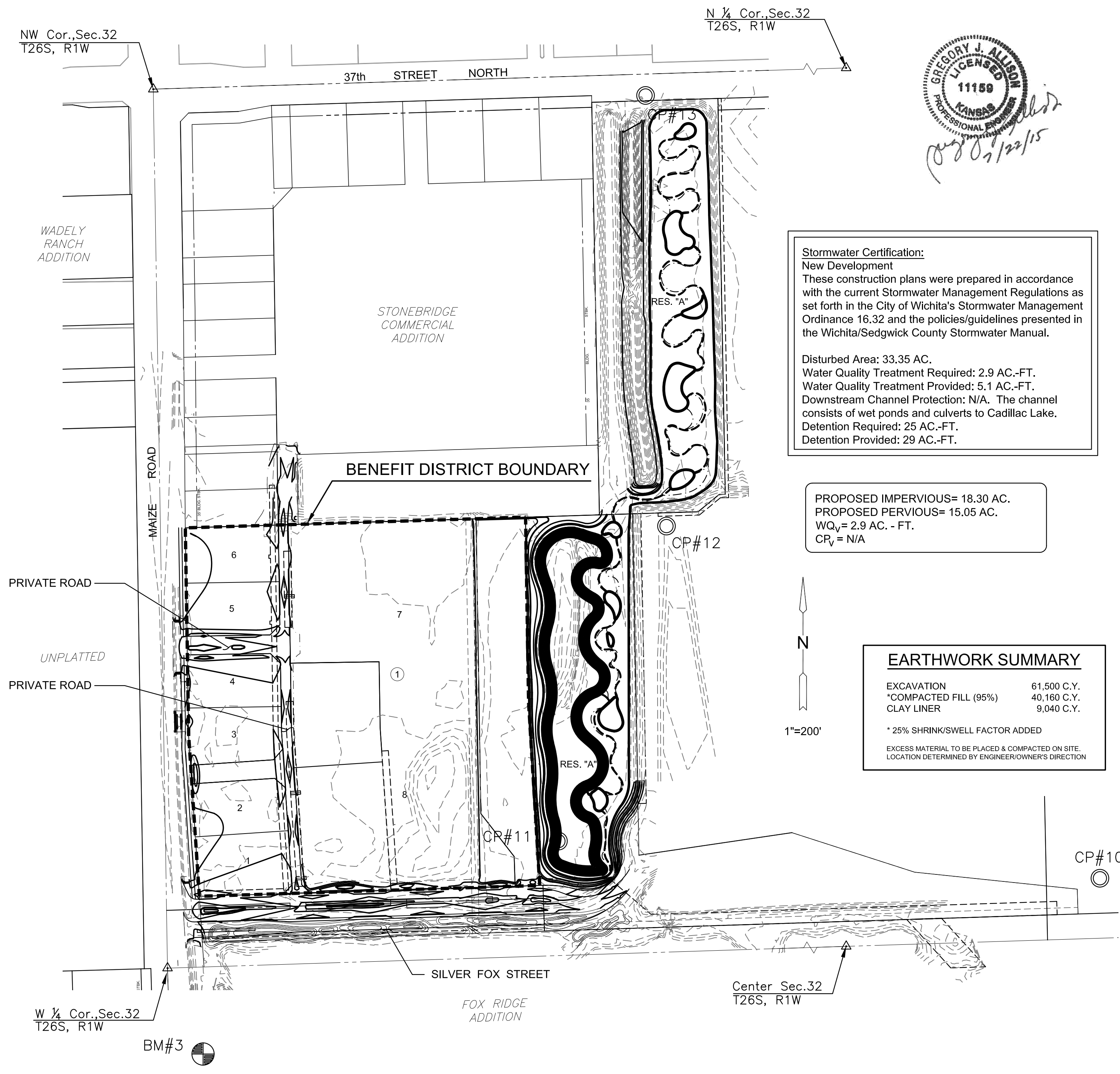
PROPOSED IMPERVIOUS= 18.30 AC.
PROPOSED PERVIOUS= 15.05 AC.
WQ_v= 2.9 AC. - FT.
CR_v = N/A

EARTHWORK SUMMARY

EXCAVATION	61,500 C.Y.
*COMPACTED FILL (95%)	40,160 C.Y.
CLAY LINER	9,040 C.Y.

* 25% SHRINK/SWELL FACTOR ADDED

EXCESS MATERIAL TO BE PLACED & COMPACTED ON SITE. LOCATION DETERMINED BY ENGINEER/OWNER'S DIRECTION



GENERAL NOTES

- UNLESS SHOWN OR STATED OTHERWISE ON THESE DRAWINGS, MATERIALS AND CONSTRUCTION SHALL BE IN ACCORDANCE WITH CITY OF WICHITA CONCRETE PAVEMENT AND ASPHALTIC CONCRETE PAVEMENT SPECIFICATIONS.
- CONTRACTOR WILL BE REQUIRED TO PROVIDE A MINIMUM ADVANCE NOTICE OF SEVENTY-TWO (72) HOURS TO UTILITY COMPANIES PRIOR TO STARTING ANY EXCAVATION AS FOLLOWS:
KANSAS ONE-CALL 1-800-344-7233
OR 687-2470 (LOCAL WICHITA)
THE CONTRACTOR MUST NOTIFY THE FOLLOWING IN CASE OF AN EMERGENCY:
SBC (TELEPHONE) 800-870-8390
COX COMMUNICATIONS (CABLE) 252-0661
WESTAR (ELECTRIC) 383-8600
KANSAS GAS SERVICE (GAS) 832-3101
CITY OF WICHITA WATER & SEWER MAINT. 262-6000
BLACK HILLS ENERGY (GAS) 800-303-0357
- THE CONTRACTOR SHALL BE RESPONSIBLE FOR PRESERVING PROPERTY IRONS. THE CONTRACTOR WILL BE REQUIRED TO RE-ESTABLISH ANY PROPERTY IRONS WHICH ARE DAMAGED OR DESTROYED BY HIS CONSTRUCTION OPERATIONS. SUCH IRONS SHALL BE RE-ESTABLISHED BY A LICENSED LAND SURVEYOR IN ACCORDANCE WITH STATE LAWS.
- EXISTING UTILITIES AND THEIR LOCATIONS, AS SHOWN ON THE PLANS REPRESENT THE BEST INFORMATION OBTAINABLE FOR DESIGN. LOCATION INFORMATION HAS BEEN OBTAINED FROM THE VARIOUS UTILITY COMPANIES AND IS EITHER FROM COMPANY RECORD DRAWINGS OR COMPANY PROVIDED FIELD LOCATIONS. THE PLAN LOCATIONS SHOWN ARE NOT GUARANTEED. ADDITIONAL EXISTING UTILITIES MAY ALSO BE ENCOUNTERED.
- RUBBLE FROM THE REMOVAL OF MISCELLANEOUS STRUCTURES AND EXCESS EXCAVATION WHICH IS TO BE WASTED SHALL BE DISPOSED OF ON SITES TO BE PROVIDED BY THE CONTRACTOR. THESE SITES SHALL BE APPROVED BY THE ENGINEER AS TO SUITABILITY, APPEARANCE AND SITE LOCATION. LOCATIONS THAT, IN THE OPINION OF THE ENGINEER, WILL LEAVE AN UNSIGHTLY APPEARANCE WILL NOT BE APPROVED. ALL DISPOSAL SITES MUST BE APPROVED BY THE KANSAS DEPARTMENT OF HEALTH AND FLOOD PLAIN WOULD REQUIRE A KANSAS STATE BOARD OF AGRICULTURE PERMIT. ANY MATERIAL DUMPED IN WATERS OF THE UNITED STATES OR WETLANDS IS SUBJECT TO U.S. CORPS OF ENGINEERS PERMITTING REGULATIONS. ANY MATERIAL BURIED OR STOCKPILED BEYOND APPROVED CONSTRUCTION LIMITS WOULD REQUIRE ADDITIONAL ARCHAEOLOGICAL INVESTIGATIONS UNLESS BURIED IN A PREVIOUSLY APPROVED BORROW LOCATION.
- ALL COMPACTION OF EARTHWORK SHALL BE 95% STANDARD DENSITY IN ACCORDANCE WITH ASTM D-698.
- OTHER CONSTRUCTION MAY BE UNDER WAY SIMULTANEOUSLY WITH THIS PROJECT. THE CONTRACTOR SHALL COORDINATE WITH ANY CONTRACTORS CONSTRUCTING OTHER PORTIONS OF THE PROJECT.
- EXCESS EXCAVATION SHALL BE STOCKPILED ON-SITE IN A LOCATION APPROVED BY THE FIELD ENGINEER.
- STAKING, TESTING AND INSPECTION WILL BE PROVIDED BY THE CITY OF WICHITA.
- SEE SHEET 09 FOR GRADING NOTES.
- CONTRACTOR SHALL MAKE THEMSELVES FAMILIAR WITH THE LANDSCAPE RELATED NOTES ON SHEET 09 OF 21.

GRADING NOTES:

- NO STOCKPILES SHALL BE PLACED UNDER THE EXISTING OVERHEAD ELECTRIC LINES ALONG THE SOUTH SIDE OF THE PROPERTY. ALL EARTHWORK OPERATIONS SHALL REMAIN 25' OFF OF THE POWER POLES.
- ALL CONTOURS REPRESENT TOP / FINISHED GRADE EXCEPT AS NOTED. CONTRACTOR SHALL OVER EXCAVATE ROAD PER PAVING PLAN CROSS SECTIONS. REFER TO PAVING & INCIDENTAL DRAINAGE FOR FOX RIDGE PLAZA ADDITION PROJECT #472-85166.
- THIS IS DESIGN GRADING. ALL GRADES SHALL BE CONTOURED SMOOTHLY WITH GENTLE ROUNDING/SHAPING OF ALL AFFECTED LAND SURFACES. ABRUPT TRANSITIONS AT THE TOP OF SLOPES WHERE PROPOSED GRADES MEET EXISTING ARE NOT ACCEPTABLE. SURVEY STAKES FOR POND GRADING ARE FOR GENERAL GRADING PURPOSES ONLY. NOT ALL SLOPES ARE CONSTANT AND THEREFORE THE GRADING PLANS SHALL BE REFERRED TO FOR FINAL GRADE SHAPING. WESTLAKES PARKWAY BERMS SHALL BE FINAL GRADED/SHAPED WITH A TRACK DOZER, NOT A BLADE. THE GRADING SHALL BE APPROVED BY MKEC'S LANDSCAPE ARCHITECT PRIOR TO THE ADDITION OF THE TOPSOIL LAYER.
- TOPSOIL SHALL BE REPLACED AT A DEPTH OF 6" IN ALL RESERVE AREAS (EXCEPT LOTS AND GRADES BELOW THE PROPOSED NORMAL POOL ELEVATION WITHIN PONDS). THE TOPSOIL THICKNESS MAY BE INCREASED TO 12" ON BERMS ONCE IT IS DETERMINED EXCESS TOPSOIL IS AVAILABLE. NOTE: THE FINISHED GRADE INDICATES THE SURFACE ELEVATION AFTER THE LAYER OF TOPSOIL HAS BEEN PLACED. NO TOPSOIL SHALL BE PLACED ON BERMS WITHOUT THE PRIOR APPROVAL OF THE LANDSCAPE ARCHITECT. IF TOPSOIL IS PLACED PRIOR TO APPROVAL, THE CONTRACTOR MAY NEED TO REWORK THE BERM IN ORDER TO CONSTRUCT PER THE INTENT OF THE PLAN.
- AS THE PROJECT NEARS COMPLETION, THE CONTRACTOR SHALL RIP (SCARIFY) ALL HAUL ROADS WITH AN AGRICULTURAL IMPLEMENT INTENDED FOR SUCH PURPOSES TO A DEPTH OF 18". MULTIPLE PASSES MAY BE NECESSARY TO THOROUGHLY ALEVATE COMPACTION.
- TOPSOIL SHALL BE WITHOUT ADMIXTURE OF SUBSOIL OR SLAG AND SHALL BE FREE OF STONES, LUMPS, STICKS, PLANTS OR THEIR ROOTS, TOXIC SUBSTANCES OR OTHER EXTRANEIOUS MATTER THAT MAY BE HARMFUL TO PLANT GROWTH OR WOULD INTERFERE WITH FUTURE MAINTENANCE. TOPSOIL pH RANGE SHALL BE 5.5 TO 7.0. TOPSOIL SHALL BE APPROVED BY MKEC'S LANDSCAPE ARCHITECT PRIOR TO PLACEMENT.
MINIMUM TOPSOIL DEPTHS:
24" MINIMUM ON ALL BERMS
4-6" WETLAND AREAS
- EXCESS MATERIAL CAN BE PLACED ON LOTS 1-6, BLOCK 1 AT THE DIRECTION OF THE OWNER OR ENGINEER.

TITLE SHEET

PROJECT NO.	468-84953	
DATE	JULY 2015	
SCALE	1"=200'	
DESIGNED	DRAWN	CHECKED
MLP	MLP	GJA

NO.	REVISION	DATE

SHEET NO.