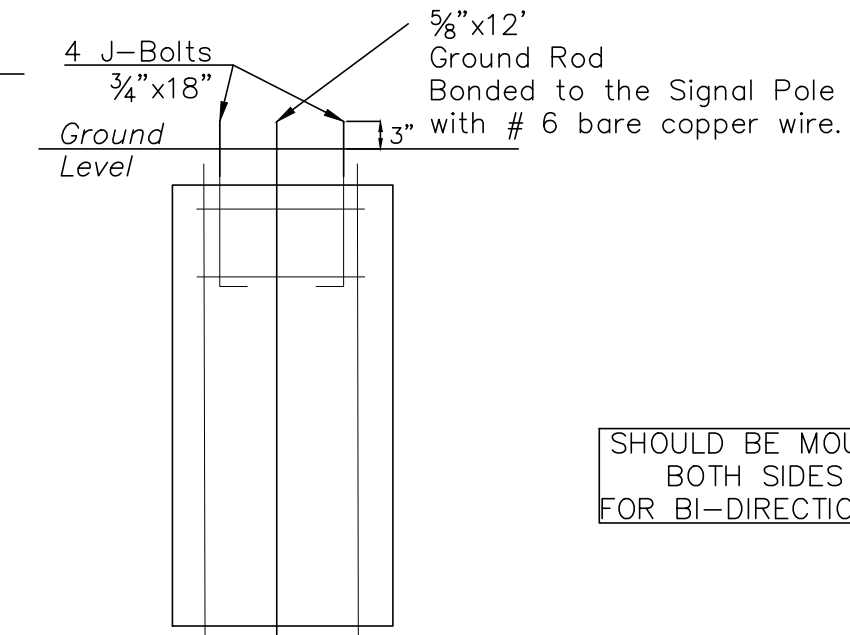
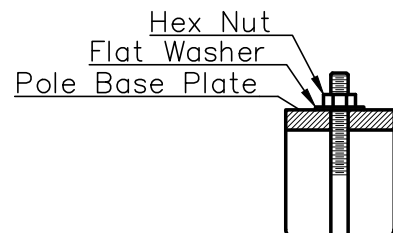


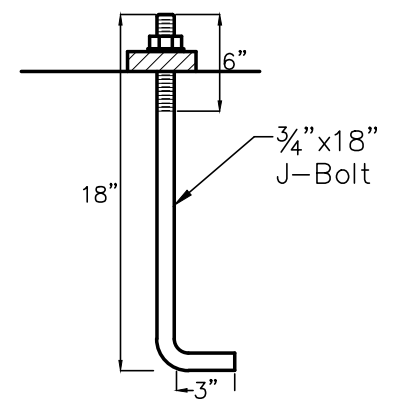
Bolt Circle 13.5" on Center
#6 Rebar 42" x 9 pcs.



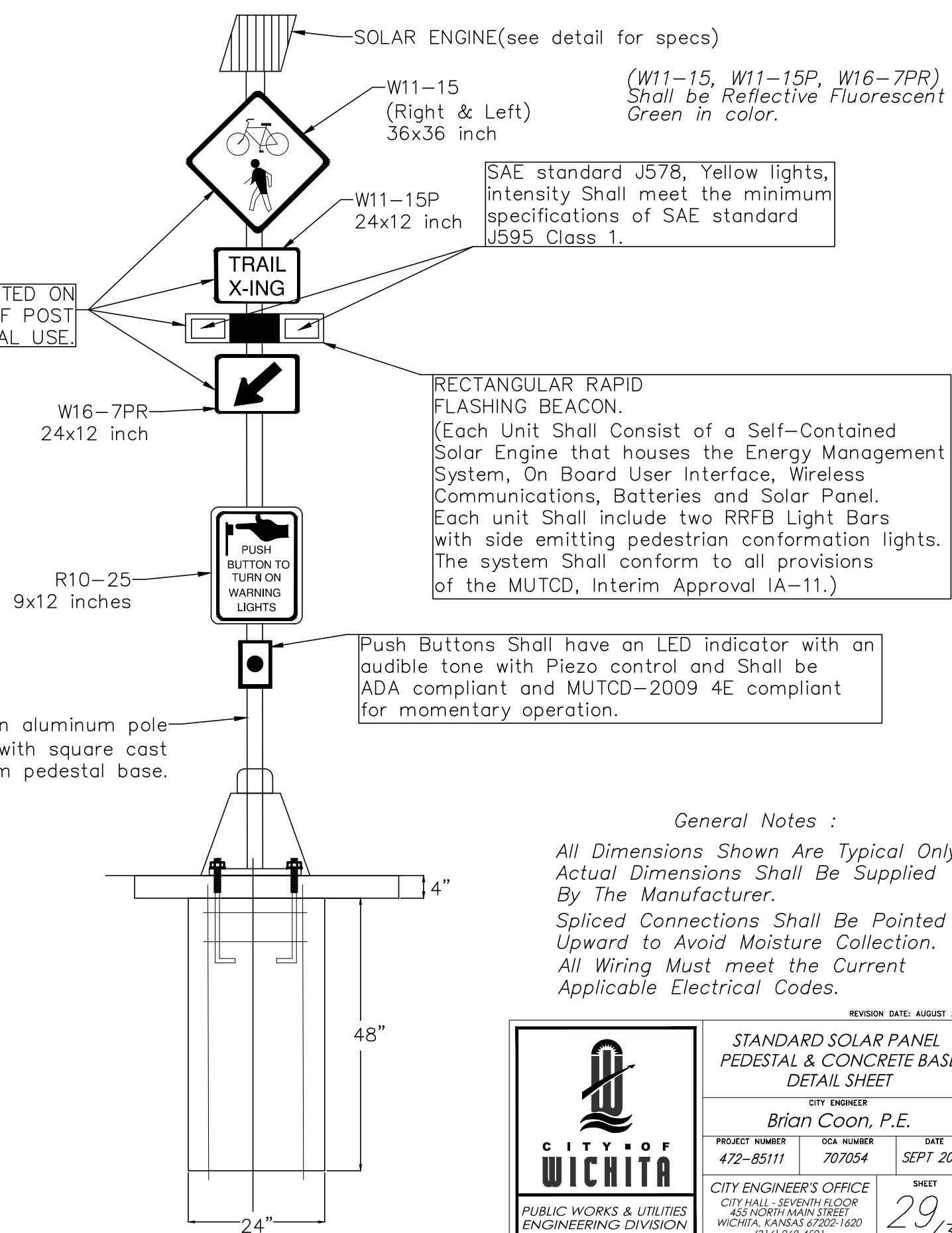
#6 Rebar 60" x 4 pcs.
#4 Rebar Cross bars weld or wire.



Use Keystone "No-Weld
Number 1 Anti-Seize
Compound" on all
bolts & nuts.



SHOULD BE MOUNTED ON
BOTH SIDES OF POST
FOR BI-DIRECTIONAL USE.



General Notes :

All Dimensions Shown Are Typical Only.
Actual Dimensions Shall Be Supplied
By The Manufacturer.

Spliced Connections Shall Be Pointed
Upward to Avoid Moisture Collection.
All Wiring Must meet the Current
Applicable Electrical Codes.

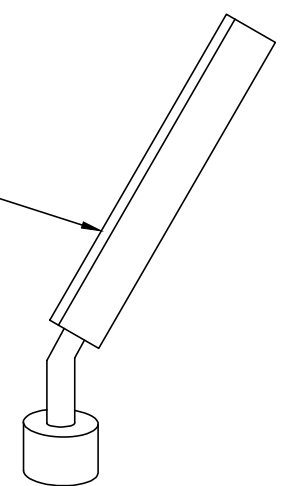
SOLAR PANEL & ENGINE :

(1) 10 watt solar panel no larger than the footprint of the housing with hinged top to access the user interface & batteries.

(2) 7Ah sealed valve regulated lead acid batteries with quick connectors to facilitate faster installation (non-proprietary & readily available from multiple suppliers)

Batteries Shall not need to be charged by a battery charger prior to installation.

Solar panel and system Shall be 12 volt DC.



REVISION DATE: AUGUST 2014

**STANDARD SOLAR PANEL
PEDESTAL & CONCRETE BASE
DETAIL SHEET**

CITY ENGINEER
Brian Coon, P.E.

PROJECT NUMBER 472-85111	OCA NUMBER 707054	DATE SEPT 2014
-----------------------------	----------------------	-------------------

CITY ENGINEER'S OFFICE
CITY HALL - SEVENTH FLOOR
455 NORTH MAIN STREET
WICHITA, KANSAS 67202-1620
(316) 268-4501

SHEET
29/35