

# CHATEAU PARKWAY SIDEWALK

TO SERVE

## GLEN MEADOWS ADDITION

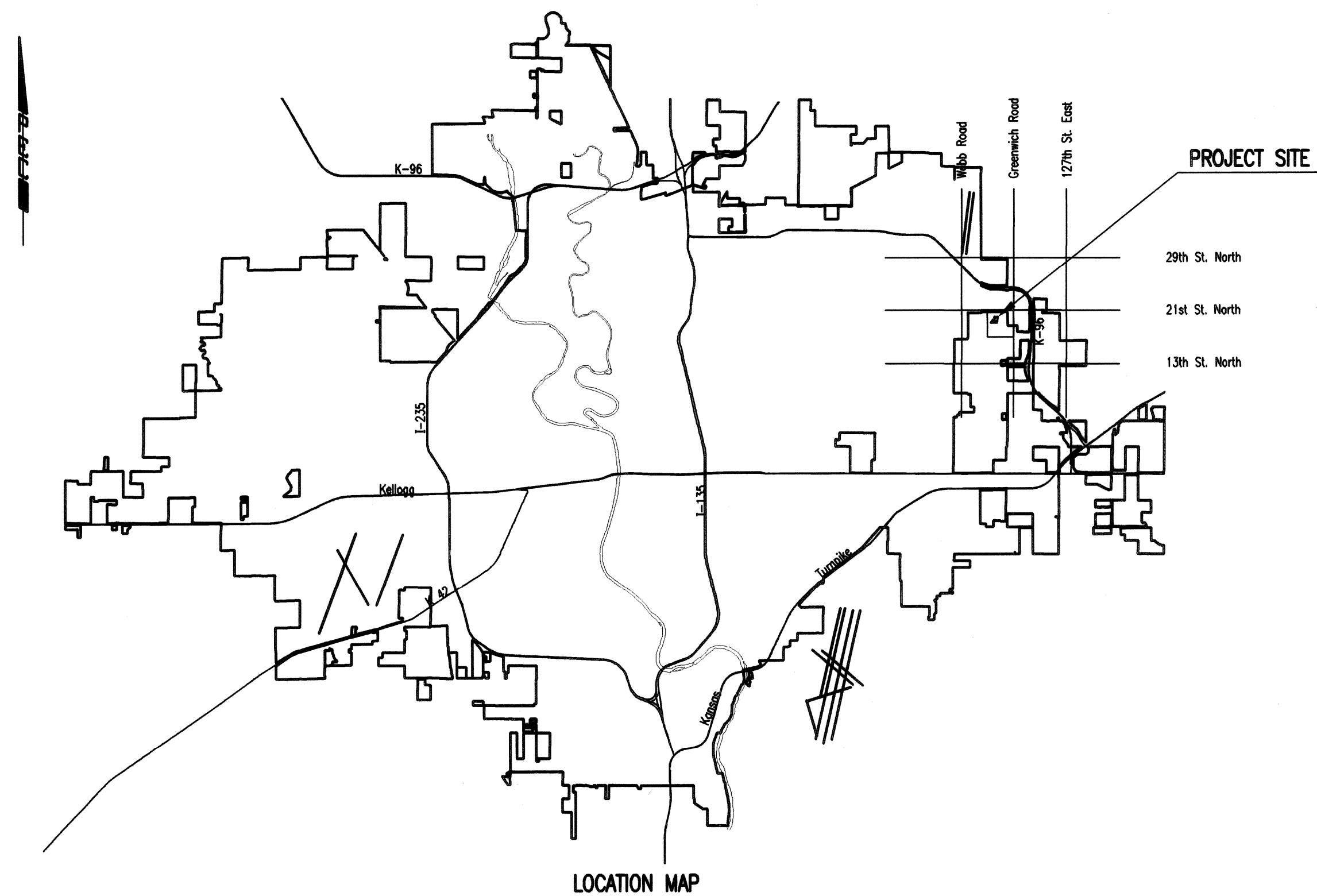
PRIVATE PROJECT NO. 230 PPP (607879)  
**CITY OF WICHITA, KANSAS**  
 GARY JANZEN, P.E. - CITY ENGINEER

DEVELOPER CONTACT

MR. DAVID HAMBRICK  
 SLAWSON COMPANIES  
 727 N. WACO, SUITE 400  
 WICHITA, KANSAS 67203  
 (316) 263-3201

INDEX OF SHEETS

1. TITLE SHEET
2. KEY MAP AND GENERAL NOTES
3. PLAT
4. SIDEWALK PLAN-CHATEAU PKWY
5. DETAILS SHEET-CHATEAU PKWY



APPROVED AS NOTED  
 BY CITY ENGINEER OF WICHITA

Engineering *Julianne Kollman 11-18-13*

**NOTE TO CONTRACTORS**

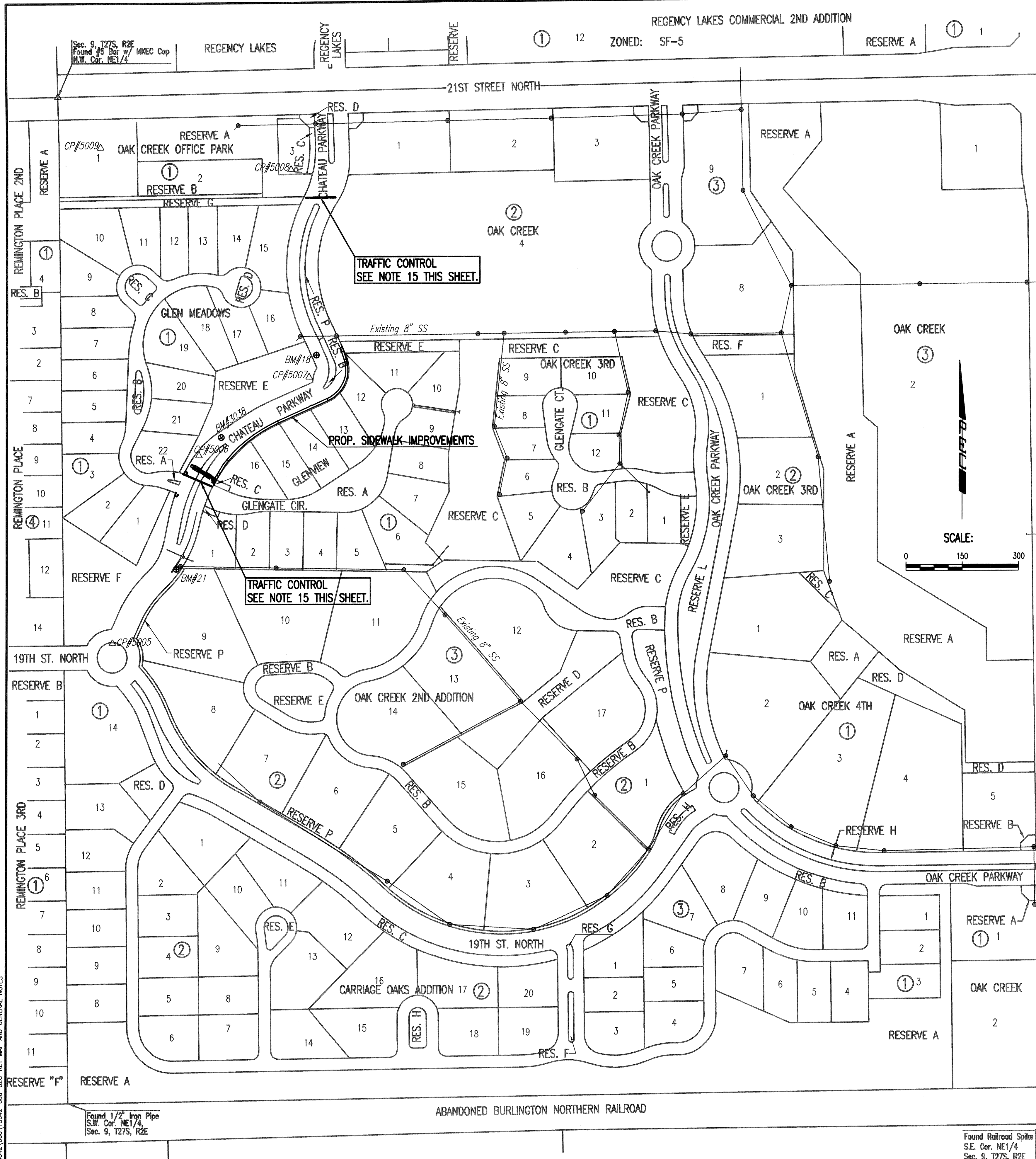
*Inspection and testing for this project are to be provided by a Licensed Consulting Engineering Firm under contract with the Owner/Developer. Said inspection to be in accordance with the City of Wichita standard construction engineering practices and certified by a Licensed Professional Engineer. No work shall be performed in dedicated easements or public right-of-way by the Contractor without such inspection, nor shall any work be commenced without written authorization by the City Engineer.*

**NOVEMBER 2013**

PLANS PREPARED BY  
**PROFESSIONAL ENGINEERING CONSULTANTS, P.A.**  
 ENGINEERS  
 WICHITA, KANSAS



Served 11-18-2013 9:00:38 AM by CAE  
 Plot Scale 1:1 11-18-2013 9:11:25 AM by CHRIS EPP  
 Q:\2013\13642\000\13642-000-000-KEY MAP AND GENERAL NOTES



**GENERAL NOTES**

1. ALL ELEVATIONS SHOWN ARE NAVD88 DATUM. (AT THIS LOCATION, NAVD88 - 0.49' = NGVD29 DATUM).
2. THE CONTRACTOR SHALL NOT START WORK ON THE PROJECT UNTIL THE PROJECT INSPECTOR IS ASSIGNED AND IS PRESENT ON THE SITE. ANY WORK DONE WITHOUT INSPECTION WILL BE REQUIRED TO BE UNCOVERED FOR INSPECTION.
3. ALL CONSTRUCTION WORK AND MATERIAL IN THIS PROJECT SHALL COMPLY WITH CITY OF WICHITA STANDARD SPECIFICATIONS FOR THE CONSTRUCTION OF CITY PROJECTS UNLESS OTHERWISE NOTED IN THE PLANS OR SPECIAL PROVISIONS.
4. UNDERGROUND UTILITY SERVICE LINES AND OVERHEAD UTILITY POLE LINES ARE TO BE ADJUSTED AS NECESSARY BY OTHERS PRIOR TO CONSTRUCTION UNLESS THE PLANS SPECIFICALLY CALL FOR THEIR ADJUSTMENT BY THE CONTRACTOR. EXISTING UTILITIES AND THEIR LOCATION, AS SHOWN ON THE PLANS, REPRESENT THE BEST INFORMATION OBTAINABLE FOR DESIGN. LOCATION INFORMATION HAS BEEN OBTAINED FROM THE VARIOUS UTILITY COMPANIES AND IS EITHER FROM COMPANY RECORD DRAWINGS OR COMPANY PROVIDED FIELD LOCATIONS. THE CONTRACTOR WILL BE REQUIRED TO WORK AROUND EXISTING UTILITIES WITHIN THE RIGHT-OF-WAY WHICH DO NOT CONFLICT WITH PROPOSED CONSTRUCTION.
5. PROTECT EXISTING TREES FROM DAMAGE DURING CONSTRUCTION. NOTIFY THE ENGINEER TO HAVE TREES TRIMMED WITHIN THE WORK AREA TO AVOID DAMAGE DURING CONSTRUCTION.
6. RUBBLE FROM THE REMOVAL OF MISCELLANEOUS STRUCTURES SHALL BE DISPOSED OF ON SITES TO BE PROVIDED BY THE CONTRACTOR AND APPROVED AS NOTED BELOW.
- ALL DISPOSAL SITES MUST BE APPROVED BY THE KANSAS DEPARTMENT OF HEALTH AND ENVIRONMENT. MATERIAL EITHER STOCKPILED OR DISPOSED OF IN A FLOOD PLAIN WOULD REQUIRE A KANSAS STATE BOARD OF AGRICULTURE PERMIT. ANY MATERIAL DUMPED IN WATERS OF THE UNITED STATES OR WETLANDS IS SUBJECT TO U.S. CORPS OF ENGINEERS PERMITTING REGULATIONS. ANY MATERIAL BURIED OR STOCKPILED BEYOND APPROVED CONSTRUCTION LIMITS WOULD REQUIRE ADDITIONAL ARCHEOLOGICAL INVESTIGATIONS UNLESS BURIED IN A PREVIOUSLY APPROVED BORROW LOCATION.
7. EACH BIDDER SHALL VISIT THE SITE OF THE PROJECT BEFORE SUBMITTING THE PROPOSAL FOR THIS WORK SO THAT HE WILL BE FULLY INFORMED OF THE EXISTING FIELD CONDITIONS AND THE OBSTACLES WHICH MIGHT BE ENCOUNTERED. UPON AWARD OF THE CONTRACT THE CONTRACTOR WILL NOT BE GRANTED ANY ADDITIONAL COMPENSATION WITH REGARDS TO TIME AND MONEY FOR CONDITIONS THAT MAY HAVE BEEN EVALUATED DURING ANY INSPECTION OF THE SITE.
8. FIELD LOCATE ALL EXISTING UTILITIES PRIOR TO BEGINNING ANY EXCAVATION WORK. CONTACT THE KANSAS-ONE-CALL SYSTEM AT 811 OR 687-2470 AT LEAST 72 HOURS IN ADVANCE TO REQUEST FIELD LOCATES. FOR UTILITIES THAT ARE NOT MEMBERS OF THE KANSAS-ONE-CALL SYSTEM, CONTACT THOSE COMPANIES DIRECTLY.
- THE CONTRACTOR MUST NOTIFY THE FOLLOWING IN CASE OF AN EMERGENCY:
- |                                   |              |
|-----------------------------------|--------------|
| COX COMMUNICATIONS                | 800-778-9140 |
| KANSAS GAS SERVICE                | 888-482-4950 |
| WESTAR ENERGY                     | 800-383-1183 |
| AT&T                              | 800-286-8313 |
| CITY OF WICHITA WATER DEPARTMENT  | 262-6000     |
| CITY OF WICHITA SEWER MAINTENANCE | 262-6000     |
9. THE LUMP SUM BID ITEM "SITE PREPARATION AND RESTORATION" SHALL INCLUDE, BUT NOT BE LIMITED TO CONSTRUCTION STAKING, MOBILIZATION, REMOVAL OF MINOR OBSTRUCTIONS, REMOVAL AND SALVAGE OF CONFLICTING PRIVATE IMPROVEMENTS WITHIN THE PROJECT AREA, MINOR SHAPING AND GRADING OF SLOPES FOR FINISHED APPEARANCE, REMOVAL OF CONSTRUCTION DEBRIS, REMOVAL OF TREES WITHIN CONSTRUCTION LIMITS, AND GENERAL CLEAN-UP.

10. THE CONTRACTOR SHALL BE RESPONSIBLE FOR PRESERVING PROPERTY IRONS. THE CONTRACTOR WILL BE REQUIRED TO RE-ESTABLISH ANY PROPERTY IRONS WHICH ARE DAMAGED OR DESTROYED BY THE CONTRACTOR CONSTRUCTION OPERATIONS, OR WHICH ARE COVERED BY 12" OR MORE OF FILL MATERIAL BY THIS PROJECT. SUCH IRONS SHALL BE RE-ESTABLISHED BY A LICENSED LAND SURVEYOR IN ACCORDANCE WITH STATE LAWS AND AT NO ADDITIONAL COST TO THE CITY.
11. THE CONTRACTOR SHALL APPLY TEMPORARY SEED AND MULCH TO ALL UNPAVED AREAS DISTURBED BY HIS CONSTRUCTION OPERATIONS WITHIN 14 DAYS AFTER SUCH OPERATIONS CEASE IN ACCORDANCE WITH THE STANDARD SPECIFICATIONS. SEED SHALL BE ANNUAL RYE APPLIED AT THE RATE OF 4 LBS. PER 1,000 SQUARE FEET. MULCH SHALL BE PRAIRIE HAY APPLIED AT THE RATE OF 15 BALES PER ACRE. THIS WORK SHALL BE PAID FOR AT THE CONTRACT LUMP SUM PRICE BID FOR "TEMPORARY PROJECT SEEDING".
12. THE CONTRACTOR SHALL GIVE ALL PROPERTY OWNERS AND/OR TENANTS OF DEVELOPED PROPERTY ADJUTING THE CONSTRUCTION OF THIS PROJECT A MINIMUM OF 10 DAYS ADVANCE NOTICE PRIOR TO START OF CONSTRUCTION IN THE VICINITY OF THE AFFECTED PROPERTY.
13. THE CONTRACTOR SHALL REMOVE EXISTING ROAD SIGNS THAT INTERFERE WITH CONSTRUCTION. SIGNS DAMAGED THRU NEGLIGENCE OF THE CONTRACTOR SHALL BE REPLACED BY THE CONTRACTOR AT NO ADDITIONAL COST TO THE PROJECT.
14. CONTRACTOR SHALL SUPPLY, INSTALL, AND MAINTAIN CONSTRUCTION TRAFFIC CONTROL AS NECESSARY TO PROTECT THE TRAVELING PUBLIC. ALL TRAFFIC CONTROL DEVICES, AND THE INSTALLATION AND USE THEREOF, SHALL CONFORM TO THE REQUIREMENTS OF THE MANUAL ON UNIFORM TRAFFIC CONTROL DEVICES (MUTCD), LATEST EDITION. ALL DEVICES SHALL BE REFLECTORIZED. CONSTRUCTION TRAFFIC CONTROL SHALL BE SUBSIDIARY TO OTHER BID ITEMS OF WORK.
15. WATER FOR EARTHWORK SHALL BE CONSIDERED SUBSIDIARY TO "UNCLASSIFIED EXCAVATION".
16. PRIOR TO CONSTRUCTION, THE CONTRACTOR SHALL RE-ESTABLISH CONTROL POINTS AND BENCH MARKS AND VERIFY THEIR ACCURACY.
17. INLET HOOKUPS AND INLET PROTECTION SHALL BE BID PER EACH REGARDLESS OF INLET SIZE.
18. THE CONTRACTOR SHALL EXERCISE CAUTION WHILE WORKING IN THE VICINITY OF EXISTING IRRIGATION AND LANDSCAPING ITEMS. ANY REMOVAL, RELOCATION AND/OR REPLACEMENT OF LANDSCAPING ITEMS, SPRINKLER HEADS, IRRIGATION SYSTEMS OR OTHER PRIVATE IMPROVEMENTS THAT ARE IN DIRECT CONFLICT WITH CONSTRUCTION SHALL BE COORDINATED WITH THE ENGINEER. THE CONTRACTOR SHALL BE RESPONSIBLE FOR NOTIFYING THE PROPERTY OWNER OF ANY SUCH WORK, AND FOR REPAIRING ANY DAMAGE TO THE EXISTING PRIVATE IMPROVEMENTS RESULTING FROM CONSTRUCTION OF THE PROJECT. THE MATERIAL COST, LABOR COST AND ALL INCIDENTALS NECESSARY TO COMPLETE THIS WORK SHALL BE INCLUDED IN THE LUMP SUM PRICE BID FOR "SITE PREPARATION AND RESTORATION".
19. COORDINATE SEED OR SOD OF AREAS ADJACENT TO SIDEWALK WITH THE OWNER.

**CONTROL POINTS**

- Pt. No. 5005  
 N-385805.895978, E-2,371,579.631082  
 PK NAIL AT 19TH AND CHATEAU PARKWAY
- 3.00' N TO BACK OF NORTH EDGE OF ROLL CURB ON NORTH SIDE OF ROUNDABOUT AT 19TH AND CHATEAU PARKWAY
  - 5.50' S TO EDGE OF CONCRETE
  - 1.50' W TO CURB JOINT NORTH AND SOUTH
- Pt. No. 5006  
 N-386,306.326915, E-2,371,810.511367  
 NO. 4 REBAR
- 4.00' W TO EAST EDGE OF WEST SIDEWALK
  - 5.20' E TO BACK OF WEST CURB CHATEAU PARKWAY
  - 75.00' S TO @ OF GLENGATE CIRCLE TO THE EAST

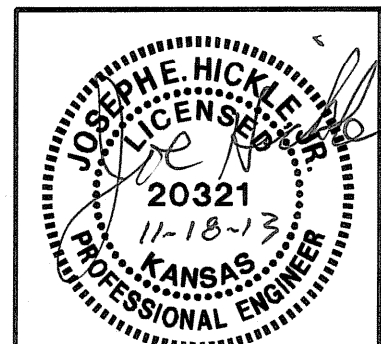
**BENCHMARK LIST**

- BM #18 - CHISELED SQUARE ON CENTER FACE OF CURB INLET ON WEST SIDE OF CHATEAU PARKWAY, 600' SOUTH OF 21ST STREET NORTH NEAR NORTHWEST CORNER GLENVIEW ADDITION.  
 ELEV. = 1379.13 NAVD88
- BM #3038 - BRASS DISC ON TOP OF WEST CURB OF CHATEAU PARKWAY, 165 FEET NORTH OF GLENVIEW CIRCLE.  
 ELEV. = 1384.60 NAVD88
- BM #21 - CHISELED SQUARE ON WEST SIDE OF CONCRETE BASE FOR LIGHT POLE ON EAST SIDE OF CHATEAU PARKWAY NEAR SOUTHWEST CORNER OF GLENVIEW ADDITION, 1200± SOUTH OF 21ST STREET NORTH.  
 ELEV. = 1390.30 NAVD88

**NOTE:**  
 CONTRACTOR SHALL NOT REMOVE ANY TREES FROM THE PROJECT SITE WITHOUT SPECIFIC APPROVAL OF THE OWNER AND/OR ENGINEER.

- Pt. No. 5007  
 N-386,514.205262, E-2,372,104.718538  
 NO. 4 REBAR WITH I.D. CAP "ALPHA CONTROL"
- 37.4' N TO NE CORNER OF SE END OF HEADWALL
  - 61.2' NE TO CENTER OF CHISELED SQUARE ON CURB INLET
  - 26.8' E TO BACK OF WEST CURB
  - 38.5' S TO CENTER OF MH ON CURB INLET AT 90° TURN IN CHATEAU PARKWAY WEST OF SOUTH NOSE OF MEDIAN CURB ISLAND
- Pt. No. 5008  
 N-387,057.908782, E-2,372,056.038731  
 NO. 4 REBAR IN OAK CREEK OFFICE PARK
- 12.0' S TO NORTH BACK OF CURB FOR PARKING STALLS IN-LINE WITH PARKING STALL STRIPE BETWEEN 3 STALLS WEST AND 3 STALLS EAST
  - NORTH OF EASTERN MOST PARKING STALLS
  - 68.0' SSW TO NE CORNER OF ELECTRIC PANEL BOX

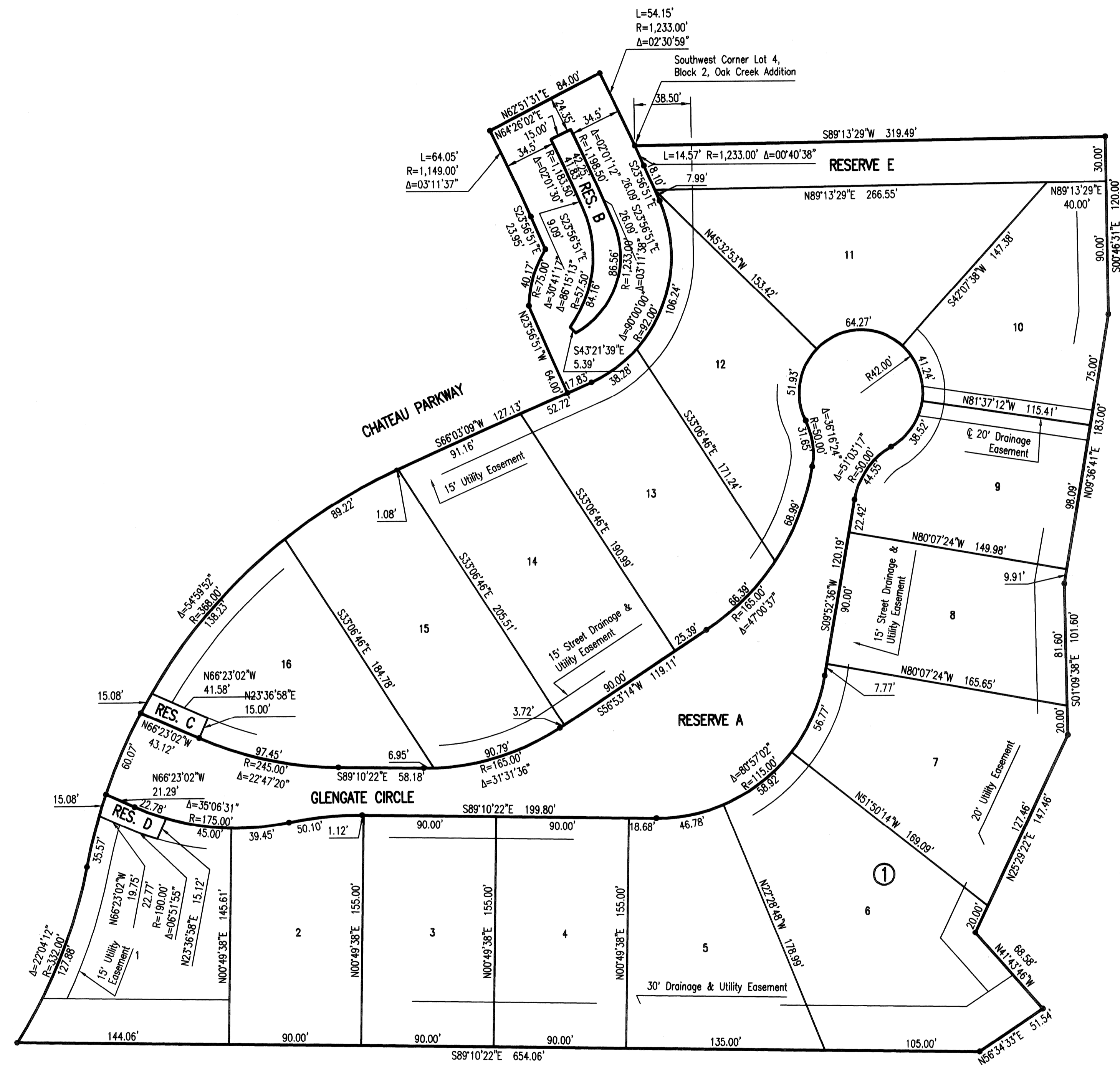
- Pt. No. 5009  
 N-387,116.064133, E-2,371,546.185265  
 NO 4 REBAR IN GRASS BUILDING PAD
- 94.5' N TO SOUTH CURB OF 21ST STREET NORTH
  - 106.0' ESE TO CENTER OF MH ON WEST SIDE OF PARKING LOT, IN GRASS, FOR OAK CREEK OFFICE PARK



No.	Revision	By	Date
	GLEN MEADOWS ADDITION SIDEWALK IMPROVEMENTS-CHATEAU PARKWAY		
<b>KEY MAP AND GENERAL NOTES</b>			
GARY JANZEN, P.E. - CITY ENGINEER PRIVATE PROJECT NO. 230 PPP			
<b>PEC</b> PROFESSIONAL ENGINEERING CONSULTANTS, P.A. 303 SOUTH TOPEKA WICHITA, KS 67202 316-262-2691 www.pec1.com			
Designed by	IDK	Job No. 35-13642-000	Sht. 02 of 5
Drawn by	CAE	Date	NOVEMBER 2013

# GLENVIEW

AN ADDITION TO WICHITA, SEDGWICK COUNTY, KANSAS



BLOCK	CITY DATUM	N.G.V.D.
1		
LOT 6	197.6	1385.0
LOT 7	191.6	1379.0
LOTS 8-10	191.6	1379.0

Correct City Datum Elev. = 191.6 per Affidavit/Certificate of Correction recorded at Film 2928, Page 6044 04/24/2012.

Saved 11-04-2013 2:29:41 PM by CAE  
 Plot Scale 1:118.87-2013 9:11:12 AM by CHRIS.EPP  
 G:\2013\13642\0001\3642-00-0242-PLA1

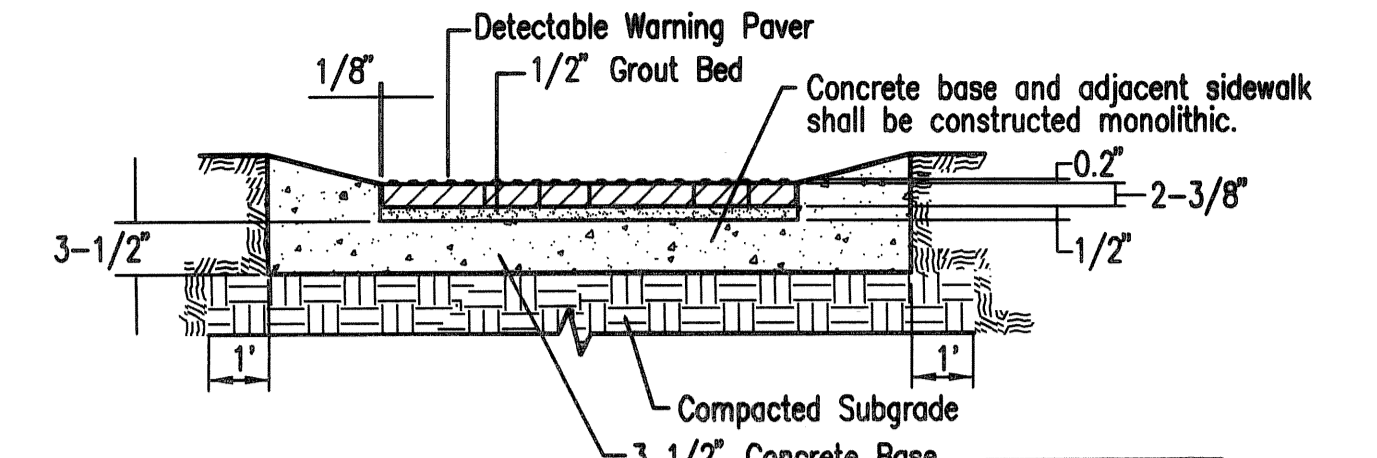
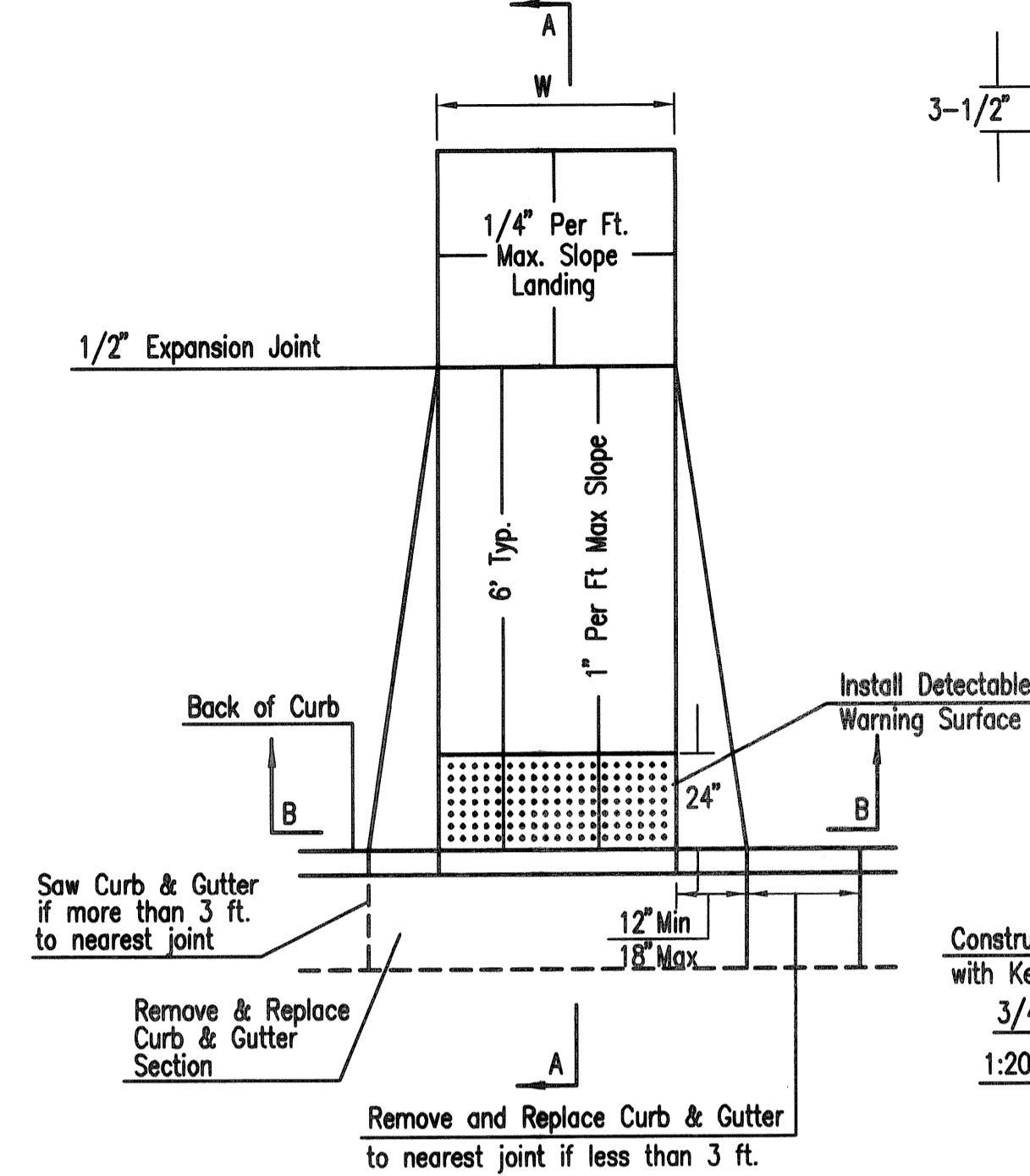
	Revision		By	Date
	<b>GLEN MEADOWS ADDITION</b> <b>SIDEWALK IMPROVEMENTS-CHATEAU PARKWAY</b> <b>PLAT</b>			
	GARY JANZEN, P.E. - CITY ENGINEER PRIVATE PROJECT NO. 230 PPP			
	<b>PEC</b> PROFESSIONAL ENGINEERING CONSULTANTS, P.A. 303 SOUTH TOPEKA WICHITA, KS 67202 316-262-2691 www.pec1.com			
Designed by	IDK	Job No.	35-13642-000	Sht. 03 of 5
Drawn by	CAE	Date	NOVEMBER 2013	



**GENERAL NOTES  
BRICK PAVEMENT**

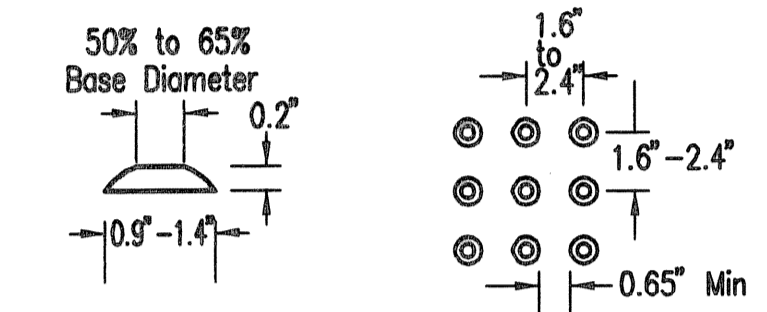
- CONCRETE PAVING BRICK SHALL BE 2 3/8" MIN. THICKNESS AND MEET OR EXCEED ASTM C-936-82. PAVING STONES TO BE "HOLLAND STONE" IN THE ANTIQUE RED COLOR AS MANUFACTURED BY PAVESTONE CO., OR APPROVED EQUAL. STONES SHALL BE LAID IN A HERRINGBONE PATTERN.
- SAND BEDDING SHALL MEET THE CITY'S REQUIREMENTS FOR FINE AGGREGATE. AN UNCOMPACTED SAND LAYING COURSE SHALL BE SPREAD EVENLY OVER THE AREA TO BE PAVED AND THEN SCREEDED TO A LEVEL OF APPROXIMATELY 1" THICKNESS. ONCE SCREEDED AND LEVELED TO THE DESIRED ELEVATION, THE SAND LAYING COURSE SHALL NOT BE DISTURBED IN ANY WAY.
- THE PAVING BRICK SHALL BE INSTALLED PERPENDICULAR AND PARALLEL TO THE MAJOR AXIS OF THE CROSSWALK OR AREA BEING PAVED. STONES SHALL BE PLACED WITH THE CHAMFERED SIDE UP, AND JOINT SPACES KEPT UNIFORM APPROXIMATELY 1/8" THICK. THE GAPS AT THE EDGE OF THE PAVED SURFACE SHALL BE FILLED WITH STONES CUT TO FIT. CUTTING SHALL BE ACCOMPLISHED TO LEAVE A CLEAN EDGE TOWARD THE TRAFFIC SURFACE, USING A MASONRY SAW. WHENEVER POSSIBLE, NO CUTS SHOULD RESULT WITH A PAVER LESS THAN ONE-THIRD OF ITS ORIGINAL DIMENSION.
- PAVING BRICK SHALL BE VIBRATED TO THEIR FINAL LEVEL IN THE SAND LAYING COURSE BY TWO OR THREE PASSES OF A VIBRATING COMPACTOR CAPABLE OF 3000 TO 5000 POUNDS COMPACTION FORCE WITH THE SURFACE CLEAN AND JOINTS OPEN.
- AFTER VIBRATION, CLEAN CONCRETE SAND SHALL BE SPREAD OVER THE PAVING STONE SURFACE, ALLOWED TO DRY, AND VIBRATED INTO JOINTS WITH ADDITIONAL PASSES OF THE PLATE VIBRATOR SO AS TO COMPLETELY FILL THE JOINTS. A LIGHT COATING OF SAND SHALL BE SWEEPED OVER THE COMPLETED SURFACE AND LEFT TO WEATHER IN.
- PLACEMENT AND COMPACTION OF SAND FOR INSTALLATION OF THE PAVING BRICK IS SUBSIDIARY TO THE PAVING BRICK ITEM. PLACEMENT OF THE 5" REINFORCED CONCRETE PAVEMENT UNDER ALL PAVING BRICK AREAS, INCLUDING THE 18" CONCRETE HEADER AT CROSS WALK SHALL BE INCLUDED IN THE UNIT PRICE BID PER SQUARE YARDS OF "CONCRETE BRICK PAVERS".

W = 4'-0" for Standard Ramp  
W = 5'-0" for Ramps at School Crosswalks  
(or to Match Existing)

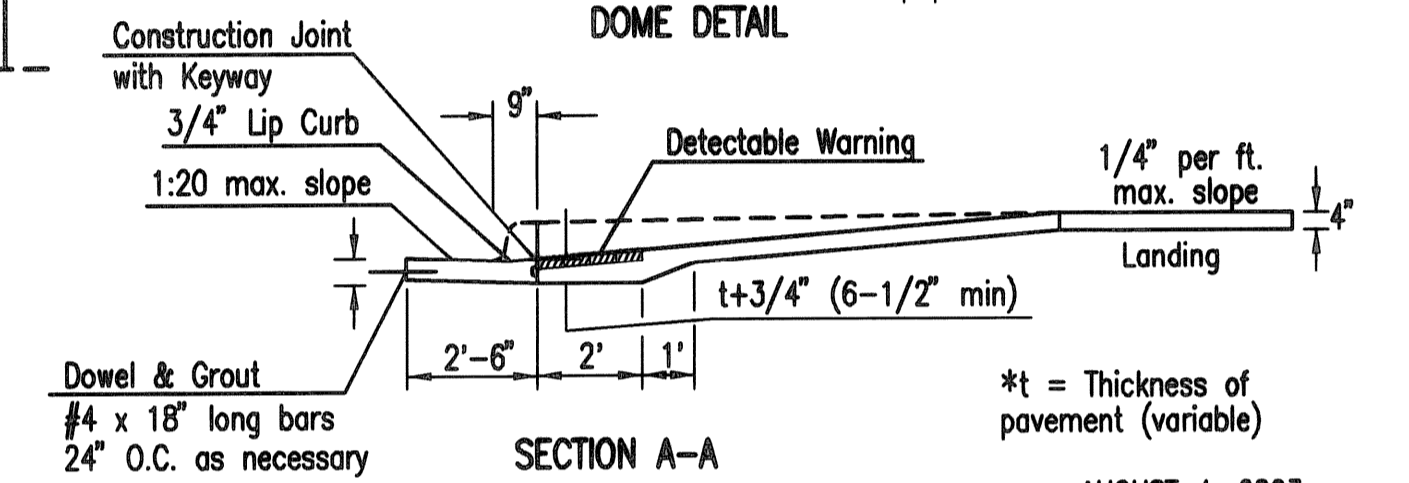


Typical Section Detectable Warning Paver  
NOTE: Ramps to comply with latest ADAAG guidelines. Pavestone Detectable Warning Pavers (or an approved equal) shall be used in all wheelchair ramps. The red paver shall be installed using a basket weave/parquet pattern. Other patterns may be used with approval of Engineer. Sand fill joints. Align domes in the direction of pedestrian travel.

SECTION B-B



DOME DETAIL

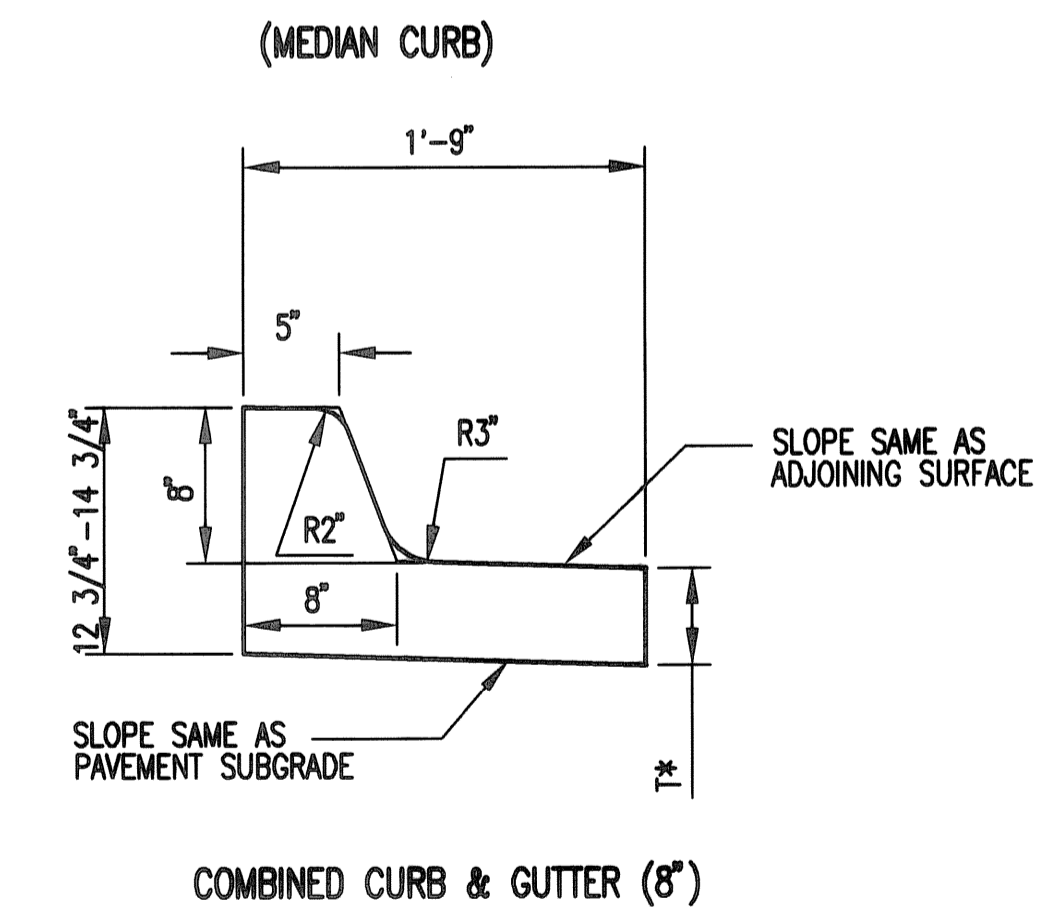


(TYPE A)

AUGUST 4, 2003

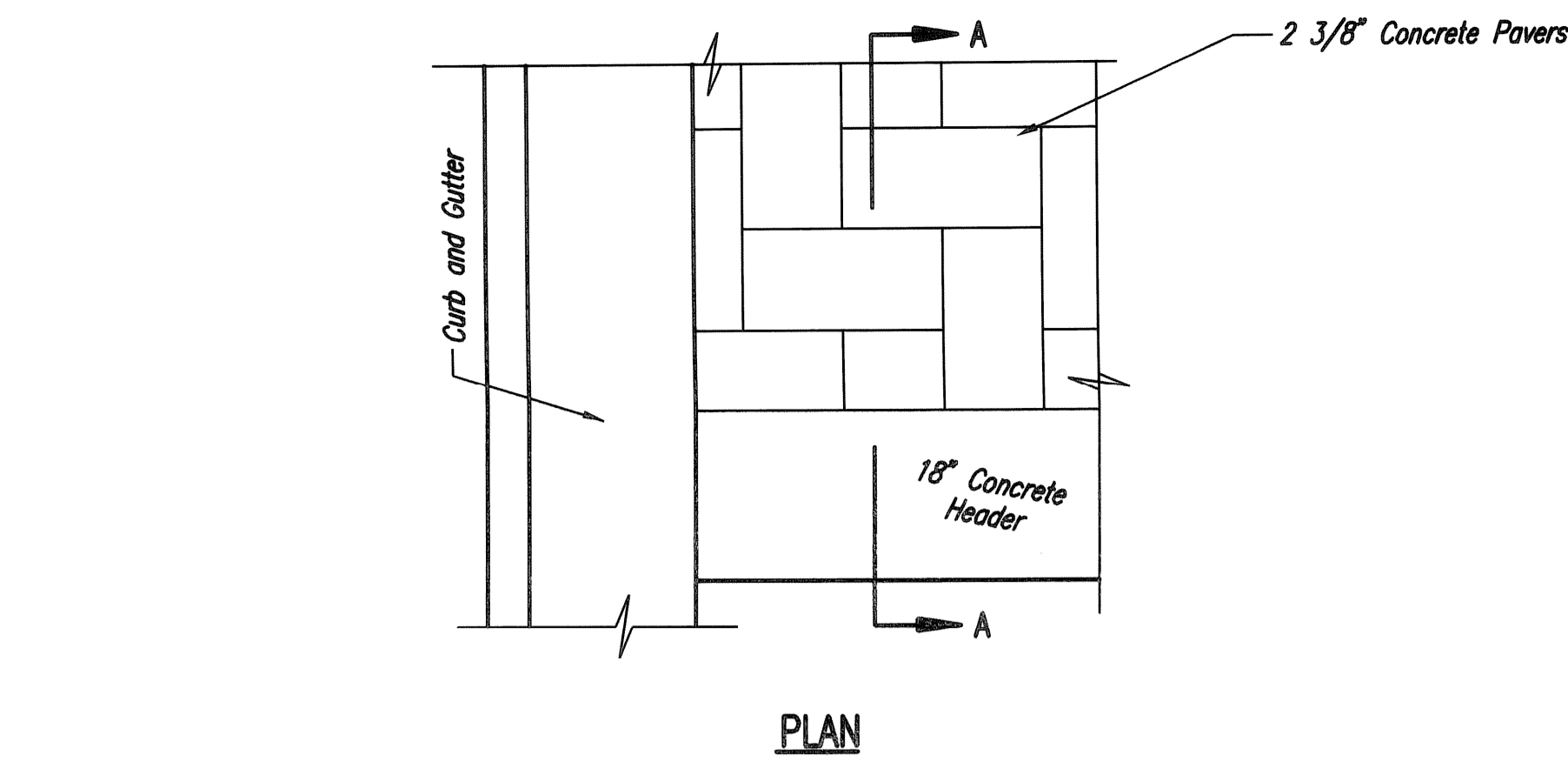
**STANDARD WHEELCHAIR RAMP**

WITH DETECTABLE WARNING  
CONSTRUCTION DETAIL FOR STREETS  
WITH COMBINED CURB & GUTTER

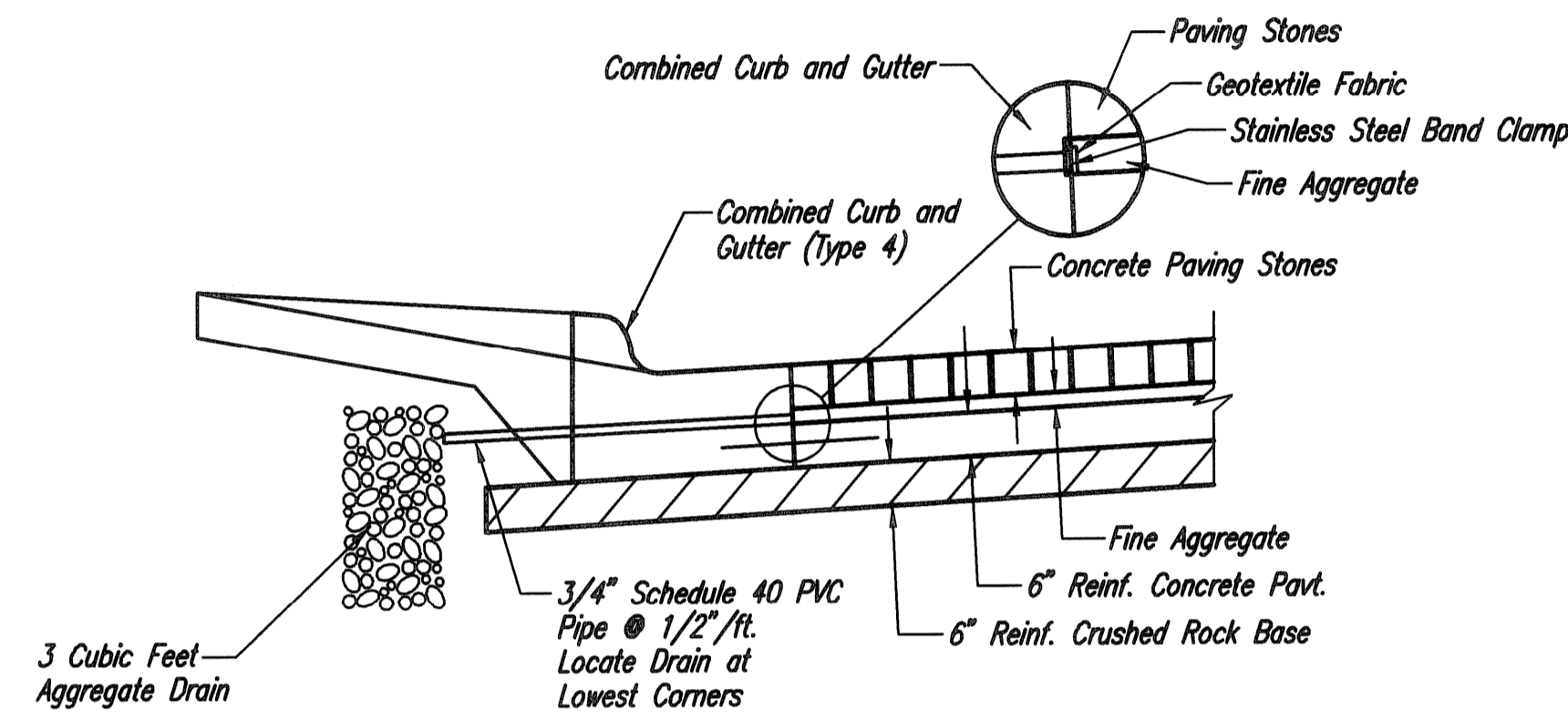


COMBINED CURB & GUTTER (8")

COMBINED CURB & GUTTER (6 5/8")

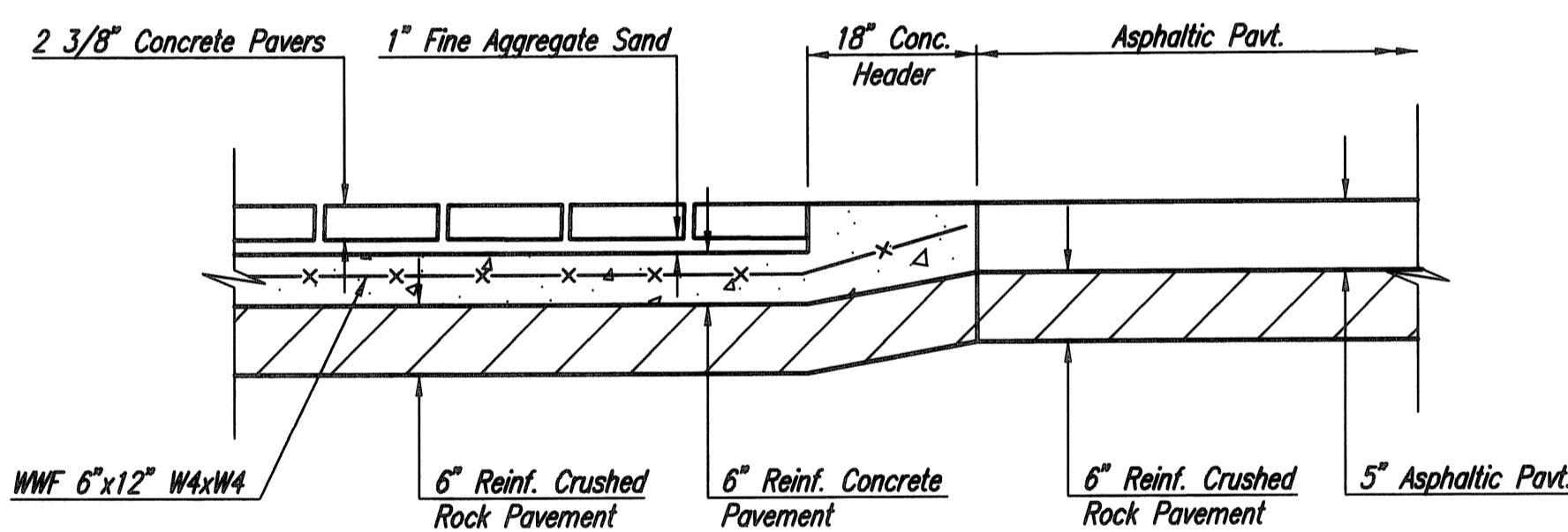


PLAN



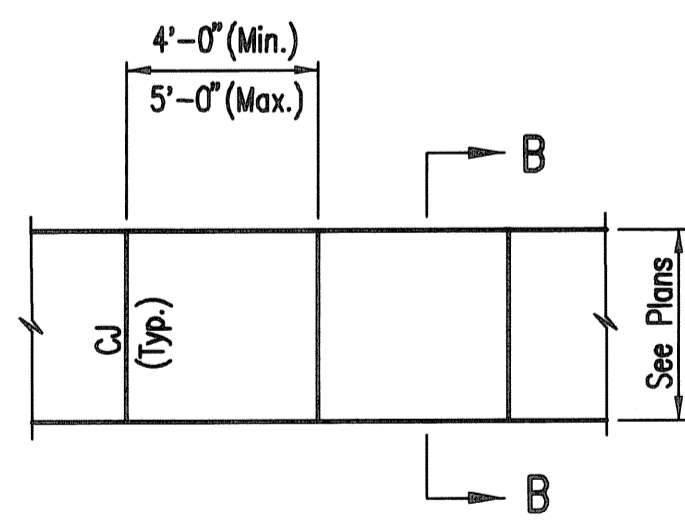
BRICK PAVEMENT DRAIN DETAIL

(4 Required)

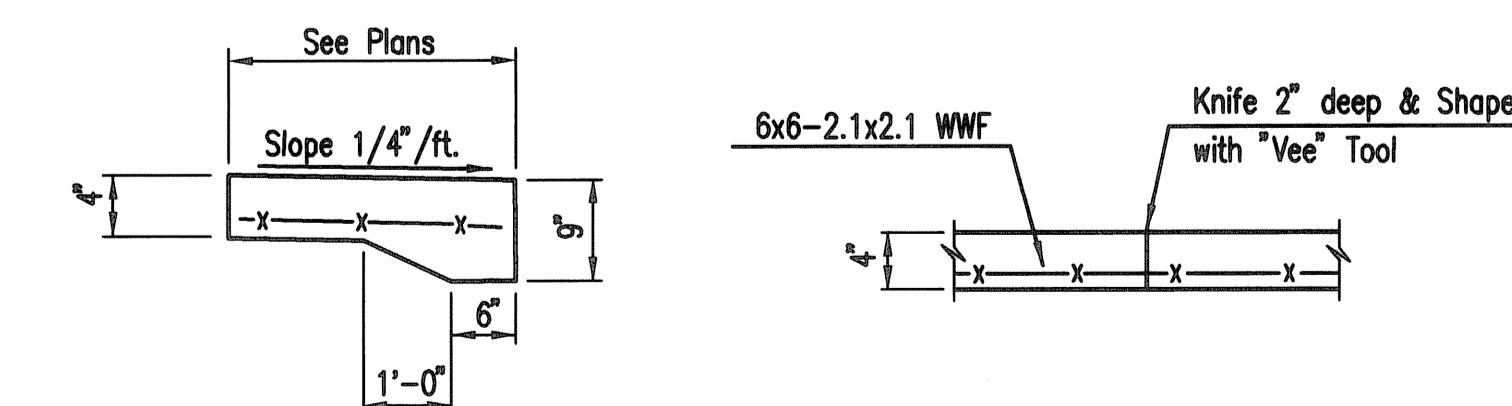


SECTION A-A THRU CROSS WALK

**CROSS WALK DETAILS**



PLAN

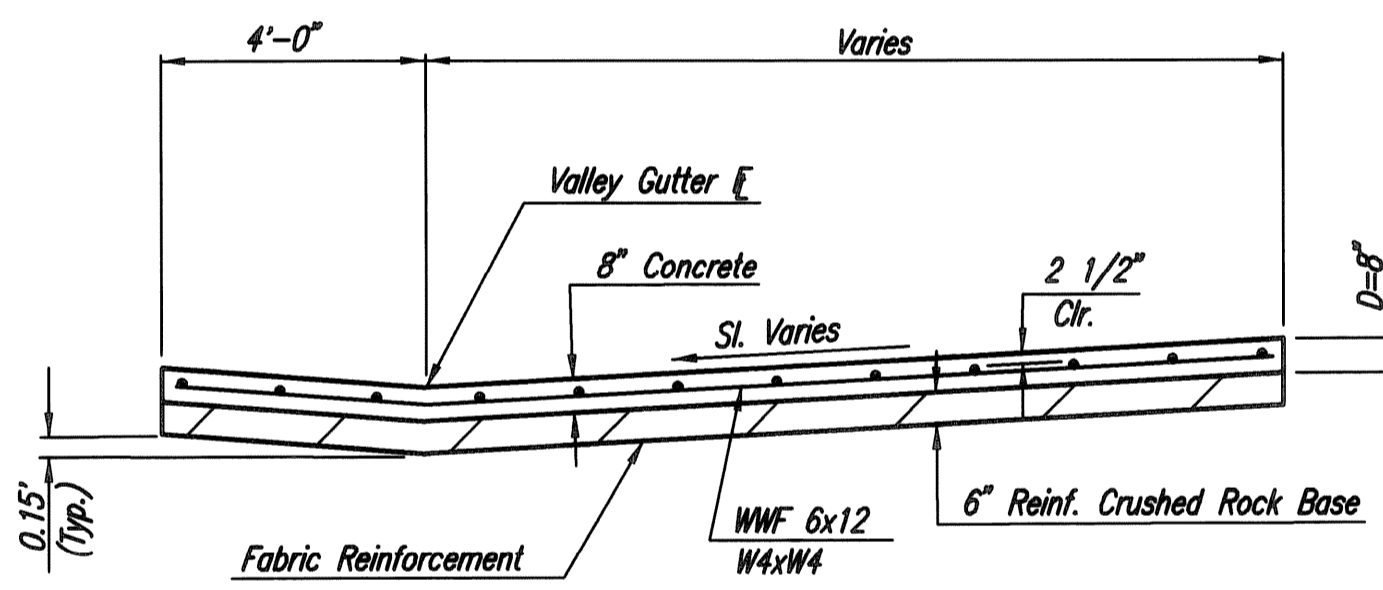


SECTION B-B

CONTRACTION JOINT (CJ)

Note: No sawn contraction joints will be allowed

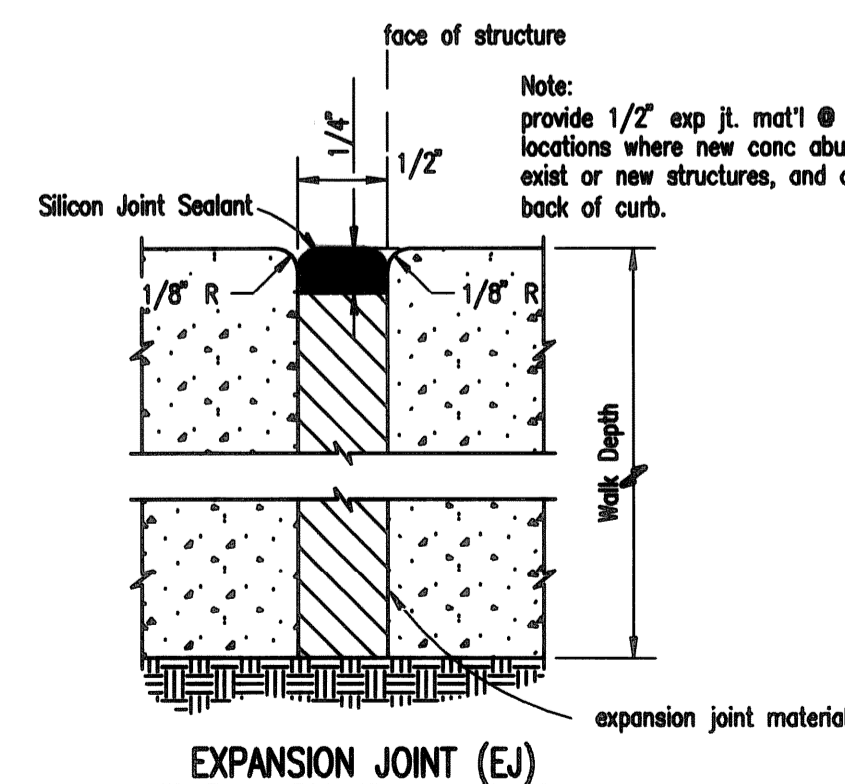
**SIDEWALK DETAILS**



VALLEY GUTTER DETAIL

NOTE: OMIT REINFORCING MESH AT ALL JOINTS

NOTE: ALL CONCRETE VALLEY GUTTER REINFORCEMENT SHALL BE ADEQUATELY SUPPORTED BY BAR CHAIRS IN THE REQUIRED POSITION UNLESS APPROVED OTHERWISE BY THE ENGINEER.



CONCRETE WALK JOINT DETAIL

Sheet 11-04-2013 2:30:05 PM by: PCE  
Plot Scale: 1:11-18-2013 9:10:51 AM by: CHRIS\_EPP  
0:\V\2013\13642\000\13642-000-056-DETAILS SHEET

	Revision		By	Date	
	GLEN MEADOWS ADDITION SIDEWALK IMPROVEMENTS-CHATEAU PARKWAY				
	<b>DETAILS SHEET-CHATEAU PKWY</b>				
	GARY JANZEN, P.E. - CITY ENGINEER PRIVATE PROJECT NO. 230 PPP				
		PROFESSIONAL ENGINEERING CONSULTANTS, P.A. 303 SOUTH TOPEKA WICHITA, KS 67202 316-262-2691 www.pec1.com			
Designed by	IDK	Job No.	35-13642-000	Sht.	05 of 5
Drawn by	CAE	Date	NOVEMBER 2013		