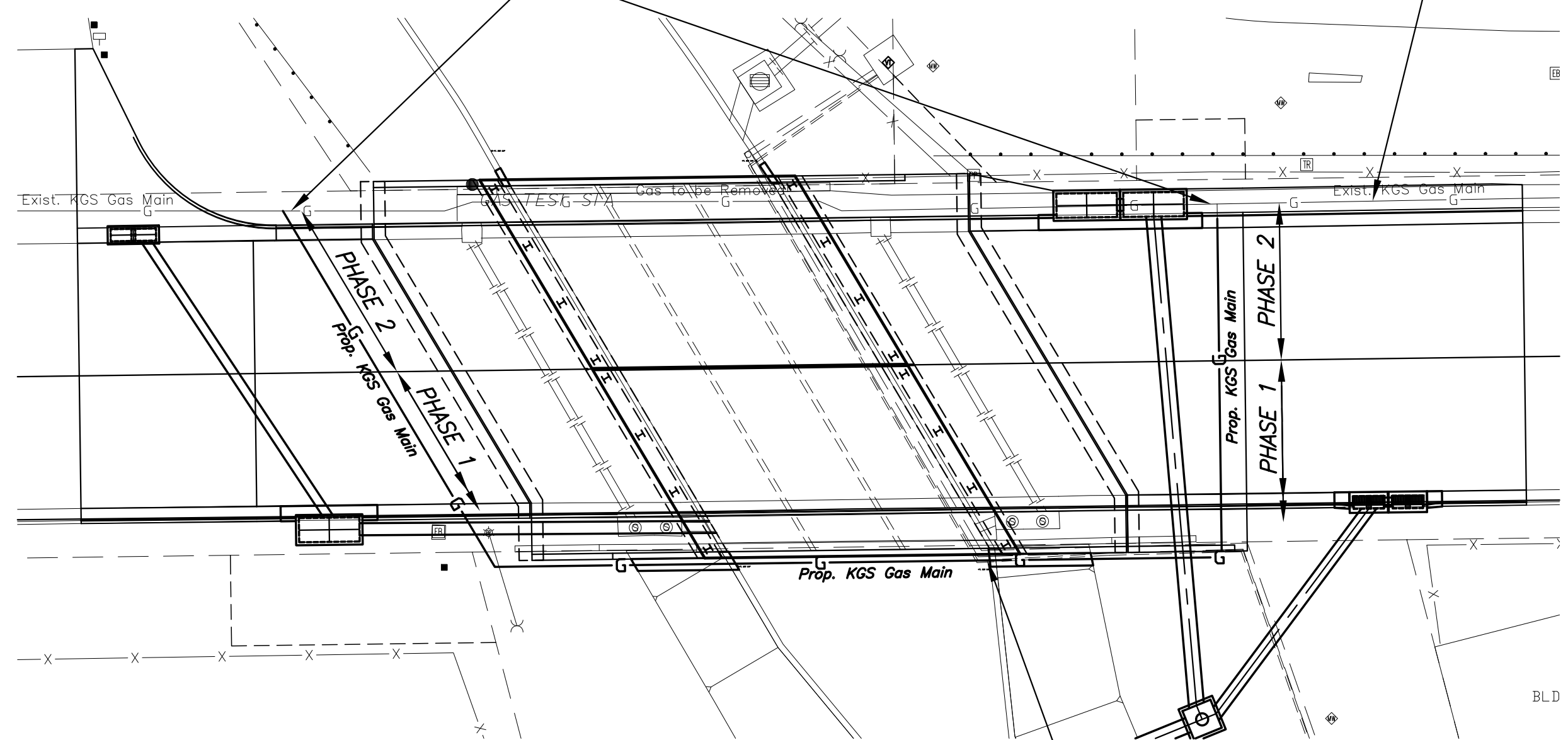


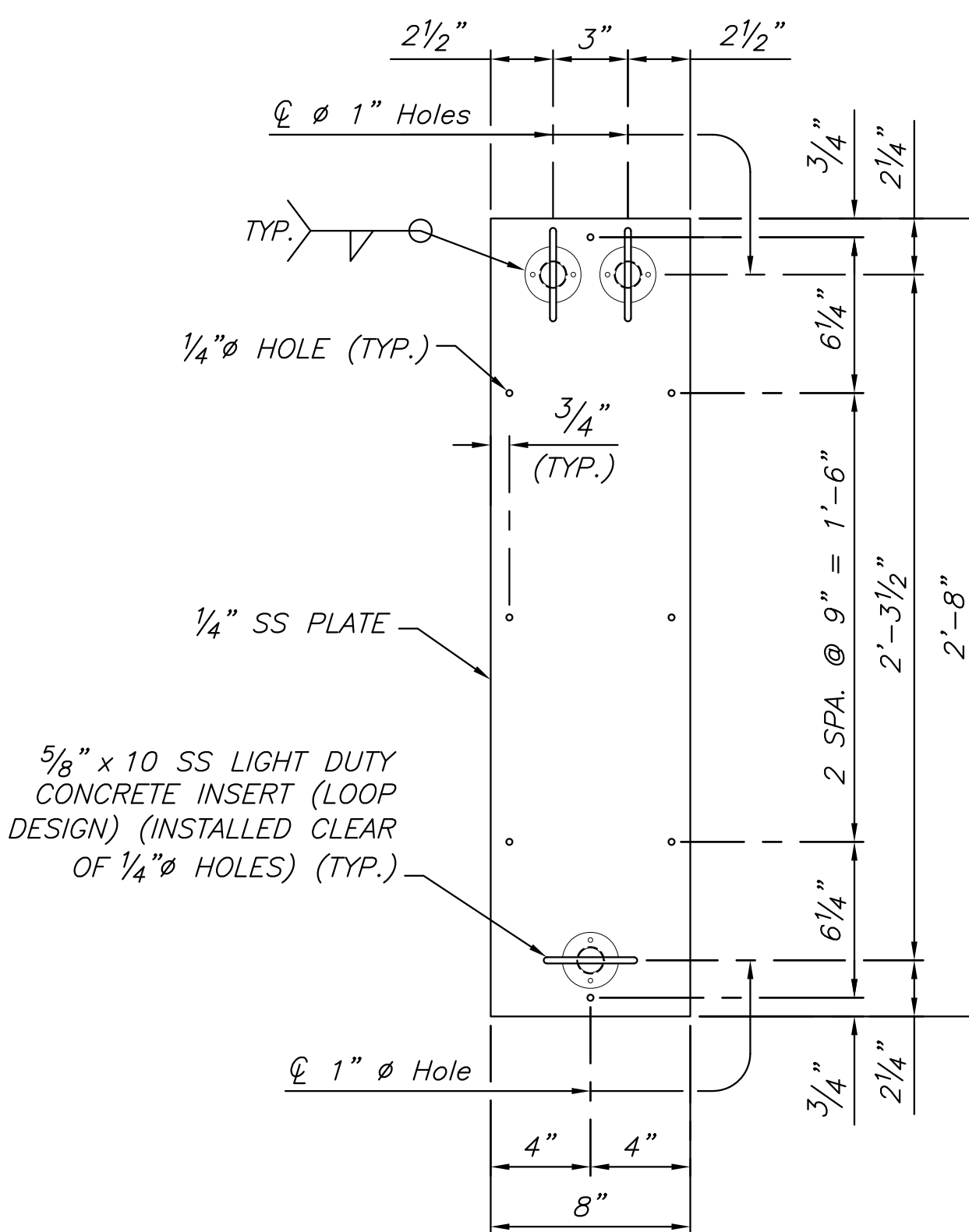
CONTRACTOR TO REMOVE THIS PORTION OF GAS LINE DURING PHASE 2, AFTER GAS LINE WORK IS COMPLETE AND PRIOR TO PARTIAL BRIDGE DEMOLITION

EXISTING GAS LINE TO REMAIN IN SERVICE DURING PHASE 1 CONSTRUCTION.

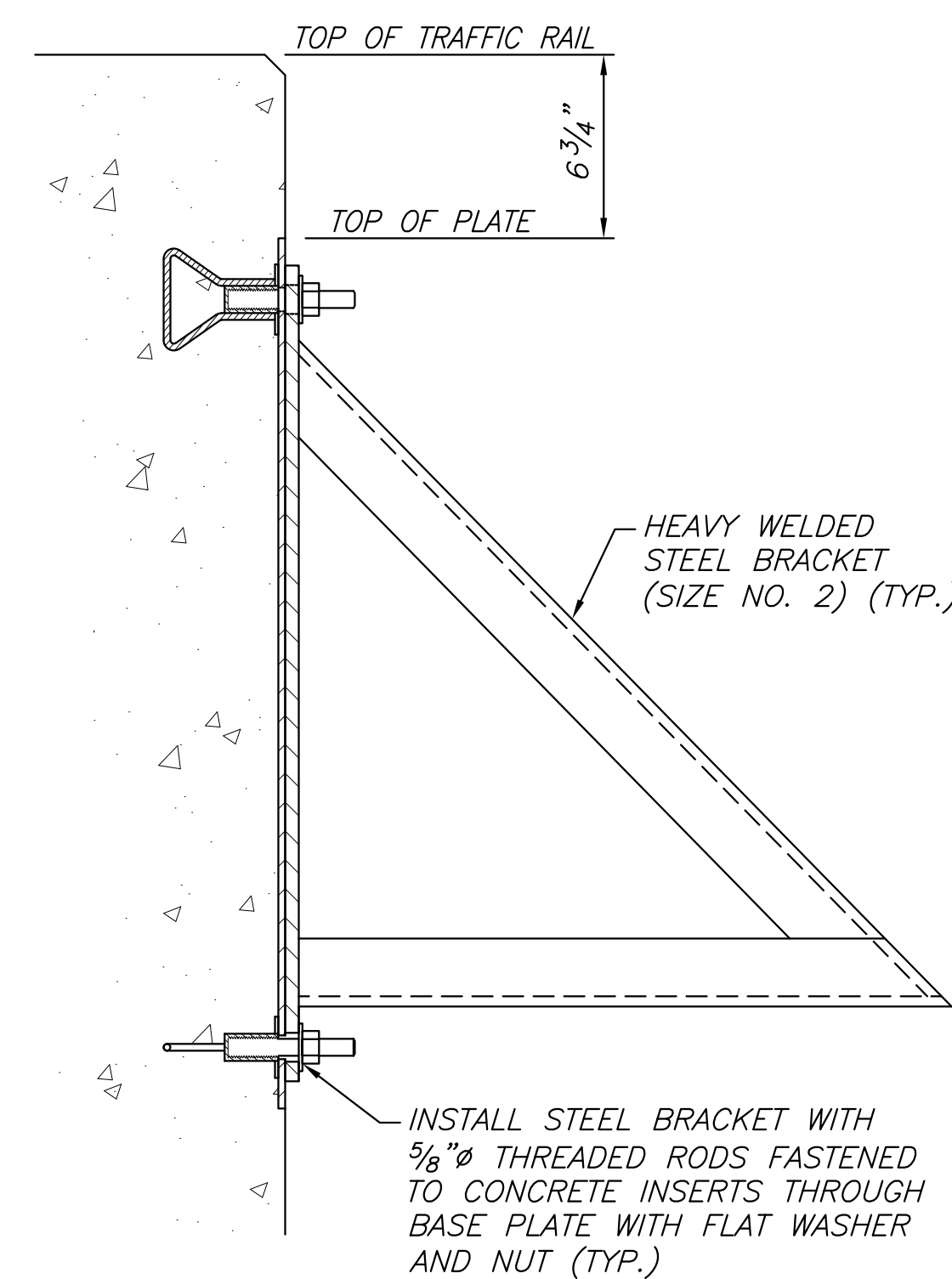


GAS LINE INSTALLATION PLAN

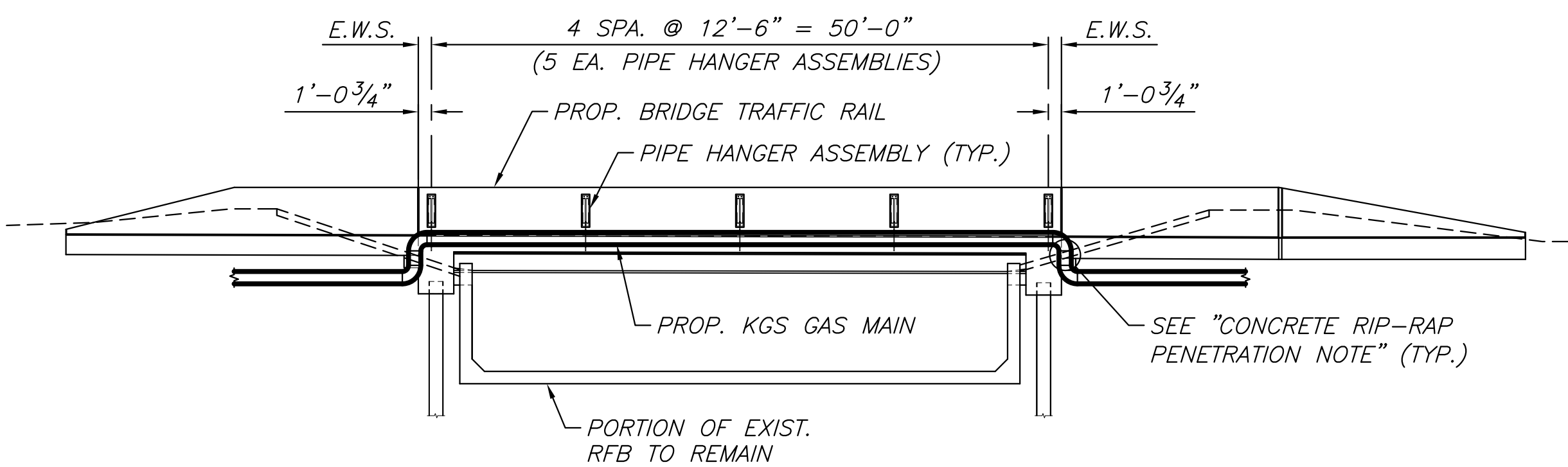
GAS LINE INSTALLATION TO OCCUR IN PHASES AS REQUIRED TO ACCOMMODATE BRIDGE CONSTRUCTION. SEE CONSTRUCTION SEQUENCE SUMMARY (SHEET 68).



PLAN - BASE PLATE
(5 REQUIRED)



COMPLETE SECTION
(ALONG Q PIPE HANGER ASSEMBLY)



ELEVATION

SCALE: 1" = 10'

CONCRETE RIP-RAP PENETRATION NOTE:

FOLLOWING COMPLETION OF GAS MAIN INSTALLATION, CONTRACTOR SHALL WRAP ALL PIPE SURFACES EXPOSED TO CONCRETE WITH TWO LAYERS OF 1/2" FIBER EXPANSION MATERIAL AND SECURE TO THE PIPE PRIOR TO CASTING CONCRETE RIP-RAP.

NOTES:

1. BASE PLATE AND HEAVY WELDED STEEL BRACKET MATERIAL SHALL BE TYPE 304 STAINLESS STEEL.
2. LIGHT DUTY CONCRETE INSERT (LOOP DESIGN) MATERIAL SHALL BE TYPE 316 STAINLESS STEEL.
3. THE BASE PLATE SHALL BE AFFIXED TO CONCRETE FORMS USING 1/4" HOLES IN THE BASE PLATE AND CAST INTO TRAFFIC RAILS AS SHOWN ABOVE.
4. KANSAS GAS SERVICE WILL PROVIDE ALL LIGHT DUTY CONCRETE INSERTS AND HEAVY WELDED STEEL BRACKETS REQUIRED FOR INSTALLATION OF PIPE HANGER ASSEMBLIES.
5. KGS GAS MAIN PIPE AND ADDITIONAL HARDWARE INSTALLATION BY OTHERS.
6. WORK ASSOCIATED WITH INSTALLING PIPE HANGER INSERTS, BRACKETS, AND BASE PLATES SHALL BE INCLUDED IN THE BID ITEM "PIPE HANGER ASSEMBLY". ALL COORDINATION WITH KANSAS GAS SERVICE AND THEIR CONTRACTOR SHALL BE SUBSIDIARY TO THIS BID ITEM.
7. WRAPPING GAS PIPE WITH FIBER EXPANSION MATERIAL AT CONCRETE RIP-RAP PENETRATIONS SHALL BE SUBSIDIARY TO "RIP-RAP, REINFORCED CONCRETE 6".
8. REMOVAL OF GAS LINE SHALL BE SUBSIDIARY TO "REMOVAL OF EXISTING STRUCTURES".

J:\PROJECTS\2013\1301040546_21ST BRIDGE AT DERBY REFINERY\CIVIL\GAS\UTIL\3548UP01.DWG