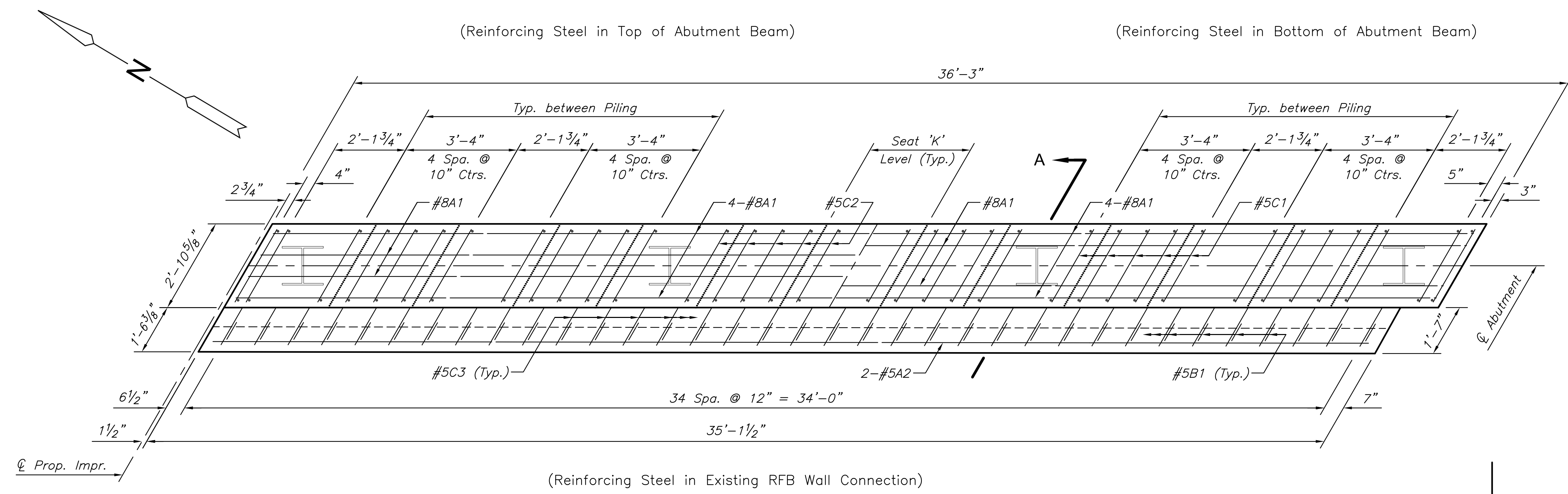


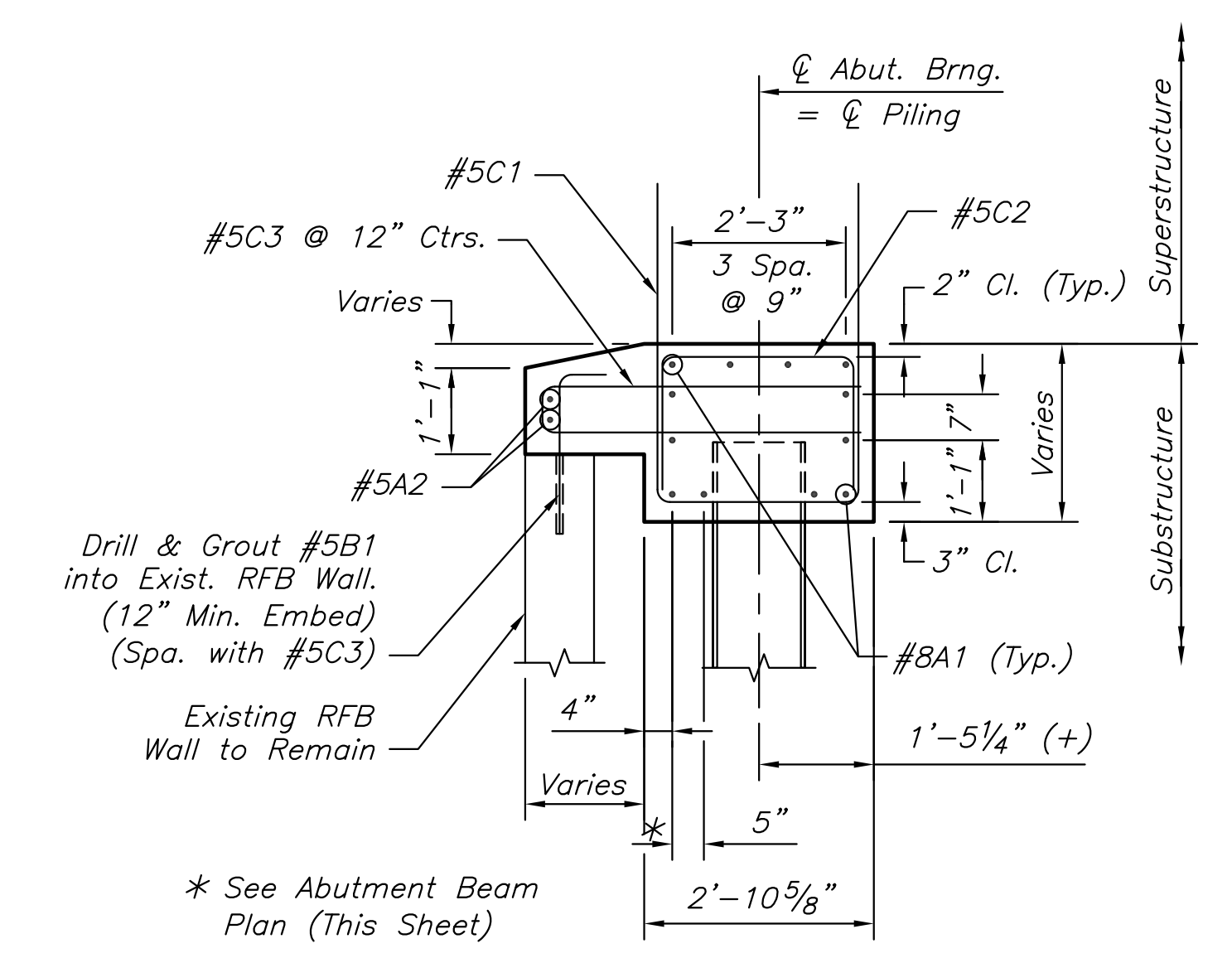
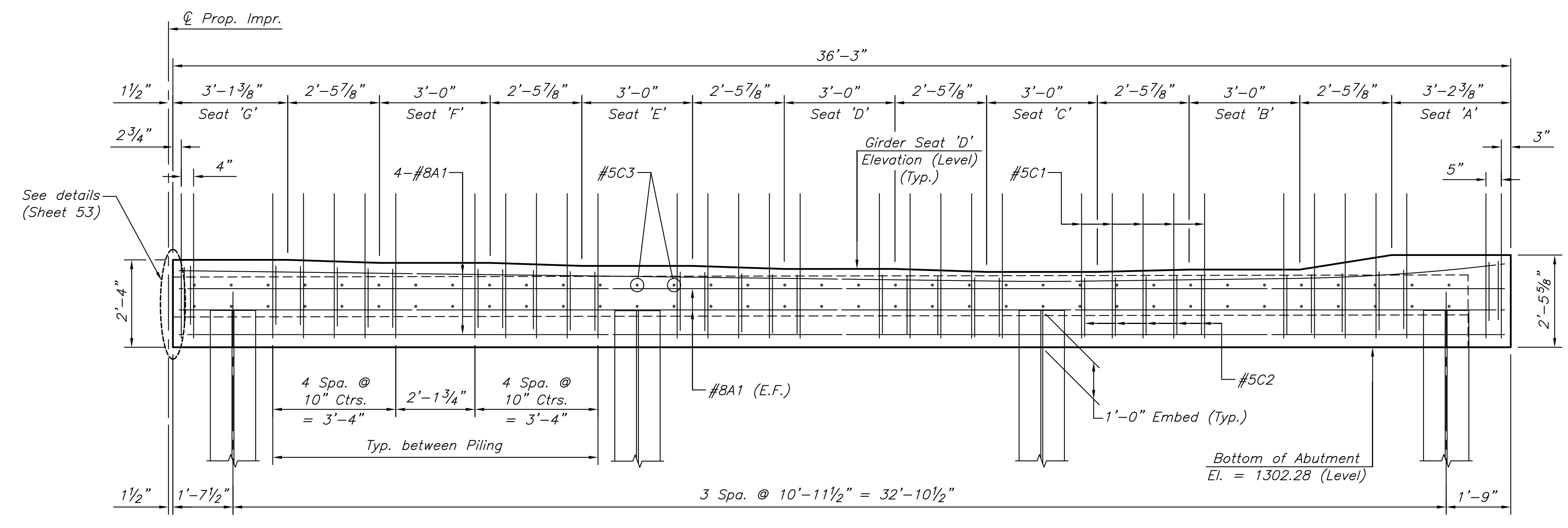
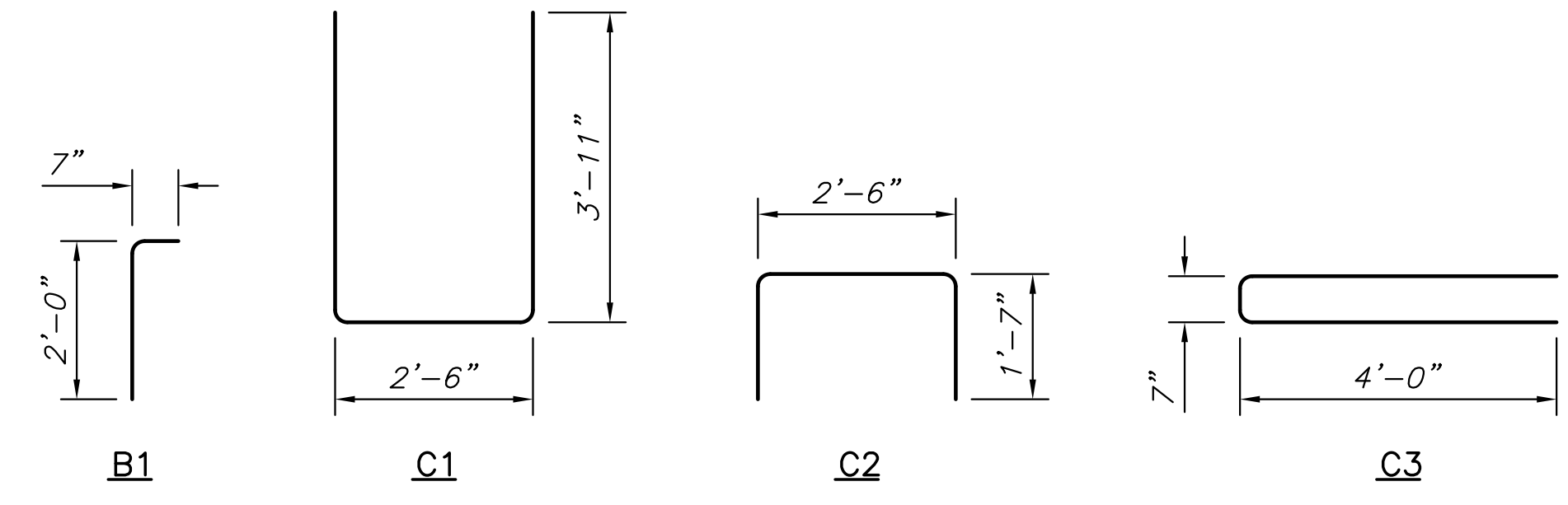
PLOT/EC: Tuesday, July 21, 2015 @ 10:18AM

CONSTRUCTION PLANS FOR  
**21ST STREET BRIDGE AT DERBY REFINERY**  
WICHITA, KANSAS



BILL OF REINFORCING STEEL (One Abutment Beam Shown)						
Epoxy Coated, Grade 60						
$\Delta$ See Bending Diagram						
Bar	A1	A2	$\Delta$ B1	$\Delta$ C1	$\Delta$ C2	$\Delta$ C3
No.	12	2	35	34	34	35
Size	#8	#5	#5	#5	#5	#5
Length	35'-10"	34'-6"	2'-7"	10'-4"	5'-8"	8'-7"

TABLE OF ELEVATIONS	
$\varnothing$ Brng. Elevation	
Seat	Abut. No. 2
A	1304.75
B	1304.35
C	1304.28
D	1304.36
E	1304.44
F	1304.53
G	1304.61



©2013 MKEC Engineering All Rights Reserved www.mkec.com  
These drawings and their contents, including, but not limited to, all concepts, designs, & ideas are the exclusive property of MKEC Engineering (MKEC), and may not be used or reproduced in any way without the express consent of MKEC.

**PHASE 1 BRIDGE ABUTMENT NO. 2 BEAM DETAIL**

PROJECT NO.	87 N-0612-01	
DATE	JULY 2015	
SCALE	NO SCALE	
DESIGNED	DRAWN	CHECKED
KJS	DMU	KJS

NO.	REVISION	DATE