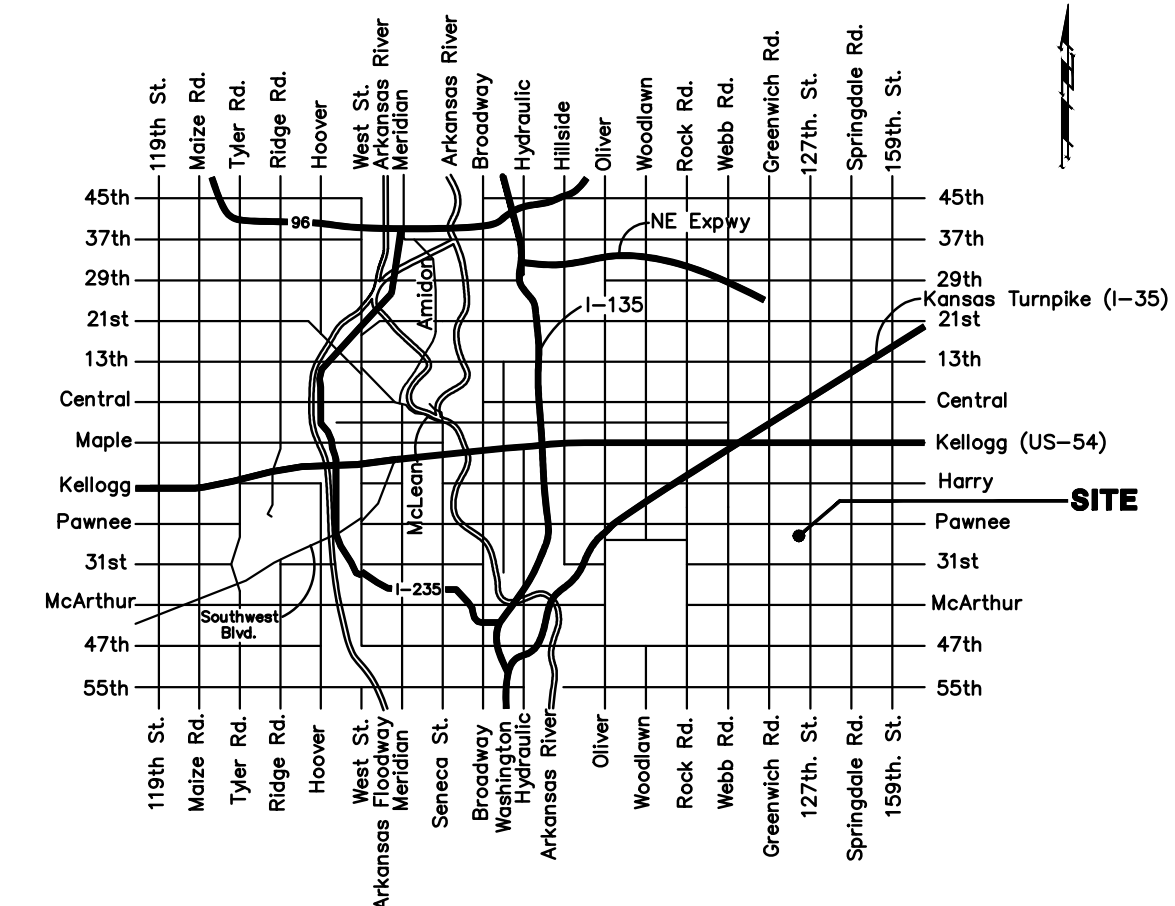
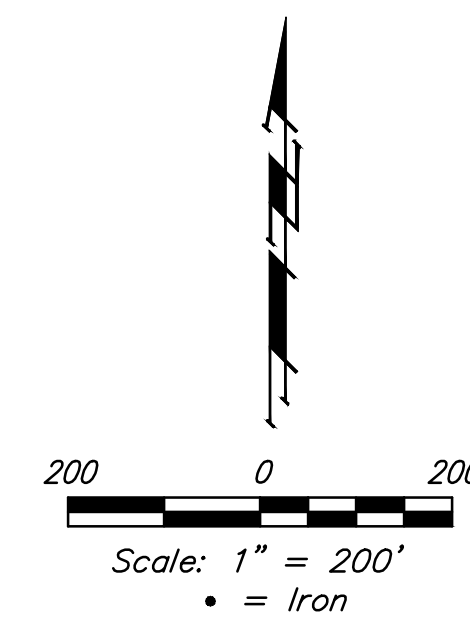
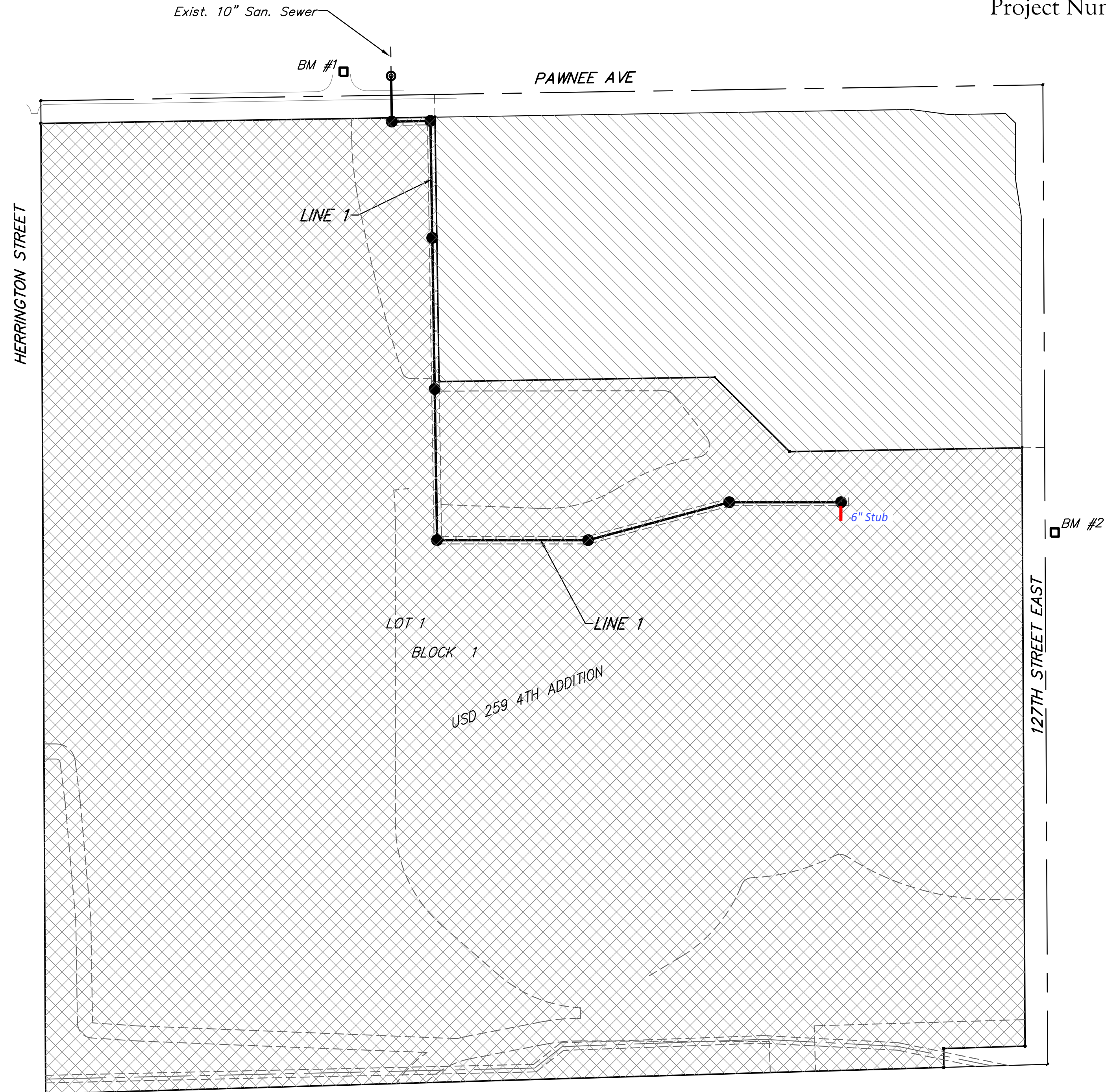


Lateral 426, Four Mile Creek Sewer
 Lateral 442, Four Mile Creek Sewer
SANITARY SEWER IMPROVEMENTS
 to serve
USD 259 4TH ADDITION
 CITY OF WICHITA, KANSAS
 Gary Janzen, P.E. City Engineer
 Project Number 468 -84707 O.C.A. Number 744378
 Project Number 468 -84994 O.C.A. Number 744376

McCullough Excavation - Contractor
 J. Wagner - City of Wichita, Field Project Engineer
 K. Yale - City of Wichita, Inspector
 As-built
 Stub
 Release Date: 5/12/2015
 :pdf ARosas 9/28/2015



VICINITY MAP



BENCHMARKS

Benchmark #1:
 Chiseled square on top of
 median at the entrance of Casa
 Bella Addition.
 Elevation = 1354.46 (NAVD88)

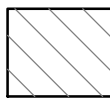

Benchmark #2:
 Railroad spike in west face of
 power pole located approximately
 1185± south of the intersection
 of Pawnee and 127th Street
 East and approximately 26±
 east of the centerline of 127th
 Street East
 Elevation = 1362.34 (NAVD88)

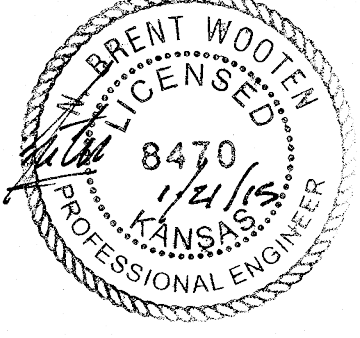
SHEET INDEX

Title Sheet	1
Line 1	2-4
Erosion Control Plan	5
Coordinate Sheet	6
Erosion Control BMP Details	7-10
Standard Manhole Detail	11
Ring & Cover Detail	12
Copy of Plat	13

GENERAL NOTES:

- Contractor will be required to provide notice to utility companies a minimum of forty-eight (48) hours prior to any excavation, as follows:
 Kansas One-Call 687-2470
 The Contractor must notify the following in case of an emergency:
 Cox Communications 262-4270
 Kansas Gas Service 1-888-482-4950
 Westar Energy 383-8650
 Aquila Energy 1-800-303-0357
 AT&T 268-2245
 City of Wichita Water Dept. 268-4563
 City of Wichita Sewer Maint. 268-4024
 City of Wichita Storm Sewer Maint. 268-4090
 City of Wichita Traffic Maint. 268-4034
 Conoco Phillips Pipeline Co. 1-877-267-2290
 Southern Star Pipeline Co. 529-6600
 Kinder-Morgan Pipeline Co. 1-888-844-5658
- Utility service lines, poles, valve boxes, meters, and etcetera are to be adjusted as necessary by others prior to construction unless the plans specifically call for their adjustment by the Contractor or unless the plans specifically identify a utility to be adjusted by its owner during construction. Existing utilities and their location, as shown on the plans, represent the best information obtainable for design. The Contractor will be required to work around existing utilities within the right-of-way which do not conflict with proposed construction.
- Rubble from the removal of miscellaneous structures and excess excavation which is to be wasted shall be disposed of on sites to be provided by the Contractor. These sites shall be approved by the Engineer as to suitability, appearance and site location. Locations, in the opinion of the Engineer, that will leave an unsightly appearance will not be approved. All disposal sites must be approved by the Kansas Department of Health and Environment. Material either stockpiled or disposed of in a flood plain would require a Kansas State Board of Agriculture permit. Any material dumped in waters of the United States or wetlands is subject to U.S. Corps. of Engineers permitting regulations. Any material buried or stockpiled beyond approved construction limits would require additional archaeological investigations unless buried in a previously approved borrow location.
- Trees and shrubs in public right-of-way which are in direct conflict with proposed new construction shall be removed by the Contractor with the Engineer's approval. Trees and shrubs which are not in direct conflict with proposed new construction shall be saved and protected from damage.
- The Contractor shall give all property owners and/or tenants of developed property abutting the construction of this project a minimum of ten (10) days notice prior to start of construction.
- The Contractor shall be responsible for preserving property irons. The Contractor will be required to re-establish any property irons which are damaged or destroyed by his construction operations. Such irons shall be re-established by a licensed land surveyor in accordance with state laws.
- All existing and proposed erosion control measures including silt fencing, erosion control mat, straw bales, inlet barriers, and const. entrance shall be maintained throughout construction by the contractor and until project is accepted by the City of Wichita. The on-site engineer shall complete weekly reports on the status of erosion control measures. The contractor shall be required to comply with maintenance and/or replacement of erosion control measures as determined by the on-site engineer until project is accepted by City of Wichita. Maintenance and/or replacement of erosion control measures to be paid by L.S. bid item "Maintain Existing BMP's."
- All excess excavation shall remain on-site and shall be stockpiled or spread at a location determined by the engineer.
- The Contractor shall be responsible for maintaining continuous flow of sewage through construction. Contractor's proposed method for maintaining sewage flow shall be approved by the Engineer. Cost of maintaining flow of sewage through construction will not be paid for directly and this cost shall be considered as subsidiary to the other pay items of work.
 Seed: Ryegrass: 5 lbs./1000 sq. ft.
- All costs associated with seeding shall be included in bid item "Seeding". All seeding operations shall conform to City of Wichita Standard Specifications.

Proj. 468-84707 Benefit District 
 Proj. 468-84994 Benefit District 

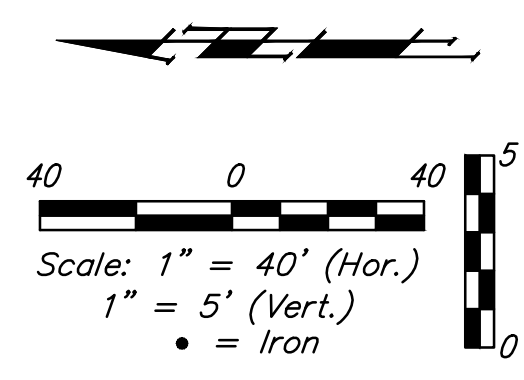
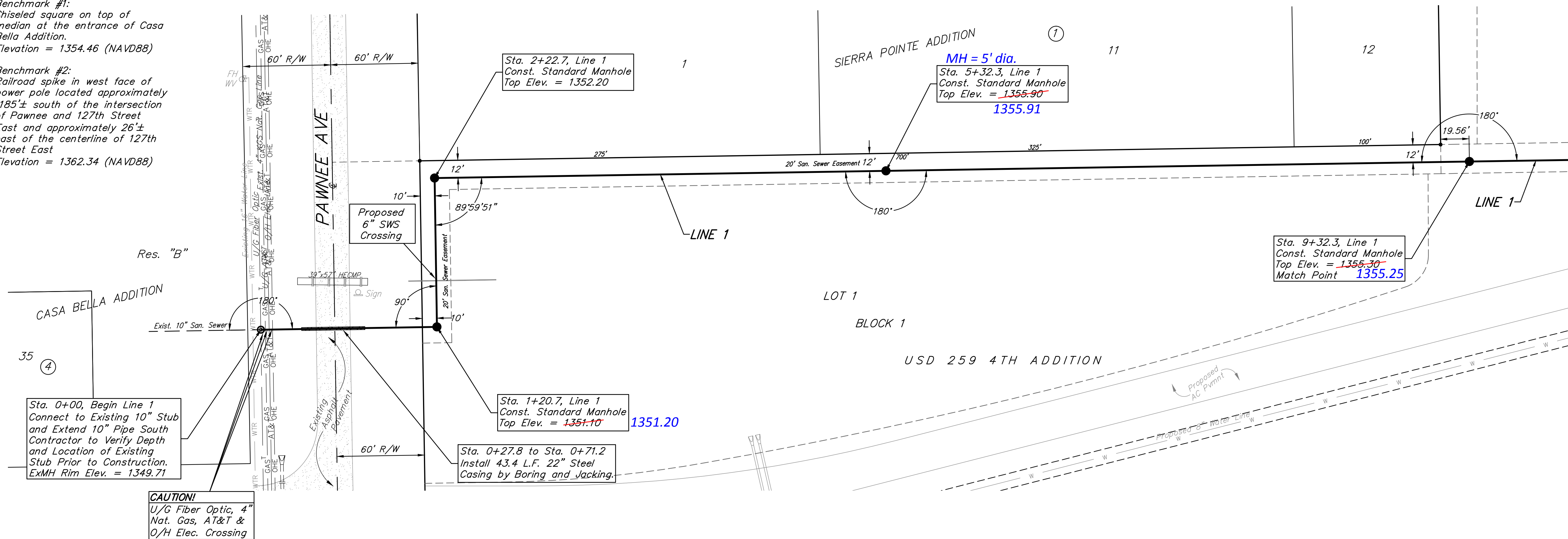


Baughman
 Baughman Company, P.A. 315 Ellis St. Wichita, KS 67211 P 316-262-7271 F 316-262-0149
 ENGINEERING | SURVEYING | PLANNING | LANDSCAPE ARCHITECTURE

BENCHMARKS

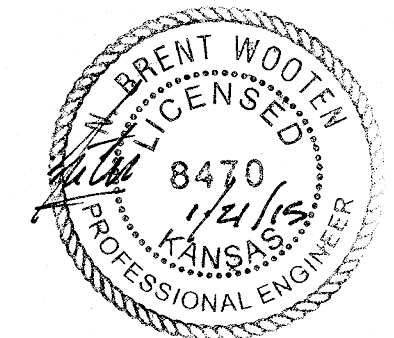
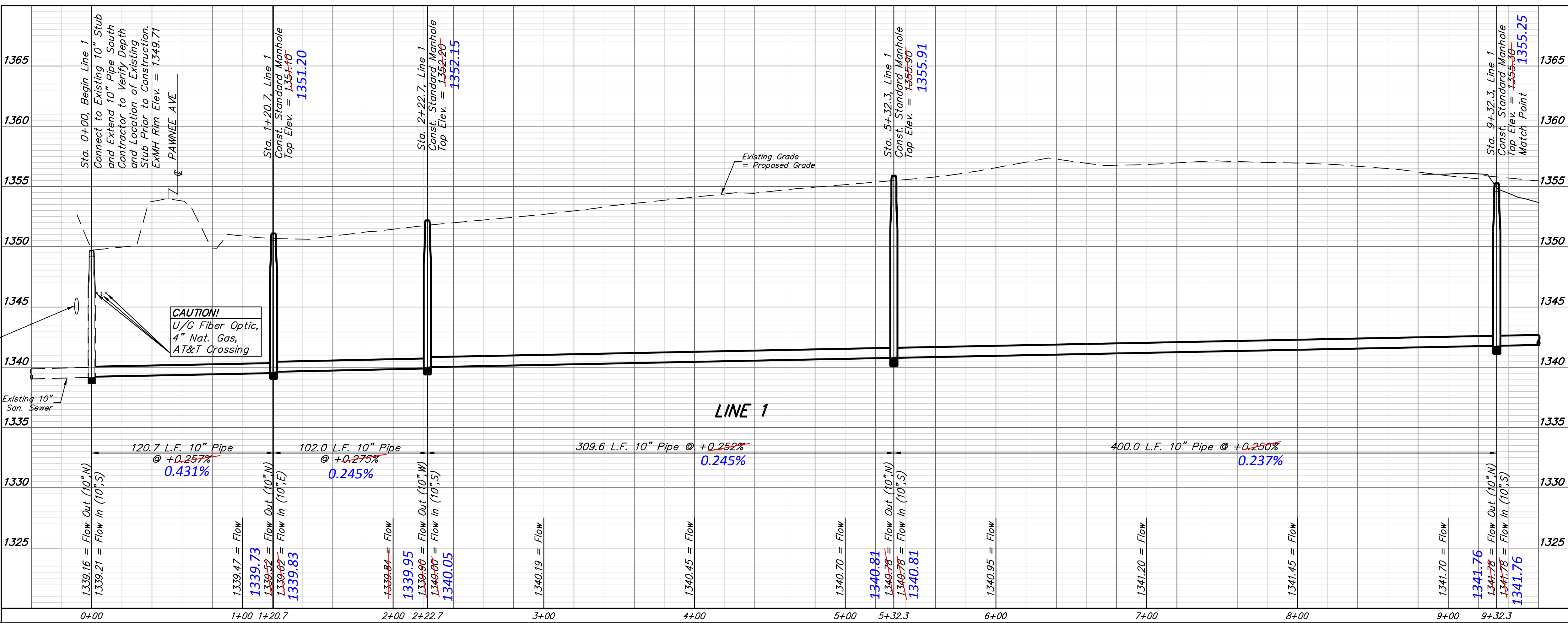
Benchmark #1:
Chiseled square on top of median at the entrance of Casa Bella Addition.
Elevation = 1354.46 (NAVD88)

Benchmark #2:
Railroad spike in west face of power pole located approximately 1185± south of the intersection of Pawnee and 127th Street East and approximately 26± east of the centerline of 127th Street East.
Elevation = 1362.34 (NAVD88)



Sta. 0+00, Begin Line 1
Connect to Existing 10" Stub and Extend 10" Pipe South Contractor to Verify Depth and Location of Existing Stub Prior to Construction.
ExMH Rim Elev. = 1349.71

CAUTION!
U/G Fiber Optic, 4" Nat. Gas, AT&T & O/H Elec. Crossing

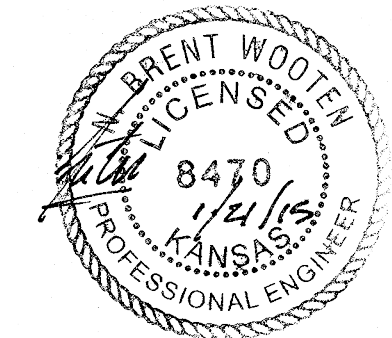
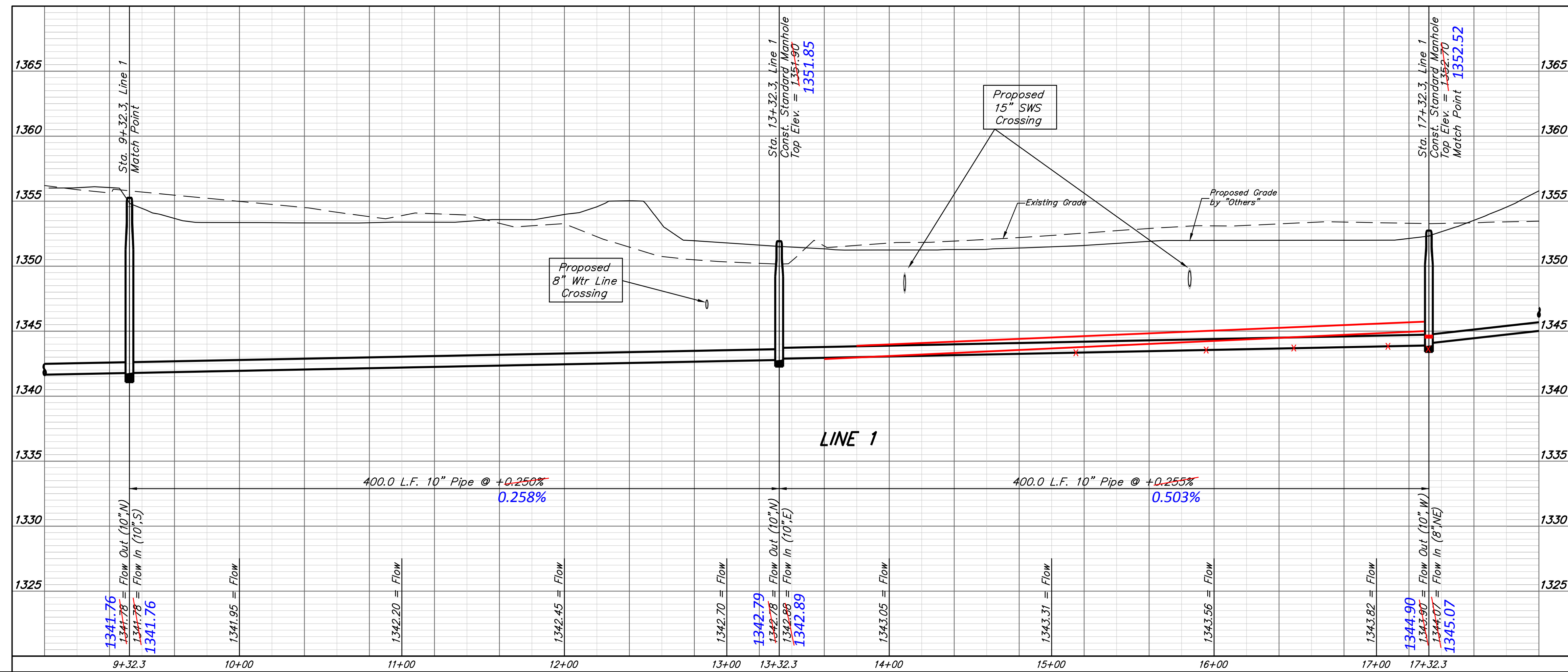
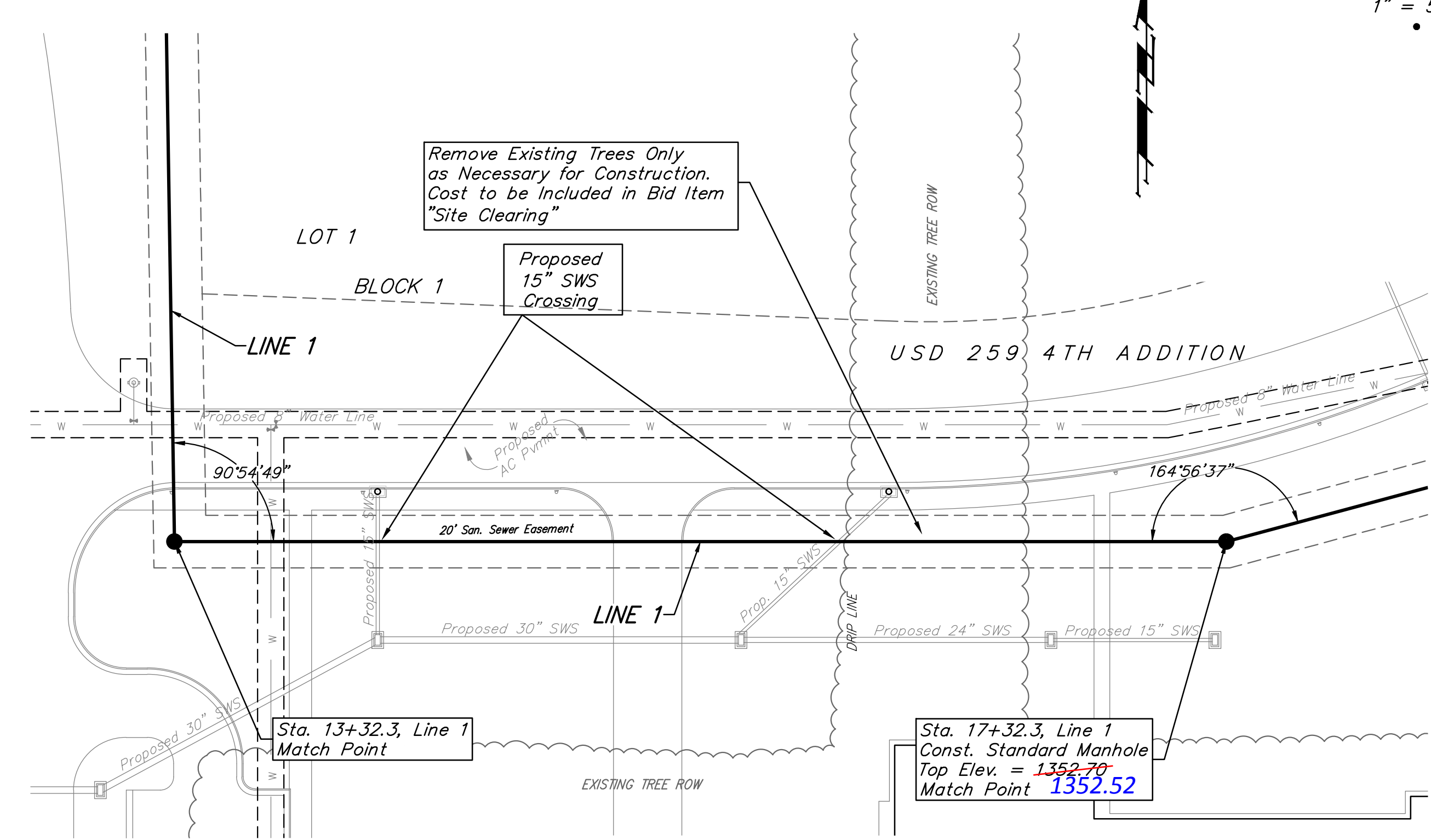
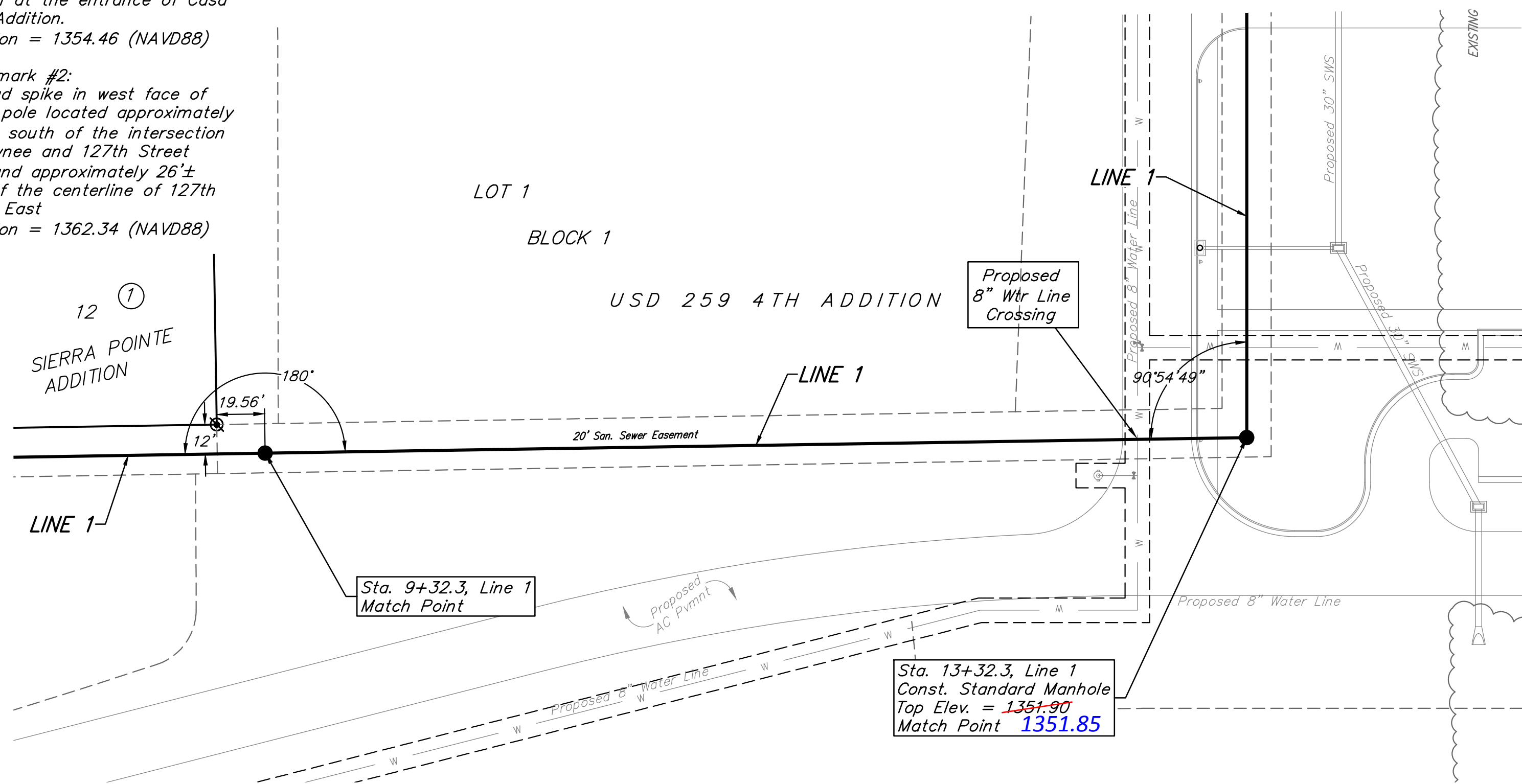
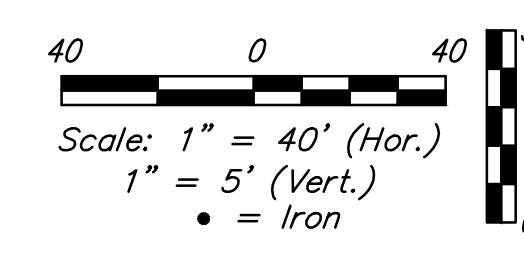


		USD 259 4TH ADDITION LINE 1 Sanitary Sewer Improvements	
Baughman Company, P.A. 315 Ellis St. Wichita, KS 67211 P 316-262-7271 F 316-262-0149 ENGINEERING SURVEYING PLANNING LANDSCAPE ARCHITECTURE			
PROJECT NUMBER	DESIGN	SPB	DRAWN
REVISIONS:	APPROVED	JAK	DATE
			11/14
	SCALE	Noted	
	SHEET	2 OF 13	

BENCHMARKS

Benchmark #1:
Chiseled square on top of median at the entrance of Casa Bella Addition.
Elevation = 1354.46 (NAVD88)

Benchmark #2:
Railroad spike in west face of power pole located approximately 1185'± south of the intersection of Pawnee and 127th Street East and approximately 26'± east of the centerline of 127th Street East
Elevation = 1362.34 (NAVD88)

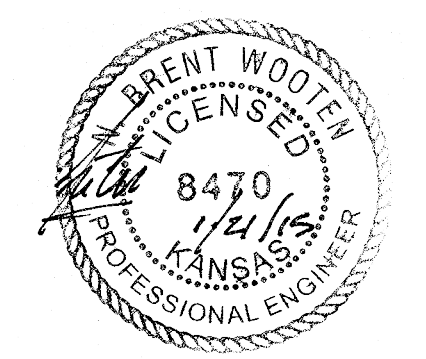
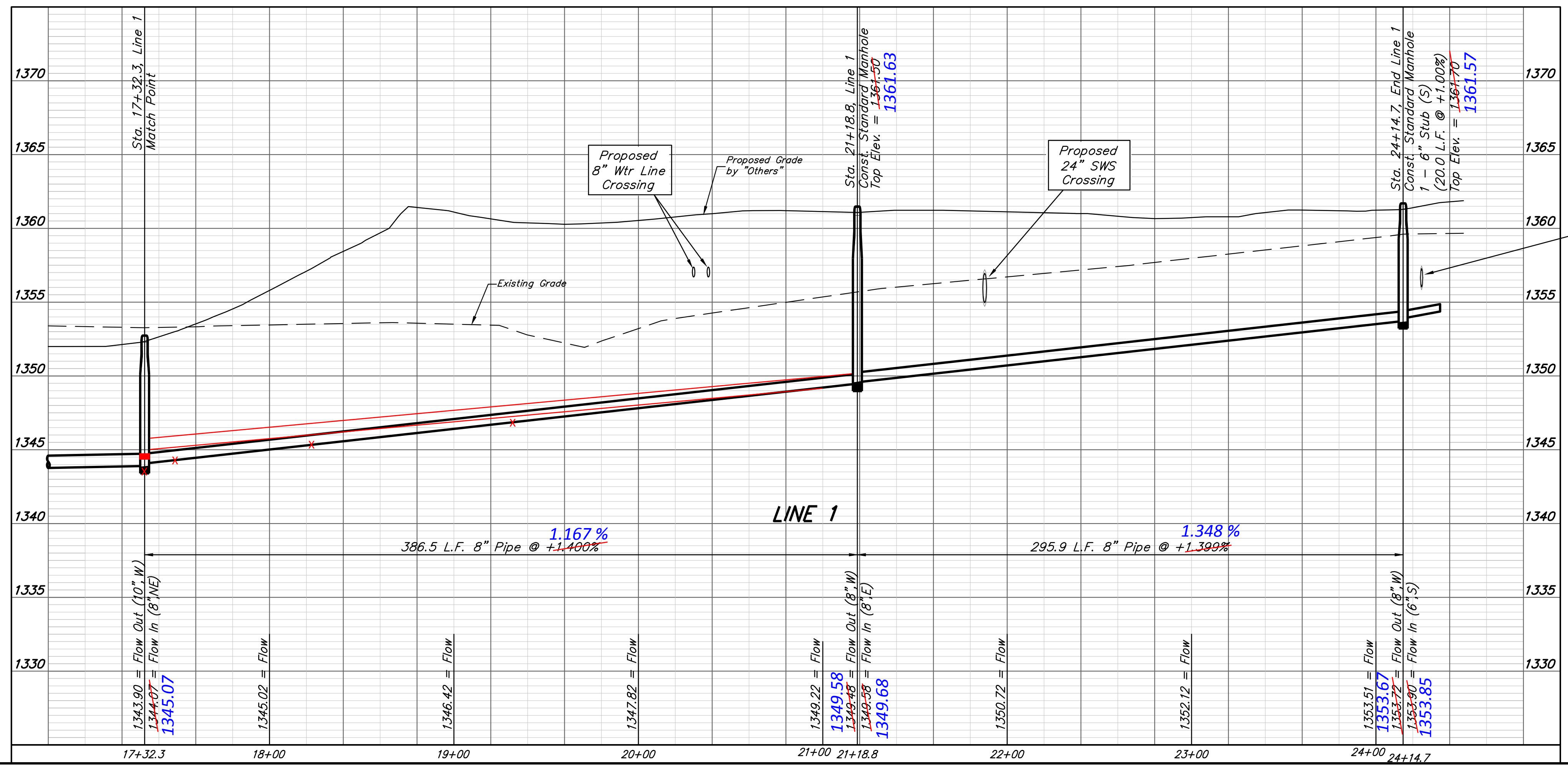
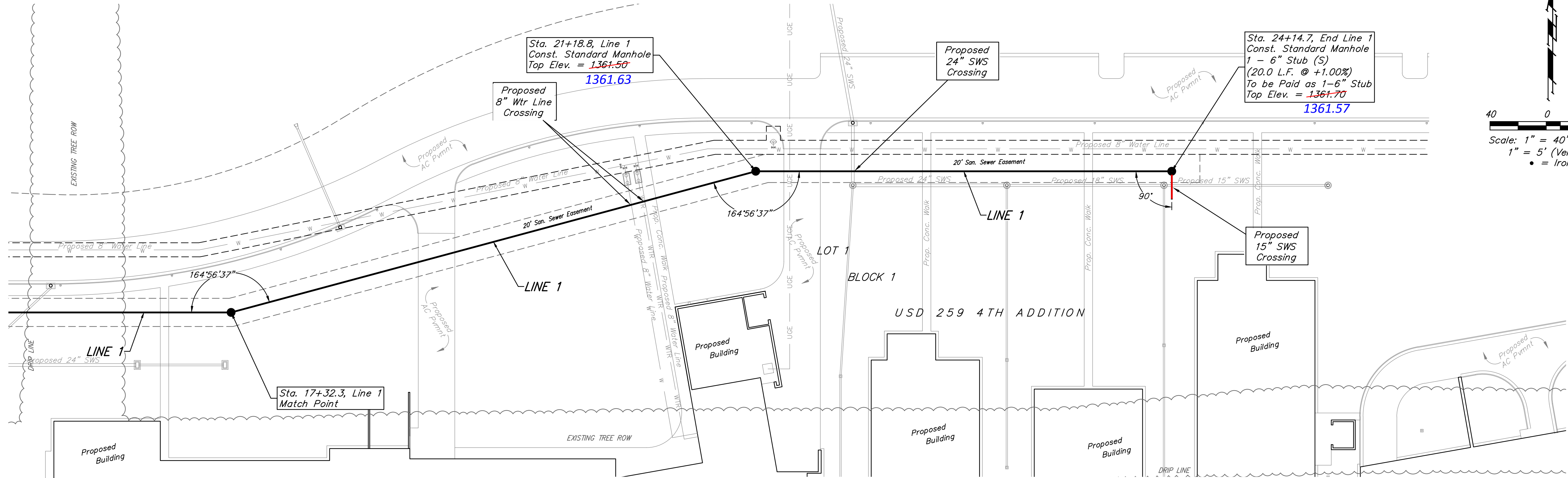


Baughman		USD 259 4TH ADDITION	
		LINE 1	
		Sanitary Sewer Improvements	
Baughman Company, P.A. 315 Ellis St. Wichita, KS 67211 P 316-262-7271 F 316-262-0149 ENGINEERING SURVEYING PLANNING LANDSCAPE ARCHITECTURE			
PROJECT NUMBER	DESIGN	SPB	DRAWN
	APPROVED	JAK	JAK
REVISIONS:		DATE	11/14
	SCALE	Noted	
	SHEET		
3 OF 13			

BENCHMARKS

Benchmark #1:
Chiseled square on top of median at the entrance of Casa Bella Addition.
Elevation = 1354.46 (NAVD88)

Benchmark #2:
Railroad spike in west face of power pole located approximately 1185± south of the intersection of Pawnee and 127th Street East and approximately 26± east of the centerline of 127th Street East
Elevation = 1362.34 (NAVD88)



		USD 259 4TH ADDITION	
		LINE 1 Sanitary Sewer Improvements	
<small>Baughman Company, P.A. 315 Ellis St. Wichita, KS 67211 P 316-262-7271 F 316-262-0149 ENGINEERING SURVEYING PLANNING LANDSCAPE ARCHITECTURE</small>			
PROJECT NUMBER	DESIGN	DRAWN	
	SPB	JAK	
REVISIONS:	APPROVED	DATE	
	Noted	11/14	
	SCALE		
	Sheet		
			4 OF 13

HERRINGTON STREET

PAWNEE AVE

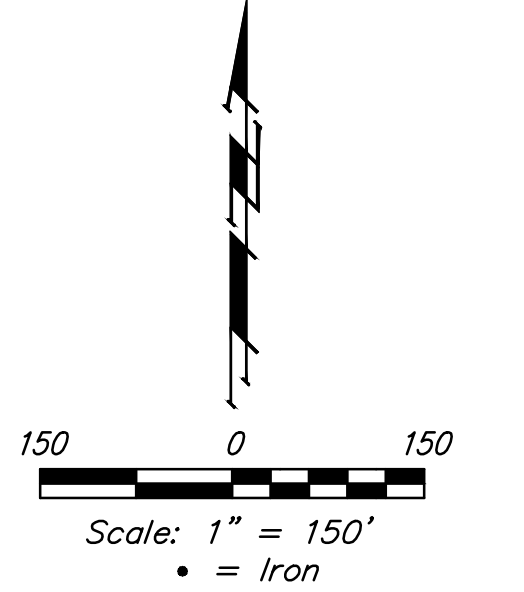
127TH STREET EAST

BENCHMARKS

*Benchmark #1:
Chiseled square on top of
median at the entrance of Casa
Bella Addition.
Elevation = 1354.46 (NAVD88)*

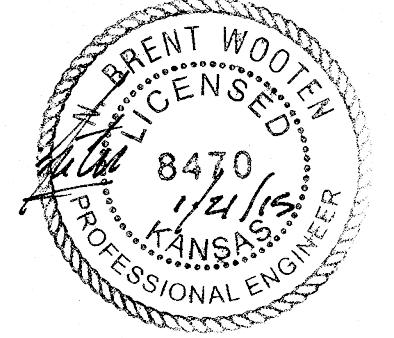
*Benchmark #2:
Railroad spike in west face of
power pole located approximately
1185'± south of the intersection
of Pawnee and 127th Street
East and approximately 26'±
east of the centerline of 127th
Street East
Elevation = 1362.34 (NAVD88)*


Point Table			
Point #	Northing	Easting	Description
1	1670434.46	1689084.54	center stone
2	1670512.75	1691736.31	E1/4R4F
3	1673105.45	1691723.64	NESC5RF
4	1673063.06	1689072.08	N1/4R5F
20	1673003.02	1689072.35	r&b5
21	1673019.69	1690114.77	r&b5
22	1672319.83	1690125.94	r5
23	1672331.47	1690855.27	brs
24	1672134.54	1691053.40	r5
26	1670560.80	1691676.16	R/B5
27	1670554.50	1691461.20	R/B5
28	1670504.66	1691461.45	R/B5
99	1673137.93	1689872.79	PLATBM88
100	1673042.69	1689066.19	MAG
101	1673054.90	1690219.24	N
104	1673097.50	1689907.97	MAG
135	1672144.34	1691668.38	R/B5
222	1670512.75	1691736.31	
300	1670469.59	1689196.18	N
302	1671853.20	1691745.03	topopt
303	1670793.18	1691719.24	topopt
4000	1673007.87	1690000.90	MH
4001	1673009.50	1690102.93	MH
4002	1672700.03	1690107.87	MH
4003	1672300.08	1690114.25	MH
4004	1671900.13	1690120.63	MH
4005	1671900.13	1690520.63	MH
4006	1672000.54	1690893.88	MH
4007	1672000.54	1691189.84	MH



300
N
center stone

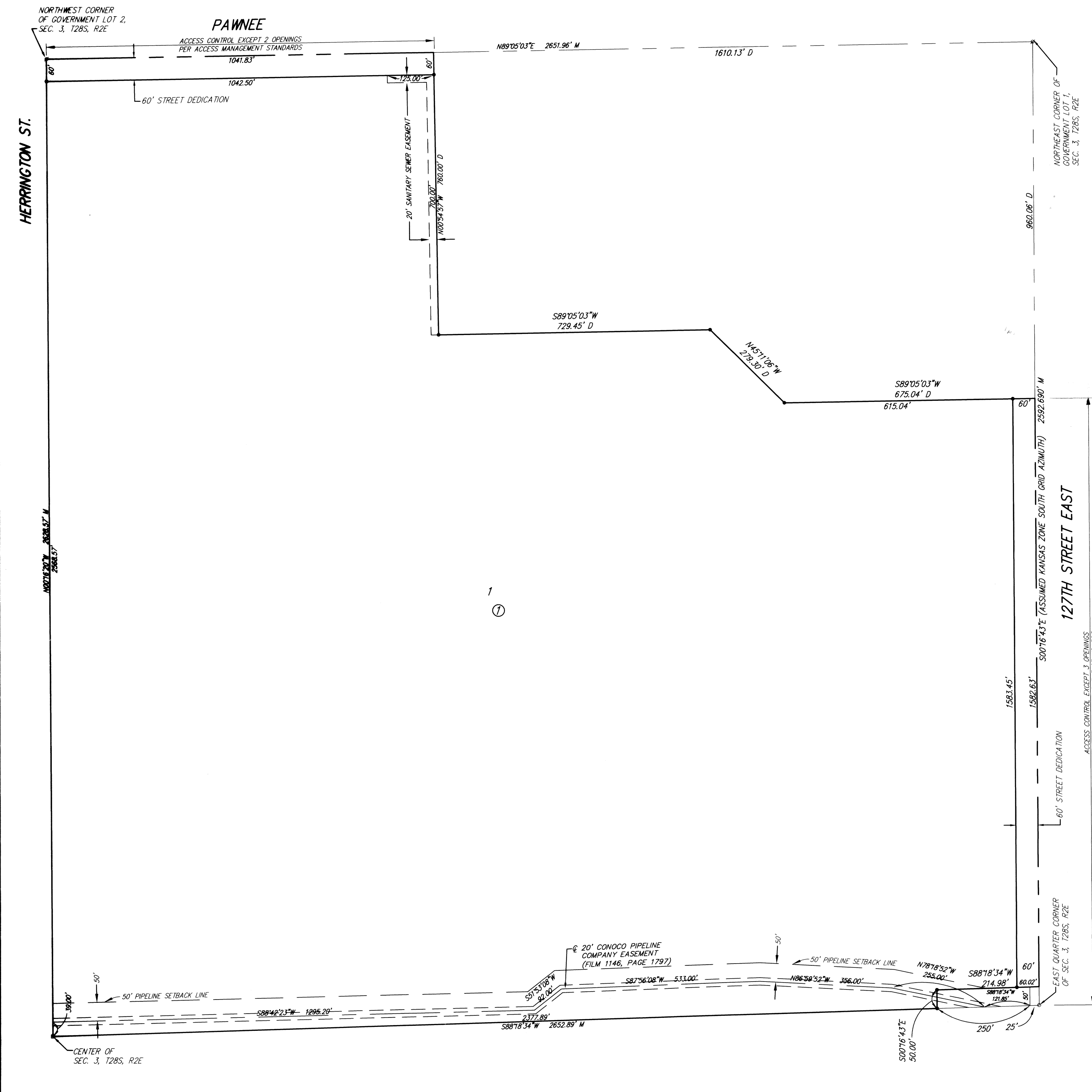
27 R/B5
28 R/B5
222 E1/4R4F
26 R/B5



	USD 259 4TH ADDITION	
	COORDINATES	
Sanitary Sewer Improvements		
<small>Baughman Company, P.A. 315 Ellis St. Wichita, KS 67211 P 316-262-7271 F 316-262-0149 ENGINEERING SURVEYING PLANNING LANDSCAPE ARCHITECTURE</small>		
PROJECT NUMBER	DESIGN	DRAWN
	SPB	JAK
REVISIONS:	APPROVED	DATE
	Noted	11/14
	SCALE	
	Noted	
	SHEET	
6 OF 13		

USD 259 4TH ADDITION

Wichita, Sedgwick County, Kansas



State of Kansas) SS
Sedgwick County)

We, Ruggles & Bohm, P.A., Land Surveyors in aforesaid county and state, do hereby certify that, under the supervision of the undersigned, we have surveyed and platted "USD 259 4TH ADDITION", Wichita, Sedgwick County, Kansas, and that the accompanying plat is a true and correct exhibit of the property surveyed, described as follows:

The NE1/4 of Sec. 3, T28S, R2E of the 6th P.M., Sedgwick County, Kansas, EXCEPT a tract of land lying in a portion of Government Lots 1 and 2, Section 3, Township 28 South, Range 2 East, of the 6th Principal Meridian, Wichita, Sedgwick County, Kansas; said tract being more particularly described as follows: BEGINNING at the northeast corner of said Northeast Quarter, thence along the east line of said Quarter on a Kansas coordinate system of 1983 south zone grid bearing of S00°16'43"E, 960.06 feet; thence parallel with and 960.00 feet south of the north line of said Quarter, S89°05'03"W, 675.04 feet; thence N45°11'06"W, 279.30 feet to a point lying 760.00 feet south of said north line; thence S89°05'03"W, 729.45 feet; thence N00°54'57"W, 760.00 feet to said north line; thence along said north line, N89°05'03"E, 1610.13 feet to the point of beginning, AND EXCEPT that described as beginning at the southeast corner of said NE1/4, thence S88°16'17"W, along the south line of said NE1/4, 275.00 feet; thence N00°52'40"W, parallel with the east line of said NE1/4, 50.00 feet; thence N88°16'17"E, parallel with said south line, 275.00 feet to the east line of said NE1/4; thence S00°52'40"E, along said east line, 50.00 feet to the point of beginning.

All public easements and dedications are hereby vacated by virtue of K.S.A. 12-512(b).

Ruggles & Bohm, P.A.

Land Surveyor
William K. Clevenger

Know all men by these presents that we, the undersigned, have caused the land described in the surveyor's certificate to be platted into a Lot, a Block and Streets, to be known as "USD 259 4TH ADDITION", Wichita, Sedgwick County, Kansas. Access Controls as indicated are hereby granted to the appropriate governing body. The streets are hereby dedicated to and for the use of the public. The Sanitary Sewer Easement is hereby granted to the public for the construction and maintenance of a sanitary sewer. A drainage plan has been developed for this plat and all drainage easements shall remain at established grades, or as modified with the approval of the City Engineer, and unobstructed to allow for the conveyance of storm water.

Unified School District 259
 Connie Dietz, President

State of Kansas) SS
Sedgwick County)

The foregoing instrument acknowledged before me, this 27th day of August, 2010, by Connie Dietz, President, on behalf of the Board of Unified School District 259.

Mike Willome, Notary Public

My appointment expires 6/9/2011

MIKE WILLOME
NOTARY PUBLIC
STATE OF KANSAS
My Appt. Exp. 6/9/2011

Sedgwick County
Register of Deeds - Bill Meek
DOC #/FLM-PG: 29186139
Receipt #: 1768785
Page Recorded: 1
Clerk: Michelle Kl.
Authorized Sign: [Signature]
Recording Fee: \$20.00
Date Recorded: 12/2/2010 10:30:52 AM

This plat of "USD 259 4TH ADDITION", Wichita, Sedgwick County, Kansas, has been submitted to and approved by the Wichita-Sedgwick County Metropolitan Area Planning Commission, Wichita, Kansas.

Dated this 2nd day of June, 2010.

Wichita-Sedgwick County Metropolitan Area Planning Commission
 Chair: [Signature]
G. Nelson Van Fleet
Secretary: [Signature]
John E. Schlegel

This plat approved and all dedications shown hereon accepted by the City Council of the City of Wichita, Kansas, this 9th day of November, 2010.

At the Direction of the City Council
Mayor: [Signature]
City Clerk: [Signature]
Karen Sublett

Reviewed in accordance with K.S.A. 58-2005 on this 24th day of August, 2010.

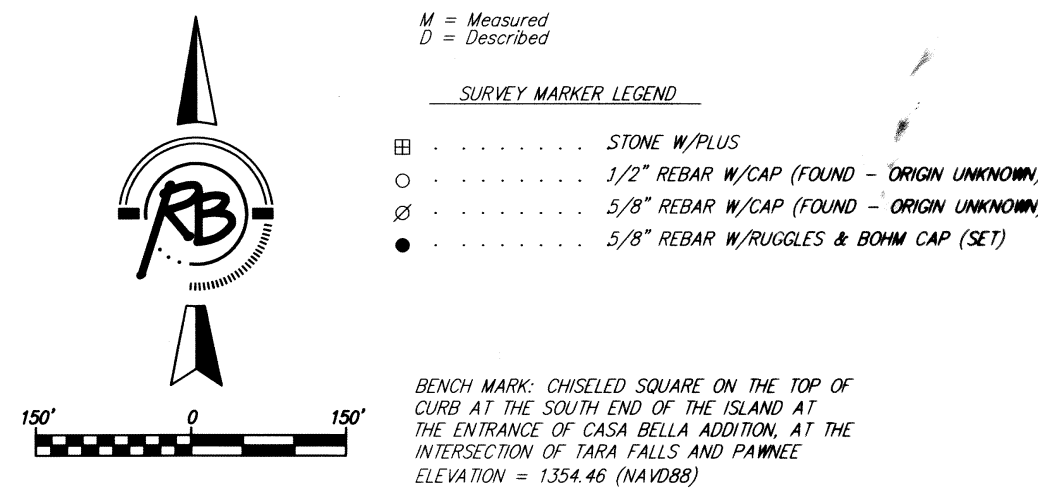
Deputy County Surveyor
Sedgwick County Kansas
Theresa Rabella, LS #1246

Entered on transfer record this 24th day of November, 2010.
Kelly B. Arnold, County Clerk

State of Kansas) SS
Sedgwick County)

This is to certify that this plat has been filed for record in the office of the Register of Deeds, this 2nd day of December, 2010, at 10:30:52 o'clock A.M. and is duly recorded.

Register of Deeds
Bill Meek
Deputy
Tonya Buckingham



Ruggles & Bohm, P.A.
Engineering, Surveying, Land Planning
924 North Main (316) 264-8008
Wichita, Kansas 67203 (316) 264-4621 fax
www.rbkansas.com E-mail: info@rbkansas.com