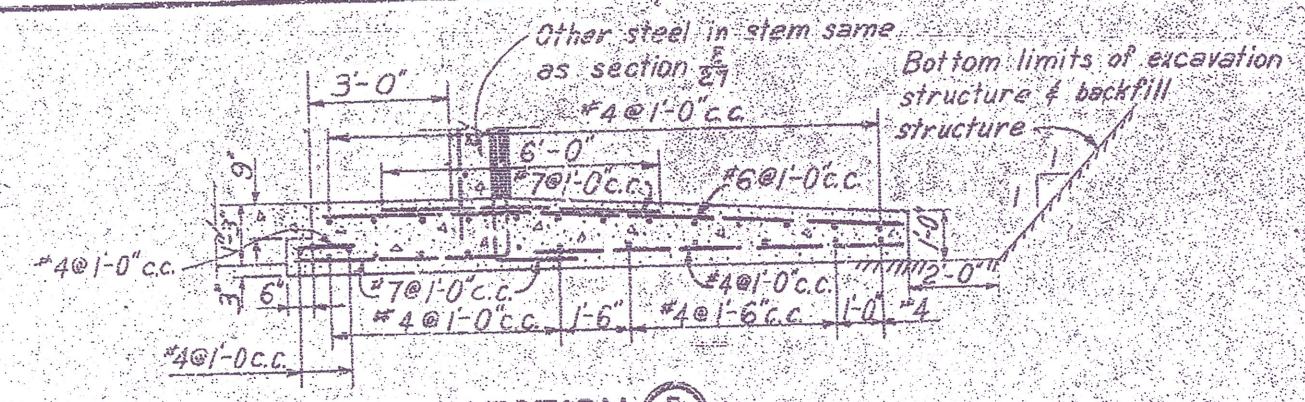
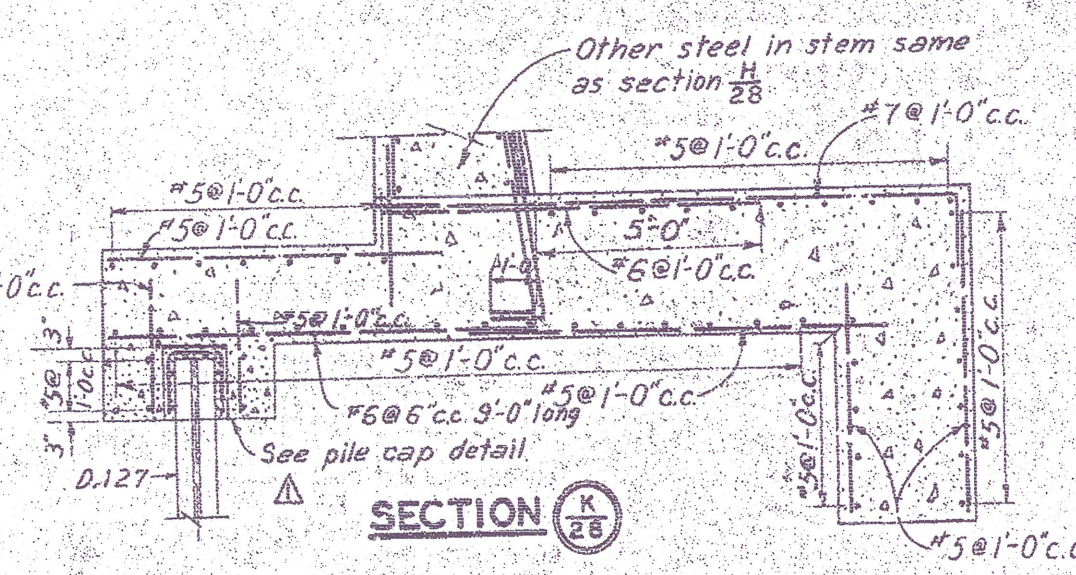


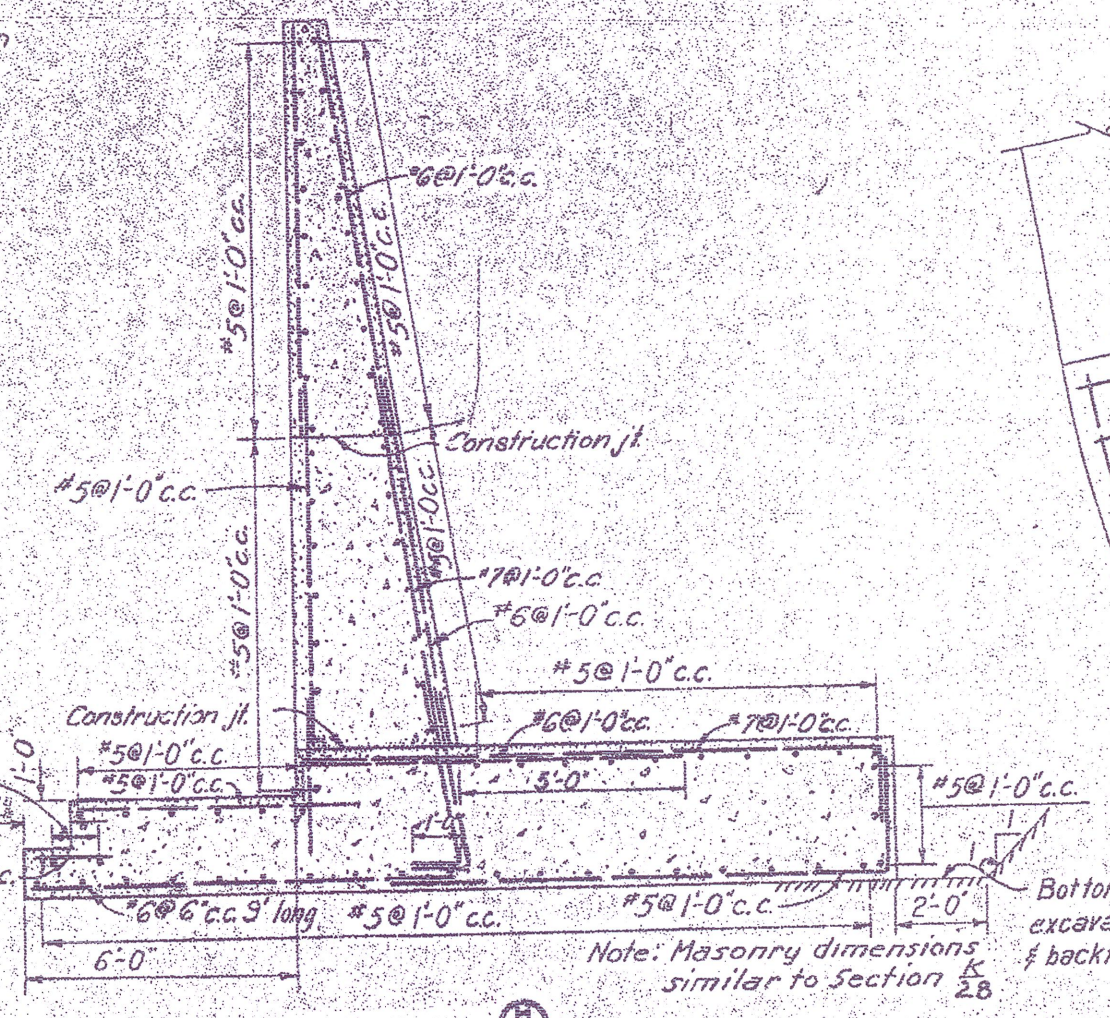
SECTION 27 (REINFORCEMENT)



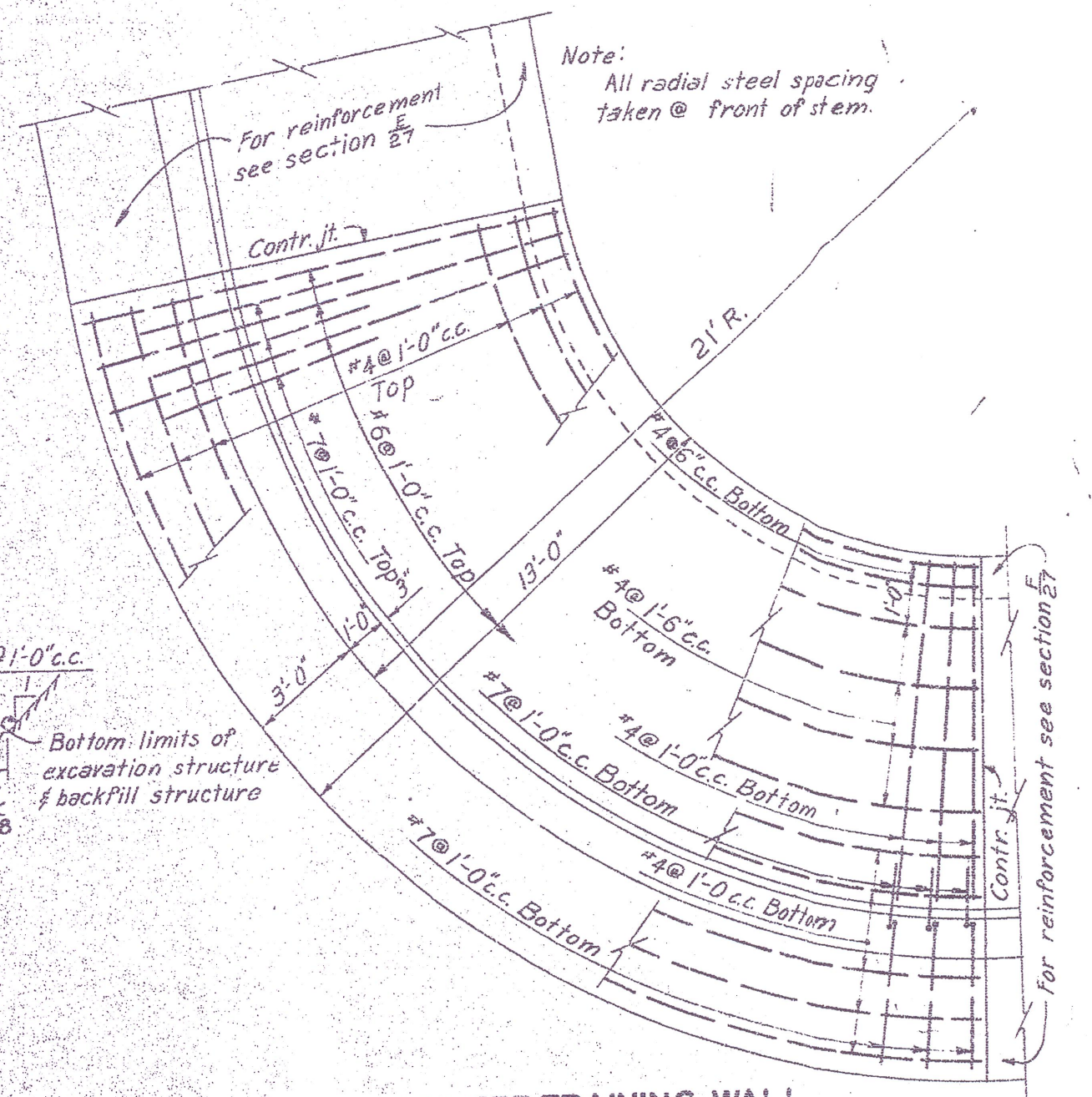
SECTION 28



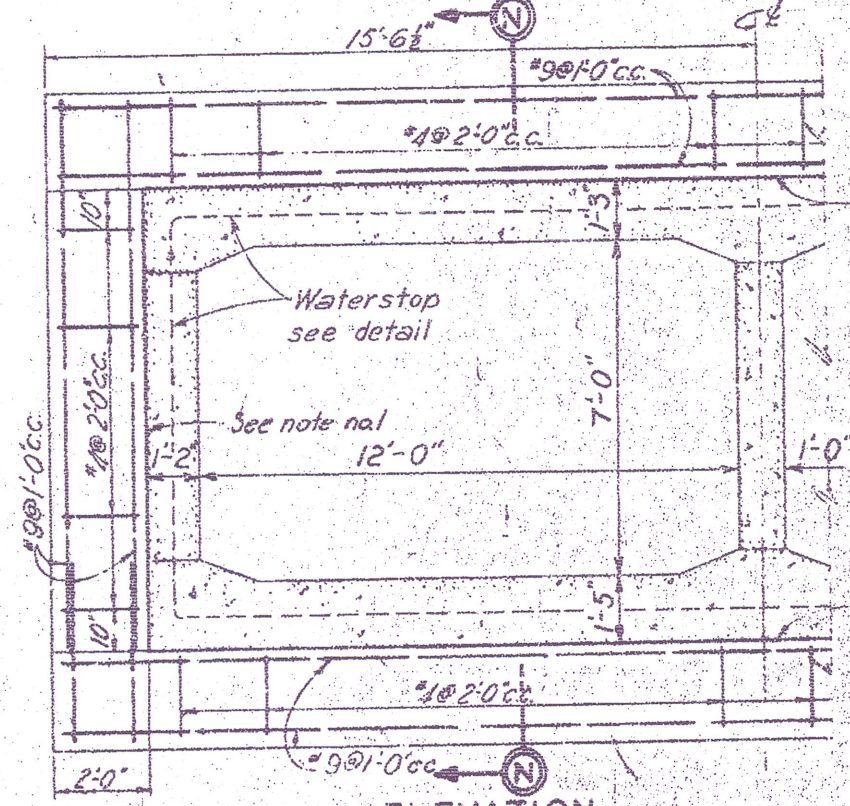
SECTION 29



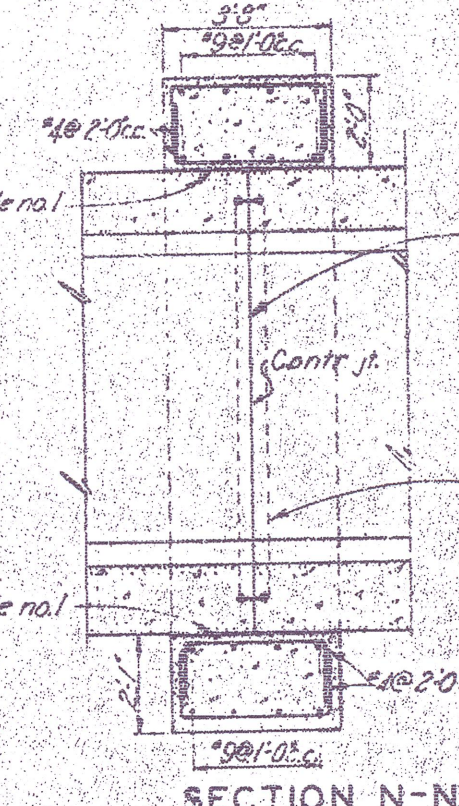
SECTION 30 (REINFORCEMENT)



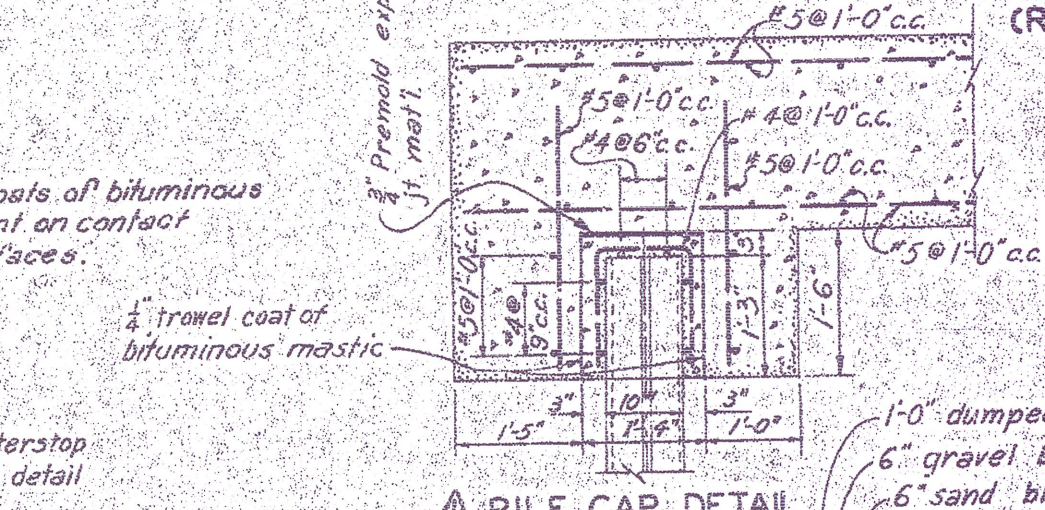
PLAN-US LEFT TRAINING WALL



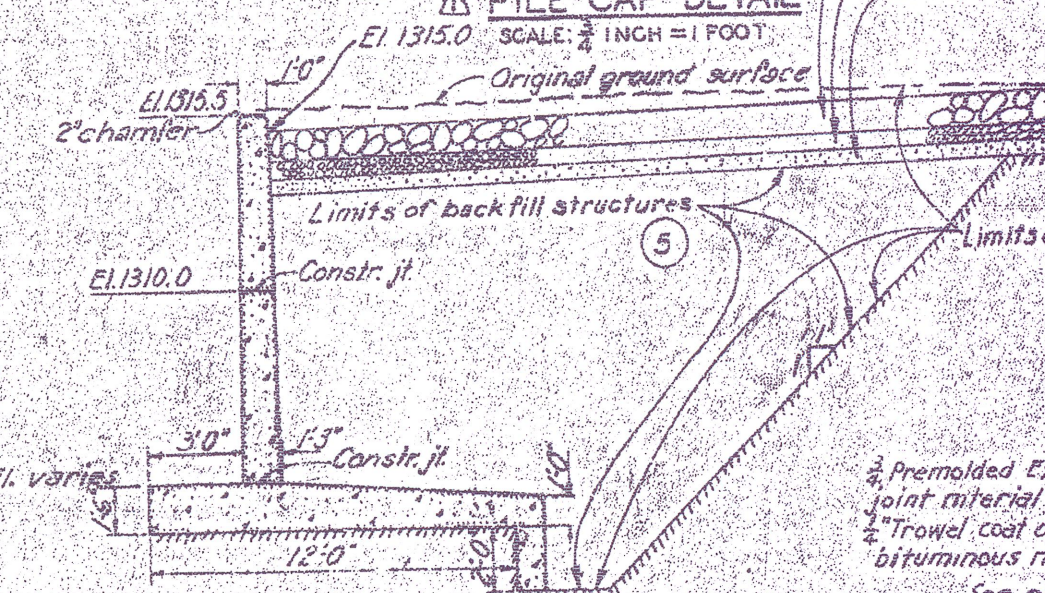
ELEVATION COLLAR DETAIL



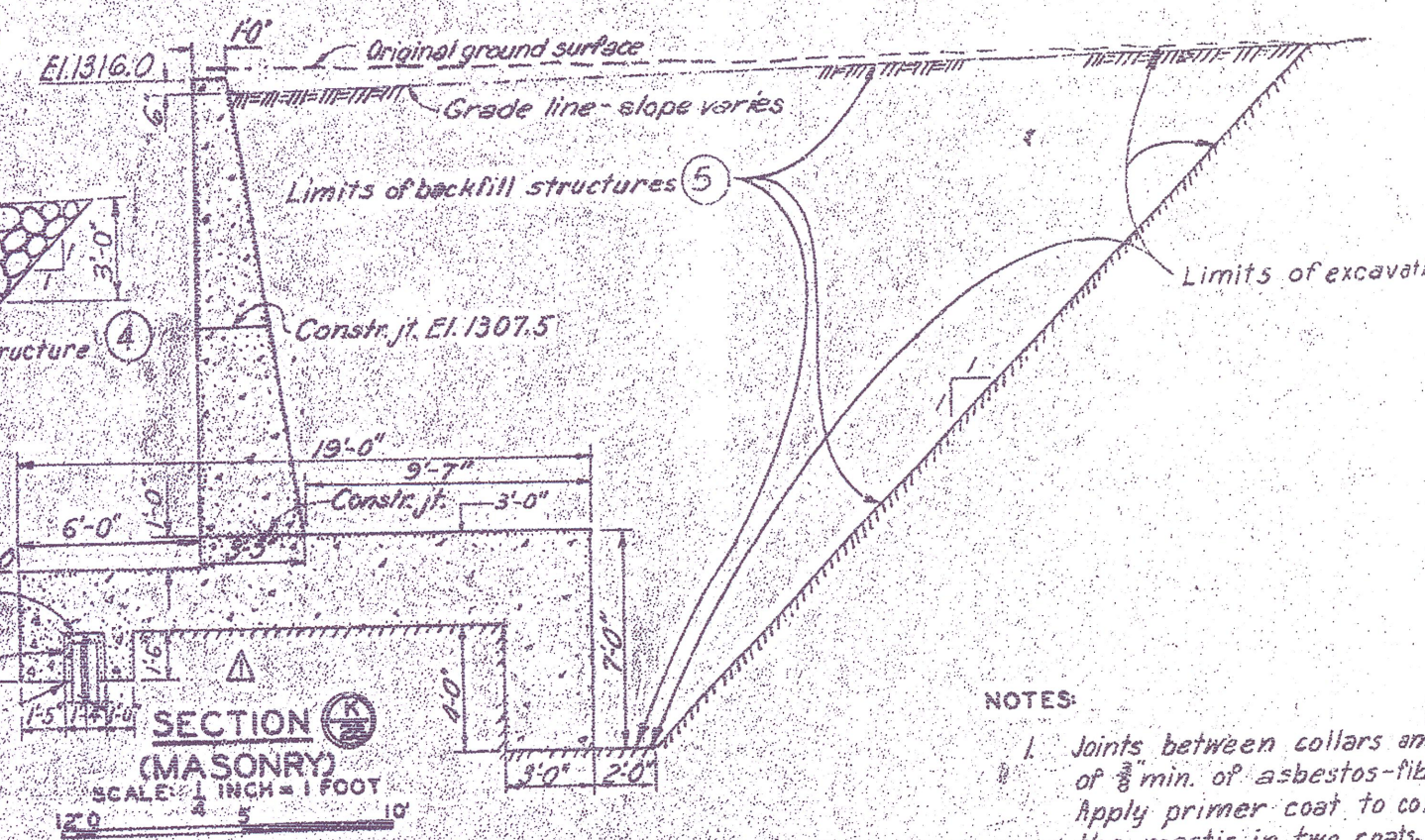
SECTION N-N



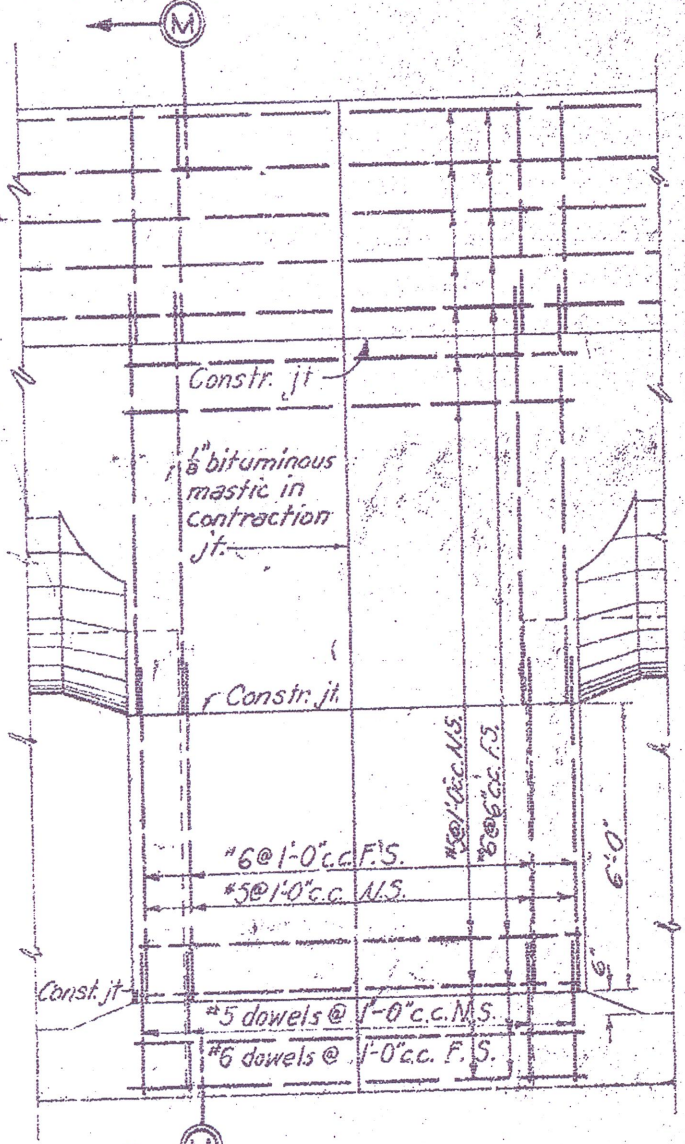
PILE CAP DETAIL



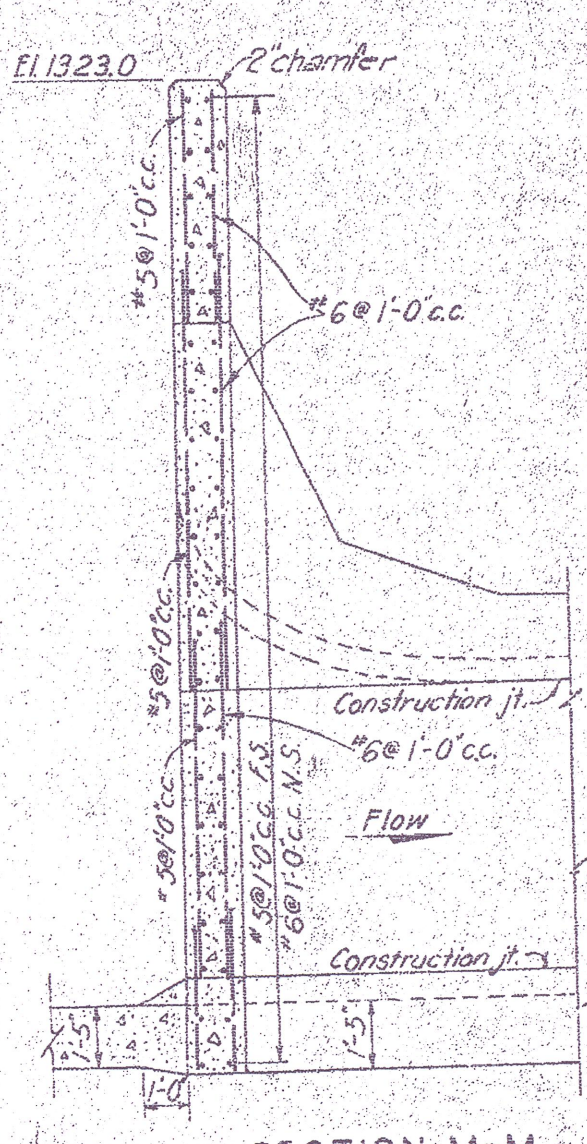
SECTION 31 (MASONRY)



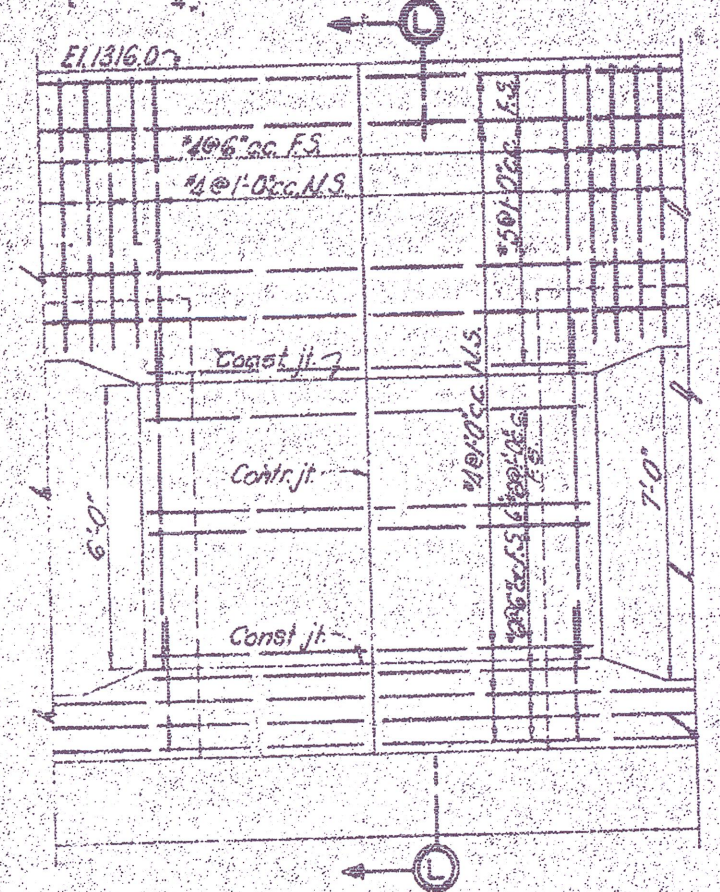
SECTION 32 (MASONRY)



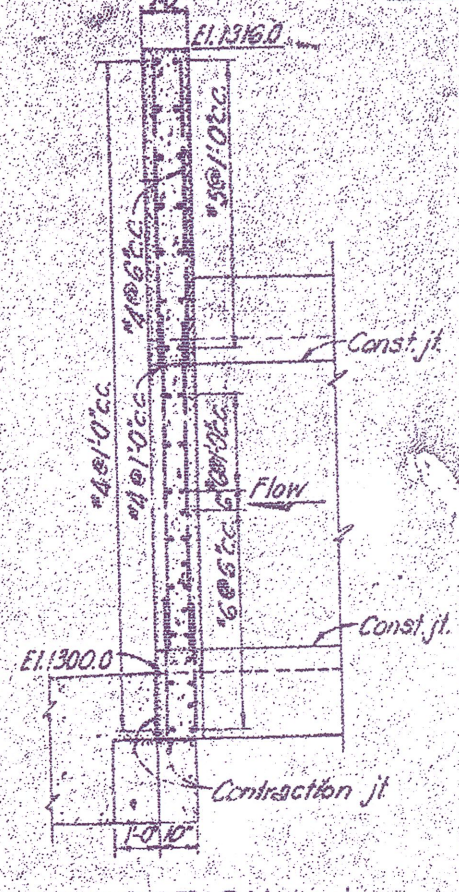
ELEVATION UPSTREAM HEADWALL



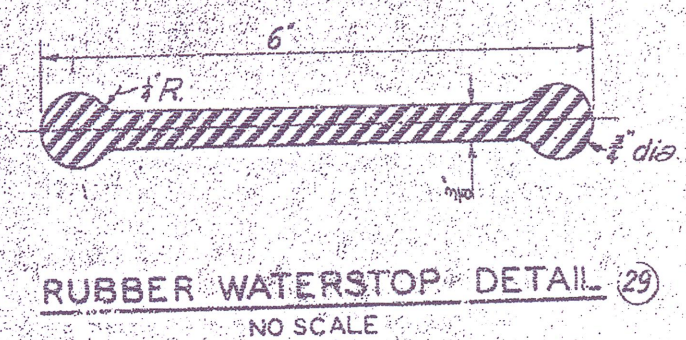
SECTION M-M



ELEVATION DOWNSTREAM HEADWALL



SECTION L-L



RUBBER WATERSTOP DETAIL

- NOTES:
1. Joints between collars and conduits to consist of 1/8 min. of asbestos-fibre bituminous mastic. Apply primer coat to concrete and apply the mastic in two coats, allowing each coat to dry before applying the successive coats.
 2. For general notes, see dwg. C121-187.
 3. For masonry and reinforcement notes, see dwg. C121-200.
 4. For other details of control structure no. IV, see dwgs. C121-205 thru 211.
 5. For location of control structure no. IV, see dwg. C121-195.

ARKANSAS RIVER WATERSHED
 WICHITA AND VALLEY CENTER
 BIG SLOUGH - COWSKIN FLOODWAY
 PARCEL B - PHASE I
 CONTROL STRUCTURE IV - MASONRY & REINF III
 SCALE 1/2" = 1' FOOT
 IN 30 SHEETS SHEET NO 29
 CORPS OF ENGINEERS, U.S. ARMY TULSA DISTRICT, MAR. 18, 1953
 SUBMITTED APPROVAL RECOMMENDED APPROVED
 M. M. [Signature] CHIEF, ENGR. DIVISION LT. COL. CORPS OF ENGINEERS
 FOR THE DISTRICT ENGINEER

DATE	DESCRIPTION	CHKD.	REC.	APPR.
6-4-53	Downstream wall footing revised & sheet pile cap revised & relocated.			