

STATE	PROJECT NO.	YEAR	SHEET NO.	TOTAL SHEETS
KANSAS	87 TE-0617-01	2014	T1	54

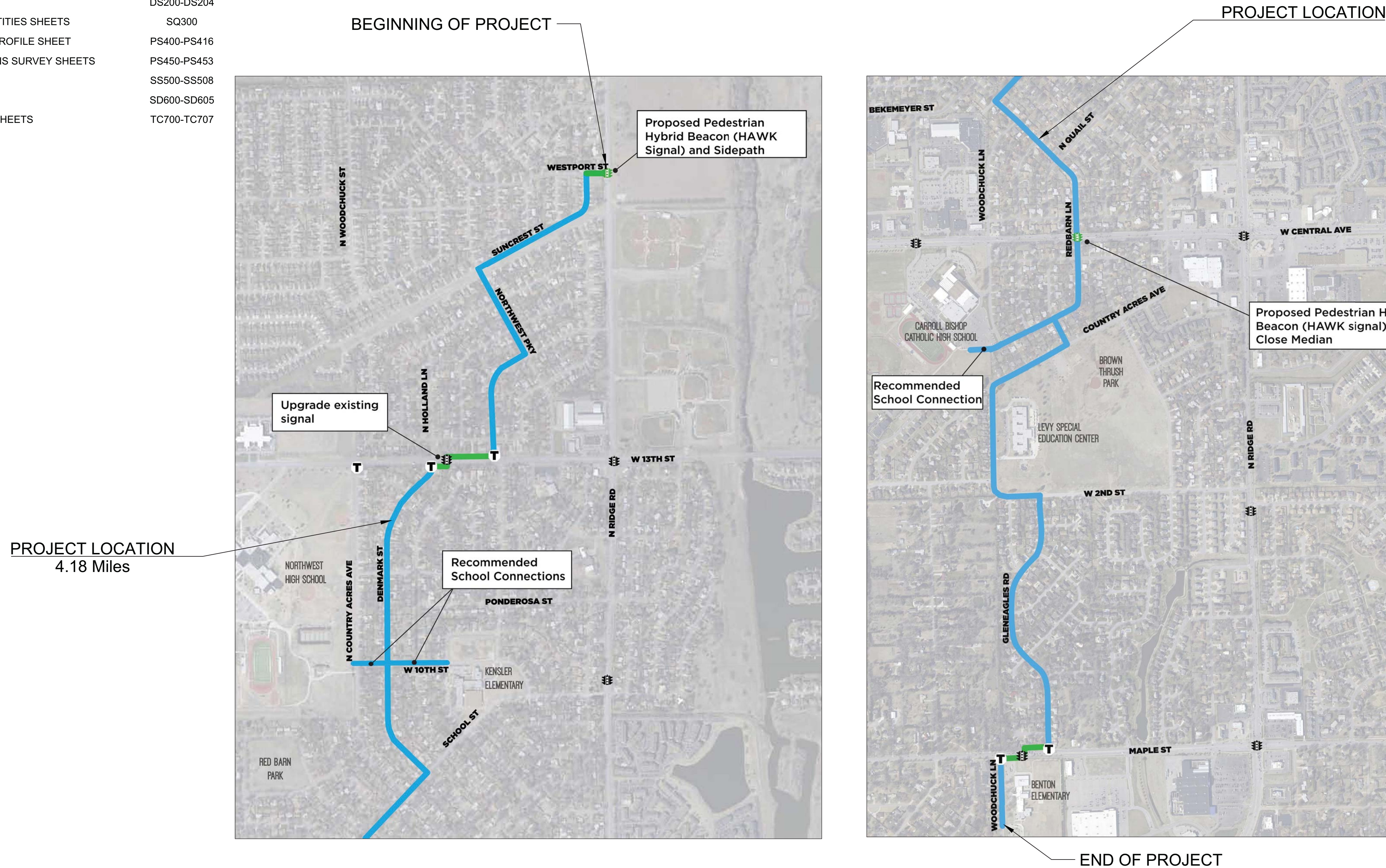
CITY OF WICHITA, KANSAS
 PLAN OF PROPOSED
 C.O.W. PROJECT NO. 472-85110
 O.C.A. PROJECT NO. 707053
 KDOT PROJECT NO. 87 TE-0617-01
 TEA-T061(701)

PAVEMENT MARKING
 SIGNING

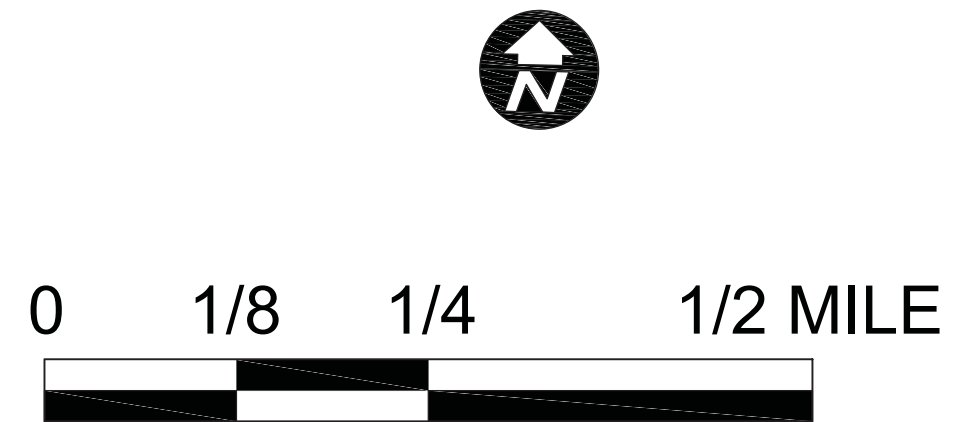
INDEX OF SHEETS

DESCRIPTION	SHEET NUMBER
TITLE SHEET	T1
TYPICAL SECTIONS	TS100-TS103
DETAIL SHEETS	DS200-DS204
SUMMARY OF QUANTITIES SHEETS	SQ300
PLAN SHEETS AND PROFILE SHEET	PS400-PS416
EXISTING CONDITIONS SURVEY SHEETS	PS450-PS453
SIGNAL SHEETS	SS500-SS508
SIGNING DETAILS	SD600-SD605
TRAFFIC CONTROL SHEETS	TC700-TC707

WOODCHUCK BICYCLE BOULEVARD



FINAL PLANS
 SUBMITTAL



RECOM. FOR APPROVAL - DATE

DESIGNED: PW	DRAWN: JH
REVIEWED: PW	
SCALE: AS SHOWN	
2013-152	11.11.2014
PROJECT NO.	DATE
FILE	

alta
 PLANNING + DESIGN
 www.altaplanning.com
 16141 Swingley Ridge Parkway
 Suite 300
 Chesterfield, MO 63017
 p:314.952.8570

CFS
 cfse.com
 ENGINEERS
 2930 SW Woodside Dr., Topeka, KS 66614
 p: 785-272-4709 f: 785-272-4736



CITY OF WICHITA, KANSAS
 WOODCOCK
 BICYCLE BOULEVARD

DATE: _____ DESIGNED BY: _____ DRAWN BY: _____ CHECKED BY: _____

Gary Jansen
 City Engineer
 City of Wichita