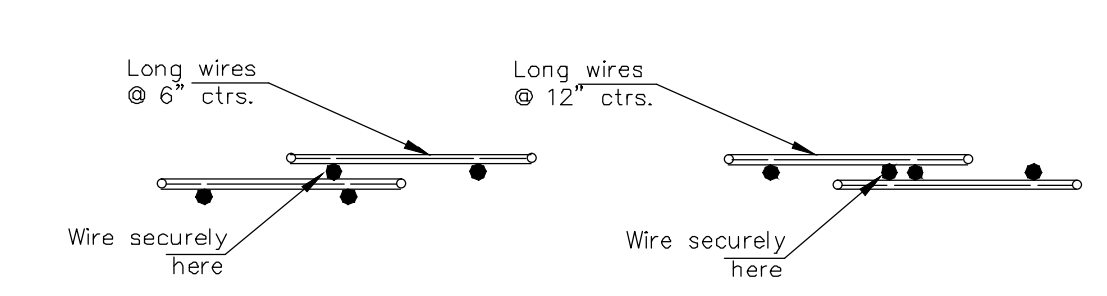


STATE	PROJECT NO.	YEAR	SHEET NO.	TOTAL SHEETS
KANSAS	87N-0582-01	2015	13	59



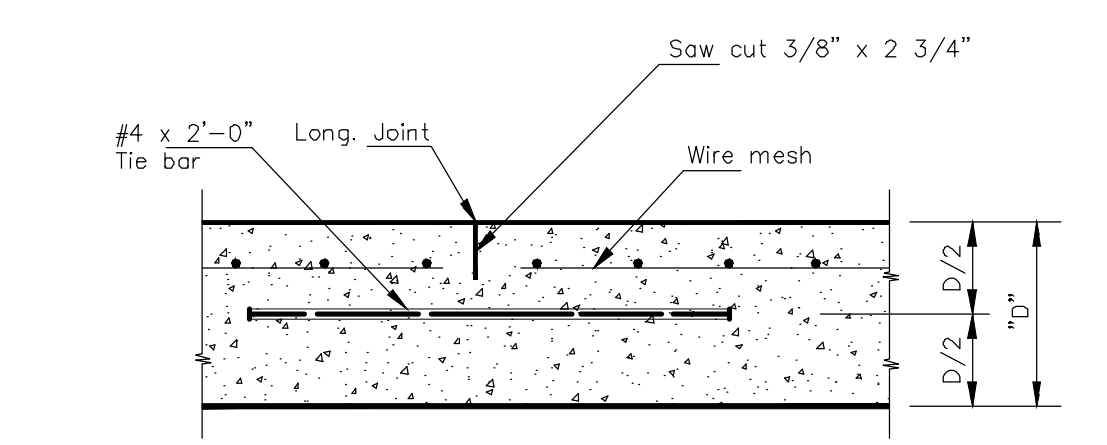
**DETAIL OF LAP FOR WIRE MESH**

NOTE: The lap shall extend beyond the first transverse wire of each sheet.

The sheets shall be wired securely at the edges and at intervals not to exceed 2'-6" for the full width of the sheet. Approx. weight of wire mesh = 44 lbs. per 100 sq. ft.

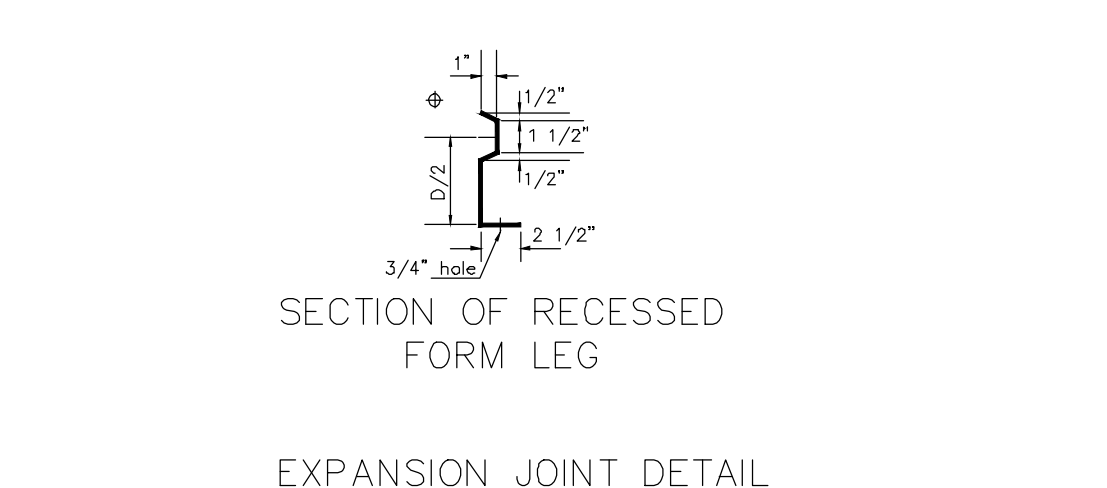
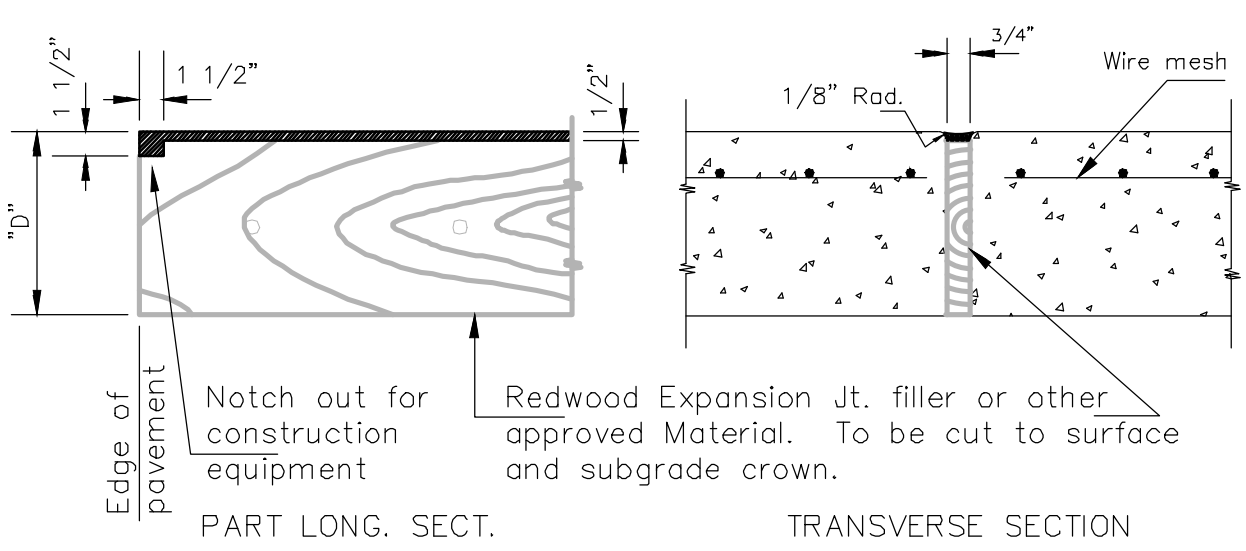
Other methods for fastening the sheets of wire mesh at the laps may be used with the approval of the Engineer.

NOTE: CONTRACTION JOINTS AND EXPANSION JOINTS SHALL BE FORMED IN THE MONOLITHIC CURB AT ALL LOCATIONS WHERE SUCH JOINTS ARE PLACED IN THE PAVEMENT. ADDITIONAL CONTRACTION JOINTS SHALL BE CUT IN THE MONOLITHIC CURB IN UNIFORM LENGTHS NOT EXCEEDING TEN FOOT INTERVALS BETWEEN THOSE JOINTS WHICH COINCIDE WITH JOINTS IN THE PAVEMENT.



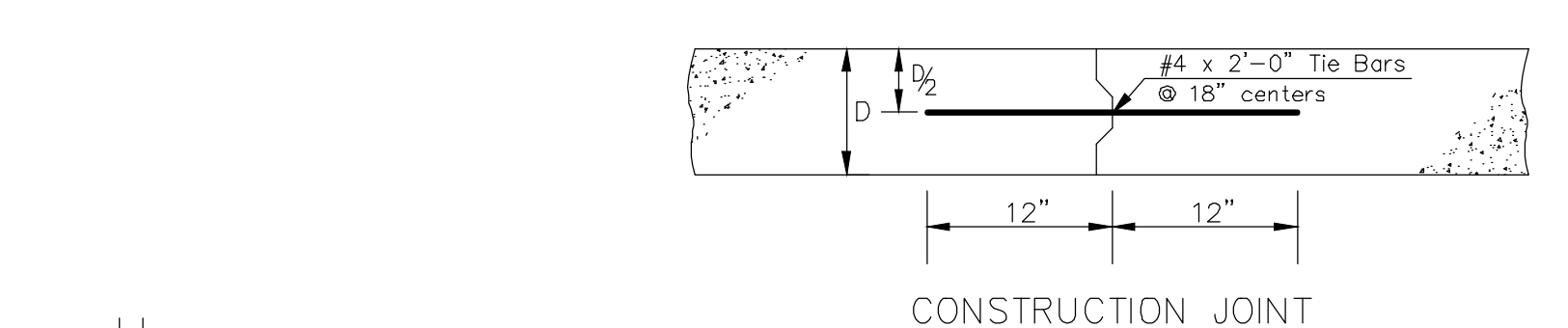
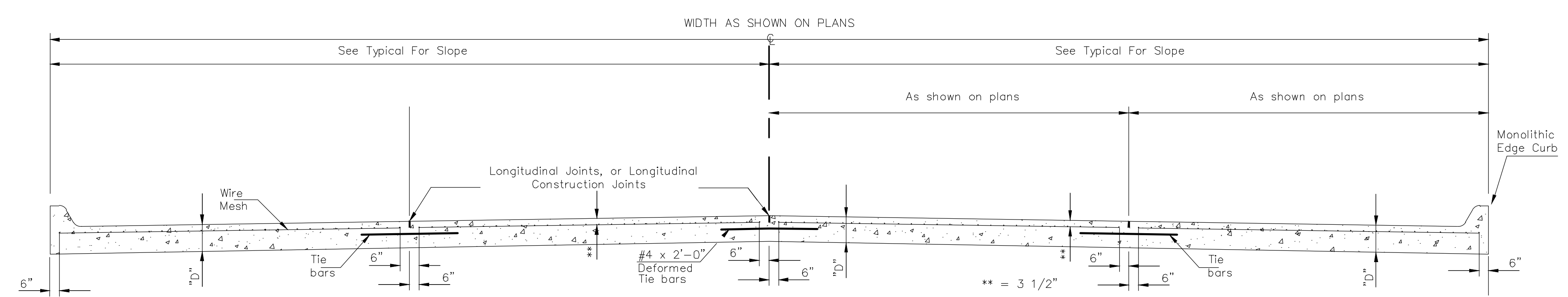
**LONGITUDINAL JOINT DETAIL TRANSVERSE SECTION**

NOTE: Longitudinal joint formed by sawing 2 3/4" deep and 3/8" wide and filled as specified in standard specifications.



**EXPANSION JOINT DETAIL**

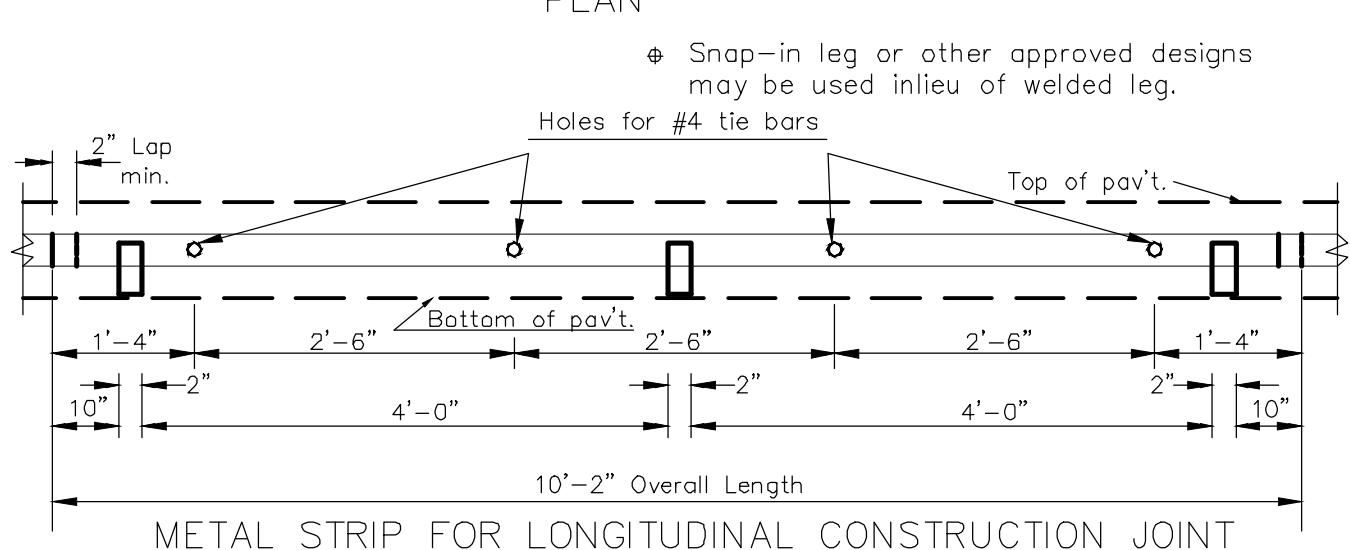
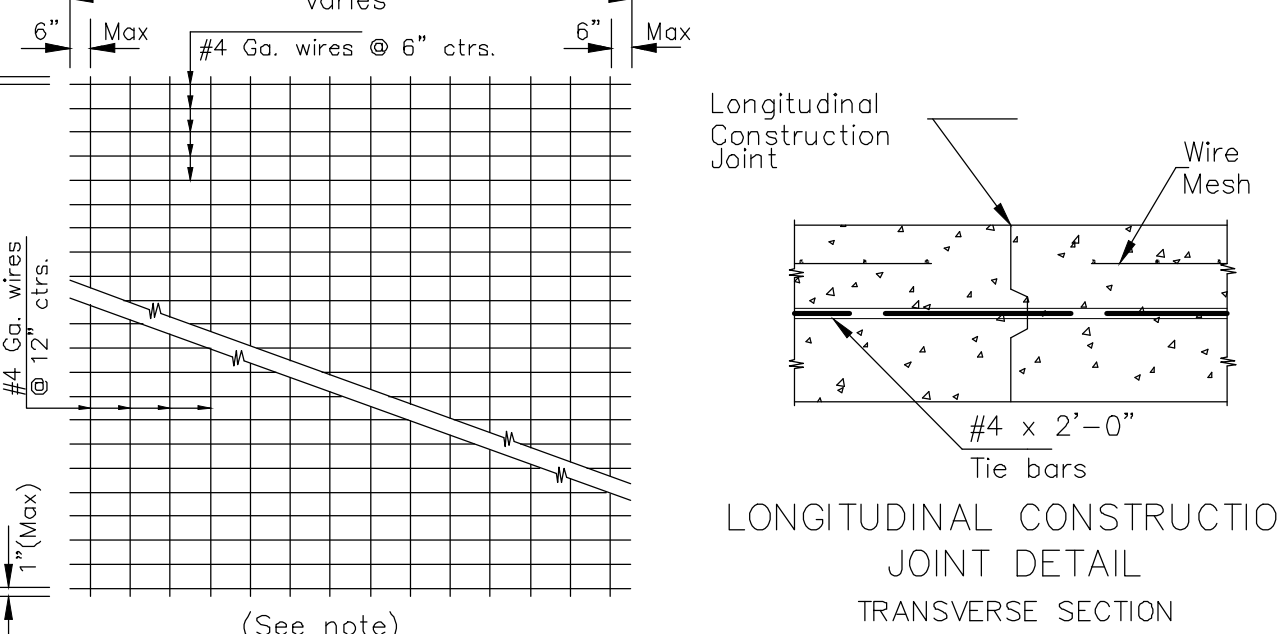
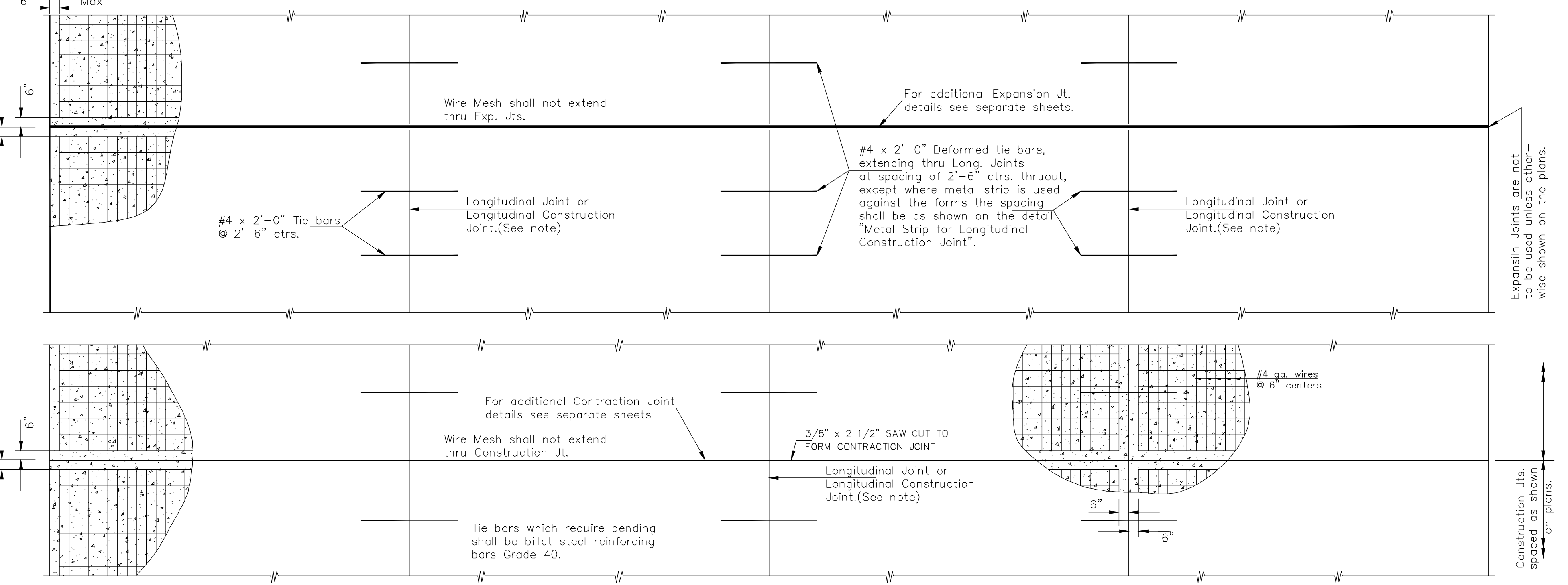
NOTE: EXPANSION JOINT MATERIAL MUST BE SECURELY HELD IN PLACE BY USING METAL STAKES, METAL PINS, OR BY OTHER APPROVED METHODS SO THAT WHEN THE PAVEMENT IS COMPLETED THE EXPANSION MATERIAL WILL BE PERPENDICULAR TO THE SURFACE OF THE COMPLETED PAVEMENT. CONCRETE SHALL BE HAND PLACED ON EACH SIDE OF THE EXPANSION JOINT MATERIAL IN A MANNER THAT WILL PRECLUDE DISPLACEMENT OF THE EXPANSION JOINT MATERIAL.



**TRANVERSE SECTION**

NOTE: A Construction Joint is required when the pour has been interrupted for a substantial length of time or at the end of a day's pour. Transverse Construction Joints shall be sawed and filled as specified for contraction joints.

\*\* Note: The 3 1/2" as shown on standard sheet is a nominal dimension and may be subject to a normal unevenness due to placement operations.



**METAL STRIP FOR LONGITUDINAL CONSTRUCTION JOINT**

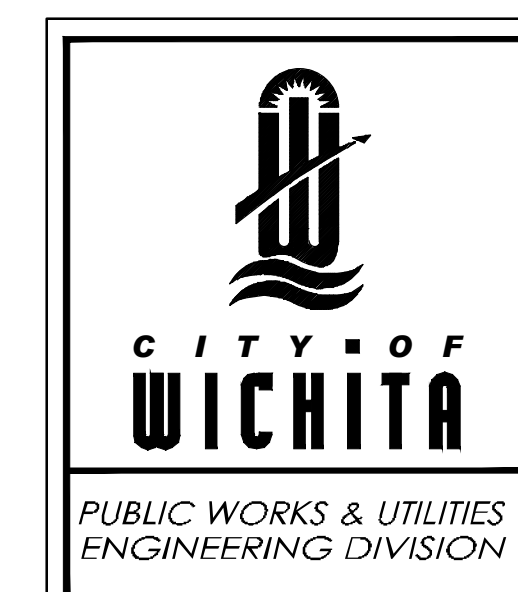
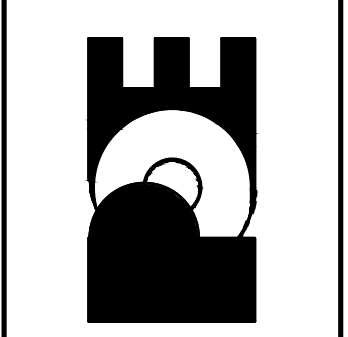
TO BE USED ONLY AGAINST FORMS. SHALL NOT EXTEND THROUGH CONTRACTION OR EXPANSION JOINTS. OTHER TYPES OF CONSTRUCTION SHALL BE PERMITTED WITH THE APPROVAL OF THE ENGINEER.

TYPICAL SHEET OF WELDED WIRE MESH (See note)

Revision	By	Date	No.
Approved			

13TH & EDGEWOOD  
CONCRETE PAVEMENT DETAILS  
CITY OF WICHITA, KANSAS  
GARY JANZEN, P.E. - CITY ENGINEER  
C.O.M. Project #472-85162; OCA #707069

POE & ASSOCIATES, INC.  
CONSULTING ENGINEERS  
544 West Douglas Avenue, Wichita, KS 67203  
Phone 316/685-4114 FAX 316/685-4444



**CONCRETE PAVEMENT DETAILS**

CITY ENGINEER  
**GARY JANZEN, P.E.**

PROJECT NUMBER	OCA NUMBER	DATE

CITY ENGINEER'S OFFICE  
CITY HALL - SEVENTH FLOOR  
455 NORTH MAIN STREET  
WICHITA, KANSAS 67202-1620  
(316) 268-4501

**FINAL**

Engineer: J. DICKMAN  
Designer: J. UNRUH  
Dwg. P.: \TO2097\DETAILS\DETAILS-COW  
Job No.: 87N-0582-01  
Date: 8/31/2015