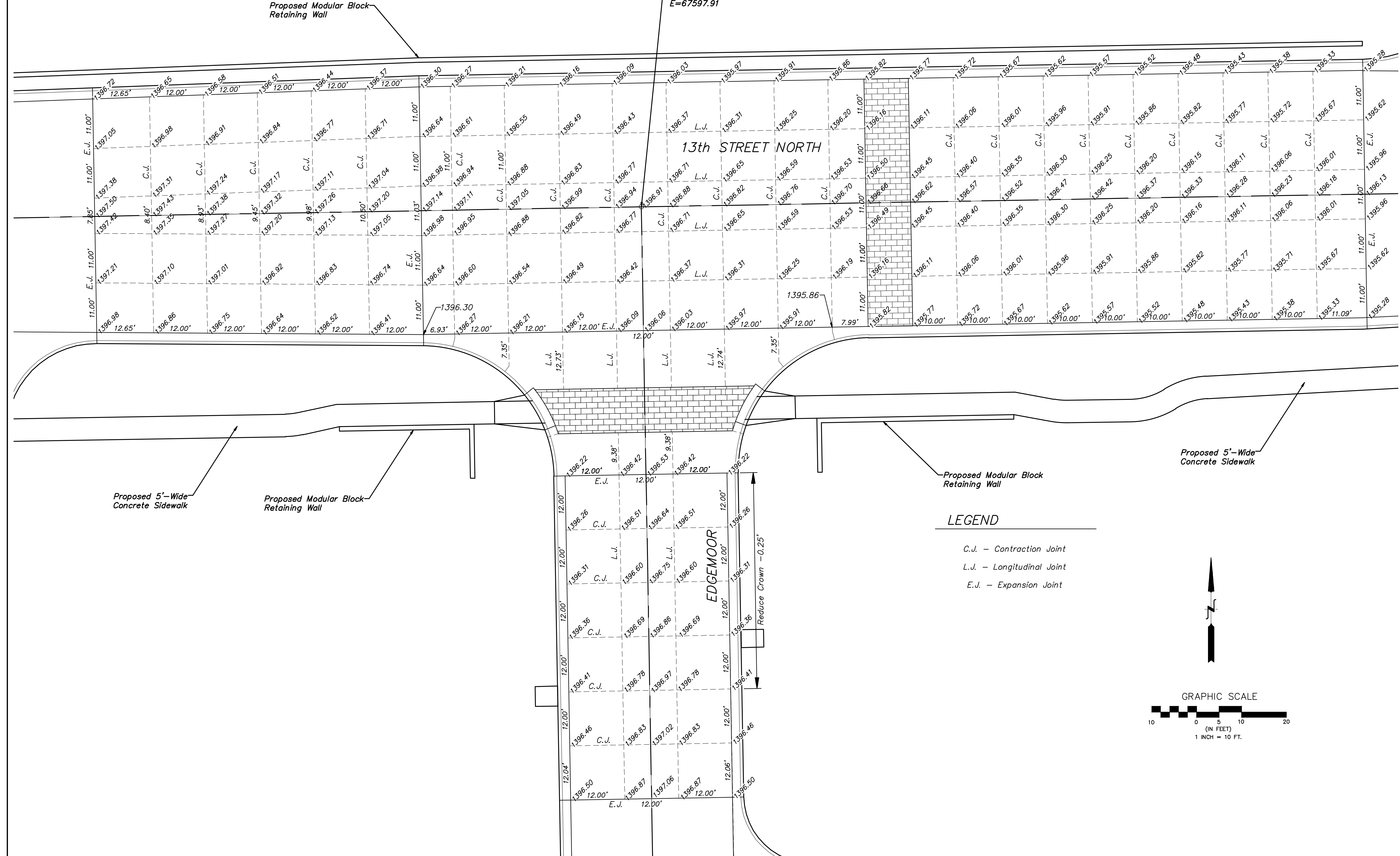


STATE	PROJECT NO.	YEAR	SHEET NO.	TOTAL SHEETS
KANSAS	87N-0582-01	2015	15	59

CL 13th Sta. 15+18.01 =
 CL Edgemoor Sta. 0+00.00
 N=94186.95
 E=67597.91



LEGEND

C.J. - Contraction Joint
 L.J. - Longitudinal Joint
 E.J. - Expansion Joint

	Revision
	Approved
	By
	Date
No.	Date
13TH & EDGEMOOR JOINTING PLAN CITY OF WICHITA, KANSAS GARY JANZEN, P.E. - CITY ENGINEER	
POE & ASSOCIATES, INC. CONSULTING ENGINEERS 544 West Douglas Avenue Wichita, KS 67203 Phone 316.685.4114 FAX 316.685.4444	
FINAL Engineer: J. DICKMAN Designer: J. UNRUH Dwg. P: 102091\102091-Base Job No: 87N-0582-01 Date: 8/31/2015	
Sheet of	59