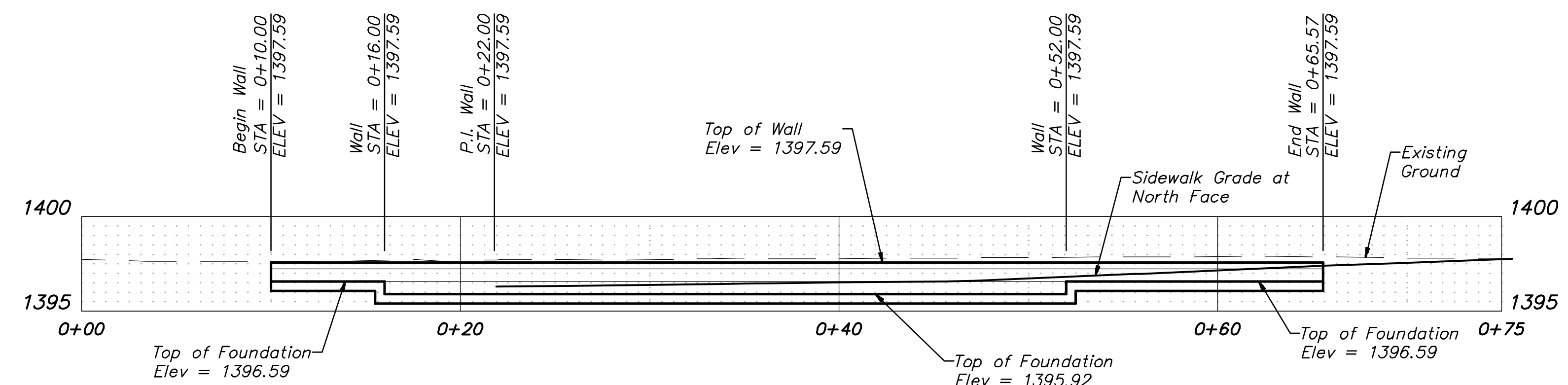
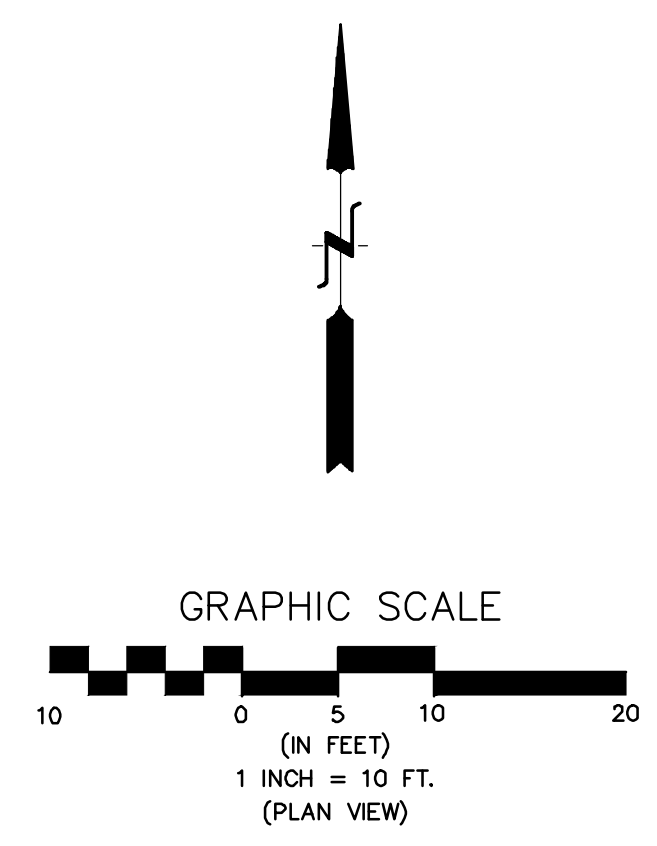
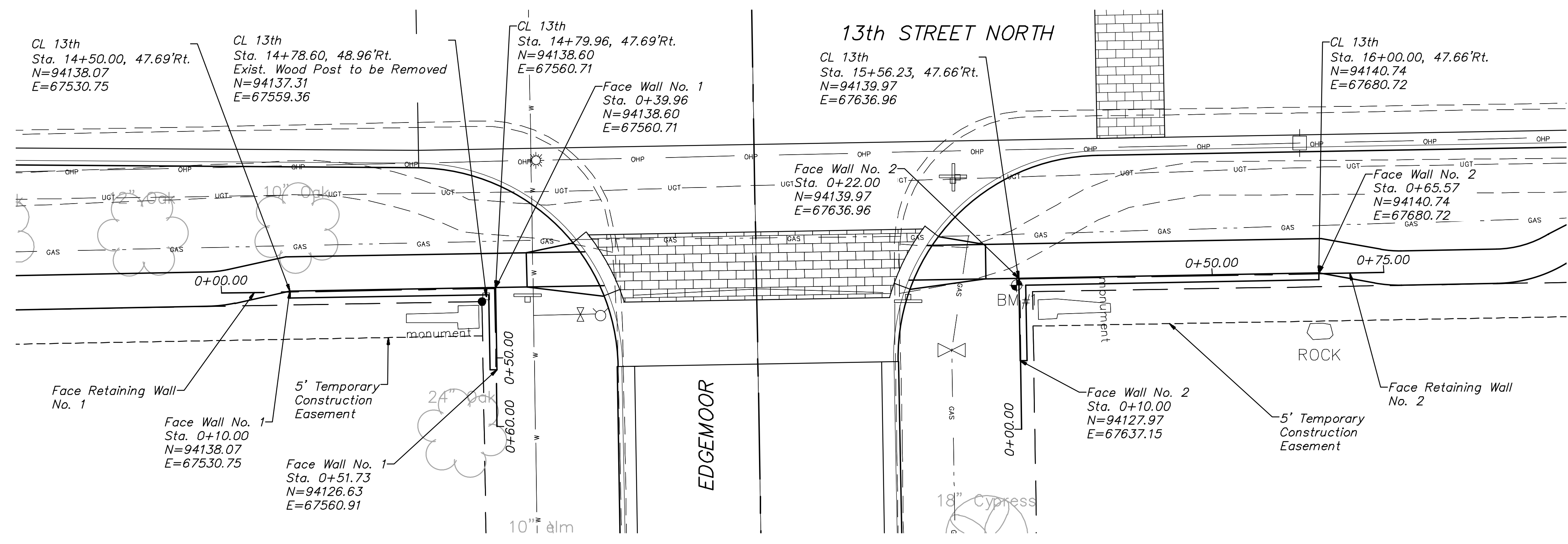
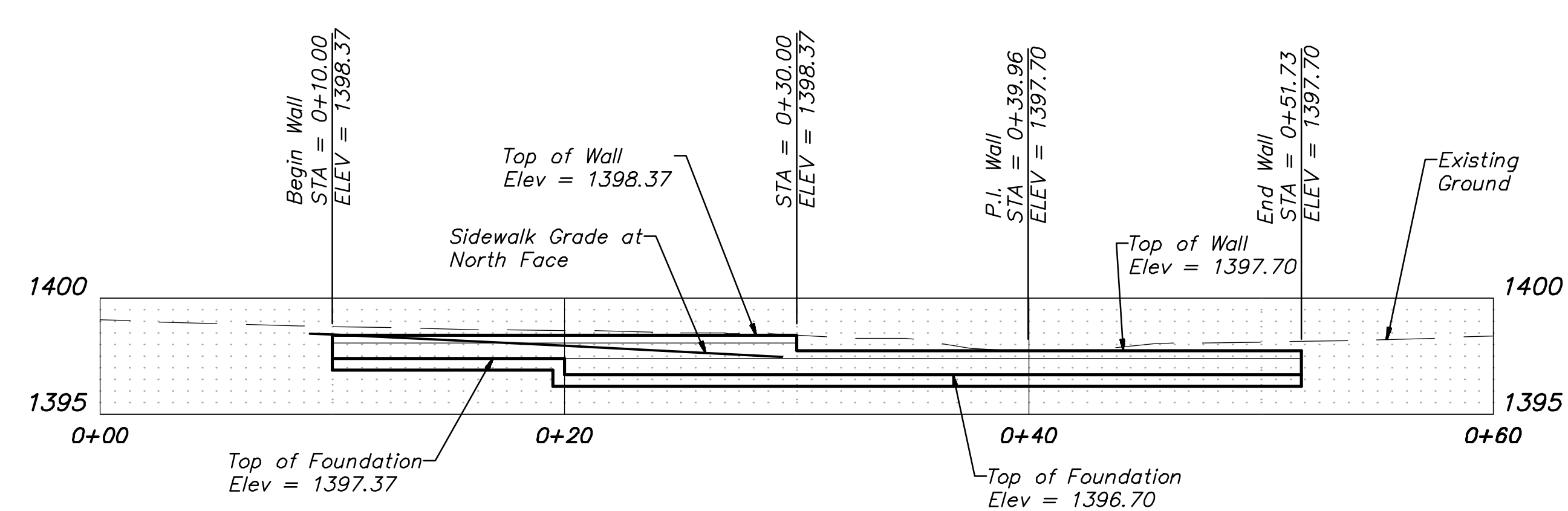


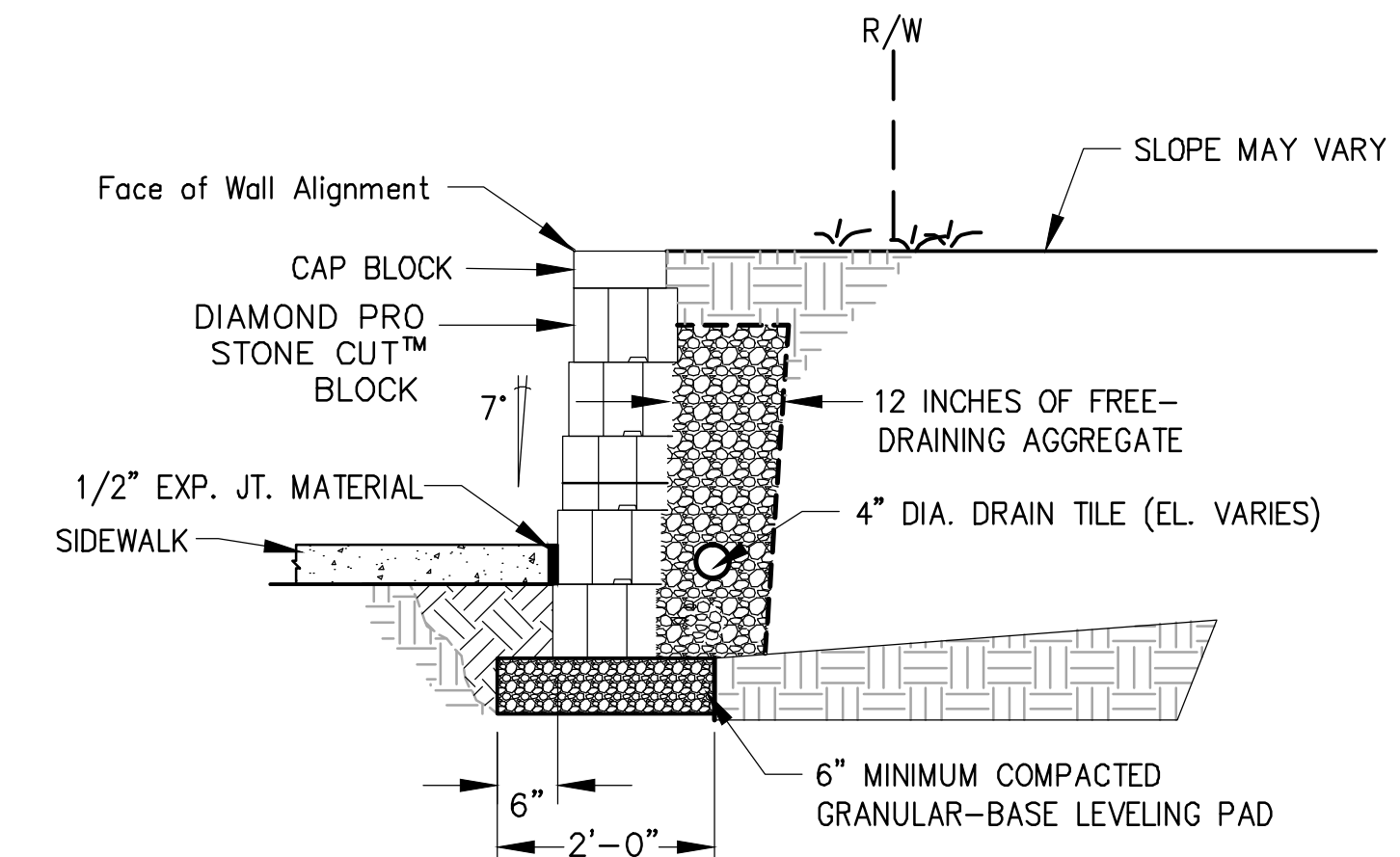
STATE	PROJECT NO.	YEAR	SHEET NO.	TOTAL SHEETS
KANSAS	87N-0582-01	2015	16	59



**MODULAR CONC. RETAINING WALL PROFILE NO. 2**  
CL 13th Street Sta. 15+56.23 to Sta. 16+00.00



**MODULAR CONC. RETAINING WALL PROFILE NO. 1**  
CL 13th Street Sta. 14+50.00 to Sta. 14+79.96



**MODULAR CONC. RETAINING WALL**  
Anchor Diamond Pro Stone Cut Gravity Wall\*  
\*or Approved Equal/Like Product

"Retaining Wall" includes compacted granular material, top soil removal and replacement, adjustment to lighting and irrigation appurtenances and block units. Wall units shall be of the model and manufacture shown or approved equal. The color shall be Ozark Blend (tan and grey blend) or as directed by the Engineer.

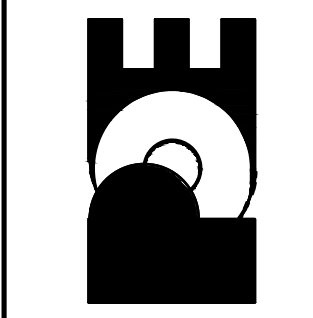
**GENERAL NOTES:**

1. COMPACTION SHALL BE TO MANUFACTURER'S RECOMMENDATIONS.
2. PROVIDE LATERAL DRAINAGE. TURF SHALL BE ESTABLISHED IMMEDIATELY AFTER COMPLETION OF THE RETAINING WALL.
3. ALL MATERIALS AND LABOR REQUIRED TO INSTALL RETAINING WALL SHALL BE CONSIDERED SUBSIDIARY TO THE BID ITEM "MODULAR CONCRETE BLOCK RETAINING WALL".
4. THE AREA OF RETAINING WALL IS MEASURED FROM THE TOP OF FOOTING TO THE TOP OF WALL

No.	Date	By	Approved	Revision

13TH & EDGEWOOD  
**WALL NO. 1 & 2 DETAILS**  
**CITY OF WICHITA, KANSAS**  
GARY JANZEN, P.E. - CITY ENGINEER

**POE & ASSOCIATES, INC.**  
CONSULTING ENGINEERS  
544 West Douglas Avenue | Wichita, KS 67203  
Phone 316.685.4114 | FAX 316.685.4444



**FINAL**  
Engineer: J. DICKMAN  
Designer: J. UNRUH  
Dwg. P.: 102091-102091-Base  
Job No.: 87N-0582-01  
Date: 8/31/2015