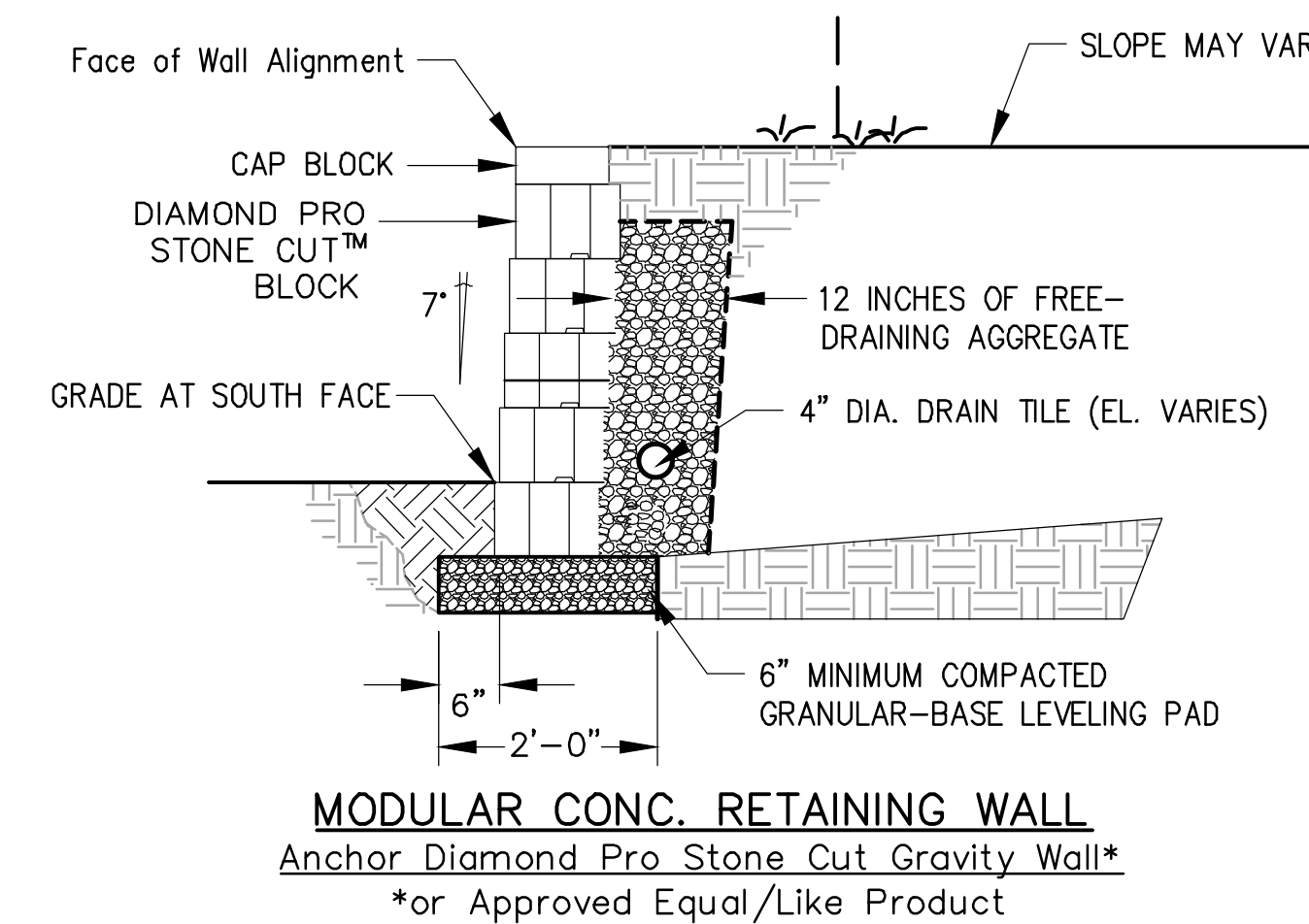
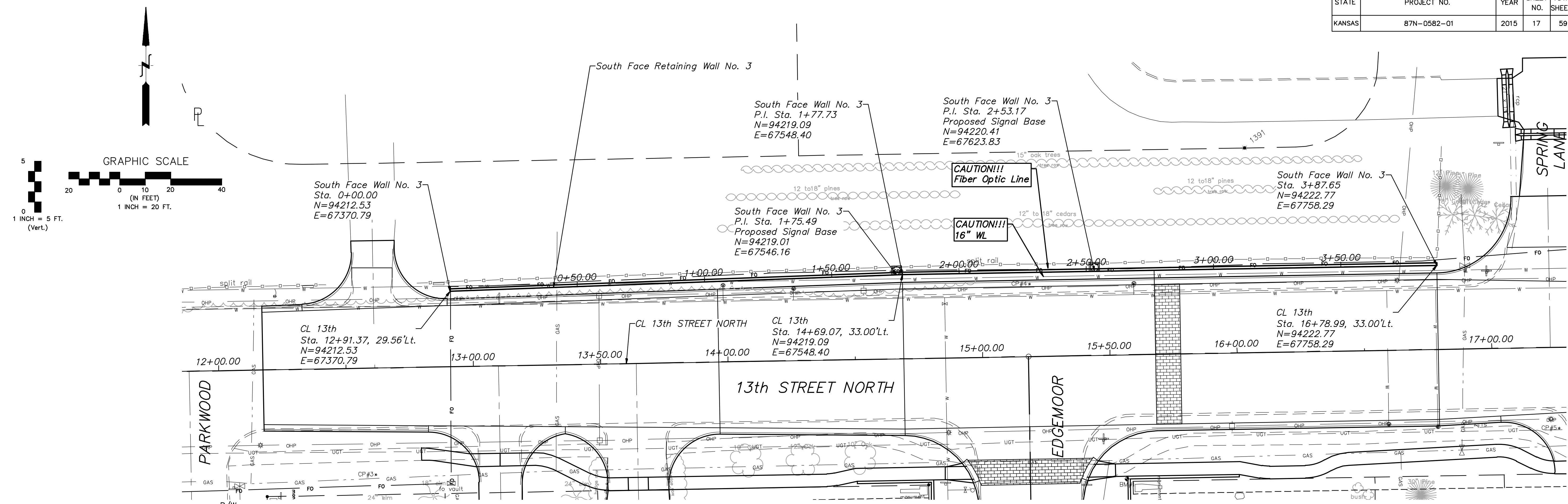
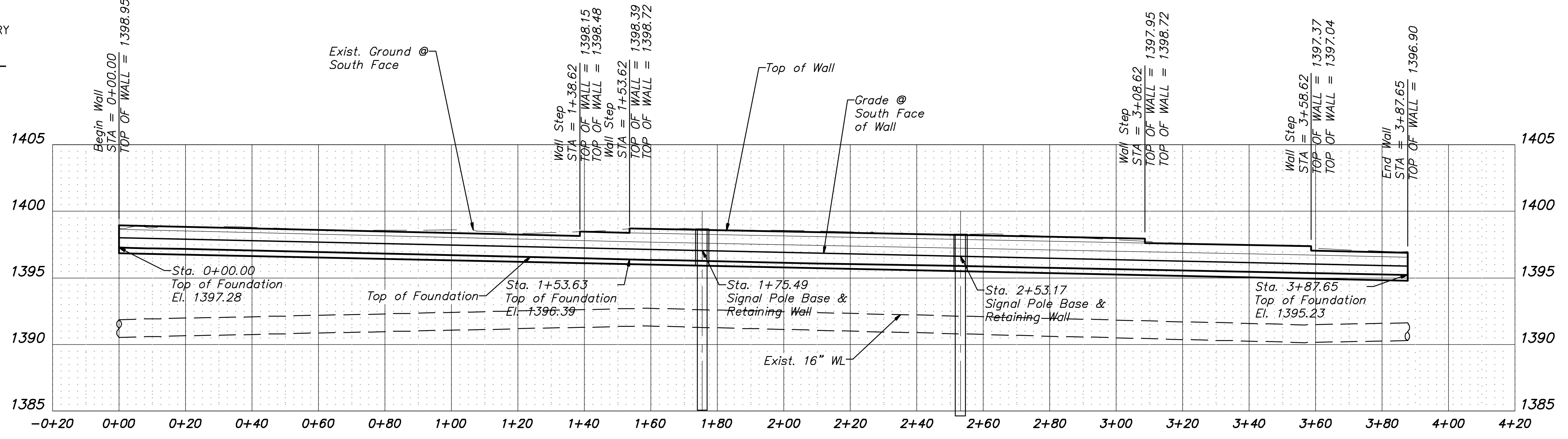


STATE	PROJECT NO.	YEAR	SHEET NO.	TOTAL SHEETS
KANSAS	87N-0582-01	2015	17	59



**MODULAR CONC. RETAINING WALL**  
Anchor Diamond Pro Stone Cut Gravity Wall\*  
\*or Approved Equal/Like Product

"Retaining Wall" includes compacted granular material, top soil removal and replacement, adjustment to lighting and irrigation appurtenances and block units. Wall units shall be of the model and manufacture shown or approved equal. The color shall be Ozark Blend (tan and grey blend) or as directed by the Engineer.



**MODULAR CONC. RETAINING WALL PROFILE NO. 3**  
CL 13th Street Sta. 12+91.37 to Sta. 16+78.99

- GENERAL NOTES:**
1. COMPACTION SHALL BE TO MANUFACTURER'S RECOMMENDATIONS.
  2. PROVIDE LATERAL DRAINAGE. TURF SHALL BE ESTABLISHED IMMEDIATELY AFTER COMPLETION OF THE RETAINING WALL.
  3. ALL MATERIALS AND LABOR REQUIRED TO INSTALL RETAINING WALL SHALL BE CONSIDERED SUBSIDIARY TO THE BID ITEM "MODULAR CONCRETE BLOCK RETAINING WALL".
  4. THE AREA OF RETAINING WALL IS MEASURED FROM THE TOP OF FOOTING TO THE TOP OF WALL.
  5. CONSTRUCT WALL TO MEET SIGNAL POLE BASE RETAINING WALLS, SEE CROSS SECTIONS FOR MORE INFORMATION.

13TH & EDGEWOOD	WALL NO. 3 DETAILS	POE & ASSOCIATES, INC. CONSULTING ENGINEERS 544 West Douglas Avenue   Wichita, KS 67203 Phone 316.685.4114   FAX 316.685.4444	
By: Approved	Date	City of Wichita, Kansas GARY JANZEN, P.E. - CITY ENGINEER	
Revision	No.		

Engineer: J. DICKMAN  
Designer: J. UNRUH  
Dwg. P.: 102091-102091-Base WALL  
Job No.: 87N-0582-01  
Date: 8/31/2015