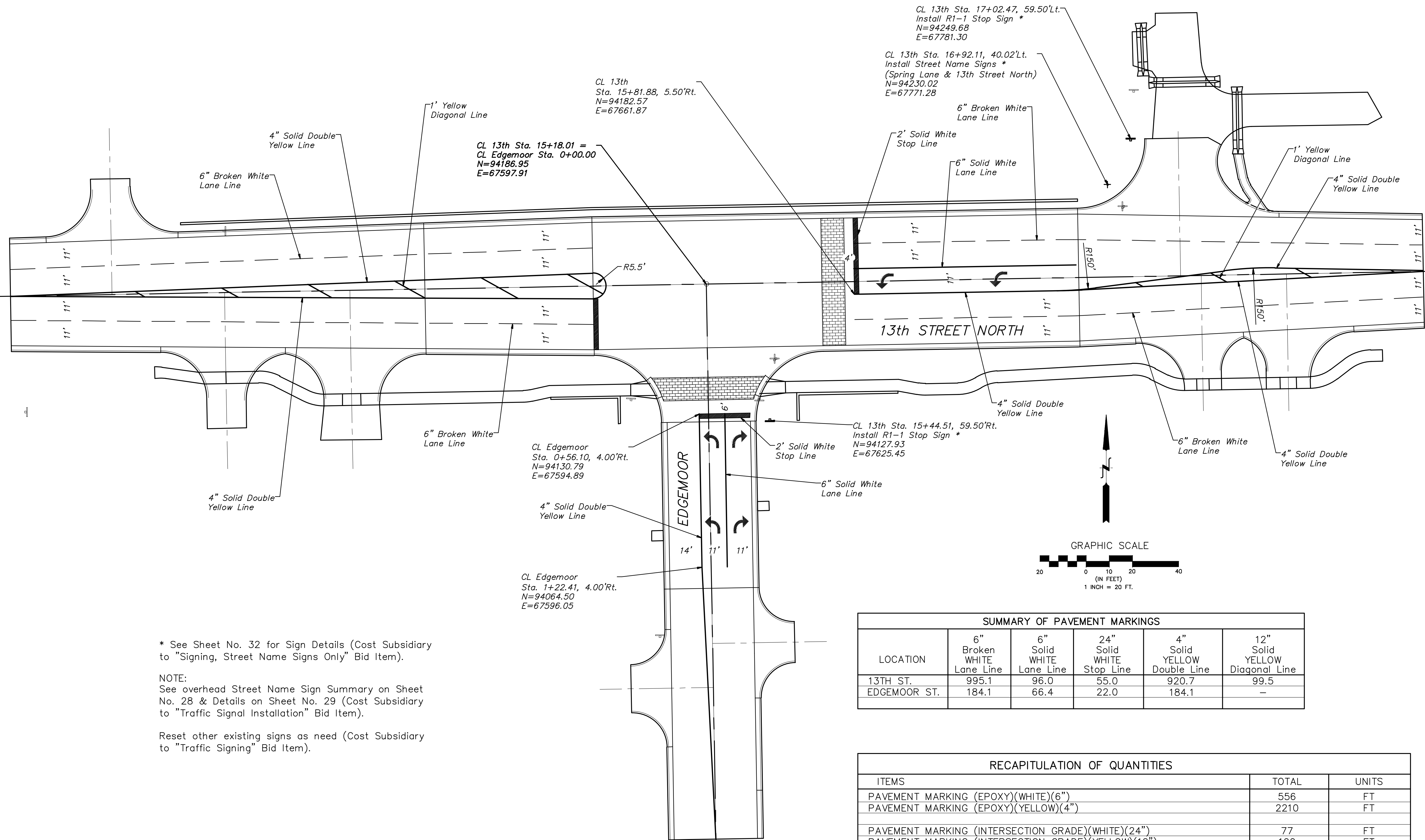


STATE	PROJECT NO.	YEAR	SHEET NO.	TOTAL SHEETS
KANSAS	87N-0582-01	2015	36	59



* See Sheet No. 32 for Sign Details (Cost Subsidiary to "Signing, Street Name Signs Only" Bid Item).

NOTE:
See overhead Street Name Sign Summary on Sheet No. 28 & Details on Sheet No. 29 (Cost Subsidiary to "Traffic Signal Installation" Bid Item).

Reset other existing signs as need (Cost Subsidiary to "Traffic Signing" Bid Item).

LOCATION	6" Broken WHITE Lane Line	6" Solid WHITE Lane Line	24" Solid WHITE Stop Line	4" Solid YELLOW Double Line	12" Solid YELLOW Diagonal Line
13TH ST.	995.1	96.0	55.0	920.7	99.5
EDGEMOOR ST.	184.1	66.4	22.0	184.1	-

ITEMS	TOTAL	UNITS
PAVEMENT MARKING (EPOXY)(WHITE)(6")	556	FT
PAVEMENT MARKING (EPOXY)(YELLOW)(4")	2210	FT
PAVEMENT MARKING (INTERSECTION GRADE)(WHITE)(24")	77	FT
PAVEMENT MARKING (INTERSECTION GRADE)(YELLOW)(12")	100	FT
PAVEMENT MARKING SYMBOL (INTERSECTION GRADE)(LEFT TURN ARROW)	4	EACH
PAVEMENT MARKING SYMBOL (INTERSECTION GRADE)(RIGHT TURN ARROW)	2	EACH

13TH & EDGEMOOR	PAVEMENT MARKING PLAN	POE & ASSOCIATES, INC.	CONSULTING ENGINEERS	544 West Douglas Avenue Wichita, KS 67203 Phone 316/685-4114 FAX 316/685-4444
City of Wichita, Kansas	GARY JANZEN, P.E. - CITY ENGINEER			
Revision	By	Date	No.	Sheet 36 of 59
Approved				Job No. 87N-0582-01
				Date: 8/31/2015