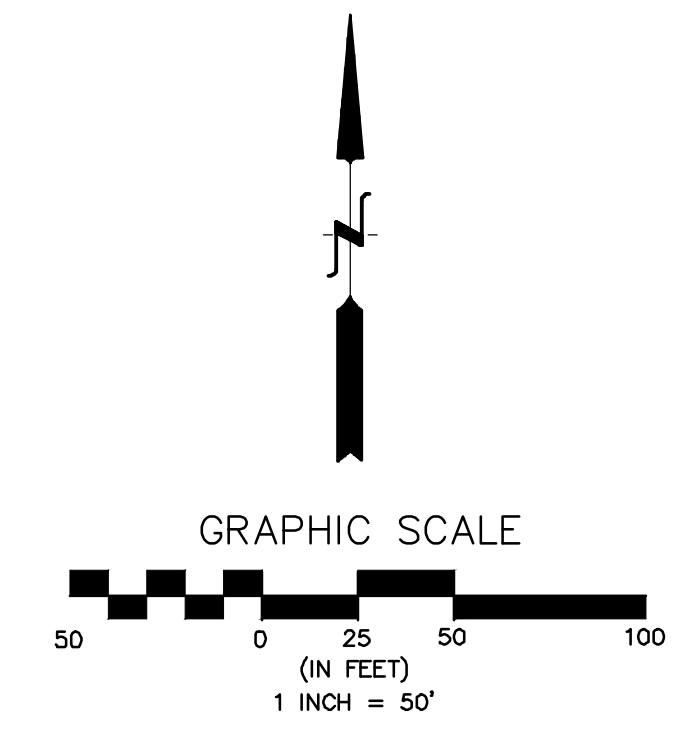
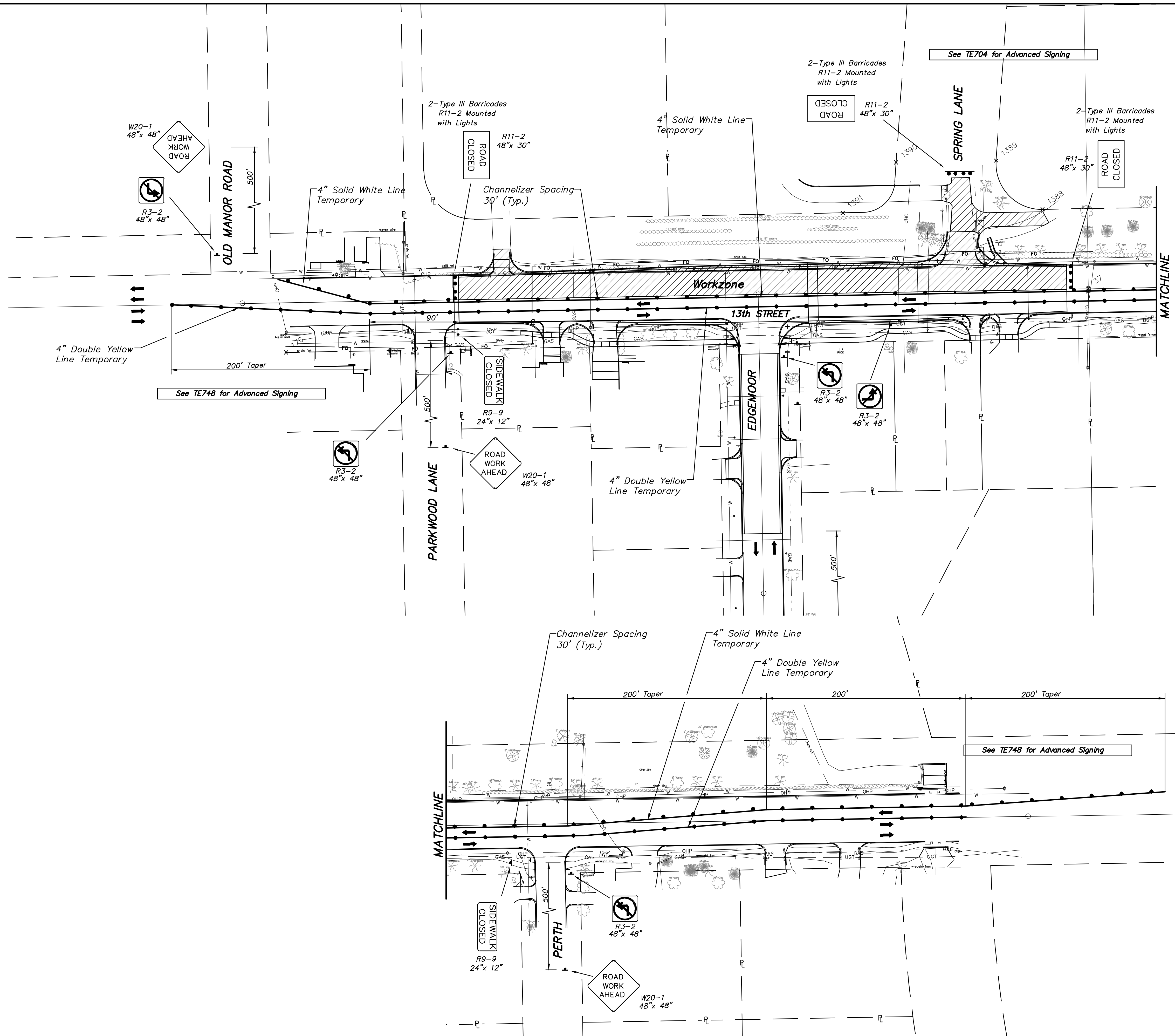


STATE	PROJECT NO.	YEAR	SHEET NO.	TOTAL SHEETS
KANSAS	87N-0582-01	2015	41	59



PHASE 3 - TRAFFIC CONTROL

13TH & EDGEMOOR	TRAFFIC CONTROL PHASE 3	CITY OF WICHITA, KANSAS	GARY JANZEN, P.E. - CITY ENGINEER	C.O.M. Project #472-88162; OCA #707069
POE & ASSOCIATES, INC. CONSULTING ENGINEERS 544 West Douglas Avenue Wichita, KS 67203 Phone 316.685.4114 FAX 316.685.4444				
FINAL	Engineer: J. DICKMAN	Designer: J. UNRUH	Dwg. No.: 87N-0582-01	Date: 8/31/2015
41	Sheet	of	59	