

GENERAL NOTES:

- Contractor will be required to provide notice to utility companies a minimum of twenty-four (24) hours prior to any excavation, as follows:

Kansas One-Call (316)687-2470

The Contractor must notify the following in case of an emergency:

Cox Communications (316)262-4270

or (316)263-2061

Westar Energy/

Kansas Gas & Electric Company (800)482-4950

AT&T 1-555-1212

City of Wichita Water Department (316)268-4908

City of Wichita Sewer Department (316)268-4071

Aquila Natural Gas (316)941-1608

or (800)303-0357

- Exist. utilities and their locations, as shown on the plans, represent the best information attainable for design. Location information has been obtained from the various utility companies and is either from company record drawings or company-provided field locations. The Contractor will be required to work around existing utilities which do not conflict with proposed constructions.

- The Contractor to verify utility locations prior to construction of this project.

- Utility service and installation shall be coordinated with the respective utility owner. Contacts are:

Kansas Gas Service Jim Coe (316)832-3126

Westar Energy Miles Capps (316)261-6251

Aquila Networks Calvin Briggs (316)942-8811

Wichita Water & Sewer Kerry Gibson (316)268-4555

AT&T Jim Toben (316)268-2759

Cox Communications Mark Anaya (316)262-4270

- All lawn/turf areas disturbed by construction of proposed improvements shall be restored with the same grass as existing. Restoration of disturbed areas shall include, but not limited to, soil preparation, fertilizing, seeding, mulching (all seeded areas, outside the limits of erosion mat placement), and/or reseeding, and installation of erosion control mat. All seeding work shall be in accordance with the City of Wichita Standard Specifications and the City of Wichita Administrative Regulations No. AR 6.5 which governs cleanup and respiration or replacement following construction. All cost for the soil preparation, seeding and mulching (all seeded areas, outside the limits of erosion mat placement) shall be paid for through the lump sum bid item for "Seeding." All seeded areas within eight feet of the back of new curb shall be covered with an approved erosion mat, which shall be paid for by the measured quantity bid item "Back of Curb Protection (8' wide)."

- Traffic affected by the construction of this project shall be handled in accordance with the latest edition of the Manual on Uniform Traffic Control Devices.

- It is the contractor's responsibility to visit this site to better understand the extent of site clearing and restoration to be performed. Site Clearing and Restoration shall include all costs for removal of items which a pay item is not provided.

- The contractor shall be responsible for preserving property irons. The contractor will be required to re-establish any property irons which are damaged or destroyed by the construction operations. Such irons shall be re-established by a licensed land surveyor in accordance with state laws.

- Properties within the project limits may have underground sprinkler systems in public right-of-way which conflict with new construction. Contractor will be required to remove such improvements should they not be removed by their owner at the time of construction of the project. The contractor will be required to salvage all sprinkler heads and/or valves and give such material to owner. Portions of underground sprinkler systems not in conflict with new construction shall be protected from damage and shall remain in place. All work in connection with underground sprinkler systems shall be considered as subsidiary to the contract pay items for work.

- Cuts made in paved surfaces on public property will be repaired by the City's Contractor and charged against the contractor. Unit Repair prices are available from the city at 268-4418. A surcharge may be applicable. Call 268-4418 for details. Repair costs to be paid prior to release of utility service if utilities are effected.

Boulder Drive

LOTS 1-4, BLOCK A, STONEY POINTE ADDITION (East of Greenwich, South of 29th Street North)

Project No. 472-84978 OCA: 766325

CITY OF WICHITA, KANSAS

Gary Janzen, P.E., City Engineer



LOCATION MAP
(For Visual Use Only)

INDEX OF SHEETS:

- | | |
|---------|-------------------------|
| 1.0 | Cover Sheet |
| 2.0 | Typical Section |
| 3.0 | Paving Plan |
| 3.1 | Sign Detail |
| 4.0 | SWS Line 1 |
| 5.0 | Control Map/Quantities |
| 6.0 | Erosion Control Plan |
| 6.1-6.5 | Erosion Control Details |
| 7.0 | Cross Sections |
| 8.0 | Copy of Plat |

BENEFIT DISTRICTS:

Benefit Area

BENCHMARK:

Top of "T" Post 129.17' East and 1177.81'
North of W. 1/4, COR, Sec 3, T27S, R2E,
6TH P.M.
Elev. = 1376.51 NAVD88

Project Length:

Boulder Drive 315 L.F.

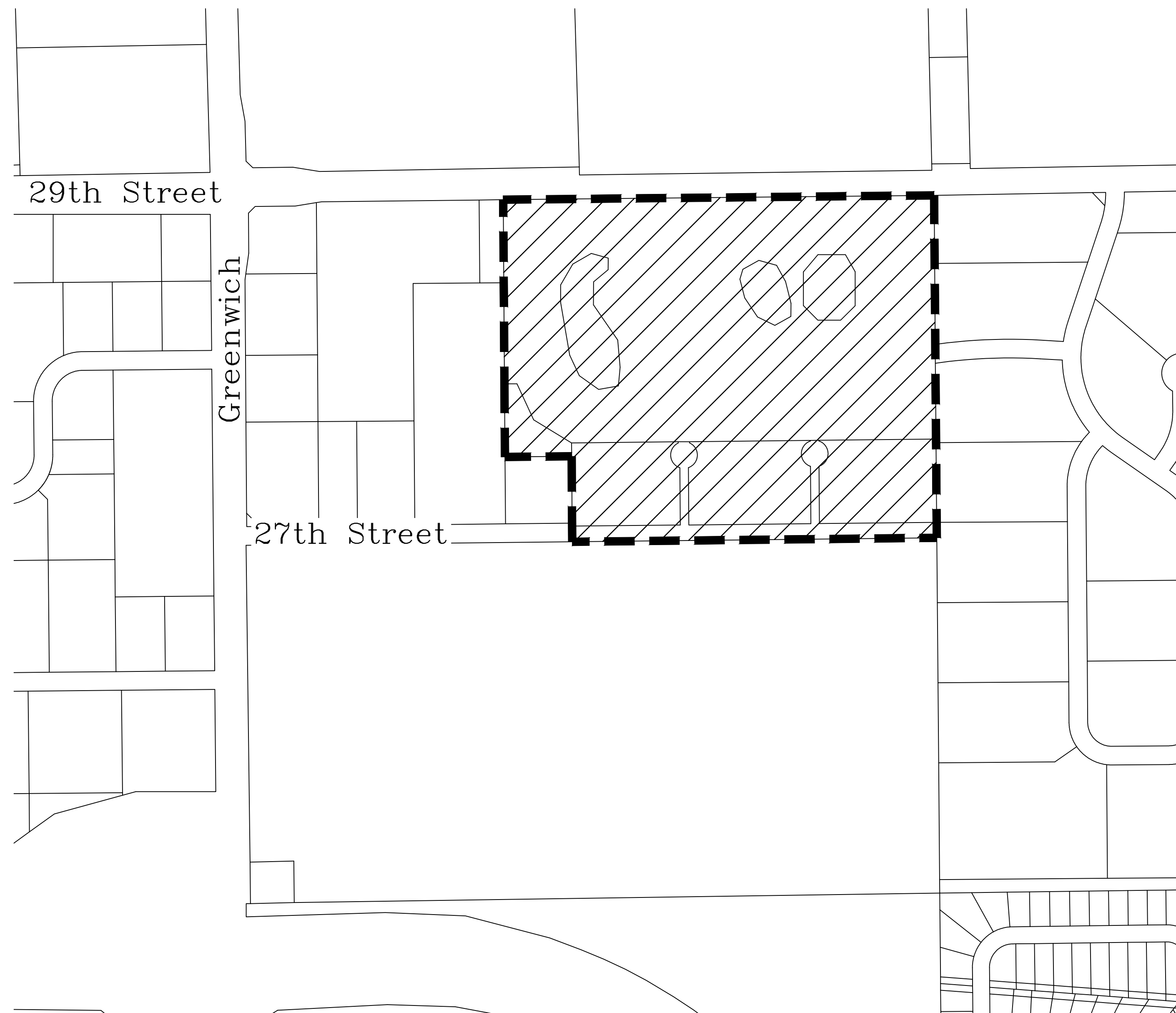
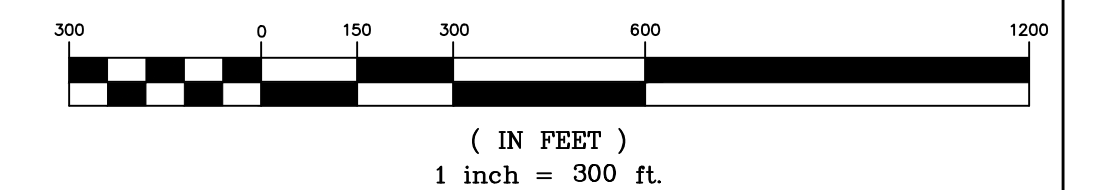
Earthwork Summary:

Excavation = 820 C.Y.

Compacted Fill 90% = 3308 C.Y.

Compacted Fill 95% = 3212 C.Y.

Note: Contractor is responsible for wasting the excess material offsite.



January 2015

KEMILLER
ENGINEERING PA

117 E. Lewis, Wichita, KS 67202 (316)264-0242