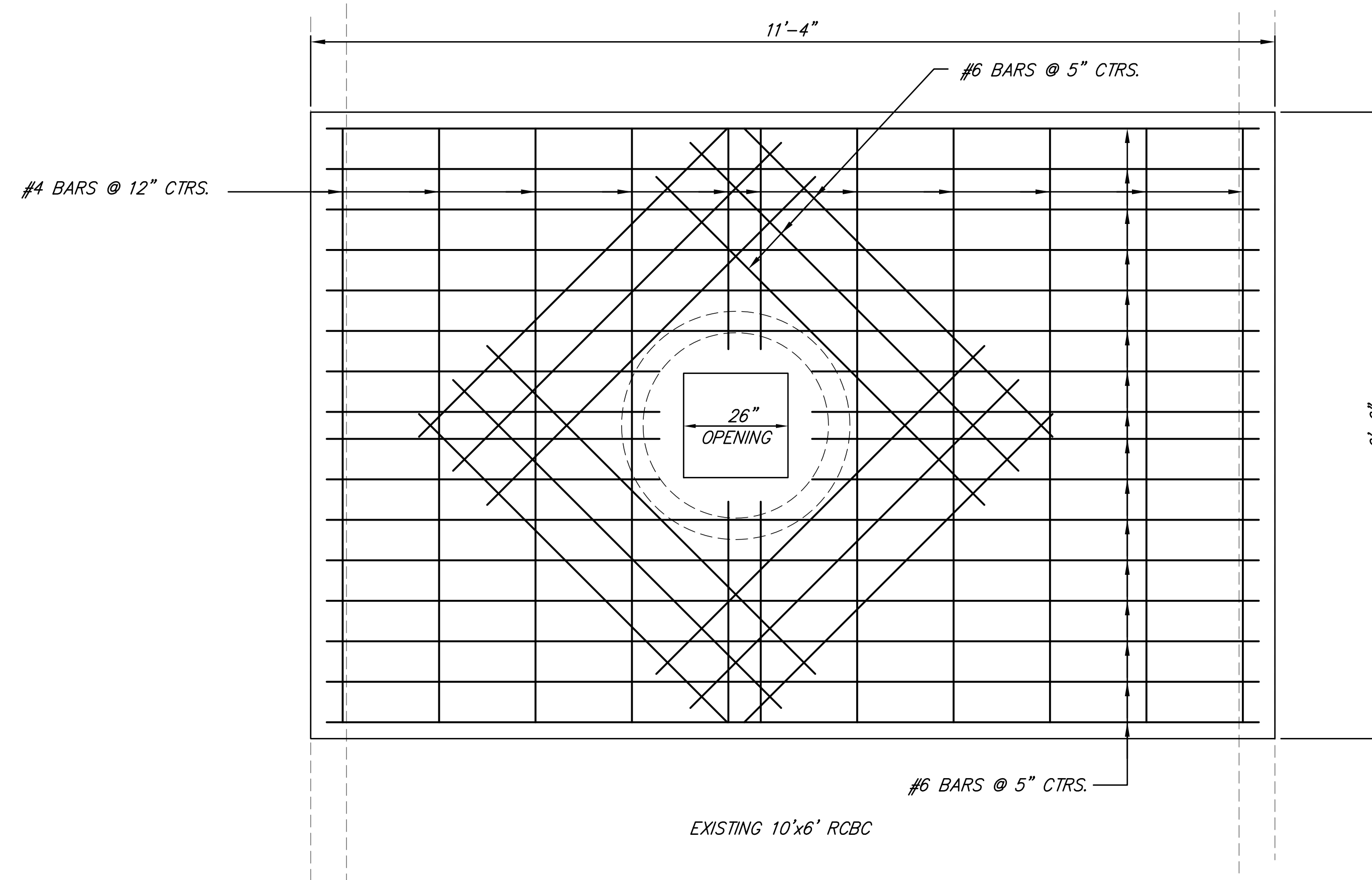



SECTION THROUGH BOX AND MANHOLE



PLAN VIEW OF DISTRIBUTION SLAB

GENERAL NOTES

1. ALL MANHOLE CONSTRUCTION SHALL BE WATER TIGHT.
2. REINFORCING STEEL SHALL BE GRADE 60
3. THE RCBC TOP SHALL BE THOROUGHLY CLEANED PRIOR TO PLACING SLAB
4. ALL PRECAST CONCRETE MANHOLE SECTIONS SHALL CONFORM TO THE LATEST REVISION OF ASTM C-478 AS MODIFIED BY THE SPECIFICATIONS.
5. CONCRETE USED FOR MANHOLE CONSTRUCTION SHALL CONFORM TO CITY OF WICHITA SPECIFICATIONS FOR CONCRETE PAVEMENT MIX.
6. CONSTRUCT DISTRIBUTION SLAB OVER THE ENTIRE WIDTH OF THE EXTERIOR WALLS OF THE BARREL
7. CONTRACTOR SHALL REMOVE LIFTING HOOKS AFTER INSTALLATION. RECESSES IN MANHOLE WALL SHALL BE GROUTED FLUSH TO THE MANHOLE WALL WITH HYDRAULIC CEMENT AFTER THE MANHOLE IS IN PLACE. LIFTING HOLES THRU THE MANHOLE WALL WILL NOT BE ACCEPTED.
8. MANHOLE FRAME AND COVER TO BE DEETER #1261, EUJW #1936-Z1, OR APPROVED EQUAL, SEE SW-303.

Dora Avenue & Everett Avenue MH DETAIL			
SEAL 	 RUGGLES & BOHM <small>ENGINEERING SURVEYING LANDSCAPE ARCHITECTURE GOVERNMENT</small> <small>924 NORTH MAIN WICHITA, KANSAS 67203 P (316) 264-8008 F (316) 264-4623 WWW.RBKANSAS.COM</small>	DATE 8/19/2015 DESIGN ... DRAWN ... REVIEW ... 7/7/2015	SHEET 15 OF 27
PROJECT NUMBER 472-85194	RB JOB NO. 4502T	DWG. SCALE ...	
DRAWING FILE MH DETAIL [MH DETAIL]			