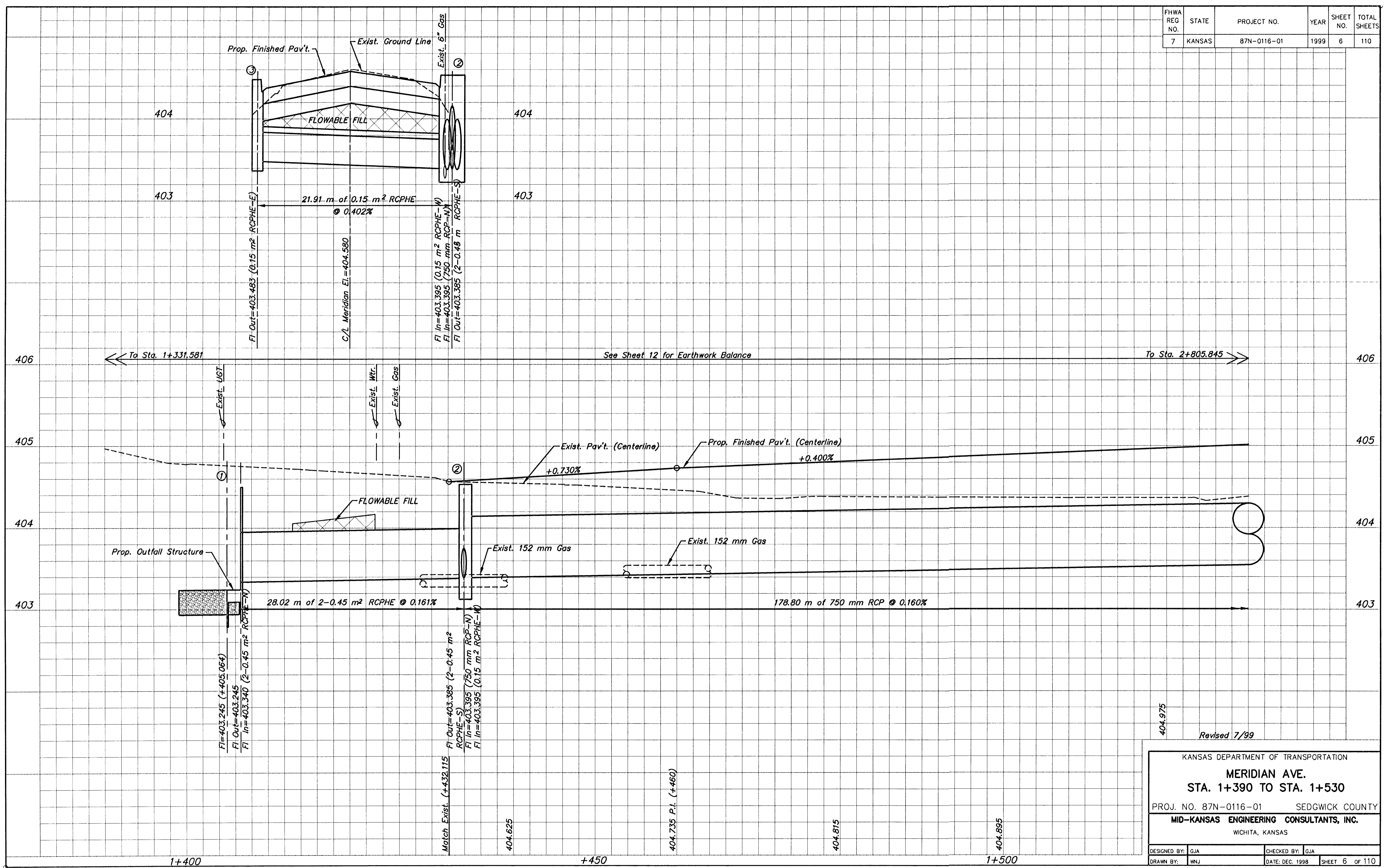


FHWA REG. NO.	STATE	PROJECT NO.	YEAR	SHEET NO.	TOTAL SHEETS
7	KANSAS	87N-0116-01	1999	6	110



404.975

Revised 7/99

KANSAS DEPARTMENT OF TRANSPORTATION
MERIDIAN AVE.
STA. 1+390 TO STA. 1+530
 PROJ. NO. 87N-0116-01 SEDGWICK COUNTY
MID-KANSAS ENGINEERING CONSULTANTS, INC.
 WICHITA, KANSAS

DESIGNED BY: GJA	CHECKED BY: GJA
DRAWN BY: WNJ	DATE: DEC. 1998

SHEET 6 OF 110

K:\CIVIL\97043\REV\1510\PROF\7043PR2.DWG P1, Aug 06 13:37:43 1999