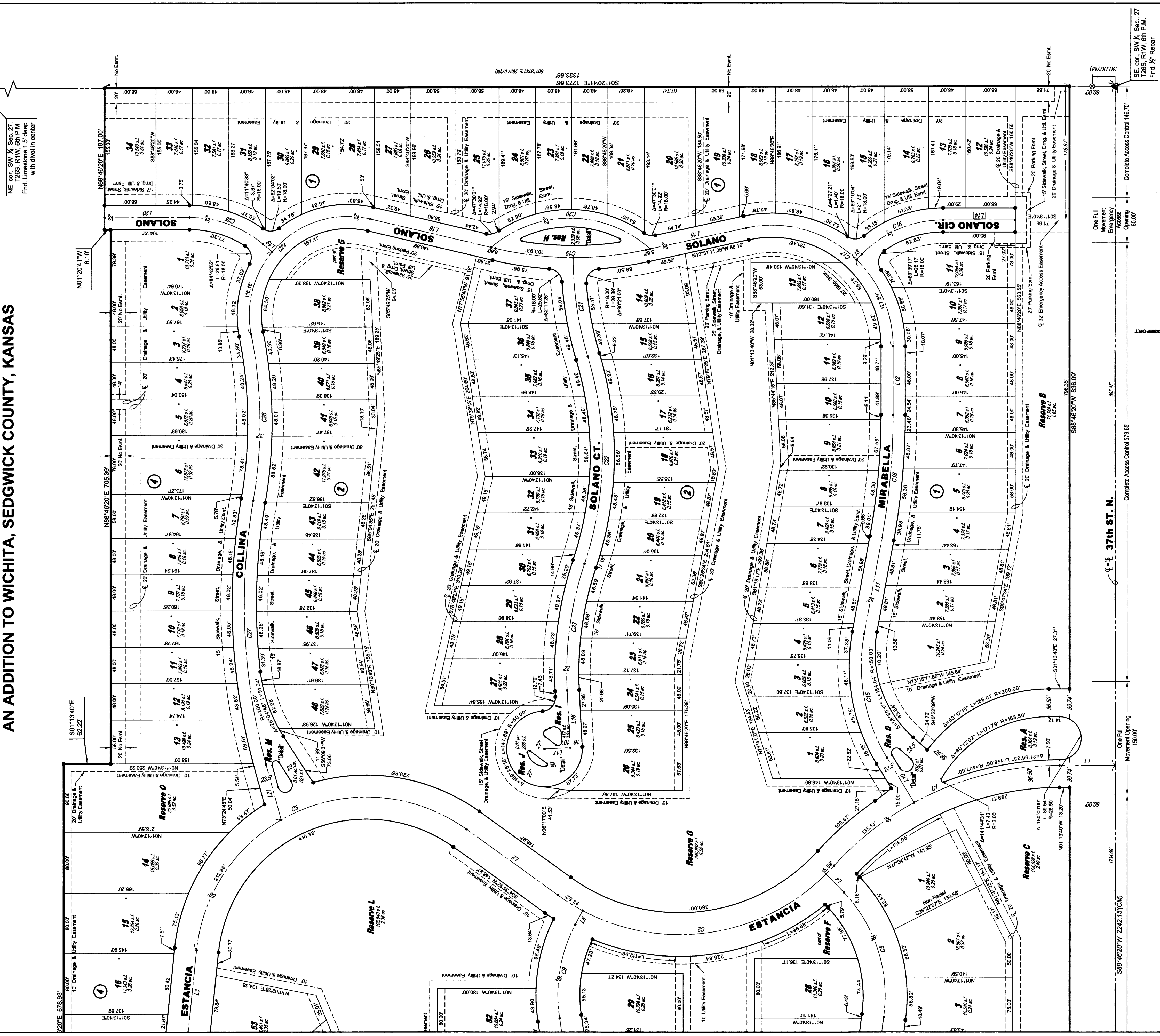


FINAL PLAT

ESTANCIA ADDITION

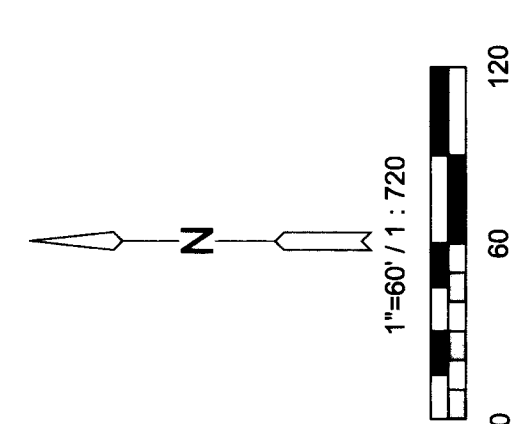
AN ADDITION TO WICHITA, SEDGWICK COUNTY, KANSAS



NE 1/4 SW 1/4 Sec. 27, T26S, R1W, S6M, Find Limestone 1.5' deep with diavol in center

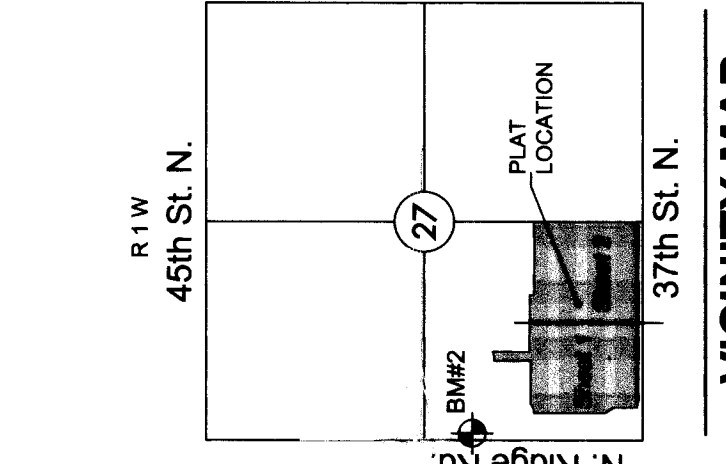
SE cor., SW 1/4, Sec. 27, T26S, R1W, 6th P.M. Frd. 1/2 Rebar

- LEGEND**
Date of Survey: April 29, 2015
- ▲ = Section corner monument found
 - = Found 3/4 rebar w/ MKEC CLS 39 M. cap
 - ⊙ = Set 3/4 rebar w/ MKEC CLS 39 M. cap
 - (M) = Measured
 - (CM) = Calculated from measured
 - (D) = Described
 - ⊕ = Benchmark
 - U.E. = Utility Easement
 - D.E. = Drainage Easement



MINIMUM PAD ELEVATIONS (LOWEST OPENINGS)

LOTS	BLOCK ELEVATION	MIN. PAD
1-48	2	1334.1
5, 6, 13, 14, 4	4	1334.1



BENCHMARK

BMFS Square top of curb on west side of median island and 10 feet north of the south end of said median lying south of K-96 and Ridge Rd. being 338 feet S. of the NW corner SW 1/4, Sec. 27, T26S, R1W, 6th P.M. Elev. = 1335.00 NAVD83

Basis of Bearing: Kansas coordinate system of 1983 south zone grid bearing of N88°46'20"E on the south of the SW 1/4, Sec. 27, T26S, R1W, 6th P.M. This plat is surveyed and platted on NAD83 using Kansas state plane south zone coordinates, modified to the surface, having a combined adjustment scale factor of 1.000120014401728

