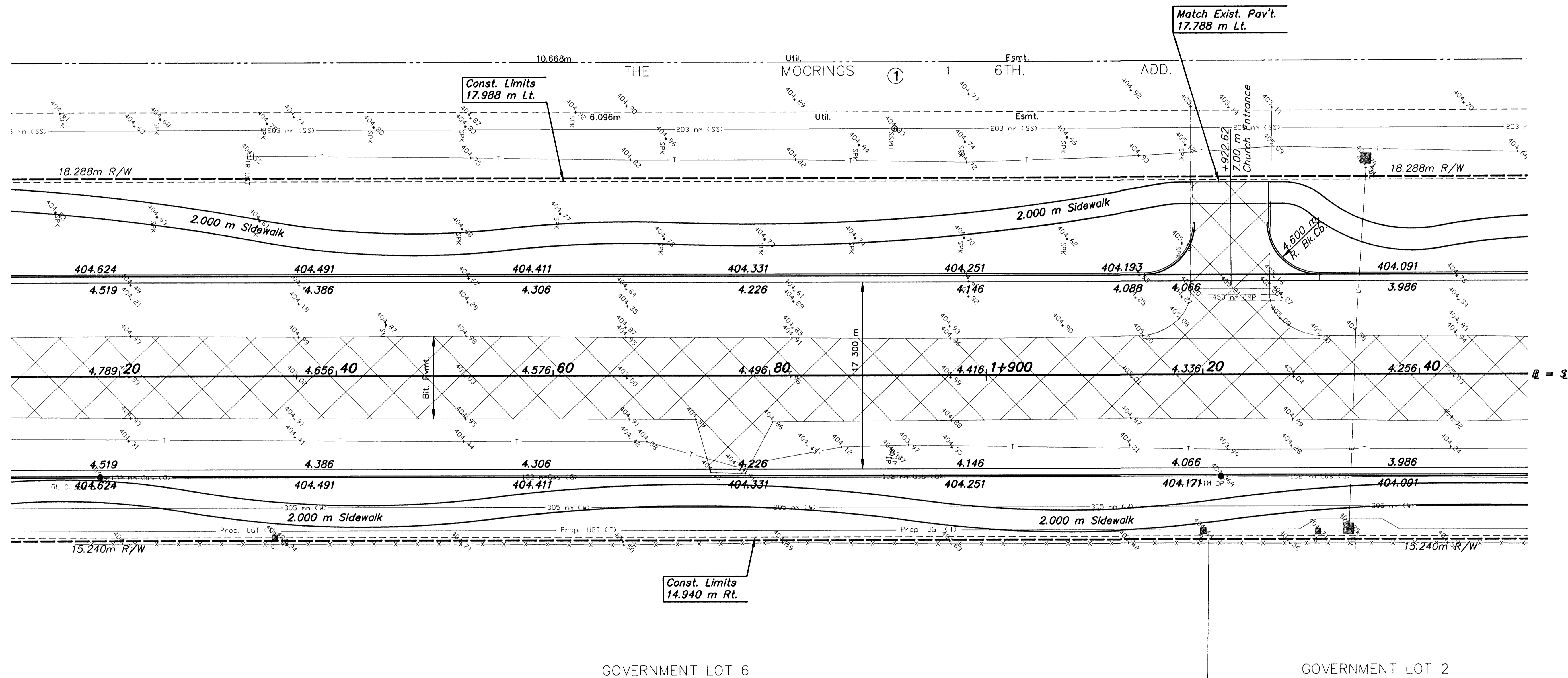


FHWA REG. NO.	STATE	PROJECT NO.	YEAR	SHEET NO.	TOTAL SHEETS
7	KANSAS	87N-0116-01	1999	11	110

DATE	
BY	
REFERENCES NOTED	
REFERENCES CHECKED	



Const. Limits
14.940 m Rt.

Match Exist. Pav't.
17.788 m Lt.

GOVERNMENT LOT 6

GOVERNMENT LOT 2

Legend

Pavement, Median, Driveway and/or Sidewalk Removal

- UTILITY OWNERS**
- CATV - Multimedia Cablevision (316)262-4270
 - G - Kansas Gas Service (316)832-3168
 - E - KGE (316)261-6944
 - SS - City of Wichita Water & Sewer Dept. (316)268-4908
 - SWS - City of Wichita Water & Sewer Dept. (316)268-4908
 - T - Southwestern Bell Telephone Co. 1-800-734-7590
 - W - City of Wichita Water & Sewer Dept. (316)268-4908

2				
1	7/99	PAVEMENT WIDENING	WNJ	DCH
NO.	DATE	REVISIONS	BY	APP'D
KANSAS DEPARTMENT OF TRANSPORTATION				
MERIDIAN AVE.				
STA. 1+810 TO STA.1+950				
PROJ. NO. 87N-0116-01		SEDGWICK COUNTY		
MID-KANSAS ENGINEERING CONSULTANTS, INC.				
WICHITA, KANSAS				
DESIGNED BY:	GJA	CHECKED BY:	GJA	
DRAWN BY:	WNJ	DATE:	DEC. 1998	SHEET 11 OF 110

K:\CTV\197043\VISION\PAV\97043_L5.DWG F:\Aug 06 13:35:48 1999

K:\CTV\197043\PAV\97043_L5.DWG