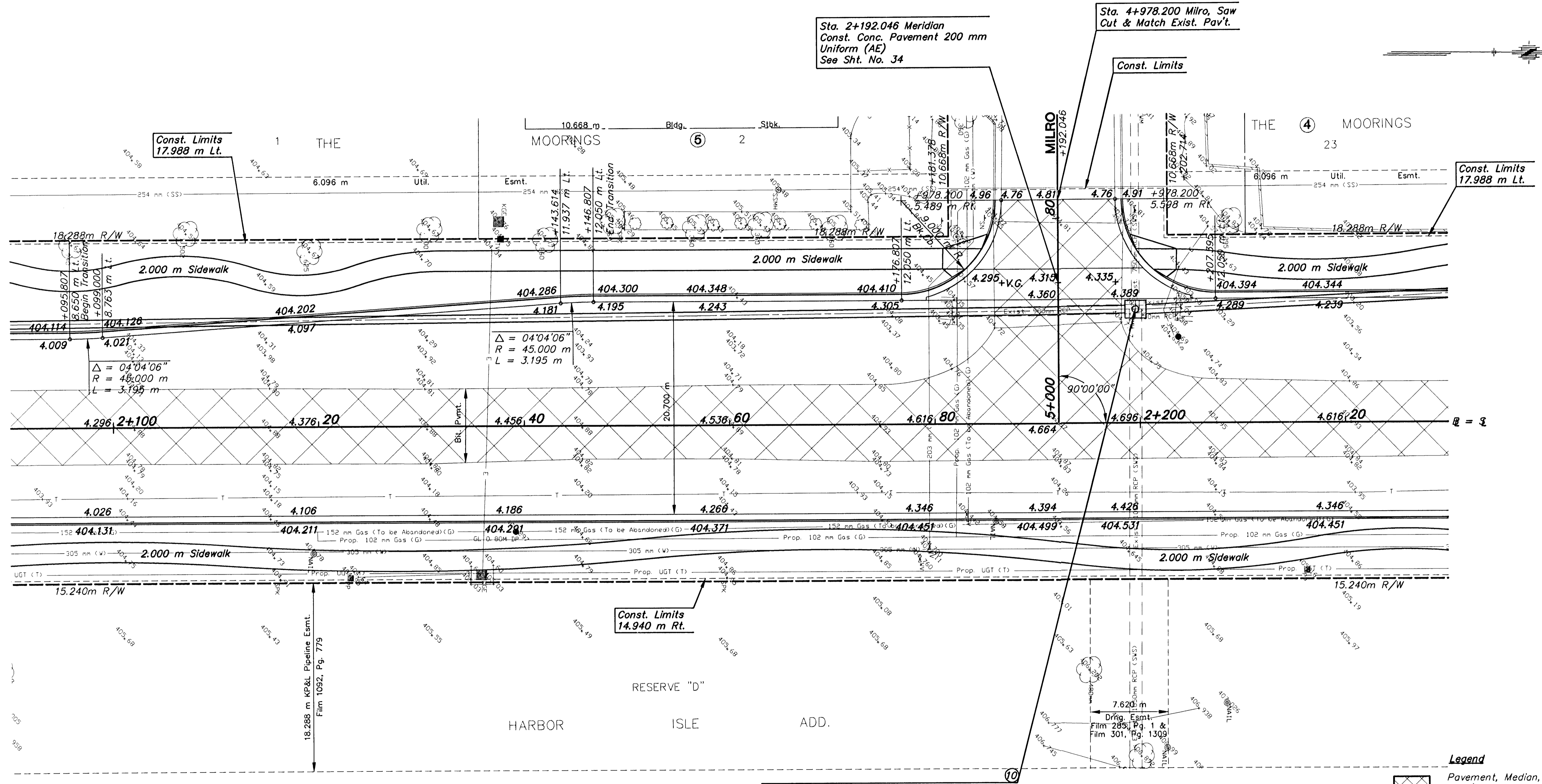


DATE	
BY	
REFERENCES NOTED	
REFERENCES CHECKED	



Sta. 2+192.046 Meridian
Const. Conc. Pavement 200 mm
Uniform (AE)
See Sht. No. 34

Sta. 4+978.200 Milro, Saw
Cut & Match Exist. Pav't.

Const. Limits
17.988 m Lt.

Const. Limits
17.988 m Lt.

Const. Limits
14.940 m Rt.

$\Delta = 04'04'06''$
 $R = 45.000$ m
 $L = 3.195$ m

$\Delta = 04'04'06''$
 $R = 45.000$ m
 $L = 3.195$ m

Sta. 2+199.570 Meridian, Remove
Existing Manhole. Construct
Reinf. Conc. Manhole, 11.027 m Lt.
 $L=2.060$ m, $W=1.730$ m
Manhole Top=404.414
Install 900 mm x 49.28 m Storm Swr. (RCP)(N)
See Sht. No. 42, 46, 47

BM #4 "L" Cut on top of S. curb Milo St.
Sta. 2+185.85
40.26 m Lt. Elev.=404.869

UTILITY OWNERS

- CATV - Multimedia Cablevision (316)262-4270
- G - Kansas Gas Service (316)832-3168
- E - KGE (316)261-6944
- SS - City of Wichita Water & Sewer Dept. (316)268-4908
- SWS - City of Wichita Water & Sewer Dept. (316)268-4908
- T - Southwestern Bell Telephone Co. 1-800-734-7590
- W - City of Wichita Water & Sewer Dept. (316)268-4908

ADJUST VALVE BOX					
STATION	OFFSET (m)	DESCRIPTION	EXIST. ELEV.	PROP. ELEV.	REMARKS
2+178.5	13.1 RT.	WV	404.76	404.68	
2+179.4	11.9 RT.	WV	404.70	404.57	
2+182.7	18.3 LT.	WV	404.66	404.60	

Legend

Pavement, Median, Driveway and/or Sidewalk Removal

2					
1	7/99	PAVEMENT WIDENING	WNJ	DCH	
NO.	DATE	REVISIONS	BY	APP'D	
KANSAS DEPARTMENT OF TRANSPORTATION					
MERIDIAN AVE.					
STA. 2+090 TO STA. 2+230					
PROJ. NO. 87N-0116-01			SEDGWICK COUNTY		
MID-KANSAS ENGINEERING CONSULTANTS, INC.					
WICHITA, KANSAS					
DESIGNED BY:	GJA	CHECKED BY:	GJA		
DRAWN BY:	WNJ	DATE:	DEC. 1998	SHEET 15 OF 110	