

FHWA REG NO.	STATE	PROJECT NO.	YEAR	SHEET NO	TOTAL SHEETS
7	KANSAS	87N-0116-01	1999	17	110

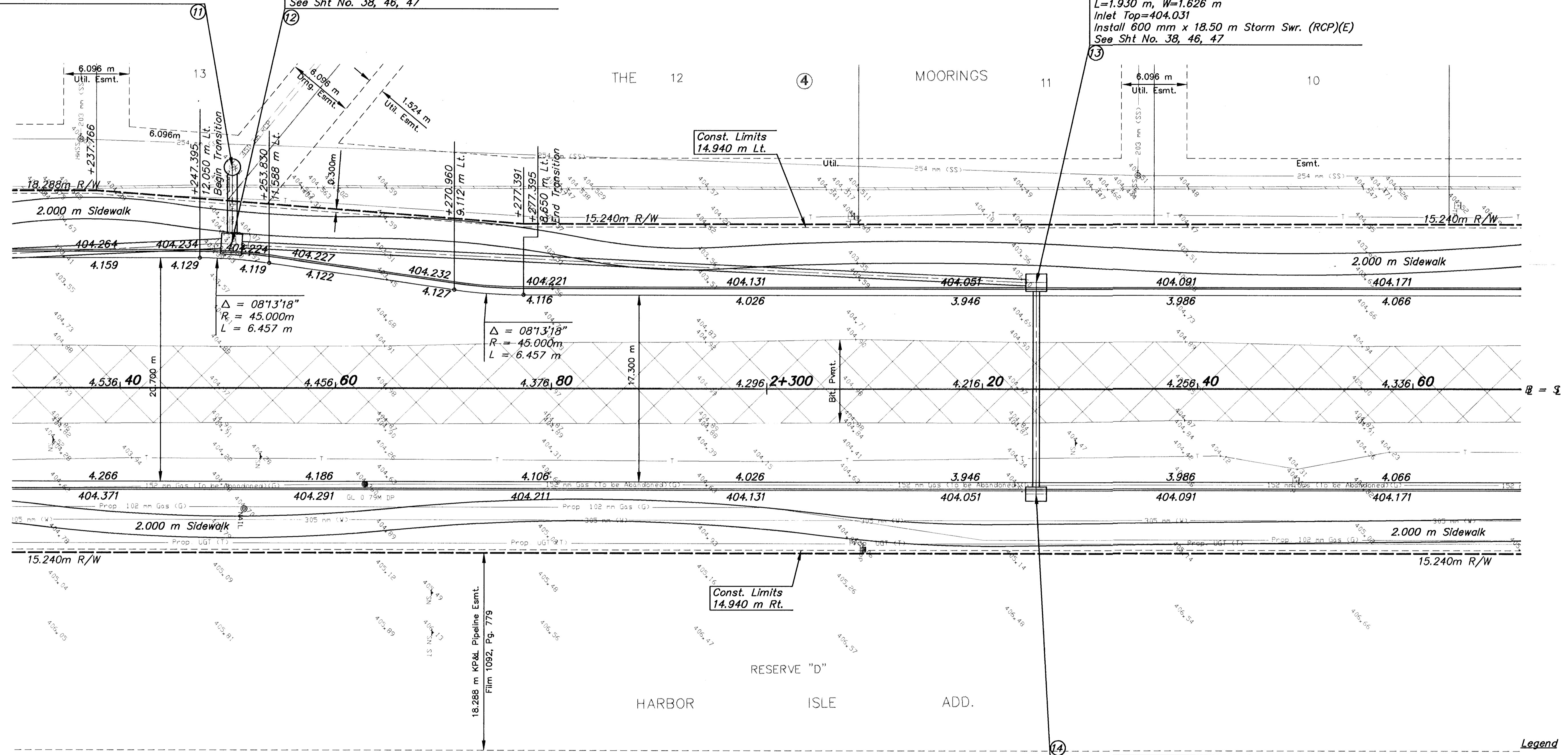
Sta. 2+250.411 Meridian, Remove Existing Manhole. Construct Special Manhole (Type A), 20.447 m Lt. Dia.=1.524 m
 Manhole Top=404.729
 Install 900 mm x 5.61 m Storm Swr. (RCP)(E)
 Remove Existing 450 mm RCP (E)
 Connect Existing 450 mm RCP (W) to Manhole
 See Sht. No. 43, 46, 47

Sta. 2+250.349 Meridian, Construct Curb Inlet (Type 1), 13.316 m Lt. L=1.930 m, W=1.930 m
 Inlet Top=404.226
 Install 600 mm x 73.21 m Storm Swr. (RCP)(N)
 See Sht. No. 38, 46, 47

Note:
 Grade Parking Left as Required to Drain Existing Easement

Sta. 2+325.000 Meridian, Construct Curb Inlet (Type 1), 9.858 m Lt. L=1.930 m, W=1.626 m
 Inlet Top=404.031
 Install 600 mm x 18.50 m Storm Swr. (RCP)(E)
 See Sht. No. 38, 46, 47

BY	DATE
REFERENCES NOTED	
REFERENCES CHECKED	



Legend
 Pavement, Median, Driveway and/or Sidewalk Removal

1A
 Sta. 2+325.000 Meridian, Construct Curb Inlet (Type 1), 9.705 m Lt. L=1.930 m, W=1.321 m
 Inlet Top=404.031
 See Sht. No. 38, 46, 47

- UTILITY OWNERS**
- CATV - Multimedia Cablevision (316)262-4270
 - G - Kansas Gas Service (316)832-3168
 - E - KGE (316)261-6944
 - SS - City of Wichita Water & Sewer Dept. (316)268-4908
 - SWS - City of Wichita Water & Sewer Dept. (316)268-4908
 - T - Southwestern Bell Telephone Co. 1-800-734-7590
 - W - City of Wichita Water & Sewer Dept. (316)268-4908

2				
1				
NO.	DATE	REVISIONS	BY	APP'D

KANSAS DEPARTMENT OF TRANSPORTATION
MERIDIAN AVE.
STA. 2+230 TO STA. 2+370
 PROJ. NO. 87N-0116-01 SEDGWICK COUNTY
MID-KANSAS ENGINEERING CONSULTANTS, INC.
 WICHITA, KANSAS

DESIGNED BY: GJA	CHECKED BY: GJA
DRAWN BY: WNJ	DATE: DEC. 1998

SHEET 17 OF 110