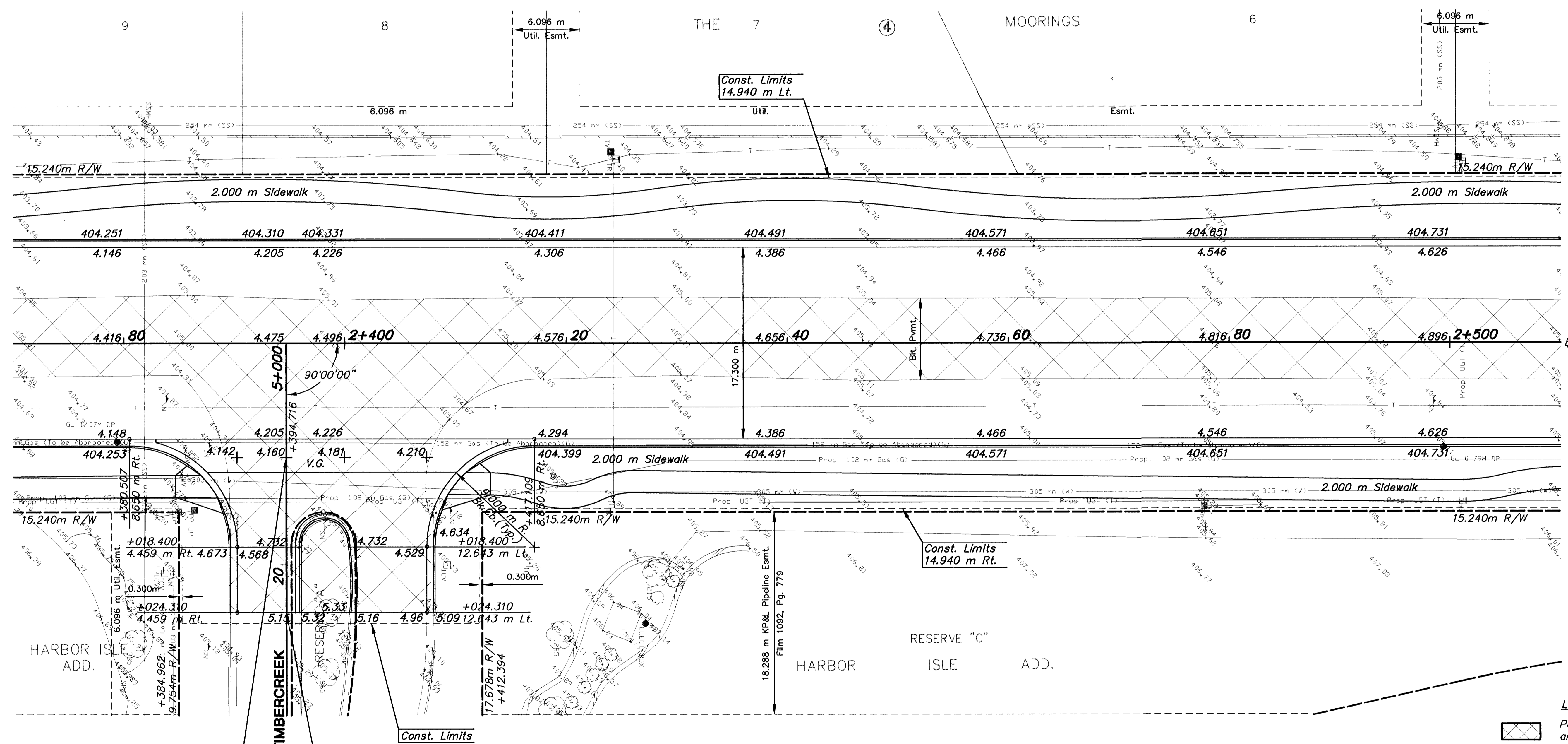


FHWA REG NO.	STATE	PROJECT NO.	YEAR	SHEET NO	TOTAL SHEETS
7	KANSAS	87N-0116-01	1999	19	110

DATE	
BY	
REFERENCES NOTED	
REFERENCES CHECKED	

Note:  
Grade Parking Left as Required  
to Drain Existing Easement.



Sta. 2+394.716, Meridian  
Const. Conc. Pavement 200 mm  
Uniform (AE)  
See Sht. No. 34

Sta. 5+024.310 Timbercreek, Saw  
Cut & Match Exist. Pav't.

ADJUST VALVE BOX					
STATION	OFFSET (m)	DESCRIPTION	EXIST. ELEV.	PROP. ELEV.	REMARKS
2+384.4	13.2 m RT.	WV	404.77	404.84	
2+385.2	11.8 m RT.	WV	404.76	404.55	

BM #5 "C" cut on top of curb @ w. end of the NW return  
Timbercreek & Timbercreek Cir. Sta. 2+406.49  
Elev.=405.047

- UTILITY OWNERS**
- CATV - Multimedia Cablevision (316)262-4270
  - G - Kansas Gas Service (316)832-3168
  - E - KGE (316)261-6944
  - SS - City of Wichita Water & Sewer Dept. (316)268-4908
  - SWS - City of Wichita Water & Sewer Dept. (316)268-4908
  - T - Southwestern Bell Telephone Co. 1-800-734-7590
  - W - City of Wichita Water & Sewer Dept. (316)268-4908

2				
1				
NO.	DATE	REVISIONS	BY	APP'D
KANSAS DEPARTMENT OF TRANSPORTATION				
<b>MERIDIAN AVE.</b>				
<b>STA. 2+370 TO STA. 2+510</b>				
PROJ. NO. 87N-0116-01		SEDGWICK COUNTY		
<b>MID-KANSAS ENGINEERING CONSULTANTS, INC.</b>				
WICHITA, KANSAS				
DESIGNED BY: GJA	CHECKED BY: GJA			
DRAWN BY: WJW	DATE: DEC. 1998	SHEET 19 OF 110		

K:\CIVIL\97043\PAV\97043\_E3.DWG Tue Jan 05 16:13:33 1999