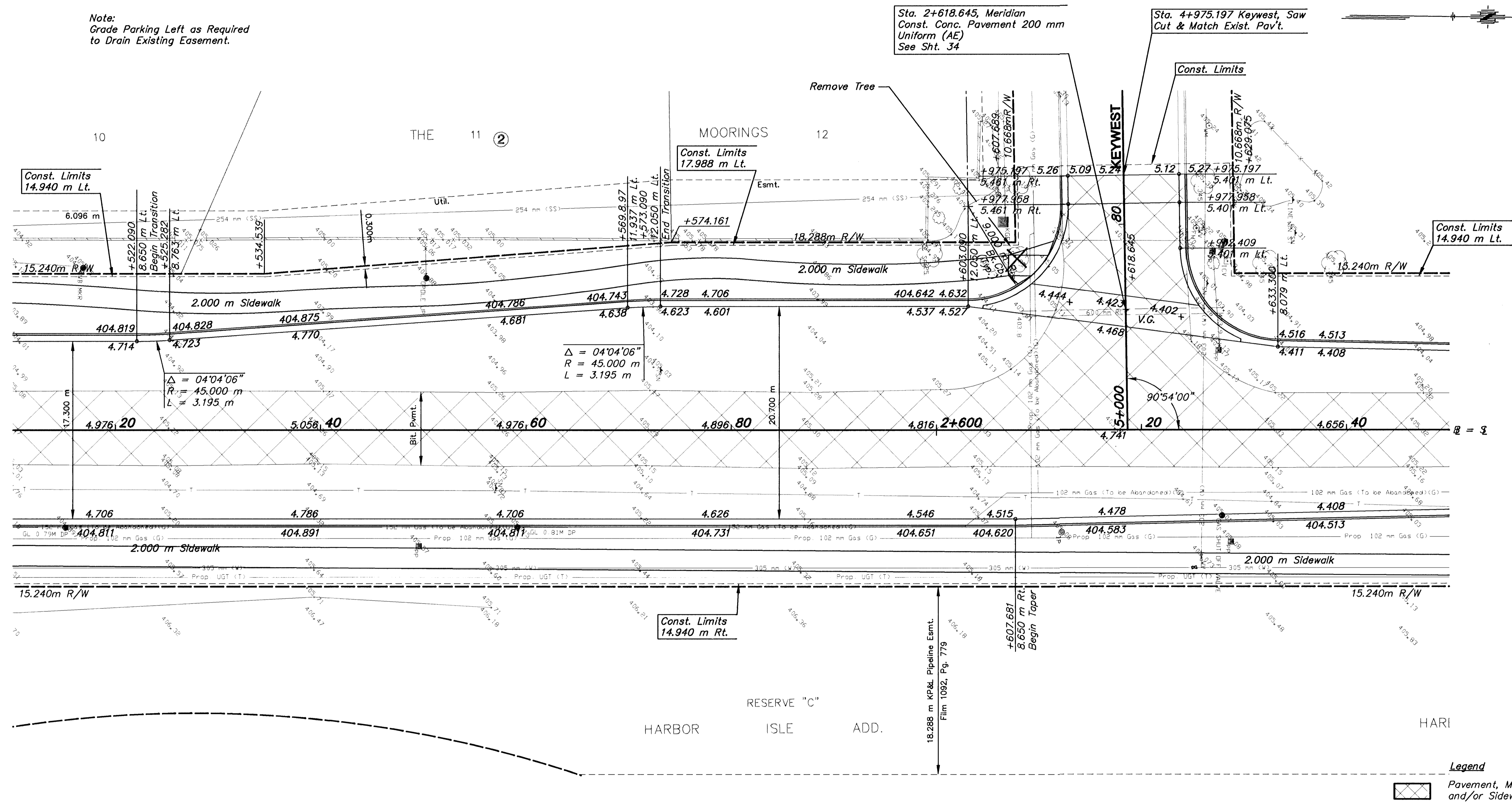


FHWA REG NO.	STATE	PROJECT NO.	YEAR	SHEET NO	TOTAL SHEETS
7	KANSAS	87N-0116-01	1999	21	110

DATE	
BY	
REFERENCES NOTED	
REFERENCES CHECKED	

Note:
Grade Parking Left as Required
to Drain Existing Easement.



ADJUST VALVE BOX & FIRE HYDRANT					
STATION	OFFSET (m)	DESCRIPTION	EXIST. ELEV.	PROP. ELEV.	REMARKS
2+625.9	19.7 LT.	FH	405.23	405.01	
2+625.9	12.4 RT.	WV	405.07	404.95	
2+626.0	19.7 LT.	WV	405.22	405.01	

BM#6 City Disk 18.31 m W & 7.07 m N of C/L
Meridian & Keywest Sta. 2+628.13
18.31 m Lt. Elev.=405.199

- UTILITY OWNERS**
- CATV - Multimedia Cablevision (316)262-4270
 - G - Kansas Gas Service (316)832-3168
 - E - KGE (316)261-6944
 - SS - City of Wichita Water & Sewer Dept. (316)268-4908
 - SWS - City of Wichita Water & Sewer Dept. (316)268-4908
 - T - Southwestern Bell Telephone Co. 1-800-734-7590
 - W - City of Wichita Water & Sewer Dept. (316)268-4908

NO.	DATE	REVISIONS	BY	APP'D
2				
1				

KANSAS DEPARTMENT OF TRANSPORTATION

MERIDIAN AVE.
STA. 2+510 TO STA. 2+650

PROJ. NO. 87N-0116-01 SEDGWICK COUNTY

MID-KANSAS ENGINEERING CONSULTANTS, INC.
WICHITA, KANSAS

DESIGNED BY: GJA	CHECKED BY: GJA
DRAWN BY: HWJ	DATE: DEC. 1998

SHEET 21 OF 110

K:\CIVIL\97043\PAV\97043E10.DWG Tue Jan 05 16:13:59 1999

C:\CIVIL\97043\PAV\97043E10.DWG