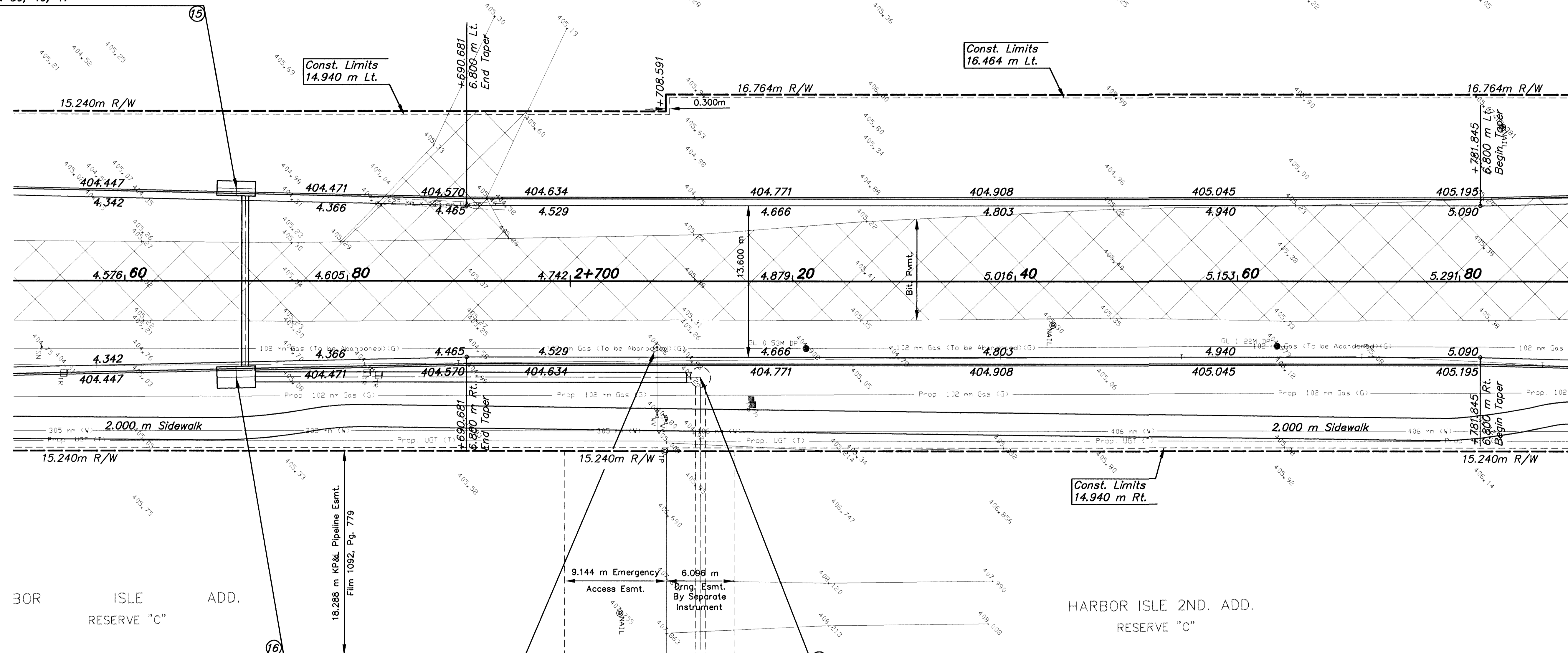


FHWA REG NO.	STATE	PROJECT NO.	YEAR	SHEET NO	TOTAL SHEETS
7	KANSAS	87N-0116-01	1999	23	110

DATE	
BY	
REFERENCES NOTED	
REFERENCES CHECKED	

Sta. 2+670.015 Meridian, Const.
 Curb Inlet (Type 1), 8.316 m Lt.
 L=3.454 m, W=1.321 m
 Inlet Top=404.414
 Install 600 mm x 15.68 m Storm Swr. (RCP)(E)
 See Sht. No. 39, 46, 47



Sta. 2+670.022 Meridian, Const.
 Curb Inlet (Type 1), 8.621 m Rt.
 L=3.454 m, W=1.930 m
 Inlet Top=404.414
 Install 900 mm x 39.25 m Storm Swr. (RCP)(N)
 See Sht. No. 39, 46, 47

Relocate Fire Hydrant to a point behind Storm Sewer. Work shall be as approved by the Engineer.

Sta. 2+711.708 Meridian, Exist.
 Manhole (Type P), 8.600 m Rt.
 1.829 m Dia.
 Manhole Top=404.736
 Connect 900 mm Storm Swr. (S) to Exist. 900 mm Stub.

ADJUST VALVE BOX & FIRE HYDRANT					
STATION	OFFSET (m)	DESCRIPTION	EXIST. ELEV.	PROP. ELEV.	REMARKS
2+707.8	5.9 m RT.	FH	404.96		RELOCATE
2+707.8	11.9 m RT.	WV	404.92	404.92	NO ADJUSTMENT
2+708.6	12.5 m RT.	WV	404.82	404.82	NO ADJUSTMENT

- UTILITY OWNERS**
- CATV - Multimedia Cablevision (316)262-4270
 - G - Kansas Gas Service (316)832-3168
 - E - KGE (316)261-6944
 - SS - City of Wichita Water & Sewer Dept. (316)268-4908
 - SWS - City of Wichita Water & Sewer Dept. (316)268-4908
 - T - Southwestern Bell Telephone Co. 1-800-734-7590
 - W - City of Wichita Water & Sewer Dept. (316)268-4908

Legend
 Pavement, Median, Driveway and/or Sidewalk Removal

2				
1				
NO.	DATE	REVISIONS	BY	APP'D
KANSAS DEPARTMENT OF TRANSPORTATION				
MERIDIAN AVE.				
STA. 2+650 TO STA. 2+790				
PROJ. NO. 87N-0116-01		SEDGWICK COUNTY		
MID-KANSAS ENGINEERING CONSULTANTS, INC.				
WICHITA, KANSAS				
DESIGNED BY: GJA	CHECKED BY: GJA			
DRAWN BY: WNJ	DATE: DEC. 1998	SHEET 23 OF 110		